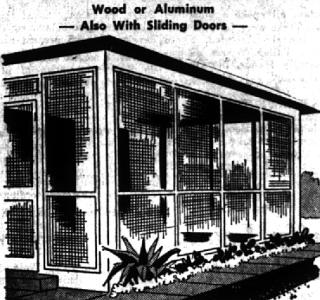


SCREENED PORCHES and PORCH ENCLOSURES

Wood or Aluminum — Also With Sliding Doors —



Visit Our Showroom — Free Estimates

WOODCRAFT COMPANY

Serving Satisfied Customers Since 1923

1184 Grant, S. of Lincoln MI 4-0424

New! The Latest Word In Lawn Spreaders!



- light weight
- automatic shut-off
- full 18" spreading width
- treats up to 5,000 sq. ft. without refilling



ONLY \$4.95

When You Buy TURF BUILDER or HALTS PLUS

GET ACQUAINTED CORNING WARE SPECIAL!



1 1/2-QT. SAUCEPAN

WITH COVER AND DETACHABLE HANDLE

ONLY \$4.88

If bought separately \$6.50 SAVE \$1.62

(Offer good April 6 - May 10, 1964 only) On May 11th price goes up to \$6.50

One saucepan does three jobs! One to freeze in — one to cook in — one to serve in — and if it most washes itself, because it's made of heatproof, coldproof, non-porous PYROCERAM® brand space-age ceramic. Detachable handle fits all CORNING WARE® saucepans, skillets, and saucemakers.



CHEMEX

Huston Hardware is your Headquarters for CHEMEX Coffee Makers and Filter Paper.

HUSTON HARDWARE COMPANY

"In The Heart of Birmingham Since 1909"

305 N. Woodward Open Fri. Eve's. MI 4-7350 Free Delivery

Dispute Tentative Okay Goes To Sidewalk Program

(Continued from 1-A)

Although not named as a defendant in the writ, Robert A. Frye, top vote-getter in the election, was not affected by it. He, too, was certified by the board of canvassers, but Stadler cannot swear him in until the ban is lifted. Two meetings of the organization — one on Monday as required by law, and the other Tuesday, the regular meeting date — were adjourned by Colombo to 7:30 p.m. next Monday.

MEANTIME, through his attorney, Stanley E. Beattie, Bereford has petitioned the county board of canvassers for a recount of the April 9 election. After the votes had been tallied, it appeared that Bereford and Webb had tied with 395 votes each for two-year terms. The board of canvassers, by a 3-1 vote, decided to add the 28 votes cast for Webb for the 1-year commission term and 1 vote for contestable, giving the state candidate a 419-395 edge over Bereford. Pierce also received the benefit of 29 disputed votes cast for him for the 2-year term and 2 for contestable which gave him the lead over John Blanchard, 421-415.

THE BOARD majority, consisting of vice chairman Robert E. Anderson, attorney James Allen Hart, said the "intention" of voters was clear in spite of improperly placed stickers.

"The majority of the people went in there with the intention of trying to vote for Webb and Pierce properly," said Anderson. He disagreed with City Attorney E. Hartman who said the board of canvassers "simply checks the addition of the returns from the two precincts."

CHAIRMAN OF the board George H. Goldstone, attorney, agreed with Hartman and said that only those stickers in the proper slots should be counted.

Goldstone signed the record of the canvassing board meeting with the following dissent:

"I do not concur in either the statement of votes cast nor in the order of certification for the reason that it is not a true and correct canvass of the returns and is contrary to law."

Anderson said he didn't think Con-Con writers and state legislators took the function of canvassing votes away from the city commission and gave it to "this board simply because of the mathematics ability of either group."

"It was done to protect the voting franchise of every voter who casts a ballot," Anderson said.

IN A STATEMENT to The Eccentric, Bereford commented: "As a long-time resident, former mayor and commissioner of the City of Bloomfield Hills, I was shocked and amazed by the arbitrary action taken by the board against the advice and counsel of its chairman, George H. Goldstone, an attorney at law, and against the advice of the city attorney, William Hartman.

"The canvassing board arbitrarily and capriciously altered the vote of the electorate. There was no basis for this alteration except arbitrary assumption."

BERESFORD SAID that "in view of the obvious disregard of the law" by the canvassing board, "I have no alternative but to petition for a recount to have this matter determined fairly and legally."

"I am doing so in the interest of all citizens, particularly those of Bloomfield Hills," he said.

"If in this case a vote can be changed from what it says on the ballot, then such change can be made in other cases and the will of the people can be voided by arbitrary and capricious action by officials who have not even seen the ballot or the voting machine."

Blanchard, the other incumbent who sought election to a 1-year term, is on vacation in Egypt with his family.

WEBB WILL be represented at the hearing Monday by the Detroit law firm of Rodman, Longley, Bo-

gotten, Armstrong and Dahling. Attorney Harris Wise of Birmingham will represent Pierce.

The county board of canvassers is scheduled to start the recount sometime next week.

Birmingham's 1964 residential sidewalk program was given tentative approval by city commissioners Monday night. City Engineer William T. Killen estimated the cost of the project at approximately \$45,000. The City's share would be about \$16,500 and the property owners, \$28,500. Seven areas of the city are included in the 1964 program, Killen said. They are:

Area No. 1—bounded by Maple, Adams, north of Buckingham and the Grand Trunk Railroad.

Area No. 2—bounded by Adams, south of Wimpleton, Hunter and northern city limits.

Area No. 3—bounded by Eton, Derby and the Grand Trunk Railroad.

Area No. 4—bounded by 14 Mile, east city limits, Lincoln, Eton, Bradford and Sheffield.

Area No. 5—bounded by 14 Mile, Pierce, north of Catalpa and Grant.

Area No. 6—bounded by Lincoln, Southfield, southern city limits and Cranberry.

Area No. 7—bounded by Adams, north of Hazel, Columbia and south of Haynes.

Stations

(Continued from 1-A)

KILLEN NOTED that the 1964 program includes all the areas of the city that have not been covered

clearly the wage-earner, be immunized against the disease.

HEADING THE steering committee for Oakland County in the anti-polio drive are Dr. Robert Bookmyer, 462 Puritan, Birmingham, and Dr. Worth W. Henderson of Royal Oak. Coordinator is Armin Both of Birmingham.

Members of the committee are Dr. Bernard Berman, acting head of the Oakland County Department of Health; Raymond Jensen, president of the Oakland County Pharmacists Association; Dr. Edgar J. Geist, Jr., of Rochester; and Dr. John Simpson of Birmingham.

Members of the committee said persons are not required to go to any one specific station to receive the vaccine.

IMMUNIZATION stations in the Birmingham area include:

BIRMINGHAM: Derby Junior High, Meadowlake Elementary, Quanton, Seaaholm High, Groves High.

BLOOMFIELD: Bloomfield Hills High, Bloomfield Hills Junior High, Booth Elementary, East Hills Junior High, Eastwood Elementary, Miracle Mile, Vaughan Elementary.

LATHRUP: Lathrup Elementary, Southfield No. 10.

SOUTHFIELD: Levey Junior High, McKinley Elementary, Northland Center. Medical Concourse near WWJ Booth.

TROY: Troy Drive-in Theatre, Troy High School.

WEST BLOOMFIELD: Pine Lake Elementary, West Bloomfield High.

Lathrup Council Changes Dates For Meetings

The Lathrup Village City Council will meet the second and fourth Monday each month, according to a resolution passed at their meeting this week.

Mayor Pro-Tem Elizabeth W. Mitchell pointed out that the rescheduling from the first and third Mondays to the second and fourth Mondays would aid in avoiding holidays, resulting in less reshuffling of meeting dates.

Their next meeting is scheduled for April 22.

gle, Armstrong and Dahling. Attorney Harris Wise of Birmingham will represent Pierce.

The county board of canvassers is scheduled to start the recount sometime next week.

WE FEEL PRETTY

- with our daisy decor — chrysanthemums garlands — bright potted plants — charming wall planters — elegant nasturtium sprays —

... come in and see why we feel so young and sassy it's springtime, you know!

McCLELLAN BALL CO.

286 S. WOODWARD, BIRMINGHAM, MICH. FREE AREA DELIVERY MI West 4-4155

Bankers to Meet

The Michigan Bankers Association will hold its Bank Operations-NABAC meeting at Boyne Mountain Lodge on April 22.

Fred Modale, vice president, National Bank of Detroit, and a Birmingham resident, will address the Michigan Bankers Association's Bank Operations-NABAC Conference on the subject "Auditor Interest in Personnel."

Modale has been active in civic, charitable and educational institutions in Detroit and Michigan. He is a past director of both the Detroit Urban League and the Detroit Cerebral Palsy Center.

Reveal Deadline To Enter in Fair

Community organizations wishing to have a concession booth at the Village Fair May 14 through 17 have until midnight April 24 to notify the Birmingham Chamber of Commerce.

The fair is being sponsored by the chamber as a kick-off to the Michigan Week-Centennial observance the next week. Present plans call for various concession booths under the operation of local churches, service

clubs and other community organizations to be set up adjacent to Shain Park.

CAMPUS TOURS TO COLLEGES

In Michigan and Ohio

Sponsored by Don Laatch and Don Grothe

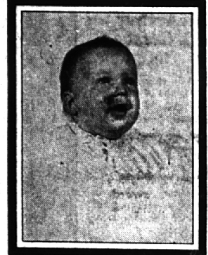
1st trip April 25th

CALL 682-2697 for details

AT KRESGE'S DOWNTOWN STORE

Let Peter Pan

Take a BIG 11" x 14" PORTRAIT of Your Child (5 wks. to 8 year) For Only 99c



Bust Vignette

Plus 50c for wrapping and handling

Let PETER PAN PORTRAITS skilled photographers capture the charm of your child! You select from 6 or more permanent photographs the lovely portrait you'll cherish forever. Limit one per child, two per family. Children's group pictures taken at 99c per child.

Apr. 16 thru 18 PHOTO HOURS
Thurs. 10-6
Fri. 10-8
Sat. 10 - 5:30

KRESGE'S

DOWNTOWN STORE ONLY — 233 W. Maple

Thurs., Fri. & Sat. Only! (April 16, 17 & 18th)

In Birmingham...

HART SCHAFFNER & MARX at Dickinson's

Walbee Bldg. — Birmingham
Pontiac: Saginaw & Lawrence
Birmingham Store
Open Fri. Evenings 'til 9

BEEF

STOCK YOUR FREEZER NOW WHILE BEEF PRICES ARE LOW!

39

lb.

C FRONT OF BEEF

This Cut Consists Of:

- POT ROASTS
- RIB ROASTS
- GROUND BEEF
- STEWING & BRAISING CUTS

59

lb.

C HIND OF BEEF

This Cut Consists Of:

- ALL STEAK CUTS
- SWISS STEAK
- ROLLED ROASTS
- GROUND BEEF

49

lb.

SIDE OF BEEF

CUT AND WRAPPED!

Cut to your specifications and then Freezer-Wrapped at no extra charge!

Wesley's Quaker Maid, 18 Flavors

ICE CREAM 1/2 Gal. 79c

Bocchuti, 8c Off Label

COFFEE 2-lb. Can \$1.39

Hunt's No. 2 1/2 Can

PEACH HALVES 2 Cans 55c

Cleans Copper, Vite, Brans

BAR KEEPER'S FRIEND, 1-lb. Can 45c

Goshie White Meat

TUNA FISH 3-7-oz Cans \$1

Freshpak

WAX PAPER 2 Rolls 43c

Prices Effective Thurs., Fri., Sat. April 16, 17, 18.

Dairy Specials

Vlasic Tilden BUTTER
69c lb.

Borden's **SKIM MILK** 1/2 Gal. 29c

Mickelberry **SLICED BACON** 49c lb.

Shedd's Saltlover **MARGARINE** 39c lb.

Coffee-Mate

For Your Coffee! Instant!

6-oz. Jar **45c** 11-oz. Jar **75c**