

### Antique Jewelry Being Exhibited At B'field Plaza

A display of antique jewelry by Heirlooms Unlimited of West Hempstead, L. I., will be featured Friday at Julliard's Shoes in Bloomfield Plaza, Telegraph at Maple.

Georgian, Victorian and early 20th century jewelry is included in the collection.

BETTY AND JACK Cohen are owners of Heirlooms Unlimited. Mrs. Cohen is the sister of Mrs. Julian Levine, who with her husband owns Julliard's.

Mrs. Cohen was an American student in France 30 years ago when she became interested in antique jewelry, first buying it for herself and later going into business with her husband.



### Our Shepherd To Show Art By Students

The hallways of the education building at Our Shepherd in Birmingham will turn into an art museum for a week from April 10-17.

The school is located on 14 Mile Road, four blocks east of Woodward. Every piece of art on display has been created or constructed by the children of Our Shepherd Lutheran School.

More than 400 works, all of them the best of various art projects of the current school year, will make up the display. Compositions, original stories and poems, and science exhibits are also a part of this annual spring exhibit.

DRINKING STRAWS, crayon stubs, eggs, toothpicks, worn-out sponges, patching plaster, cardboard, thread, foil, torn magazines, newspapers and charcoal are but a few of the media employed in these varied productions.

The exhibit will be open to the public throughout the week. Teachers especially are invited to the Open House from 4 to 8 p.m. Sunday.



### They're Modern-Day Minstrels

The Greenbriar Minstrels began as the formal name for a group of three young adults almost 16 months ago. Al Pendorf (left) and Ron Lindblom appeared together in various nightspots. Then, they met Annele, and one week later the Greenbriar Minstrels came into reality. The group began singing in small nightclubs in and around Grand Rapids. Since that time they have appeared throughout the country. They are performing through Sunday at The Raven Gallery, 136 Brownell, Birmingham. Opening Tuesday at The Raven is Tom Pasle, with ballads and blues.

Until spectacles were introduced in 1800 A.D., millions of nearsighted people lived out their lives unable to see mountains, clouds or stars. The inventor of spectacles is unknown but Benjamin Franklin invented bi-focals.

### B'ham Bus Driver Plays in 'Carousel'

Don Hilliard of Keego Harbor, who drives a bus for Great Lakes Transit, 391 S. Woodward, Birmingham, will play Mr. Snow in "Carousel" presented by the Berkeley Area PTA Council.

Performances will be given at 8 p.m. April 10-11 and 17-18 in Sorup Junior High School, Oak Park.

Birmingham residents in the cast include Mrs. George Cowie, 5208 Cold Spring Lane, and Peggy Boyles, 369 Kennesaw.



THAYER SOULE

### Series

(Continued from 1-D)

the Daum glass factory; Lorraine and its wrought iron work; and The Riviera, Cannes, Bikini Beach and Juan-les-Pins and Monaco.

COQ AU VIN (chicken in wine) is featured on the film-correlated dinner, served from 6-7 p.m. preceding each film showing. Other French foods will complete the menu.

Reservations are requested for the dinner by Thursday, April 16. No reservations are necessary for the movie, but tickets are on sale now at The Community House, Bates and Townsend, Birmingham.

Getting ready to sell your car? Advertise it in the Classified Ads.

### Professor Previews Met Opera Season At Franklin Forum

Jason H. Tiekton, associate professor of music at Wayne State University, will give "A Preview of the 1964 Metropolitan Opera Season in Detroit" at the Franklin Forum Series Tuesday.

He will speak at 1:30 p.m. at the Franklin Community Church. The program is open to the public, and there is an admission charge.

Prof. Tiekton is a lecturer for the Detroit Symphony Orchestra and the Wayne State University radio course "Introduction to Music Literature."

Try an Eccentric Want Ad!

### PERSONAL LOAN

Dear Reader:

Would you like to quickly borrow up to \$5,000 Cash and have up to 60 long months to repay? . . . To consolidate all your debts into one convenient account and have only one place to pay each month? . . . To pay your taxes, finance company, merchants or for home improvements!

We will loan you money on personal loan, automobiles, furniture or home equity.

Come in to our office or phone us NOW. We will gladly give you full information and will be pleased to serve you.

**LEONARD HOME MORTGAGE INC.**  
240 WASHINGTON SQUARE BUILDING  
ROYAL OAK, MICHIGAN  
PHONE 543-6554

April  
24th  
25th  
26th

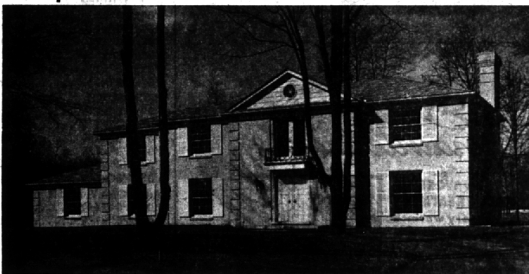
Quality—All That The Name Implies

**Sterling's GARDEN CENTER**

1906 N. Woodward Royal Oak  
Across From The Shrine Just North Of 12 Mile  
LI 7-3111

### Exquisite

### 5 Bedrooms



1253 COVINGTON ROAD, BLOOMFIELD VILLAGE

**PERCY M. NELSON, INC.**

MI 4-0335

## Colonial or Contemporary

you'll find charm... comfort... grace... livability... in



**THE WARWICK**  
Featuring 4 big bedrooms, 2 1/2 baths, 21-ft. living room, paneled family room, dining room, separate breakfast room with DorWAL, full basement, 2 1/2 car garage.



9 Striking Models  
From \$24,400-\$39,000

Ranches, Colonials, Split-levels... artistically furnished by **ROBINSON FURNITURE CO.**



**PHB PRACTICAL HOME BUILDERS, INC.**  
Sales by Greater Bloomfield Real Estate Co.

6435 TELEGRAPH RD  
Bloomfield Twp. JO 4-6200

GASLIGHT TOWN GASLIGHT TOWN GASLIGHT TOWN

## GRAND OPENING

### Gaslight Town

located in the BIRMINGHAM SCHOOL DISTRICT

**The PATHFINDER**  
PRICE \$26,900 inc. tax

**Large 4 BEDROOM 2 1/2-Bath COLONIAL**

OTHER 3 and 4 BEDROOM MODELS TO CHOOSE FROM— ALL HAVE GAS HEAT, SEWERS, CITY WATER, FIREPLACE, 2-CAR ATTACHED GARAGE, BASEMENT.

Wife Saver Kitchen with R.C.A. Built-Ins • Large Family Room with Fireplace, Paneled Walls • Book Case and Ranch Oak Flooring • Slate Vestibule • 2-car Brick Garage

Ask About Our Trade-in Program

Model: MI 7-1544

**BENEICKE and KRUE BUILDERS • DI 2-5220**  
Models Open Daily 1 to 8 p.m.

GASLIGHT TOWN GASLIGHT TOWN GASLIGHT TOWN

**COOKING BY INSPIRATION OR BY THE BOOK... Smart Women Use Gas to Cook!**

All the new gas ranges offer amazing automatic timing devices... remarkable new low temperature oven control... automatic meat thermometer... speedy top burners with click-set controls that hold heat where you want it... plus other features that help make every woman a gourmet cook. There are many attractive styles to choose from... take time to shop for the one that fits your cooking needs.

This Gold Star symbol of excellence marks today's Best Gas Range.

**SEE THE NEW GAS RANGES AND WATER HEATERS at your Gas Appliance Dealers!**

### GET THE FACTS You Save WHEN YOU BUY, INSTALL AND OPERATE A GAS Water Heater!

Smokeless Gas boiling seals in flame liked flavors for mouth-watering treat.

Click controls allow you to set oven to turn on and off automatically.

Built-in, motorized, removable Rotaspella frees ovens for other baking or broiling.

Burner with a-brain ratings and timers time for automatic cooking perfection.

Automatic Meat Thermometer shuts off oven when meat reaches exact degree of doneness.