

# Patio Drama Achieved by Raised Area

By ALICE BURLINGAME  
Special Writer

It seems as though everybody has patios.

In the picture we see an interesting illustration of a raised planting bed to give drama to this setting which could be very ordinary without style accents. Notice how the bricks are placed in the sand to form the paved pathway.

The rhythm of the curves of the planting bed adjacent to the raised planting bed is a part of the total charm. It won't be long until you and I can capture some good lounging in the sun.

Right now have your chairs ready to move into your sun pocket at this date.

This is the time to go to your favorite nursery and tag the trees and shrubs you wish planted at a later date. We will discover a great deal of damage due to the lack of snow and rain.

## DOWN TO EARTH

FOR THOSE WHO prefer a green garden, try the new nicotiana called lime sherbert, with lime green flowers on a plant which will grow 18 inches high.

Another startling new horticultural entity is the marigold fish face. It will make a dense mound 8 inches high. It is an annual and likes sun or partial shade. The flowers at the end of the season are small and white, hidden in the pretty green leaves.

There is a new salvia to use this year called evening glow. It has a rich old rose coloring with coral tongues. It will grow 18 inches high.

In the past your columnist has been successful growing the scarlet-colored variety in shade. I am

interested in having a small bed of mint in your garden. Due to the spreading habit of this herb, plan on planting your mint in the top of a tile which has been sunk in the ground. This is certainly a word to the wise.

You will enjoy using this herb to flavor tossed salads, peas and applesauce, as well as the usual lamb dishes.

The British are introducing battery-operated mowers which are silent-running, let's repeat it, silent-running, with anti-shock safety factors. Competition in the world market is good.

THESE DAYS I have been burning odds and ends of candles in the greenhouse to provide carbon dioxide which is supposed to give a noticeable plus effect in the growth of plants under glass.

Our friend, Roger Emmert, of Berwyn Road uses charcoal smol-



GOT PATIOTIS? INDULGE IT BY CREATING UNUSUAL PLANTING BED

agine the old rose color would also have the same growing habit.

AMONG THE All-American selections is the red globular cockscomb. The flowers will be around 6 inches across and have a vivid cardinal color. The choice of this annual will delight our many flower arrangers.



Mrs. Burlingame

dering in a large metal can. This was an idea Boss Kettering explored.

Do you believe everything you read in the paper? The other day Heloise wrote that if you wanted to control the view into a window you could make a mixture of epsom salts and beer, apply it to the surface and be assured of results.

Having applied said mixture to the inside glass of the greenhouse by the use of a paintbrush tied to a stick, I awaited results (the west sun was beginning to burn the leaves).

You guessed it, the surface coating smeared with the humidity and double trouble awaits the mop-up squad.

## Sessions Set On Gardening

"More Beautiful Home Grounds" is the theme for two meetings presented by the Oakland County Cooperative Extension Service of Michigan State University.

Lyle Abel, director of the Oakland County Extension Service will discuss shrubs and trees at 7:30 p.m. today in the 4th floor auditorium of the old Oakland County office building, Pontiac. Slides of desirable shade trees for various locations will be shown.

AT THE SAME TIME and place April 9, Eugene D. Johannsmier, aeronomist and sales manager of Hiram Godwin and Son, Inc., of Detroit, will discuss the fine points of building and maintaining a good lawn. A well-known authority on lawns, he has served as president of the Michigan Turf foundation.

Jay Poffenberger, county extension agent in agriculture, will present information on soils and control of undesirable grass and weeds.

Interested home owners are welcome to these free meetings.

Halley's Comet, which was last seen in 1910, has a history of recorded appearances going back as far as 240 B.C. It will return again in 1986.

For long-lasting wear of fine kitchen knives, wash, rinse, and dry them immediately after use. Never soak knives as this will dull the cutting edges.

## For Life of the Knife

These fabrics shed soil quickly and thus do not need hard scrubbing, rubbing or twisting that sets wrinkles into such materials.

The manufacturer's label usually specifies whether curtains require handwashing or may be put into the washing machine.

## Synthetic Fibers Make Washing Easy

Curtains made of synthetic fiber fabrics, blends and those treated with the latest in durable finishes are easy to wash and dry.

These fabrics shed soil quickly and thus do not need hard scrubbing, rubbing or twisting that sets wrinkles into such materials.

The manufacturer's label usually specifies whether curtains require handwashing or may be put into the washing machine.

# Family Loves Orient-Touched Decor

By ETHEL SIMMONS  
Arts Editor

Raising three children and Great Dane show dogs in a home where such things as fragile antique Ming vases are part of the decor is no problem, according to Mrs. Valerie Hilsen, 4860 Burnley Drive, Bloomfield Township.

She says, "The children have been brought up with these objects. They're very careful and know they aren't supposed to touch."

And Rori of Noblesbrook, champion Great Dane, bounds through the living room greeting guests while moving carefully around the prized furniture and accessories.

Mrs. Hilsen, a free-lance decorator, doesn't like to stick to any one period in her room schemes. "It gets very monotonous," she says.

COLOR ALSO IS a major point of emphasis with Mrs. Hilsen. In the family's den she used gold, Ming greens, corals, beiges, blues and aqua.

"Some people are afraid to play with color," she reports. "We try whenever we move to get the children's ideas on color. Anything drab, I don't do."

Her husband Rudi is president of Noblesbrook Contractors, Inc. in Detroit. "He is very vivid, dynamic, with strong likes and dislikes. He feels very good in this room (the den) and loves to entertain here."

The children are Arden, 12; Gary, 9; and Dana, 5.

IN THE LIVING room, a Louis XIV sofa ("a collector's or museum piece") redone in white hammered satin is accented by a Ming vase on a nearby table.

Off-whites, pale pinks, gold and natural teakwood are used in the living room; the carpet is Ming green. "I pulled all the colors out of the Ming vase," says Mrs. Hilsen.

This same trick, of building a room around a favorite accessory, is seen in the dining area, where a table was made up to go with an Oriental wall panel.

Mrs. Hilsen inherited her love of antiques from her grandmother. "She collected for 70 years, particularly Chinese and Oriental."

MRS. HILSEN'S professional decorating work is mostly in the commercial and industrial field and

April 2, 1964 THE BIRMINGHAM (MICH.) ECCENTRIC 5-D

especially for builders' model homes.

"I create the house from the blueprints," she says, "the brick, tiles, parquet floors, lighting fixtures, formicas, wallpapers, murals on the walls, everything to make the home salable."

## Sap Runs—It's Time to Make Syrup

"Sap's runnin'" and maple syrup is being made in Michigan.

Maple syrup is concentrated sweetener. Whether collected in covered buckets or through plastic tubes running into plastic bags, it takes 40 gallons of sap to make one gallon of maple syrup.

The price of the syrup must cover the cost of labor for tapping trees, hauling sap and boiling it down to syrup. The price you pay must also include the cost of equipment, fuel, and packaging.

Pure maple syrup must be just that—100 per cent maple syrup. Maple-flavored blends may contain as little as 12 per cent pure maple syrup combined with other products, such as cane or corn syrup. The label lists the ingredients in order of amount present in the container.

FANCY GRADE MAPLE syrup is clear, light amber in color and has a mild flavor. Demand for fancy grade is often greater than the supply, so buy in the spring when the supply is most likely to be available.

Grade 1 maple syrup is somewhat darker in color and may be cloudier than fancy grade. Grade 2 maple syrup is used chiefly in making maple-flavored products.

Maple syrup in sealed containers keeps well at room temperature. Store opened containers in the refrigerator. Syrup purchased in gallons is more economical to buy than quarts and half gallons, but it is wise to remove it from the can, heat it to the boiling point and seal it in smaller sterilized glass jars.

If maple syrup should mold slightly, restore it to normal flavor by removing the mold, heating the syrup to the boiling point and then skimming it again.

The first homemaker to ply his trade in America was a Thomas Baird, or Beard, who opened up shop in the town of Salem in 1629.

He was engaged by the Massachusetts Bay Company to make shoes for the colonists.

ing. In contrast is a kitchen-laundry unit of the 1870's, when the Industrial Revolution resulted in the introduction of innumerable mechanical appliances designed to create a new efficiency in homemaking.

IN ADDITION, an opportunity to view the latest advances on the homefront is afforded by the full-scale room exhibits being presented by the Detroit Edison Co. and the Michigan Consolidated Gas Co.



FIVE-YEAR-OLD Dana Nilsen reads a book, using a Chinese antique chair, which has mother-of-pearl inlay with marble, as a bookstand. The chair is estimated to be between 300-400 years old.



## See Kitchen Contrasts

A new exhibit depicting changes in the domestic scene from the mid-18th century through today's most advanced developments, "Kitchens—Then and Now," opened Tuesday at the Detroit Historical Museum, and continues through August 16.

Among the highlights are a French dwelling representative of Detroit homes about 1750, equipped with the sparse domestic implements with which the homemaker of that day coped with cooking, laundering and general housekeep-

ing. In contrast is a kitchen-laundry unit of the 1870's, when the Industrial Revolution resulted in the introduction of innumerable mechanical appliances designed to create a new efficiency in homemaking.

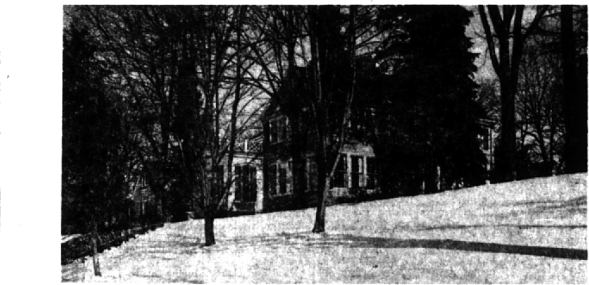
IN ADDITION, an opportunity to view the latest advances on the homefront is afforded by the full-scale room exhibits being presented by the Detroit Edison Co. and the Michigan Consolidated Gas Co.



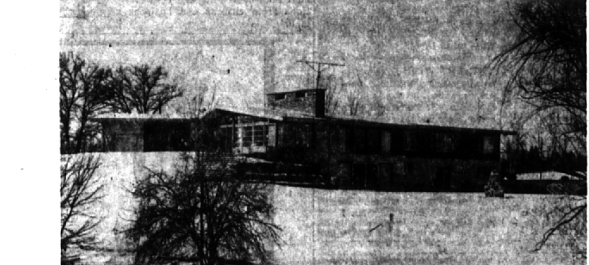
TRULY OUTSTANDING. Quality workmanship and the finest of materials makes this BLOOMFIELD VILLAGE home one of the finest! Beautiful oak-paneled entrance hall and stairway. 3 bedrooms that are really big (1st floor master suite) and 2 1/2 baths. Dining room. Paneled recreation room and porch. To mention a few of the extras: Trion air-filter. Lawn sprinkling system. Completely AIR-CONDITIONED. You'll be HAPPY if you BUY IT!



LOW price, LOW taxes and LOW heat cost. Spottless three bedroom with extra room upstairs for study. Near Pierce School and stores. \$12,850.



AN INVITATION TO LIVE GRACIOUSLY on two acres in Bloomfield Hills. Six bedrooms plus quarters over four-car garage. Great family room plus sun room, library and dining room. Large butler's pantry. Heated greenhouse. Walk to Cranbrook. Many new extras for YOU TO SEE.



LIVE AND HAVE FUN ON WHAY LAKE in Bloomfield Hills. Five bedrooms (one is paneled and could be a library), four bathrooms and a lav. Separate dining room, 30 foot family room plus recreation room with beautiful paneling and refreshment bar. Huge kitchen with built-ins. Automatic lawn sprinkling system. SWIMMING POOL. REALLY TERRIFIC!



NEW kitchen, NEW garage, NEW cyclone fence, NEW aluminum siding. Just decorated inside—everything in "flip-top" shape. Large living room and three bedrooms (one down). Convenient to schools and stores. VACANT \$17,500.



THE PRICE? — Only \$17,200. Three bedrooms, dining el and 14 foot enclosed porch. On 80 foot lot. Fenced yard with nice garden. New carpeting in two of the bedrooms, living room and dining el.

**Weir, Manuel & Snyder, Inc.**

298 South Woodward Birmingham 644-6300  
Birmingham, Michigan Realtors Phones: From Detroit 566-2323