

Now Planting Large Shade Trees

- Nursery Grown Sugar Maples
- Red Maple Clumps
- Moraine Locust
- Pin Oak
- Birch
- Norway Maple

SEE US FOR ALL YOUR
LANDSCAPE NEEDS
• Lawns • Plantings • Patios • Walls

Troy Tree & Landscaping Co.

4210 Rochester Road, Troy
MU. 9-2510

Right For Easter ...



HATS by
STETSON

from \$11.95 to \$20, at

Dickinson's

Wabeek Building Birmingham Saginaw at Lawrence Pontiac
Birmingham Store open Friday Evenings until 9 p.m.

NATURE NOW

Encased Seed Plants on Land, Sea

Man's dependence upon the encased seed plants must be written large.

Their 9,000 genera include about 160,000 species of present day flowering plants. These show an intriguing variety in size, shape and growth habits. They appear on the land surfaces of our world wherever suitable conditions permit.

Many have also invaded fresh water habitats and a few have adapted the sea.

Man's greatest dependence on the land-growing flowering plants centers around his ever-present need for food. This they offer in amazing variety and plenty.

Our most important meat-producing animals are also nourished by these highly developed plants

so that the meat and dairy products which they furnish are only a few steps removed from the same food source.

AMONG THE encased seed plants, the grasses which include such cereals as corn, wheat, rye, rice and oats are our most important food group. They are the basis of such staple products as bread-stuffs, pastries and processed cereals which feed the Western world and rice which feeds the East.

Corn, in addition to its starch and sugar content, also furnishes large stores of oil.

Perhaps the leguminous plants would come next in importance since they are a rich source of vegetable protein. Here we find many species of beans and peas.

Soy beans and peanuts are among the most versatile of this group since these seem to be on end to the ever-increasing list of products which scientists have discovered can be made from them to be used by both man and beast.

OUR DELICIOUS fruits, which are also produced by the seed-

bearing plants, provide us with a wide selection of sugar, starch and minerals necessary for good nutrition.

We must not forget that the edible nuts are also important and a valuable "seed fruit." They add variety to our meals and are a rich source of minerals, oils and protein. Many garden vegetables such as tomatoes, squash, melons and cucumbers are included in the term "fruit" since they, like apples and oranges, represent the protective tissues which surround the seeds, or in which the seeds are imbedded. In other words, the ripened seeds and their adjacent or surrounding tissues are all correctly called fruits.

SEEDS ARE also the source of some of our most important beverages including cocoa (chocolate) and coffee. Seeds used as spices include anise, mustard, caraway, pepper, allspice and nutmeg. Cloves are dried flower buds.

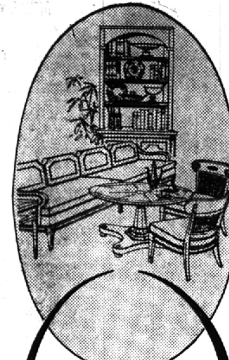
The leaves, flowers, bark and roots of many species of encased seed plants are also used as foods, spices and medicines. Here belong such species as lettuce, cauliflower,

By LYDIA KING FREHSE

Special Writer

that this product is heralded as a cure-all for the arterial stoppage which may be caused by our over-indulgence in today's rich food supply?

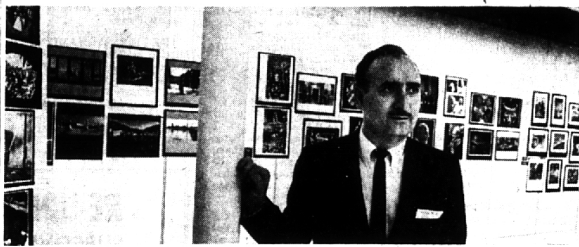
As we approach another Easter season, it is fitting that we should once more focus our attention on the magic and importance of the seed. Age-old prophetic words are these: "Behold a sower went forth to sow."



Consult Our Interior Decorators

We believe ours is a refreshing and knowledgeable approach to decorating... down-to-earth in price, too. Call for an appointment - one corner, a room or the entire house. 22-28318.

Stewart Glenn
1680 S. Telegraph Road
just south of Orchard Lake Rd.
Open Thurs, Fri, Mon. Evenings 'til 9



Photographer at His Exhibition

Newspaper photographer Tony Spina of the Birmingham Art Center, 1516 S. Cranbrook, strikes a pose at "Photography in the Fine Arts." Hours are 2-5 p.m. Tuesdays through Sundays. The BAA is located at the Birmingham Art Center, 1516 S. Cranbrook. Hours are 2-5 p.m. Tuesdays through Sundays.

B-D THE BIRMINGHAM (MICH.) ECCENTRIC March 26, 1964

Maskill Hardware Tells You About

The Underground Story of Grass ...

20% OFF Good News For Crabgrass Haters!

Halts Prevent crabgrass now at this low, low price! Reg. \$9.95 **\$7.95**

It's New! Trionized Turf Builder

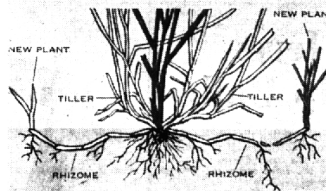
Now Turf Builder is a Trionized! For 5,000 Sq. Ft. **\$4.95**

For Good Lawn! Wear

FAMILY Thives with moderate care in sun or shade... makes a lush green lawn. **\$5.95**

For A Rich Green Lawn!

CLASSIC Thives best in sun or light shade... requires more time to get started. **\$5.95**



What Are Rhizomes?
White root-like underground stems by which grass plants spread out to occupy available growth area, transforming a collection of individual plants into more closely knit turf.

When Does Rhizoming Occur?
Spring is rhizome time for grasses. Almost all the knitting together of plants must occur before hot weather. This is why spring fertilizing is so important. Hungry grass just can't make many rhizomes. Nor can plants be fed the wrong things.

How Do You Promote Rhizoming?
Make a spring application of controlled release fertilizer. Its controlled-release characteristics make sure proper nutrients are available as they are needed in the rhizome-building process.

COMBINATION OFFER!

SAVE ON A SCOTTS SPREADER!

SAVE \$8.00
\$8.00 off with the purchase of any of the above Scotts products and the No. 75 Scotts Spreader.

SAVE \$5.00
\$5.00 off with the purchase of any of the above Scotts products and the No. 35 Scotts Spreader.

Ortho Dormant Spray \$1.98 Quart

NOW SAVE 10%

WHEN YOU BUY A 10 BAG ORDER OF ANY SINGLE SCOTTS PRODUCT OR A COMBINATION OF ANY 10 SEPARATE SCOTTS PRODUCTS. BUY NOW AND SAVE!

PANEL YOUR WALLS FOR BEAUTY

...Easy maintenance.

THE FAVORED WALL TREATMENT
The cheery warmth and beauty of wood paneling plus its easy maintenance makes it a popular wall treatment.

CHOOSE FROM LEADING NAMES IN PANELING, SUCH AS WELWOOD AND BRUCE. PANELING TO FILL ANYONE'S NEEDS AND BUDGET.

4x8' RUSTIC WALNUT	\$14.25
4x8' RUSTIC CHERRY	13.45
4x8' BATAAN	7.25
4x8' SANDALWOOD	6.90
4x8' DRIFTWOOD	7.25
4x8' ANTIQUE BIRCH	11.95

BLONDE LAUAN Light in Color V-Edge—V-Groove	PLANK STYLE PRE-FINISHED LAUAN V-Groove, V-Edge 3/16", 4 x 7'
3/16", 4 x 7' \$4.55	3/16", 4 x 7' \$3.88
3/16", 4 x 8' \$5.45	
ANTIQUÉ LAUAN V-Edge—V-Groove	NATURAL PRE-FINISHED LAUAN V-Groove, V-Edge
3/16", 4 x 8' \$5.45	3/16", 4 x 7' \$3.70
	1/4", 4 x 8' \$5.10
KNOTTY PINE PANELING 6", 8", 10" Random Width & Length	WALNUT VIROLA V-Groove, V-Edge Pre-Finished Paneling with Walnut color.
17 1/2" Sq. Ft. \$17.00	1/4", 4 x 8' \$8.95

BASEMENT COMBINATION SASH

33 x 15, Wood \$2.79
32 x 14, Alum. \$2.59

PRE-HUNG ALUM. COMB. DOORS
Complete W. Hardware
30 x 80, 32 x 80
36 x 80

\$26.95

ASPHALT SHINGLES
235 Lb. Weight
Your choice of colors.

3 Bldg. Covers
100 Sq. Ft. **\$2.49** Bdl.

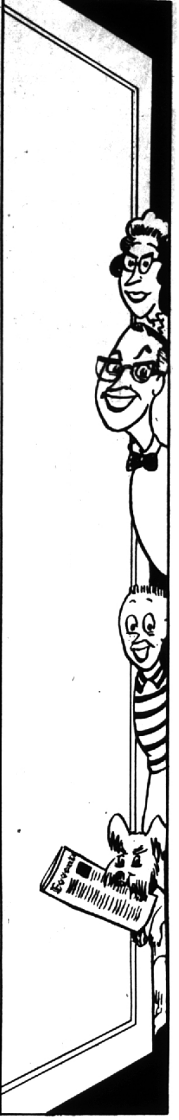
PEG BOARD
1/2", 4 x 8'

Standard \$2.29
Tempered \$2.99

BI-FOLDING DOORS
Complete with Hardware

W. P. LOUVER	17.35
20"x68"x1 1/2"	18.75
26"x68"x1 1/2"	19.95
40"x68"x1 1/2"	33.25
50"x68"x1 1/2"	35.95
60"x68"x1 1/2"	37.50
BIRCH FLUSH	
20"x68"x1 1/2"	13.55
26"x68"x1 1/2"	14.75
30"x68"x1 1/2"	16.45
40"x68"x1 1/2"	23.95
50"x68"x1 1/2"	27.50
60"x68"x1 1/2"	30.35
MANGANY FLUSH	
20"x68"x1 1/2"	11.70
26"x68"x1 1/2"	13.25
30"x68"x1 1/2"	14.65
40"x68"x1 1/2"	21.65
50"x68"x1 1/2"	23.35
60"x68"x1 1/2"	25.95

All Sale Items are cash & carry.



You Are Opening The Door To Birmingham's Greatest Classified Section

If you are a discriminating shopper you'll find it pays to read the classified pages of The Birmingham Eccentric ... today and every week.

Only in the Want Ads can you find a complete selection of every type merchandise at your fingertips. Values in homes, cars, real estate, home furnishings, pets and sporting goods.

Read and use the classified pages. To place an ad simply Dial MI 4-1100.

Take advantage of the proven record of Eccentric Want-Ads.

P.S. Ask about our low 3-time insertion rate with cancellation privileges.

MIDWEST 4-1100
The Birmingham Eccentric Classified Ads

CHARGE IT! MASKILL HARDWARE

Open Daily Until 8 P.M. — Saturday Until 6 P.M. — Sunday 10 A.M. until 2 P.M.

4400 NORTH WOODWARD ROYAL OAK, MICHIGAN LI 9-3333

Maskill Hardware

525 S. ETON, BIRMINGHAM MI 4-5300

OPEN DAILY 7:00-8:30 Friday 7:30-8:30 Saturday 7:30-8:00 Saturday