

# BRIDGE



## in BIRMINGHAM

By **BUD MAYBAUM**  
Southern Michigan Bridge Assn.  
Today I am going to present  
hand played in the third round of  
the Vanderbilt Cup Championship,  
as played in the 1964 Spring Na-  
tional Tournament.

This was a team match, and al-  
though both declarers played this  
hand perfectly, neither team won  
the board.

My reason for selecting this hand  
is the fact that it is a good example  
of the Vienna Coup, and that is  
always interesting reading.

**NORTH**  
♠ Q J 3  
♥ A Q 10 5  
♦ A K  
♣ A K 5 3

**WEST**      **EAST**  
♠ 4 2      ♠ 10 9 7 6 5  
♥ 8 5 4      ♥ J 8 7 3  
♦ 10 9 7 6 3      ♦ 2  
♣ 5 4 2      ♣ Q 10 8

**(BERNIE BERGOVOY) SOUTH**  
**(IVAN ERDOS)**  
♠ A K 8  
♥ K 2  
♦ Q J 8 5 4  
♣ 9 7

Both the Becker team and the  
Gamer team arrived at a seven no  
trump contract and a club was led  
by West. Declarer won the first

trick with the king of clubs and led  
the ace and king of diamonds, and  
when East showed out of diamonds  
on the second lead of that suit, the  
Vienna Coup was in order.

**TO COMPLETE** the coup, de-  
clarer played the ace of clubs and  
then took out three rounds of  
spades and one round of hearts,  
winning that trick with the king in  
declarer's hand, and now took off  
the queen of diamonds.

This left the declarer with the  
jack of clubs, the jack and eight of  
diamonds and the deuce of hearts.  
The dummy held the ace, queen and  
ten of hearts and the five of clubs,  
whereas East now held the queen  
of clubs and three hearts to the  
jack.

Declarer now played the jack of  
diamonds, and East is completely  
squeezed, to complete the Vienna  
Coup and make this contract. Both  
teams employed the same play and  
the board was split.

**THE COMMUNITY** House, Bir-  
mingham, will hold a special master  
point bridge tournament Monday,  
April 20 for their building fund.

This will be our way of showing  
our appreciation for the facilities  
they provide, by attending this  
game.

### Page THE BHAM ECCENTRIC 2-D March 26, 1964

The results of the game will be  
reported in this column. I cannot  
urge you strongly enough to at-  
tend. Hope to see you there.

For an additional contribution to  
this fund, I will attempt to get you  
a life master of your choice for a  
partner in this game.

Recent winners in Birmingham  
tournaments include the following  
from The Community House: Mr.  
and Mrs. Ken Cook, Lullie Brunk  
and Eleanor Petritz, Lynn West-  
hoven and Sue Hodary, Mr. and  
Mrs. Dave Buskirk, Mr. and Mrs.  
Herb Beyer, W. A. Wagner and  
Colin Campbell and Mr. and Mrs.  
Bud Maybaum.

**RECENT WINNERS** of the Bir-  
mingham YMCA include Greta  
Shepherd and Donna Zagrodsky,  
Ira Benjamin and Jerry Benjamin,  
Jim Fenwick and Frank Lacy,  
Walter Lachner and Tom Baiton,  
Ed Clarke and Bud Maybaum,  
Fuekie Stinson and Peg Moran, Dr.  
and Mrs. Gerry Walker.

Adela Todd and Lillian Conrath,  
Dotie and Bud Dreifuss, Barbara  
and Marty Madrin, Nancy Levan  
and M. A. Collins, Lullie Brunk and  
Jennie Edwards, Fred Canaday and  
Frank Allen, Anna and Pete Po-  
linsky, Hilda Murphy and Gloria  
Ravitt.

John Moresen and Hank Georgia,  
Marie De Prese and Dorothy Lacy,  
Hugh Stevenson and J. A. Mc-  
Donald, Jane Ford and Hilda Mur-  
phy, and Lullie Brunk and Sandy  
Stevenson.

**BRIDGE EVENTS** that may be  
of interest to you would be the  
Canadian National Tournament,

## Theatre Group Gives Hansel and Gretel

"Hansel and Gretel," a drama-  
tization of the famous fairy tale,  
will be presented by the Wayne  
State University Children's Theatre  
at 10 a.m. and 1 p.m. Monday at the  
Birmingham Theatre.

The production is under the spon-  
sorship of the Birmingham Branch  
A.A.W. Children's Theatre Group.  
The play is directed by T. O.

### Cinerama Tickets Available in B'ham

Tickets for the Cinerama produc-  
tion "It's a Mad, Mad, Mad, Mad  
World" at Detroit's Cinerama  
Music Hall are available at the Bir-  
mingham branch of the Automobile  
Club of Michigan, it has been an-  
nounced by Russ Russo, Music Hall  
manager.

The Automobile Club, 275 S.  
Hunter Blvd., will take reservations  
for all performances of the  
Stanley Kramer production.

which is a regional-rated affair,  
played at the Royal York Hotel in  
Toronto today through Sunday—  
also, the Sectional Tournament to  
be held at the McKenny Hall in  
Ypsilanti, April 17 through 19.

There will also be regional (red-  
point) tournaments this spring at  
Akron, Ohio, and at Lexington, Ky.  
Notice of dates and events will  
appear here later.

Andrus who is in charge of the  
Children's Theatre program at  
Wayne. The settings were designed  
by Russell Smith, technical direc-  
tor, and the costumes are by Tot-  
tie Samuelson, assistant costumer.

**THE CAST INCLUDES** Ruth  
Baum, Gail Hito, Tom Bryant,  
Richard Jedwill, Joyce Kinnon,  
Janet E. Olson, Eric Saunders,  
Ann Taylor, George Wright, Linda  
Ybarondo and William Zeschin.  
The company of actors handles  
all the scenery, costumes, prop-  
erties and sound equipment, as well  
as acting in the play. The pro-  
duction is designed especially for  
a children's audience and runs  
about an hour in length.

The production is part of a 28-  
year-old project of the Wayne  
State University Theatre.

Each year it turns a drama-  
tization of a children's classic, play-  
ing each week end for about three  
months. The productions play to  
an audience of about 30,000, one  
of the largest children's audiences  
in the country.

Tickets are on sale at Grinnell's  
in Birmingham.



A FRIGHTENED GRETTEL IS MENACED BY THE WITCH IN CHILDREN'S PLAY  
Fairy tale reveals excitement behind gingerbread facade

## HAVE YOU TALKED WITH DAD

about selling your home? The market is good and people are looking  
for houses in all price ranges. Consider . . .



S  
O  
L  
D

We are a small exclusive office . . .

We will give you the best personal service available . . .

Our salespeople are well-trained, well-informed  
and ready to listen to you . . .

We sell 85.6% of our listings . . .



**FRED PIERCE INC.**  
460 NORTH WOODWARD, BIRMINGHAM, MICH.  
Midwest 7-1414

### BROUGHTON FARMS

"Brookview Homes"

Open for inspection  
Saturdays and Sundays  
12-5 except Easter



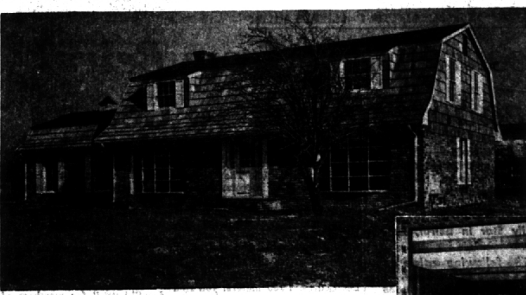
### COLONIAL

Superbly arranged for  
easy, relaxed living with  
a covered porch accessible  
from the work-easy kitchen,  
a paneled Family  
Room with both fireplace  
and Barbeque. The large  
master bedroom has its  
own dressing room and  
bath, and three other twin  
size bedrooms share a  
double "priva-zone" bath.  
A second floor porch in-  
vites sunning and star-  
gazing. Under construc-  
tion—select your colors  
and finished detailing.  
\$42,900.

### QUAD-LEVEL

Unusual in design with  
spacious foyer opening to  
a paneled Family Room  
with side hall to laundry,  
powder room and garage.  
Two separate stairways  
leading up—one to living  
room, dining room and  
kitchen, other to four bed-  
rooms and two baths  
(Master bedroom has  
dressing room) Fourth  
level down has ample  
space for storage and  
hobbies. A truly dramatic  
and different plan. Under  
construction—choose colors  
and details. \$41,900.

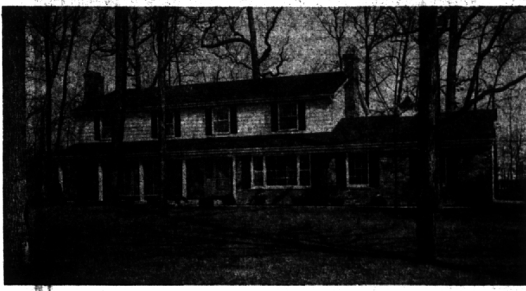
INC.



### CAPE COD

New England charm from barn roof shakes and brick  
exterior to a designed interior with dutch doors, wrought  
iron hardware and pegged floor, beamed ceiling Family  
Room. The floor plan is versatile and practical with large  
bedroom and bath on the first floor and four large bed-  
rooms on the second, serviced by a "priva-zone" (double)  
bath. The equipped kitchen has a bay-windowed break-  
fast area to delight the most fastidious housewife. \$42,900.

Quarton Road — Franklin Area — Bloomfield Schools



## MAX BROOCK INC.

"Nationally Known" Realtors"

MI 4-6700  
JO 4-6700

300 S. Woodward

Open Daily 9-8  
Saturday 9-5

## HAVE YOU TALKED WITH THE KIDS

about this home? It has the paneled rec room they've been wanting plus  
two fireplaces and . . .



A beautiful view . . .

A separate dining room . . .

A Mutchler Kitchen with Hotpoint Appliances . . .

Three Bedrooms, 2 Baths . . .

All wool carpeting . . .



**FRED PIERCE INC.**  
460 NORTH WOODWARD, BIRMINGHAM, MICH.  
Midwest 7-1414