



Even the devout and faithful followers of the Christian Doctrine, a wise old axiom is necessary, and it reads: "God helps those who help themselves." It is to be expected that one can make progress toward any good objective without personal striving. Is it not the plan of every living thing that grows as well as the trees, that each must put down strong roots, thus to gather sustenance for upward growth?

This and That

by George R. Averill
Visit Everglades Park in Florida's Pristine Tropics

FLAMINGO, Fla.—If you have visited one or more of our U.S. national parks, I'm sure that your experiences were pleasant, interesting and educational—for it is traditionally true that these parks are maintained acceptably—especially the natural physical environments of earth, water, vegetation and the animal life native to each.

This, also, can be said of Florida's Everglades National Park—that vast 2,100-square-mile area, the largest subtropical wilderness in North America. It is located at the very southern portion of Florida, starting close to the small city of Homestead, just 30 miles south of Miami.

Millions of visitors to Florida, as well as perhaps a majority of its permanent residents, have yet to spend all or part of their lives in the Everglades. Yet within this practically uninhabited (by white people) area may be observed something of the world's most beautiful and most diverse of the world's uninhabited, floral, fauna and fauna evolution.

With the Tamiami Trail on its northward course, the road extends southward into Florida Bay and from the Florida Keys westward to the Gulf of Mexico. Entering the park over a good road near Homestead, your first visit should take you to the nearby Visitors' Center, where a courteous ranger will provide you with a free and very informative pamphlet that offers just about every phase of the park's history.

AS MENTIONED in the pamphlet: "If you look at a map of the United States, you will see that the shape of Florida suggests a neatly turned foot with the toe pointed toward the tropics. But the tip of the toe doesn't quite reach its mark. Instead, the tropics project their influences northward. Trade winds blowing over the Gulf Stream bring warm, moist air to Florida. Traveling with the warm Caribbean Sea currents, countless forms of tropical marine life, for thousands of years, have colonized southern Florida's shores. Tropical land-plant immigrants are abundant, too. Seeds of these plants were ferried from the West Indies by birds, swept across by sea currents, or airborne by hurricane winds to be planted finally in the windy lands of southern Florida."

At Flamingo you will find several very modern, inexpensive motel-type shelters, put up by Uncle Sam's Department of the Interior and leased to a private concessionaire. Here, too, are located a spacious and beautifully situated dining room, and contiguous to it a lunch counter and souvenir shop, and a museum that simply, yet most interestingly, tells you the story of this part of Florida, in (See THIS & THAT, 7-A)

Bogan Lauds Support Of Community House
After three and one-half weeks of the Community House Fund Drive, Executive Director Robert Bogan said today: "We are pleased with the heart-warming response of the Birmingham-Bloomfield area citizens to our plea. Our goal has been a realistic one, and I think the residents know this and are trying to do their share."
The Community House, at Bates and Townsend in Birmingham, is the "house with a heart" to more than 1400 groups who find it an ideal meeting place through the year, he said.
It is ready, willing and able, Bogan declared, to meet the needs of these organizations as well as offering hospital beds, wheel chairs

Home Rule Bill Gets Reactions

LWV: Changes Unfavorable

Members of the League of Women Voters throughout the state rallied today in opposition to a Senate bill for the implementation of county home rule and in support of the establishment of a joint legislative study committee for implementation legislation.

Senate bill 1970, introduced by senators Drendel, Thayer, Ford and Roberts, had the support of the Michigan League as introduced. It was reported out of committee March 18, with amendments which do not meet LWV standards for county home rule implementation.

"Because of the changes the bill does not now provide for real county home rule," stated Mrs. Thomas Shelham of Birmingham, president of the League of Women Voters of Michigan.

"It is narrow, limiting legislation which gives local voters almost no opportunity to have the kind of county government they want and need."

THE MOST drastic change limits the provision of home rule to counties with less than 500,000 population. This means that only five of Michigan's 83 counties would be able to get home rule," Mrs. Shelham emphasized.

She said, "The bill gives counties no option in the manner of electing a charter commission—it must be appointed by the voters. The partisan election of all county officers specified in the constitutional pattern for general law counties. This gives counties almost no power to change their structure, the most basic reason home rule is needed."

The bill was reported out of committee without recommendation, which means that 18 votes are required to take it off the table.

New Fire Station OK'd For B'field Township
A proposal to replace the first and original Bloomfield Township fire station now headquartered in the basement of the township hall with a new and modern station of few hundred feet away won approval of the township board Monday night.

Township Supervisor Homer Case was authorized to obtain an architect to submit a draft of plans and cost figures. Final board action will be taken later.

THE PROPOSAL submitted by Case envisions use of township-owned property west of the township hall at the intersection of Andover Road and Case said a building 120 by 86 feet would be needed to house the station, administrative offices, training and storage rooms, and garages for pickup trucks.

Oakland Unit: Principle OK

Endorsement in principle, but objections to certain sections of the county home rule bill now pending on the Senate calendar, were expressed today by John H. King, chairman of the Oakland County Home Rule Study Council.

"The bill as now on the Senate floor," King said, "with the exception of the population limitation and the election of present officers provision, incorporates virtually all the objectives of metropolitan home rule advocates."

THE COUNCIL endorsed the principle in the bill of empowering the counties to vote on charters which would reduce the size of the boards of supervisors to a more workable number and permit them to consolidate various boards and committees into departmental under some type of county manager.

The council, King said, does not favor the limitation to counties of 350,000 population or more, on the ground that any county in the state should be permitted to determine its own form of government.

THE COUNCIL also was critical of provisions in the bill which would require all presently elected county officials to continue being elected by the people.

The bill as now drafted, King said, would prohibit Oakland County from creating a department of public works and merging the present county drain commissioner into it.

However, the council praised the bill for providing for election of supervisors from districts of a nearly equal population as possible. Reapportionment would have to take place after each Federal census.

UPDATING OF township building codes was furthered by board action in adopting the City of Detroit Plumbing Code of 1956, including subsequent amendments and also approved on recommendation of the National Electrical Code of 1962.

An addition to the recently adopted BOAC building code was also approved on recommendation of the township building inspector. The board turned down a request from the Birmingham Masonic Temple Association to sit its site on the southwest corner of Woodward and Quarto into the township water system. It was denied on the grounds of lack of capacity to take care of residents not within the township. The site is in the City of Bloomfield Hills.

Name Broomfield Chamber Speaker
Cong. William R. Broomfield (R-Royal Oak) will be the speaker at the annual Birmingham Chamber of Commerce dinner Wednesday, April 22, at Devon Gables. Dinner chairman, Marianne Barnett said past chamber presidents will be honored at the affair. The hospitality hour will be hosted by the six Birmingham banks, Mrs. Barnett said.
Paul Neal Averill, Birmingham Eccentric publisher, will serve as toastmaster and members of the chamber board and their wives will act as host and hostesses.

Sticker Candidates Add Impetus to Hills Election

By DAVE PHILPO
Staff Writer

It should be quite an election in Bloomfield Hills a week from Monday.

With the announcement of two sticker candidates this week by the Citizens Committee of Bloomfield Hills, the total number of persons seeking three seats on the commission has risen to six.

The two written-in candidates are George H. Webb, 140 Harlan, a partner in a manufacturing firm, and Ross Pierce, 106 Hilltop Lane, owner of an electrical corporation.

THE TRIO will wage a campaign in opposition to apartments with more than two stories and feel that they have a mandate from the people in the form of a recent referendum on the subject which indicated that almost 500

Procedures For Library Cards Told

All Bloomfield Township residents applying for Baldwin library cards must furnish identification of township residence, according to Baldwin Library Director Jeanne Ball.

Procedure for obtaining the cards is to apply at the library registration desk.

THOSE TOWNSHIP residents exchanging cards must bring their present card with them. They will be mailed refunds for the unused balance of their old card.

Township taxpayers who do not reside in the township must present their latest tax receipts in order to obtain a card.

Additional library facilities for the Birmingham-Bloomfield library partnership will open late this summer when rented facilities for the Bloomfield Township Library are completed.

Use of the Baldwin Library by Bloomfield Township residents is on contractual arrangement with the township reimbursing the Baldwin Library through a special one-half cent tax voted by the township residents for a township library system.

residents favor limiting apartments to two stories.

Opposing them will be a three-man slate of candidates composed of two incumbent commissioners, James A. Beresford and John Blanchard, and Edward A. Schirmer, 456 Lone Pine Court.

By permitting an increase in stories from two to three, 50 per cent less ground area will be covered by an apartment.

Elevators will be more economically feasible in the three-story town houses, thus diminishing the chances for development of walkups.

That a three-story limitation is more defensible in court than two.

That a 35-foot three-story building set back 150 feet from the street looks lower than a typical two-story building set back 40 or 60 feet.

Because building permits for town houses will be issued with the approval of the board of appeals, the city would have an opportunity to persuade builders to change any unattractive plan, although the city could not legally force developers to do so.

SCHIRMER, employed by the Campbell-Ewald Co., was defeated in a write-in bid for the commission in 1962.

Webb, a graduate of the University of Michigan with a degree in mechanical engineering, holds memberships in the Detroit Athletic Club, Birmingham Athletic Club,

Orchard Lake Country Club, Bloomfield Hills Country Club, A.S.M.E., Engineering Society of Detroit, Society of Automotive Engineers and the U of M Club of Detroit.

"I am interested in keeping the city of Bloomfield Hills primarily a residential area consistent with the past and present type of lots and dwellings," Webb said.

"I AM NOT in favor of commercial activity, either in the form (See CANDIDATES, 6-A)

They believe:

That a 35-foot three-story building set back 150 feet from the street looks lower than a typical two-story building set back 40 or 60 feet.

Because building permits for town houses will be issued with the approval of the board of appeals, the city would have an opportunity to persuade builders to change any unattractive plan, although the city could not legally force developers to do so.

SCHIRMER, employed by the Campbell-Ewald Co., was defeated in a write-in bid for the commission in 1962.

Webb, a graduate of the University of Michigan with a degree in mechanical engineering, holds memberships in the Detroit Athletic Club, Birmingham Athletic Club,

Orchard Lake Country Club, Bloomfield Hills Country Club, A.S.M.E., Engineering Society of Detroit, Society of Automotive Engineers and the U of M Club of Detroit.

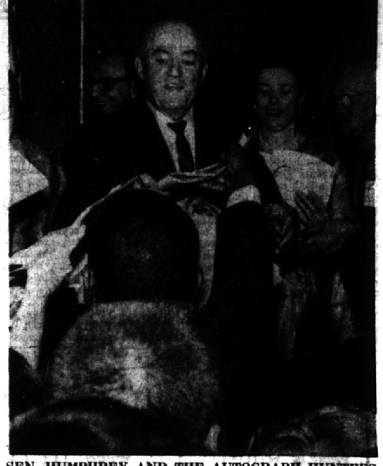
"I am interested in keeping the city of Bloomfield Hills primarily a residential area consistent with the past and present type of lots and dwellings," Webb said.

"I AM NOT in favor of commercial activity, either in the form (See CANDIDATES, 6-A)

They believe:

That a 35-foot three-story building set back 150 feet from the street looks lower than a typical two-story building set back 40 or 60 feet.

Because building permits for town houses will be issued with the approval of the board of appeals, the city would have an opportunity to persuade builders to change any unattractive plan, although the city could not legally force developers to do so.



SEN. HUMPHREY AND THE AUTOGRAPH HUNTERS

Van Wagoner Joins Democrats In Pledge for Party Victory

Preceding U. S. Sen. Hubert H. Humphrey's speech praising the Johnson administration Saturday at the Michigan Democrats' Jefferson-Jackson Dinner, former Gov. Murray D. Van Wagoner, Democrat Party victory in November.

Taking the podium briefly at the Light Guard Armory, Democrat Van Wagoner said "amen" to the earlier statement by former Gov. John B. Swainson.

Swainson had promised, "I will do everything that I can to make sure that we have a Democratic victory, from the White House to the court house."

"I say amen to that," Van Wagoner told 3,000 party supporters at the \$30-a-plate fund-raiser, "Let's do the same."

THE FORMER governor referred to friends' plans for a testimonial dinner, which he scheduled to prevent speculation that he would run

for governor again. Van Wagoner said, "I hated to see the party cancelled. If there's anyone who's for a party, that's me. When it's too late to file for office, maybe we can put this thing on yet."

Another Birmingham resident, University of Michigan Regent Irene E. Murphy, sat with the Democrats' top elected officials Van Wagoner and his wife, at the speakers' table.

SEN. PHILIP A. Hart, formerly of Birmingham, handled the introductions. Former Southfield Mayor Donald Swanson and Mrs. Swanson came to the dinner from Chicago, where he is now regional director of the U.S. Post Office.

The diners heard a Humphrey steam shovel take giant digs at Republican presidential possibilities. Humphrey, himself, is a contender for the Democrats' vice presidential nomination.

Saturday, he contended that Gov. error Scranton of Pennsylvania was evading candidacy "because he knows a losing proposition when he sees one."

HUMPHREY PROPOSED that Mrs. Philip A. Hart, formerly Jane Briggs of Bloomfield Hills, run against a distasteful opponent of her husband, because "Jane can fly circles around any woman."

Lumping Governors Romney, Scranton and Rockefeller together, Humphrey said, "They are a fine men. But they would do much better in private life because then they couldn't really hurt anybody except themselves."

"They are for all the folks—all they know. When things start to get tough, they find out the limited circle they lived in didn't have all the answers."

"WHEN ROMNEY was questioned about being mentioned as (See PLEDGE, 5-A)

Continuing Our Promise!

TO ALL AREA RESIDENTS WE WOULD LIKE TO MAKE IT KNOWN WE WANT YOUR BUSINESS

Regardless Of Where You Travel For Your Price East, West, North or South

MAKE US YOUR LAST STOP!

AND LET US PROVE TO YOU THAT YOU CAN'T BUY FOR LESS THAN RIGHT HERE

at

WILSON Pontiac Cadillac, Inc.

1350 N. Woodward Birmingham MI 4-1930

Birmingham's CENTENNIAL EDITION Deadline For Advertisers Is APRIL 1st

We'd like to be able to contact every firm or individual interested in participating in the Centennial Edition, unfortunately that is impossible for our staff to accomplish. The response has been overwhelming and in order for us not to miss anyone interested in advertising in the Centennial Edition—call us now. Space reservations must be made by Friday, March 27th. Copy deadline is Wednesday, April 1st.

CALL 644-1100 TODAY

The Birmingham Eccentric Advertising Department