

Hats On! For Your Prettiest Look



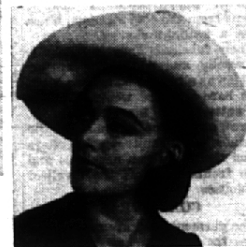
LARGE-BRIMMED "Coolie" hat of silky black haircloth swirls from the gently rounded crown to delicate fringe that beguilingly shadows the eyes . . . from the Hattie Carnegie spring 1964 millinery collection.



WHITE SILK organza pillbox is wonderful counterpart for any spring suit. For sheer flattery, the attached organza scarf is softly bowed under the chin.



BALIBUNTAL SWEPT UP brim, with yards of draped chiffon ending with a large bow, in "The Sweep" from the Miss Alice spring collection.



LARGE PROFILE swagger brim, influenced by the gallant Cavalier, is so right for the classic lines of this season's coats and suits.

Curls Unfurl In Hairstyles For Spring

Look for curls a-head in spring hairstyles for 1964! Hair has been following a straight line for several seasons now, but the prediction for spring is for curl, according to top hairstylists in New York and Paris who are insisting that spring hairdos must be waved and curled, softly feminine to contrast with the unfitted, untrimmed clothes.

And what are women doing about these fashion edicts? The Toni Hairstyling Center reports that they are edging away from the very straight hairdos, adding just a hint of a wave and some curls. But the curls they choose are more like the smooth hairstyles of today than the tight curls of the past.

Waves are wide and shadowy, suggestions rather than definite ripples on the scene. Curls are soft and full, with as much curve as curl. Only the ends of the hair are curled, and frequently this is a finishing touch to the top of an up 'do.

With the changing trend to more curl, every woman now has an opportunity to choose a becoming hairdo with as much or as little curl as she wants. And to help her achieve it, there are now home waves for every hairstyle from smooth and silky to sculptured curves, or for real, rounded curls. Read the package labels carefully to be sure you're selecting the one that's right for you. Then select your home permanent curlers with an eye on their diameter: The larger the curlers used the wider the waves will be. For more curl use the medium size curlers.

Wool and Blended Capes are Tops In Spring Styles

Capes are the swashbucklers on the spring scene, for rain or shine, in wool or blends, or as detachable topping on otherwise classic coats.

But the real bread and butter, from a fashion point of view, is in the classic body with a shade of shaping via curved seams, and a few new twists of decor. The military coat, for one, with brass buttons, epaulettes and lots of classic sailor collars. The new spring softies are lightly fitted, with a hint of a waistline where it ought to be.

The usual range of fabrics and colors appears again. Some marvelous light or bright pastel tweeds are around, quite a bit of navy and beige and ordinary pastels. The really big fabric news is in the lightweights: Lots of rayon linen coats, cottons and soufflé wools.



TRULY FEMININE topping to complement summer's sheerest dresses: a cascade of billowy white hyacinths encrusted on one of this season's popular oversized brims.

20—FASHION SECTION

BIRMINGHAM ECCENTRIC

Handbags Feature New Soft Look

This spring women have fashion all wrapped up—in a leather handbag.

With "softness" the keyword in fashion this season, Leather Industries of America reports that handbags come in a variety of soft, pliant leathers and uncontrived shapes—large and small.

Sleek envelopes, rounded satchels and shirred pouches look handsome under arm, in the hand or swinging from the shoulder. There are also a number of geometric shapes including semi-circles with leather or chain handles, squares and box shapes.

Leathers range from smooth, polished surfaces to napped brushed and suede leathers, from highly gleaming natural patent leather to smartly antiqued leather and, for evening, soft lustre leathers. When shopping, look for the black-and-gold "Genuine Leather" tag that helps you identify real leather in your handbag.

COLOR RAMPANT

Color runs riot in the new leather bags. In smooth, grained and patent leathers you find pastel pink and yellow, scarlet, navy blue, acid green, raspberry and orange. You also find such understated neutrals as oatmeal, oter, taupe, alongside whites, bone and the natural leather colors.

Leather textures in envelopes and vertical bags play a fresh and unique fashion role—matching or contrasting—with fabric surfaces on new spring suits, coats and dresses. Smooth and grained leath-

ers in neutral bone, oatmeal or sand point up texture interest in slubbed silk shantung dresses or tweed suits and bulky coats.

Brushed and suede leathers in box bags interpret a textured look that is strongest in the sand and taupe range. White bags in grained and smooth leather will accent checked and black spring suits.

CHIC DETAILS

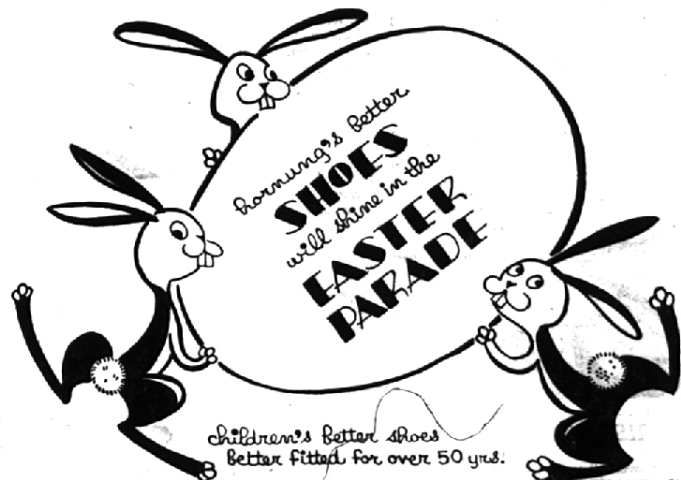
Collar, shape and texture are only part of the new handbag story. New box bags show smart style detailing, such as self-leather handles that may be flexible, or firm like luggage handles. Many of the larger versions have luggage buttons on the bottom.

The always popular grained leather tote bag in navy blue and the full range of tan shades will brighten new Spring costumes, along with pouch-shaped glove-soft grained leather bags in new intriguing styles and pastel colors. Shoulder bags, smart women's companions on shopping trips, are larger than ever this year and sport handy outside pockets.

Fashion-right and eye appealing, light-colored bags are easily cleaned. Smooth and grained leathers wipe clean with a damp sudsy cloth, while brushed and sueded leathers can be spot-cleaned by gently rubbing them with a piece of fine sandpaper. Genuine patent leather maintains its bright finish with an occasional damp "dusting off" to remove film or soil.

A fine idea recently introduced—knitted sport shirts with two pairs of sport socks to match . . . And another one—short socks, anklets, calf length socks, all guaranteed to "stay up!"

GROSSE POINTE • BIRMINGHAM



Clyde E. Hornung

245 Pierce Street
Birmingham

114 Kercheval, On The Hill
Grosse Pointe Farms