

**DOWN TO EARTH**

By ALICE WESSELS BURLINGAME  
Special Writer for The Birmingham Post-Herald

**Old Apple Trees Set Plan For Garden in B'field Hills**

As the creation of a design for a garden comes before we select the plants to go into it, this is the time to evaluate your home garden setting. Does it perform the role you expect it to do as a complement to the architecture of the house?

A perfect example of the wedding of the architecture of a home and the landscaping of a garden is the William G. Shaw residence at 65 Love Lane, Road in Bloomfield Hills.

The garden was planned around three acres of old apple trees more than 150 years old. The home has the lines of an old English cottage with a slate roof built like a thatched roof.

There are no square corners in the structure and the lake can be seen from every room in the house.

THE GARDEN with its wide paths was planned by Mrs. Florence Lynn Norton, a well-known botanist who lived there. The choice selection of plant material with the meaning of shrubs and perennials always makes me feel that this garden was created to rekindle an appreciation of beauty in the eyes and heart of all visitors.

The peonies strive to provide a favorite accent in the garden. You, too, can have a package of beauty at your home if you hold your horses and not expect a rushed, finished job the first season. Here are a few factors to consider: Who is going to do the maintenance? How much native beauty has nature already supplied on the premises?

Begin to clip pictures and ideas for plant selection you like. Build a picture with pockets of beauty which beckons the visitor from area to area.

Have it a quiet place where you can place a bench, your thinking center when you want to be alone?

PLAN A GARDEN which will not enslave you with too much detail but will show character and individuality.

One selection of a vine which always makes any garden outstanding is clematis. It does not give a dense effect but has a long flowering period of sculptured, large petalled flowers.

Some clematis blossoms on new wood and some on old wood. Therefore, the eager pruner should know the characteristic of the selected variety. Henryll with huge chalk white flowers can have a heavy pruning as the flowers come on new spring branches as well as the varieties Mrs. Veillard, Mrs. Andre, Ramona and Jackmann (the last named clematis has large violet-purple petals, and chances are that you saw it on an end of your grandmother's porch, just a few feet from the swing which

hung on chains from the ceiling on the front porch).

WILD FLOWERS will soon be coming into focus with the break of early spring.

Mrs. David Rockefeller, as a member of the New York Botanical Gardens, has as her special interest the creation of a five volume series of books on wild flowers.

Nearly a half million dollars has been raised to underwrite the development of this study which will have around 2,500 illustrations in color photography.

Our many readers with botanical interests will welcome this addition to their basic personal libraries. Many of our finest contributions to knowledge in the natural sciences have come from amateurs.

Novelist William Faulkner, who quit school after the 10th grade, used the money he earned as a teller in his grandfather's bank to buy a wardrobe so dazzling that he was then locally known as "the count." For the rest of his life he dressed the part of a country squire with meticulous care, walking through Oxford, Miss., streets in a trench coat, patched tweeds and carrying a hawthorn walking stick.

**Former Resident Writes Article on Date Processing**

Anthony B. Baldwin, son of Mr. and Mrs. Dwight C. Baldwin, 945 Forest Ave., Birmingham, authored an article in the February issue of "American City" entitled "Make Data Processing Work for You."

He recently completed a total reworking and reorganization of the city's finance department, with emphasis now on electronic data processing machines; however, the machines, chosen after a year and a half of study, were entirely new in combination.

The results have been so successful that many other communities have expressed interest, including the Cleveland Board of Education which recently switched to the same setup.

BALDWIN is director of finance of the city of Euclid, a suburb of Cleveland.

The results have been so successful that many other communities have expressed interest, including the Cleveland Board of Education which recently switched to the same setup.

A 1946 graduate of Baldwin High School, Baldwin is now in his eighth year with the city of Euclid. He lives there with his wife and two daughters.

March 12, 1964 THE BIRMINGHAM (MICH.) ECENTRIC 3-D



**Sagebrush and Skinny**

Television personality Sagebrush Shorty (Ted Lloyd) and his sidekick, dummy Skinny Dugan, are ready for their appearance at The Community House, Birmingham, at 1:30 p.m. Saturday. Sagebrush's show for the children will include magic tricks, pistol handling demonstrations, ventriloquism, stunts, cartoons and audience participation. Tickets should be purchased in advance.

**WITH AVON PLAYERS**

**Birmingham Resident Stars in 'Oklahoma!'**

Roger Easton, 1768 Northlawn Drive, Birmingham, is playing the lead role of Curly in "Oklahoma!" produced by the Avon Players of Rochester.

Performances are at 8:30 p.m. Friday and Saturday and March 19, 20 and 21 at Rochester Central Junior High School.

Easton has sung as a member of the Air Force chorus and the all-male chorus at Michigan State University and has been active in musical comedy and light opera.

FIVE OTHER Birmingham residents also are featured in the production. Peg Kropshot, 16969 Kirkshire, both sings and dances in the show. Mrs. Kropshot is a member of the Birmingham Village Players and has just been cast in the lead for their next presentation, "The Bells Are Ringing."

Chris Andersen, 1058 Floyd, is appearing in "Oklahoma!" as Ali Hakim.

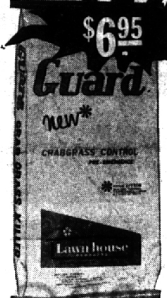
The choreographer is Mia Andersen, 1058 Floyd, who teaches dance at the Birmingham YMCA. She has danced professionally in New York and has done professional choreography.

Lisa Mackie, 2725 Juniper, an

The Jordan River in Palestine flows almost entirely below sea-level. The Dead Sea, into which it runs, is 1,290 feet below the Mediterranean, and the Sea of Galilee 680 feet. No large town has stood on its banks, and it has never been navigable. It is 120 miles in length.

**GUARANTEED PROTECTION AGAINST CRABGRASS**

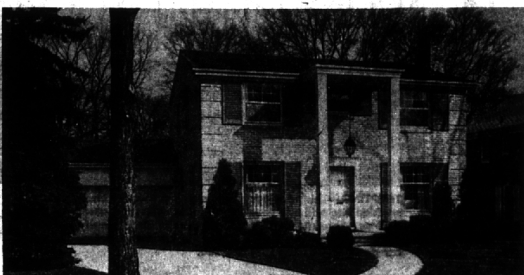
**NEW LOW PRICE \$6.95**



**Covers 2,500 Square Feet**  
For Pre-Emergence Control of crabgrass, barnyard grass, smooth chickweed and knotweed.  
**Maskill Hardware**

4400 N. Woodward, Royal Oak LI 9-3333

**SOUTHERN COLONIAL**



**A fine FAMILY home  
A fine FAMILY area**

Just a short walk to HOLY NAME and QUARTON SCHOOL

Four large bedrooms. Two full and two half baths. Paneled family room — air conditioned. Modern kitchen — large breakfast area

ONLY \$41,500.00  
See DON WHITFIELD

**BERNDT, ETTER & VAN MAAREN, INC.**

360 Hamilton

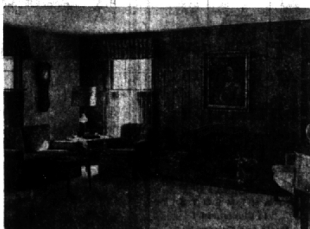
MI 4-3500

**WOODCREST LAKES —**

**A Prestige Subdivision Of Quality Homes**



In the foreground of the above street scene is a most elegant 3-Bedroom Ranch with exquisite decor and detail. Separate Dining room, Separate Breakfast room, 2 1/2 Baths, Family room, 2 Fireplaces. New carpeting and draperies. Underground sprinkler system. Full Basement. THIS MUST BE SEEN!



Glimpse of magnificent living room in home to right. Note the wavy chestnut paneling. The entire house is equally delightful in every aspect.



Large Colonial Bi-Level with a woody ravine at the rear for a year-round scenic view from both levels. Farm style Dining room with the raised hearth open to porch. Lower-level Recreation room with paneled fireplace and bar opens onto patio. Also a "Games Room". 4 Bedrooms, 3 1/2 Baths. Carpeting and Draperies included.



You'd be most "house-proud" with this De Luxe Colonial Ranch. It is a perfect home for entertaining and active family living. 28x16 Living room with formal fireplace. Beautiful Dining room with wall mural. 4 large Bedrooms, 2 full Baths, 2 Lav. Full Basement. Carpeting and Draperies included.



AND note this lovely family room (secluded bar at left), window wall to view and wide door to huge screened Porch which is perfect for summer living and privacy.

All these homes have the finest of equipment and many "extras". Each has its own special charm. CALL US FOR APPOINTMENTS.

**SNYDER KINNEY & BENNETT INC.**  
Realtors

MI 4-7000  
239 S. Woodward, Birmingham

MA 6-9600  
32740 Franklin, Franklin