

Potpourri

By JULIE CANDLER

Hot over the Potpourri pipeline this week comes the weekly Hamden (Conn.) Chronicle's report that Aline B. Saarinen is being considered for appointment as U.S. ambassador to Finland.

The White House confirmed through a spokesman that the former Bloomfield Hills resident is one of several people being considered for the post. Since Finland is the native land of the attractive, brilliant and charming Mrs. Saarinen's late husband, architect Eero Saarinen, she would be ideally qualified for the post. By Potpourri standards, if she goes there, the U.S.A. should have a friend in every Finn.

If Mrs. Saarinen is not offered the post in Finland, she will still be invited to accept another top level post in government, according to the Hamden Chronicle. They quote the White House spokesman as saying that Mrs. S. is considered as "one of the country's outstanding women."

SHE MOVED TO Connecticut when Eero Saarinen & Associates moved their busy and important architectural firm from Birmingham to Hamden. The move came soon after Saarinen's death in 1961.

It was while she and her husband lived in the big brick Victorian house on Vaughan Road that Aline Saarinen wrote "The Proud Professors." She was already noted as associate art critic for the New York Times when her well-written story of America's great collectors was published.

The lovely Mrs. S. got interested in art at age nine when her father took her through great Gothic and French Romanesque churches.

Now, she divides her time between her home in Connecticut and an apartment in New York. She is no longer associated with the Saarinen firm and is becoming a regular on ABC-television. Of late, she has been seen reporting for David and Cher on the evening news. Her hour-long Sunday television special on great art collections was well-received a few weeks ago.

WATCH POTPOURRI for a later report on this exclusive cliff-hanger: will Aline Saarinen become ambassador to Finland?

Whatever happens, one thing is certain. She's coming to Birmingham Feb. 18 and 19 of next year to tell Town Hall audiences about "Collectors and Collecting."

PEOPLE ON THE pipeline are raving about the performance of Mary Tomlin in Samuel Beckett's "Happy Days." It's still on at the Unstable Theatre, where Miss Tomlin nightly fascinates audiences by sinking deeper and deeper into an ant hill.

Another great performance was given recently by Mary Ellen Mead, Birmingham Eccentric Society Editor, who spoke to a large audience at a "Thinkshop" session.

She told her listeners in an entertaining way how NOT to get publicity for their organizations in a weekly newspaper. Beforehand, she was appalled by the idea of the talk, which was to be at a downtown Detroit hotel at 9 a.m. on a Monday, of all times.

Said Editor Mead, "Before 11 o'clock in the morning, I don't even speak to my mother!"

Talk

(Continued from 1-D)

THE "SILLIES" ARE colorful and sprinkled with the violence not usually connected with a first grader's vocabulary — "because the young savage's real imagination is violent," he said.

As a good example, second only to "Mummy Slept Late and Daddy Fixed the Breakfast," Ciardi recited "About the Teeth of Sharks."

"The thing about a shark is—well, one row above, one row beneath, now take a close look. Do you find it has another row behind?"

Still closer—here, I'll hold your hat:

Has it a third row behind that? Now look in and . . . look out! Oh my.

"I'll never know now! Well, goodbye."

The toughest audience to reach, according to Ciardi, are ten-agers. "We have to bribe them with jokes!"

CIARDI BRINGS to task the "prissy" attitude of the school system towards poetry.

"Teachers who are unordained nuns want to categorize poems into neat little topics, as if they weren't natural impulses. They tell students to rewrite the poem into two sentences that make sense—as if the poem already didn't make sense. Thus poetry becomes a dead experience."

Ciardi asked for frivolity in poems. "All of our seriousness is in common with the higher ape. No ape is frivolous, yet some of the best perceptions of mankind have come out of frivolity."

Ciardi listed the five ingredients that are necessary for a written word to be called a poem—diction, rhyme, rhythm, metaphor and form.

"A POEM" doesn't necessarily have to mean anything—although it most have language patterns. It just needs rhythm and a momentary glimpse of form. A poet must realize that there is no form without rhythm.

Making poetry writing seems all

DOWN TO EARTH

By ALICE JULIUS HURLINGAME
Special Writer for The Birmingham Eccentric

Get Out Your Field Glasses, Study Birds' Spring Arrival

The birds are chirping, and it is time to take full advantage of their concert as they arrive in Michigan and announce their arrival. Be sure to have your field glasses placed near a window with a bird book nearby.

A little wooing on your part won't go astray because he is waiting for your expression of interest. Get some beef suet and tuck it into the crotch of a tree or in a large mesh bag.

While bread will give you an extra symphony, especially if it has peanut butter on it. Take a large pine cone and lace it with gobs of peanut butter. It will be easy to hang it from a branch with a wire or string. Of course a commercial mixture is always welcome.

Mrs. Burlingame

My notes show that Juniper prostrate Venusta looks very good. Here we have a low creeping juniper which would be ideal for erosion control or used as a ground cover to express a geometric design.

It is only about eight inches high. Spirea Frobili looks a lot better than Anthony Wateri Spirea with its pink flower. The lines of this shrub were more clean-cut with a rose colored flower for accent.

THE OTHER DAY I was visiting with Mrs. Richard Altman who, by her husband, will be joining March 5, 1964 THE BIRMINGHAM (MICH.) ECCENTRIC 5-D

rewarded many times over by the enthusiasm of those who visited their exposition of garden design and flowers.

They tried to meet the questions of the many people in moderate-priced home sites. Guests were encouraged to walk through gardens.

All members of the family could be interested, as interior decorating was handsomely shown in roomettes, and building construction took priority attention for those with building plans.

My notes show that Juniper prostrate Venusta looks very good. Here we have a low creeping juniper which would be ideal for erosion control or used as a ground cover to express a geometric design.

It is only about eight inches high. Spirea Frobili looks a lot better than Anthony Wateri Spirea with its pink flower. The lines of this shrub were more clean-cut with a rose colored flower for accent.

THE OTHER DAY I was visiting with Mrs. Richard Altman who, by her husband, will be joining March 5, 1964 THE BIRMINGHAM (MICH.) ECCENTRIC 5-D

THE KEATING COLUMN

\$16.900.



Talk about convenience! This step-saver home is right in town, walking distance from shops and schools. It has 3 bedrooms, a large living room with wood-burning stone fireplace, carpeting, all in good condition. An exceptionally good value!

\$22.900.



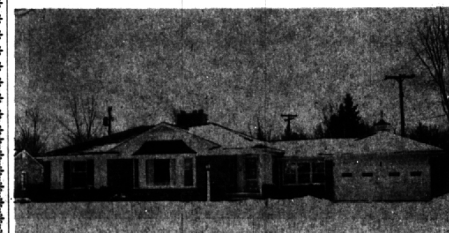
"Here's another home of convenience." 3 bedrooms, family room, walk to Birmingham schools. Gas heat, aluminum storm sash, everything for pleasant living. This won't last. See it now!

\$20.900.



The owners have moved, you can have immediate possession of this lovely rambler. 3 bedrooms, 2 full baths, large family room, sparkling kitchen with all the built-ins. The landscaping is delightful and there is a large screened porch. Carpeting, draperies included. Don't fail to see this!

\$34.900.



Exceptional quality is the key note of this lovely home. There's a most delightful rec room with bar, 3 extra sized bedrooms, oversized garage with automatic garage door openers. The expertly landscaped site is sprinklered, large porch with jalousied windows. This is a most delightful home in a fine location.

VILLAGE COLONIAL

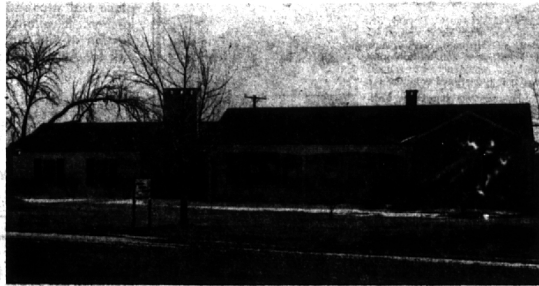


CHOICE BLOOMFIELD VILLAGE LOCATION — Large rear lot with lovely landscaping — a Family area that always has been and will be desirable.

- Huge Living room (25x13) with fireplace.
- Company-sized Dining room.
- Paneled library plus wonderful Jalousied Porch.
- Paneled Recreation room in full Basement.
- 4 Large Bedrooms, 2 Full Baths, 3 half-baths.
- Kitchen with all built-ins including matching stove and Refrigerator.
- Carpeting, Draperies, Porch drapes, Attic Fan.

A Classic type home for happy, active people — priced at \$45,800.

COUNTRY RANCH



½ ACRE WITH BEAUTIFUL VIEW OVERLOOKING RAVINE in a Country Subdivision with winding roads and most attractive homes. Many lovely trees and wide, sweeping lawns.

- Living room (17x17) and Dining room (12x10)
- Family room with fireplace.
- Good-sized Screened and Glazed Porch, Patio, too.
- 3 Bedrooms, 2 Full Baths.
- Aluminum storms and screens. Carpeting, Draperies.

THIS IS A CHOICE SELECTION FOR COUNTRY LIVING at \$26,900.

Birmingham Insurance Agency

114 S. Woodward

Representing:

- AMERICAN INSURANCE CO.
- EMPLOYERS GROUP
- HOME INS. OF NEW YORK
- NATIONAL UNION
- OHIO CASUALTY CO.
- TRAVELERS
- ST. PAUL FIRE AND MARINE



OSCAR P. PETERSON
BRUCE F. RANDALL
FRANK W. WHITSON

MI 4-2422

"After We Sell We Serve"

SNYDER KINNEY & BENNETT

INC.

Realtors

MI 4-7000

MA 6-9500

239 S. Woodward, Birmingham

32740 Franklin, Franklin



245 S. Woodward

MI 6-1234