

Birmingham Musicales Plans To Hear State President

Mrs. Varron L. Vanman, president of the Michigan Federation of Music Clubs, will be guest speaker for the Birmingham Musicales' March 12 Federation Day meeting. The meeting which begins at 1:30 p.m. will feature the musicals of 60-voice chorus under the direction of Alice E. Gram and accompanied by Eleanor Whelan. The instrumental ensemble will be playing with the chorus on some selections included in the program will be excerpts from the "Stabat Mater" by Pergolesi, with solos by Charlotte Ruppel, soprano, and Eleanor Driver, contralto. "Après un Reve" by Faure will be sung in the original French. "How Silently April Takes a Bath" by Bolton. "If you feel like singing, Sing" by Warren and "The Artisan" by Ware are sung by the full chorus. The solo in "The Artisan" features soprano Jean Hale.

THE REMAINING selection on the chorus program is entitled "Summer Morn" and was written by John Phelps with words by Ruth Flanders. Dr. Phelps is the husband of chorus member and past president Dorothy Phelps. Sharing the program with the chorus will be pianist Marion Hahn. Mrs. Hahn will play the "Ballade" Opus 24, by Grieg, which is in the form of a set of variations on a Norwegian Folk Song. Mrs. Hahn received a bachelor of music degree from Marygrove College and later a bachelor in music education from Wayne State University. She was a pupil of the late Bendelson Netorg and taught in his piano school and also in Detroit Public Schools. Mrs. Hahn has appeared as soloist with many local organizations including the Bloomfield-Birmingham Arts Festival.

before the Birmingham Musicales. Currently Mrs. Hahn is teaching piano in the fine arts department of Our Lady of Mercy High School and has a private piano class. Chairman of the day is Mrs. Robert Livesey. The tea chairman is Mrs. Marvin J. Christiansen and her committee includes Mrs. Kenneth I. Keeler, Mrs. Merwin F. Jones, Mrs. Robert F. Connor, Mrs. William C. Simpson, Mrs. Elliott S. Kinney, Mrs. M. Elinor Kelly, Mrs. Phillip H. Piper and Mrs. C. Kenneth Quimble. The hostess chairman is Mrs. William A. Jackson and pouring will be Mrs. Lawrence B. Middleton, Mrs. Ralph Marson, Mrs. John F. Dancke and Mrs. Royal S. Buchanan.

Make a list of those "don't need" today. Dial MI 4-1100 and a Classi Lassi will help you.

SHE HAS APPEARED twice

4-D THE BIRMINGHAM (MICH.) ECCENTRIC March 5, 1964

Cranbrook Taking Registrations for Evening Art Study

Registrations for the spring term of evening drawing and painting classes for adults are now being taken by Cranbrook Academy of Art Galleries, Bloomfield Hills. The 10-week session begins March 17 and continues through May 19. The classes meet Tuesdays from 8 to 10 p.m. in the room beneath the library. The class is planned for adult students who have had some previous instruction in the basic techniques of visual art. Don Willett, who received his MFA degree from Cranbrook is the instructor.

PICTURE FRAMING

EXPERTLY DONE IN OUR OWN SHOP

ART SUPPLIES

FOR THE AMATEUR AND PROFESSIONAL

ART CLASSES

FOR ADULTS AND SCHOOL AGES

Art Library

1220 N. Woodward (E. Side)
2 blocks South of 12 Mile Rd.
LI 8-7680
Daily 9-4, Thurs. & Fri. 'til 9 P.M.

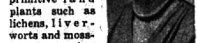


SPRING CONCERT of the Birmingham Musicales will feature (from left) Charlotte Ruppel, soloist-soprano; Alice Engram, director; Eleanor Whelan, accompanist; and Musicales will feature (from left) Charlotte Ruppel, soloist-soprano; Alice Engram, di-

NATURE NOW

When Sea Plants Moved to Life on Land

The colonization of the land by plants of living green was one of the significant events of all time in the earth's history. Previously, the seas were almost populated with a great variety of both plants and animals. Scientists believe that this step from a protected existence in the water to a more hazardous life on land occurred some 400 millions of years ago during Silurian times. No one knows just what the first land plants looked like. For the most part, their tissues were soft, and they left no fossil record. We do know that today's most primitive land plants such as lichens, liverworts and mosses are very simple in structure, and paleontologists who devote themselves to their study believe that they are similar to the first small earth-bound species.



Mrs. Frehee

TODAY'S SIMPLEST land plants reproduce by spores rather than by seeds. Between the functioning of these two great carriers of life, there lies a period of plant development which spans some 200 millions of years. By their living and dying they were instrumental in making the first soil which would in time support such seed-bearing plants as trees, shrubs and flowers.

Although it performs a similar function, a spore is very unlike a seed. Together a mass of spores makes a magic powder which is windborne from such plant parts as a moss capsule, the cone-like structure atop a horsetail or club moss, or the fruiting frond or leaf sort of a fern.

TRAIN A MICROSCOPE on this pale substance and you will see

TV Cowboy To Appear In Person

"Sagebrush Shorty," television personality, and his provocative "bummy" Skinny Dugan, will bring their show to The Community House, Birmingham, at 1:30 p.m. Saturday, March 14. Third in the current series of children's shows, this Western-influenced program is entirely different than previous ones. Ted Lloyd is the real-life name of Sagebrush Shorty. A talented ventriloquist, Lloyd is able to captivate the imagination of youngsters as his voice becomes that of a talking deer, buffalo and rabbit, as well as of cohort, Skinny Dugan, among others. Lloyd was raised in a family where the stage was part of growing up and his father was a magician and ventriloquist. At 18, Lloyd became an announcer and disc jockey for Station KGIL in California's San Fernando Valley. Set in Antonio, Texas, used his abilities in a theatrical presentation of Western Music. It was through this association that the name "Sagebrush Shorty" developed. Since 1949, Lloyd has been performing in television and has been with Detroit channels for more than eight years. His show, naturally, will include Skinny Dugan, along with magic tricks, cartoons, games, audience participation and photo-handling exhibition, using his engraved six-shooters. The authentic, old guns came from the famous collection of Andy Palmer. Refreshments will be served and adult chaperones will be in attendance. Tickets are on sale now at The Community House, Bates and Townsend. The best bargains in town are made through Eccentric West Ads. If you have a "don't need" cluttering up your attic, garage or home, sell it now. Call 644-1100.

By Lydia King Frehee
Special Writer for The Birmingham Eccentric

hundreds of tiny grains. These are magic life-carriers, and when after finding suitable growing space they produce a small intermediate bit of plant tissue, a new generation of their kind has begun. This small intermediate plant will in turn produce the male and female components which, when joined, will produce another spore-bearing generation. This pattern, with some variation, is a condensed statement of the reproductive process followed by spore-bearing plants. It is inefficient and slow and has long since been discarded by today's flowering plants. Here great clumsy amphibians snuggled themselves and huge dragon flies flew among the fern-like foliage.

SPORE-BEARING plants reached their climax in the lush

floras of our coal swamps of some 200-275 millions of years ago. Here in the moist tropical climate great forests of such plants as corallines, cycads, calamites and lepidodendrons lived, died and were buried in the vast waterlogged areas which then covered large sections of the central part of the United States.

AND DURING the latter part of the carboniferous period, the vegetation - eating Brontosaurus waded in the stagnant waters of the swamps, extending his long snaky neck topped with its small blunt head to crop the leaves from a tall tree fern. He needed to eat constantly to provide himself with a daily ration sufficient to support a body which measured 75 feet in length and weighed as much as 70,000 pounds. But there was no bright bird aloft, and no pale flower bloomed in the dim isles of the murky swamp. Millennia would succeed millennia before a creature called man would walk among the dwarfed remnants of this great spore-bearing flora.

HOWEVER, HERE in the Carboniferous swamps, amid the somnolence of the passing days, nature was already developing a new structure which was to revolutionize the story of plant life. In time it came to be called a seed, and we will write about its history in next week's column.

Movie Guide

Parenteen Committee
Birmingham P.T.A. Council

MOVIE	Green Sheet	National Legion of Decency
Charade	A-MY-Y	A-2
Tammy and the Doctor	GA	A-1
Five Weeks in a Balloon	GA	A-1
Mail-Order Bride	A-MY-Y	A-3
Savage Guns	A-MY	A-2
Fantasia		A-2

* recommended as superior entertainment especially for children

CODE GREEN SHEET

These audience symbols are intended as broad guides to selection, and do not indicate either recommendation or non-recommendation of the films to which they are applied.

A Adults
MY Mature Young People
Y Young People (12 years to 16 years)
C Children (unaccompanied by adults)
GA General Audience

NATIONAL LEGION OF DECENCY
A-1 Morally Unobjectionable for General Patronage
A-2 Morally Unobjectionable for Adults and Adolescents
A-3 Morally Unobjectionable for Adults
B Morally Objectionable in Part for All
C Condemned

SC A separate classification is given to certain films which, while not morally offensive in themselves, require some analysis and explanation as a protection to the uninformed against wrong interpretations and false conclusions.

HALL & YOUNG

Showcase of homes

REALTORS

BIRMINGHAM 345 S. WOODWARD MI 6-7900
BLOOMFIELD 4114 W. MAPLE MA 6-5900

OPEN TILL 8 P.M.

AND DURING the latter part of the carboniferous period, the vegetation - eating Brontosaurus waded in the stagnant waters of the swamps, extending his long snaky neck topped with its small blunt head to crop the leaves from a tall tree fern. He needed to eat constantly to provide himself with a daily ration sufficient to support a body which measured 75 feet in length and weighed as much as 70,000 pounds. But there was no bright bird aloft, and no pale flower bloomed in the dim isles of the murky swamp. Millennia would succeed millennia before a creature called man would walk among the dwarfed remnants of this great spore-bearing flora.

HOWEVER, HERE in the Carboniferous swamps, amid the somnolence of the passing days, nature was already developing a new structure which was to revolutionize the story of plant life. In time it came to be called a seed, and we will write about its history in next week's column.

APARTMENTS OF DISTINCTION

Luxurious two and three bedroom apartment homes from \$20 a month. Brochure on request.

FOXCROFT APARTMENTS in Bloomfield
Maple and Telegraph, Phone: JO 6-6218

A TRADITIONAL HOME WITH 4 WONDERFUL WAYS TO MORE VERSATILE LIVING ...



Professionally decorated in Wedgewood Blue, Original Papers flocked to match carpeting, Formal Dining Room and Formal Living Room ...

4 Bedrooms, 2 1/2 baths, Family Room with fireplace ...

Breakfast Room and dream kitchen with every convenience... Professional Landscaping ...

See our Open Houses Saturday—135 Hamilton from 2 to 5
168 Westwood from 2 to 5

FRED PIERCE INC.

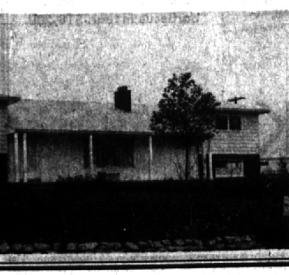
460 NORTH WOODWARD, BIRMINGHAM, MICH.
Midwest 7-1414

A DELIGHT TO SEE

For the older couple desiring a superbly maintained and landscaped home in a uniquely private setting, this brick bungalow is ideal. 3 excellent bedrooms, "garden-view" separate dining room, 1 1/2 tiled baths, and att. 2 car garage. Central air-conditioning and located in FRANKLIN VILLAGE! \$26,900.

HARD TO BELIEVE

This unusual Quad-level home, designed for a large family, has FIVE big bedrooms including a master suite with adjoining den and walk-in closet, huge 26 ft. family room, 2 1/2 baths, formal dining room, basement, and att. 2 car garage. LOOK! \$37,500.



GRACIOUS LIVING

Located in Bloomfield Village, you'll find comfortable living in this roomy Colonial. There are four excellent bedrooms, large paneled library, and 2 full baths plus 2 lavs. For leisure time, an enjoyable jalousied porch and basement recreation room. CARPETED THRUOUT! \$44,500.

COUNTRY STYLE

From the appearance of this sparkling brick and frame ranch set on a "romping-room" size 1 1/2 acre site, you'd never guess the low, low price. 3 nice bedrooms, relaxing family room adjoining a delightful built-in kitchen, and att. 2 car garage. Complete with carpets, drapes, refrigerator, washer, and dryer. JUST \$23,700.

