

Area Resident Makes Plans for Auction Benefit

A Bloomfield Hills man is serving as cochairman of a machinery auction scheduled for Oct. 14 that will benefit the Archives of American Art in the Detroit Institute of Arts.

He is Jack M. Sloan, 1836 Juniper Way, Bloomfield Hills, president of Heldrich Tool & Die Corp. Also a cochairman is Benjamin

Walke, general manager of Machinery Liquidating Co.

SIX THOUSAND Michigan businessmen have been invited to donate used machinery, tools and equipment to the auction, being supported by the Machinery Dealers National Association (Detroit Chapter) and the Detroit Tooling Association.

Liaison man for the event is Harold O. Love, executive vice president of the archives and member of the City of Detroit Arts Commission. More than \$70,000 was raised by the initial machinery auction which he originated two years ago.

Birmingham Architects Design 'Peninsula' House

John P. Morgan & Associates, architects, 187 S. Woodward Ave., Birmingham, are designing an unusual house in Walnut Lake, according to Morgan, who lives at 1816 Norfolk, Birmingham.

The house is located on the north shore of the lake, and its orientation therefore is towards the south. The site is heavily wooded and extremely hilly, with a shallow depression about 100 feet away from the waters edge.

It was this depression that was instrumental in developing the concept of separating the house into two distinct elements. The idea was build the entrance to the north of the depression and the main body of the house to the south of it. The depression, meanwhile, would be flooded by appropriate means, thereby creating an artificial pond.

This formed a sort of peninsula of land on which the house would stand. It, of course, also created a barrier between these two elements.

But, by separating the two garages even further and building an arcade between them extending to the main entrance, a bridge over this barrier was effected, and this link became the spine of the building.



ARCHITECT'S MODEL FOR HOUSE ON 'PENINSULA'

"THE HOUSE has a sort of monumental symmetry to it," says Morgan. "For it has evolved around the axis of the arcade that leads to the entrance."

This entrance, in turn, becomes the nucleus of the house. From it, one can go to any part of the home without passing through other rooms.

As one approaches the house through the arcade, the ceiling is so designed as to get progressively higher, until one reaches the living room where it measures almost 13 feet in height. This elaborate building towards a climatic effect is actually accomplished by lowering the floors until the correct scale is achieved.

To help augment this effect in certain strategic areas, and to raise the ceiling heights even more where necessary, small portions of the ceilings were pushed on up through to become small islands on the roof itself.

THE DESIGN of the building centered on the client's and the

architect's mutual love for a sense of shelter. This was finally realized in the great hovering roof over the building which in the winter would make the interior spaces almost cave-like. In the summer, with the intense heat, the roof would set as a huge parasol and give the necessary shade to the large glass areas below.

Morgan says the structure of the house is almost an epoch in itself. The roof was designed in such a way as to never touch the top of any exterior walls. It is, in fact, almost two feet above them.

This gave the desired hovering effect over the walls and will admit a considerable amount of light to the ceilings of the rooms within, an important factor during the bleak winter months.

The problem was, however, to find a suitable means to support this immense roof and yet to make the supports almost invisible since if the columns along the exterior walls were heavy, the effect sought would be lost.

THE SOLUTION was found in employing a new type of column that Morgan invented several years ago and that is now being patented.

These columns are located on either side of all exterior windows and doors and extend up to the underside of the roof construction.

They are actually part of the window and door frame system and are not easily discernible to the untrained viewer. Thus the structural supports themselves become almost invisible if not completely so.

"These 'columns' are only 3/4 of an inch thick and will be covered by an aluminum plate. The column can support great loads with an extremely small cross-sectional area. This is done by placing the column in tension before erection. "How this is done, however, is the secret, and I cannot divulge the method at present. I do know that the concept is entirely new and will revolutionize certain aspects of the construction industry," Morgan reports.

AAUN Sets Joint Session With UN Club

The Oakland County Chapter, American Association for the United Nations, Inc., will hold a joint meeting with the student United Nations Club of Bloomfield Hills High School at 8 p.m. today.

During the first part of the meeting at the school, 4200 Anderson, student club members will debate the topics.

They have been studying this subject for several weeks and will offer ideas on needed changes.

During the latter part of the evening, Dr. Alvin Loving will talk on "The United Nations in India and Africa." His remarks will be based on his experience in India and Nigeria.

DR. LOVING is a native Detroit, was a teacher, counselor and principal for 20 years in Detroit schools and taught at Wayne State and Western Michigan universities, University of Oklahoma and the University of Michigan.

He was a Fulbright professor to India and was the first dean of students at the University of Nigeria. His present assignment is executive director of the Mayor's Committee on Community Action for Detroit Youth and Youth Employment Project.

The meeting is open to the public, and students are being invited to bring their parents and friends.

Feb. 27, 1964 THE BIRMINGHAM (MICH.) ECCENTRIC 3-D

ACROSS		DOWN	
1. Lowest point	1. Cloudy	16. Venture	31. Joke
2. A wing	2. A wing	17. Small, sharp dagger	32. Rural area
3. Queen of Secular	3. Circular	18. To take off	33. Sharp
4. Notable	4. Notable	19. To take off	34. Sharp
5. To take off	5. To take off	20. To take off	35. Sharp
6. To take off	6. To take off	21. To take off	36. Sharp
7. To take off	7. To take off	22. To take off	37. Sharp
8. To take off	8. To take off	23. To take off	38. Sharp
9. To take off	9. To take off	24. To take off	39. Sharp
10. To take off	10. To take off	25. To take off	40. Sharp
11. To take off	11. To take off	26. To take off	41. Sharp
12. To take off	12. To take off	27. To take off	42. Sharp
13. To take off	13. To take off	28. To take off	43. Sharp
14. To take off	14. To take off	29. To take off	44. Sharp
15. To take off	15. To take off	30. To take off	45. Sharp

Puzzle No. 797

MOORE'S REGAL WALL SATIN Interior latex paint:



Benjamin Moore paints
\$5.85
Gallon

BIRMINGHAM PAINT, GLASS & WALLPAPER
"Everything For The Preservation and Beautification Of The Home"

335 East Maple Between Woodward and Hunter MI 4-3737

STRAIGHT

... from the shoulder
Buy in Overbrook*

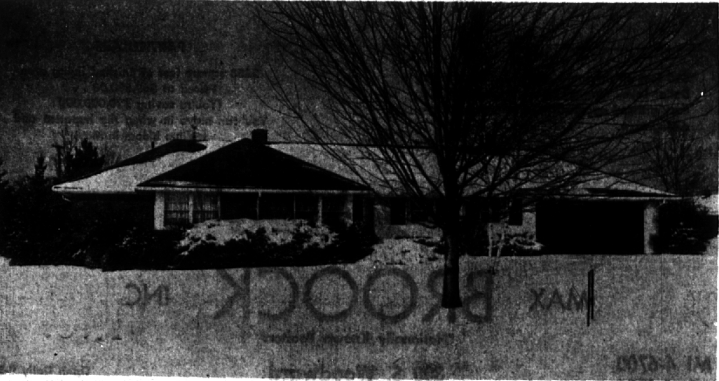
MAX BROOCK INC.
MI 4-6700

*West Long Lake and Lahser Roads.



You Will Be Amazed

at the room in this petite charmer in Beverly Hills. 4 good sized bedrooms, 2 full baths, sep. dining area and eating space in the kitchen. Restful view of treed and landscaped rear yard from the screened porch. Paneled and tiled rec. room in full bsmt. with built-in TV, carpets thruout. Gas heat. You had better hurry on this one.



18 Months New

This four bedroom, 2 1/2 bath colonial with step saving fire - cheered family room off outstanding kitchen with built-ins, is right out of "Better Homes." New carpets and drapes, full basement, gas heat, storms and screens. Walk to Birmingham schools. Just move in and start living. \$30,900.00.

Your Own Private Garden

walled by 30 ft. fir trees may be entered thru the sliding glass window wall from the 23 ft. master suite of this unusual 3 bedroom ranch on quiet cul de sac. 23 ft. fireplace living room with evergreen-framed view of spacious, rail fenced rear yard and charming playhouse. Modern kitchen with eating space. Now \$25,900.00.

Chamberlain Co. REALTORS

MI 6-6000

MA 6-9100