

'Op Shop' Winds Up Winter Selling

The St. James Episcopal Church Opportunity Shop has just completed a winter season of selling clothing on consignment as a means of raising funds. A project of the Episcopal Churchwomen Organization, the "Op Shop," as it is known by its many friends, customers and workers, turns over earnings to the Churchwomen to be used in the Community and Mission help works.

Thus the Shop benefits others than the Consignee and the Customer, as it did this year when at the end of the winter selling season, donations of clothing were made to some 18 institutions, Agencies and individual families.

Franklin Church Hosts Missionaries At Monthly Supper

Rev. and Mrs. James Evans will be the missionary guests at the monthly fellowship supper at the Franklin Baptist Church Friday, Feb. 28, at 6 p.m.

After the supper, Mr. Evans will show slides of Peru where he and his wife will soon be going as missionaries with the Association of Baptists for World Evangelism.

Anyone desiring information about the supper, may call Pastor Mattie at WA 6-7831. The latter part of the program will begin at 7:30 p.m.

Attends Meeting

Mrs. Donald R. Olson, 3310 Dogwood Court, Birmingham, will attend the annual meeting of the Stewardship Council at the 1964 Central East Regional Meeting of the United Church of Christ in Oak Park, Ill., March 2-4.

Wayne Professor Guest Lecturer At Christ Church

Professor Aaron Krasner, chairman of community organization division, school of social works at Wayne State University, will be the speaker at the March 3 meeting of the Episcopal Churchwomen of Christ Church Cranbrook.

Accompanying Krasner will be a graduate student who is doing research on the high rate of violence present in our schools today. Together, they plan to present an objective approach to this current problem in our society.

Krasner is a staff member of the Juvenile Delinquency Control and Training Center of Wayne U., and serves on the board of the Greater Detroit Fair Housing Practices Committee and the Detroit Metropolitan chapter of the American Civil Liberties Union. He has previously been a Fulbright Lecturer in the Netherlands and was formerly director of the United Nations Seminar on Social Work in Oslo, Norway.

These lectures are open to women of the community and the evening will be served between the morning session which will be at 10:45, and the afternoon session. Those who expect to be present for both sessions should make lunch reservations through the church offices before noon of March 2.

First Methodist Woman's Society Hears Dr. Shaw

The Woman's Society of Christian Service, First Methodist Church, will get a glimpse of shepherd life in Palestine at its March 4th luncheon meeting. Dr. Charles Shaw of the Detroit Bible College will present a visual portrayal of the "Twenty Third Psalm" through slides. Dr. Shaw lived in Palestine among the shepherds to obtain these pictures, according to Mrs. Harold Stanton, 942 Donmar Ct., program chairman.

Luncheon will be served at 12:30 p.m. in the Fellowship Hall by circles three and four. Mrs. John Holmes, 614 Wattle Rd., and Mrs. George Tebbel, 1407 Wrenwood, are circle chairmen.

MRS. RICHARD Mange, 350 Arlington, will present devotions. The worship setting will be arranged by Mrs. David Wilcox, 975 Elgiron. Mrs. William Loeche, 1930 Stanley, will provide table decorations.

The Executive Committee will convene for devotions at 9:30 a.m. preceding its business meeting. Nursery care will be available for the day. Reservations may be made with Mrs. Charles Shalberg, 1288 Cedar, ticket chairman.

81% in City Using Cars To Get To Work

(Special to the Eclectic)

Facts and figures have just been released by the government showing the means of transportation used by Birmingham residents, and by people in other areas, to get to work each day.

The survey, which is concerned primarily with the nation's difficult commuting problems, is presented in a 560-page publication called "Journey to Work." It was prepared by the Department of Commerce, incorporating data gathered during the last census.

Locally, it shows, the private car is the chief reliance for the daily trip to work.

OF THE CITY'S 9,086 residents who go to work each day, some 7,318, equal to 81 per cent of the total, commute by car or by car pool.

By way of comparison, the proportion of workers throughout the United States who drive to their jobs is 64 per cent. In the East North Central States it is 66 per cent and, in the State of Michigan, 74 per cent.

To a considerable extent, the nature of each area is a factor in determining the means of transportation used. The compact, highly-urbanized communities have more public transit facilities, as a rule, than do the more rural areas.

In such localities, more people use buses, street cars and rail

THE BYAM ECCENTRIC Page 7-B
Feb. 27, 1964

transit, or walk to work, than in others.

IN BIRMINGHAM, the report shows, there are 430 who are listed as walking to work and 249 who have jobs that enable them to work at home.

For the remainder of the local working population, the means of travel is varied. The number who use buses or street-cars is given as 262, those who commute by train, 238, and those who use taxicabs, motorcycles and other conveyances, 271. The number in the "not reported" category is 210.

The growth of population in the United States, the move toward the suburbs and the steady increase in the number of cars and trucks on the road have greatly complicated the transportation problem.

In some localities, where traffic congestion is most severe, the expanded use of mass transportation, especially buses, is being looked to as a solution.

Remember, dial MI 4-1100 to reach Eccentric readers through efficient and economical classified.

\$1,500 Requested To WSU Scientist

A check for \$1,500 was presented recently to Prof. John Sterling Meyer, 875 Lake Park, Birmingham, chairman of the department of neurology, Wayne State University, by Mrs. Harry Berman. Mrs. Berman presented the check in behalf of a women's organization named, "Sa'ad," Hebrew for "to assist."

The organization is composed of 35 housewives and professional women and each year donates funds for research in nervous disorders, particularly Parkinson's disease.

Thompson, Rev. Zill Active in Services

T. Waldo Thompson, of the C. M. Harmon Company, Birmingham, is one of the presiding officers for Detroit's Noon Lenten Services for the week of March 2-6.

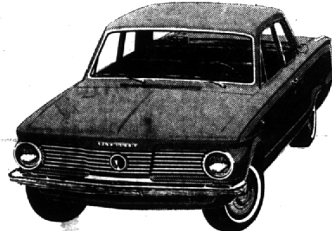
The Rev. Donald G. Zill, pastor of Beautiful Savior Lutheran Church, Birmingham, will also take part in these services at Central Methodist Church, Detroit.

EDWARD J. HALEY

Funeral Director

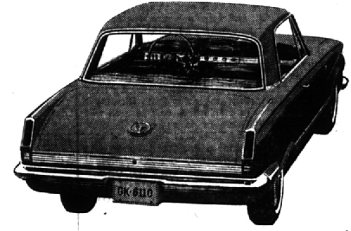
24525 Northwestern Highway
(At 10-Mile Rd.)

Come meet America's four lowest-priced V-8s†
-at your Plymouth Dealer's!



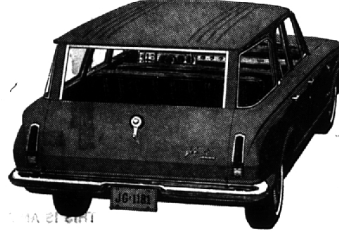
America's lowest-priced V-8 sedan

Valiant



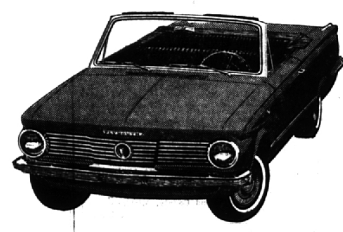
America's lowest-priced V-8 bucket-seat hardtop

Valiant



America's lowest-priced V-8 wagon

Valiant



America's lowest-priced V-8 convertible

Valiant

(There's still only one best all-around compact.)

You name it, Plymouth's Valiant has it in style... V-8 style!

For a compact already thought of as plenty frisky with a "six," Valiant gets even tougher to beat with its new, rip-sporting 273-cu.-in. V-8.

The latest in a long, proud list of

Chrysler engineering achievements, the great new Valiant V-8 engine, built especially for compacts, is lightweight, highly efficient and has just proved its reliability and ruggedness in the tough Monte Carlo Rally.

And you'll be glad to know that

Valiant's new V-8 is protected by a 5-year/50,000-mile engine and drive train warranty, too. Details below.*

America's newest and lowest-priced V-8s are waiting for you... at your neighborhood Plymouth Dealer's. Come have a look.

*HERE'S HOW THE STRONG 5/YEAR WARRANTY PROTECTS YOU: Chrysler Corporation warrants for 5 years or 50,000 miles, whichever comes first, against defects in materials and workmanship and will replace or repair at a Chrysler Motors Corp. dealer Authorized Dealer's place of business, the engine block, head and internal parts, intake manifold, water pump, transmission case and internal parts (excluding manual clutch), torque converter, drive shaft, universal joints, rear axle and differential, and rear wheel bearings of its 1964 automobiles, provided the owner has the engine oil changed every 3 months or 4,000 miles, whichever comes first, 6 months furnished to such a dealer evidence of performance of the required service, and requests the dealer to certify (1) receipt of such evidence and (2) the age-of-the-current mileage.

†Based on Manufacturer's Suggested Retail Prices for sedans, bucket-seat hardtops, station wagons and convertibles, exclusive of destination charges, state and local taxes, if any, whitewall tires, wheel covers (on V-100 models), back-up lights and other optional equipment.

See Valiant's new V-8 in action on "The Bob Hope Show"—NBC-TV.

Plymouth

PLYMOUTH DIVISION CHRYSLER MOTORS CORPORATION

BIRMINGHAM CHRYSLER-PLYMOUTH, INC.

912 S. Woodward, Birmingham, Michigan

IT PAYS TO INVESTIGATE

Dollar for dollar you can't buy better car insurance than Exchange Insurance at the Auto Club. You get the satisfaction of rates that compare favorably with any other company's in addition to such outstanding advantages as Fellow Member Collision Protection, discounts for two-car families, uninsured motorist coverage and fast, convenient claim service.

Do a little investigating on your own today by calling the Exchange representative at your nearest Auto Club office. You'll find that you can't get more for your money!

Detroit Automobile Inter-Insurance Exchange

BIRMINGHAM DIVISION
275 S. Hunter Blvd.
PHONE: 646-4400 or 566-4729
Douglas Brown, Manager

SAVE TO MAKE DREAMS COME TRUE

WISHING WON'T MAKE IT SO BUT SAVINGS CAN!

It may be a lovely new home, that family cabin-cruiser or a brand new car... whatever your dreams are made of, they can be made a reality only through planning and doing. Plan now to set aside a part of your income regularly; do come in and open a savings account here, where savings earn more quarterly... grow faster!

Remember, Savings in by the 10th Earn from the 1st.

4 1/4 %

Compounded and Paid Quarterly On Savings CURRENT RATE (Per Annum)

Capitol SAVINGS & LOAN ASSOCIATION

27215 Southfield Rd. at 11 Mile Rd.
KE 7-6125 Detroit office, 234 State St., WO 2-1078 EL 6-7770