

'Open House' Initiates Fund Drive

Officers of organizations, civic officials and community leaders have been invited to an open house at the home of Edward E. Wilson, 116 Chasteloff, Birmingham, from 8 to 7 p.m. on Feb. 20.

Reason for the informal "get-together" is to familiarize organization leaders with plans for the 1964 Community House Fund Drive, which begins March 1. Operating without subsidy, it depends solely on the contributions of residents.

The continued support of organizations represented by those invited is essential if the Community House is to maintain its role in the community," said Bob Bogan, executive director of The Community House.

A FUND goal of \$55,000 has been set, based on an estimate of administrative and maintenance requirements for the coming year. The present building, a ten-room 2-story structure, was used by more than 190,000 persons during 1963 and accommodated 1400 organizational meetings.

Edward E. Wilson, president of the Pontiac-Cadillac agency in Birmingham, is general chairman of the fund drive. Mrs. William Burum, wife of Birmingham's mayor, is co-chairman. Wilson said "there will be no speeches at the Open House, but the 17-member Community House board of directors will be available to answer questions."

Figure Skater Is Honored By Neighbors

Fifteen-year-old Tim Wood was an honored guest when residents of Lone Pine Village gathered for their eighth annual dinner dance Saturday night.

Tim's appearance at Forest Lake Country Club with his parents, Dr. and Mrs. Kenneth Wood, acknowledged the National Junior Men's Figure Skating Championship won recently by the Bloomfield Hills High School sophomore.

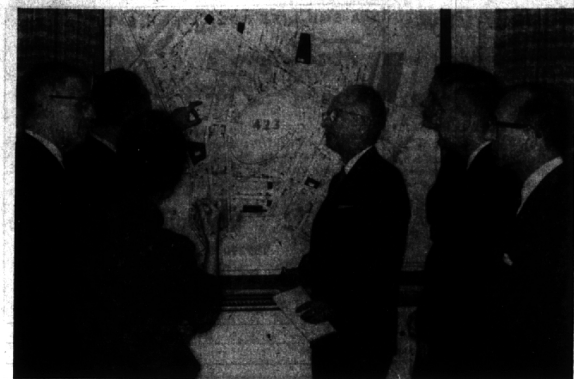
"We neighbors simply wanted to give Tim a pat on the back for the most recent of his many figure skating titles," explained General Chairman Nick Kirkway.

The Woods reside at 4833 Mayflower Ct. in Bloomfield Township.

FOLLOWING DINNER, a four-minute moving picture was shown at the club dining room of Tim's championship performance. Tim's professional teacher, Ronnie Baker, added commentary to the film.

Assisting with arrangements for the dinner-dance were Mrs. William Carrick, Mrs. William E. Thornley, Mrs. J. J. Griffin, Mr. and Mrs. Ben Campbell, Mrs. Darrell G. Miller, Mr. and Mrs. Angus Campbell, Mr. and Mrs. Fred Hanna, Mr. and Mrs. Berkley Voss, Mr. and Mrs. Vic Carnas, Mr. and Mrs. J. B. Caldwell.

Dave Aubrey is president of the Lone Pine Village association.



STUDYING THE COMMUNITY mental health services program in Montefiore district of New York City are members of the Oakland County Community Mental Health Services Board. Left to right are William Wagner of Berkeley, chairman of the finance committee of the board; Robert L. Kahn, Ph.D., and a nurse (back to camera) on the

staff of Montefiore Hospital, New York City; Paul Averill, chairman of the Oakland County Community Mental Health Services Board; Mrs. Henry E. McDonnell, Jr., of Birmingham; Kenneth Roose, Ph.D., Oakland University; and Harry E. Arnkoff, M.D., past president, Oakland County Medical Society.

NYC Services Reviewed By Mental Health Board

Michigan's leader in shaping a new system of mental health services at the community level—the Oakland County's Community Mental Health Services Board—is digging deep to lay out a model program for the rest of the state.

Five members of the 12-member board charged with implementing community health services have just returned from New York City, where they studied some of the nation's foremost programs at Montefiore General Hospital and Bronx Municipal Hospital. The five board members studied services to patients, financing arrangements re-

garding state grants and patient fees, and collaborative services with other public agencies.

William Wagner, of Berkeley, finance chairman for the board, said their first concern in financing community mental health services is to determine how they can redirect monies Oakland County is now spending on mental health services into services at the community level.

"WE ARE fortunate, in comparison to New York, that our state grants will be quarterly advances rather than reimbursements by the state. On the other hand, we learned in New York that we can expect a high degree of responsibility by patients in paying fees for service if we establish a realistic and mandatory fee system that patients understand and appreciate."

Paul Averill, chairman of the Oakland board, saw the Bronx programs as prototypes.

"We were most impressed by the total community approach to services there," he said.

"General practice physicians, the clergy, police, many other non-mental health people are directly involved in their program to cut off the need for long-term hospitalization of mental patients."

"THE BEST example of this was at Montefiore Hospital, where only a

Lewis to Lead Publications For Republicans

Bartram D. Lewis has been appointed GOP chairman of the publications committee for Oakland County, replacing Ray Ballard who has resigned.

Lewis, director for civic affairs for Campbell-Ewald Co., has "come up the route on the political trail" starting with a block worker and working up to precinct delegate and city campaign director for Pleasant Ridge, where he lives.

ACTIVE IN POLITICS for a number of years, Lewis is a member of the Oakland County Committee, the Wayne County GOP Finance Committee and is chairman of the Political Action Committee of the Michigan State Chamber of Commerce. He is also a former city commissioner and Mayor Pro-Tem of Pleasant Ridge and a former member of the Pennington Board of Education.

School Budget Spotlights Reading Needs

Increased services to children with reading problems was given a priority rating by the Board of Education of Oakland Schools members last week when they approved a tentative budget for the 1964-65 school year.

The budget provides for three reading clinics and two trainees from local school districts to diagnose and suggest corrective teaching for children who do not learn to read under regular classroom instruction.

New items to be financed under the proposed \$405,000 expenditure budget are research into the effectiveness of classroom practices and a specialist charged with setting up a county-wide vocational education program.

THE BOARD of Education budget is subject to the approval on Feb. 28 of delegates from the 30 local school boards in the county. It will be submitted to the County Board of Allocation in April for a share of the 15-mill property tax, which is divided among local school districts, county and township governments. The tentative budget would require slightly more than one sixth of a mill, based on the anticipated equalized property evaluation total.

Half of the Oakland Schools budget is to be spent in supporting the improvement of instruction in local school districts. Other major expenses cover educational programs for school lunchroom managers, bus drivers and administrative employees, and fulfilling the requirement of state law teacher certification and child accounting.

ALPINE'S ANNUAL SKI SALE

SKI SHOP

1633 S. Woodward
2 BLOCKS N. OF 14 MILE

STORE-WIDE sale UP TO 50% OFF

WE FEATURE AUTHENTIC SKI WEAR . . . AUTHENTIC SKI WEAR IS FOR SKIING, THE 'SKI LOOK' IS FOR LOOKING.

Feb. 20, 1964 THE BIRMINGHAM (MICH.) ECCENTRIC 5-C

Visiting Nurses Treated 203 Residents in '63

The Visiting Nurse Association of Detroit, a Torch Drive agency, provided care and treatment to 204 residents of Birmingham, eight from Bloomfield Hills and 31 in Bloomfield Township during the past year.

Mrs. Robert A. Varum, 1369 Westwood, Birmingham, was re-elected president at the annual meeting of the VNA Board of Trustees. Serving with her on the board are Mrs. Vena Perry, 1095 Fairfax, assistant secretary; Mrs. Merle Welsh, 854 Fox Run; Mrs. Edgar E. Flint, 1440 Long Lake Road, Bloomfield Hills; and Mrs. Edwin J. Anderson, 235 Harlan, Bloomfield Hills.

Affairs of the VNA in Oakland County are directed by the Oakland County District Committee of which Mrs. George Howard, 30442 Greenbrier, is chairman. Committee members include Mrs. Forbes S. Hassall, 668 Oakland, who represents the committee on the Board of Trustees; Mrs. Clark F. Andrea, 919 W. Glenbury Circle; Mrs. C. E. Dalton, 535 N. Williamsbury; Mrs. F. D. Dodrill, 225 Woodberry; Mrs. Francis Shaw, 4361 Meadowlane Ct.; and Mrs. Earl Triplett, 450 N. Williamsbury.

Cancer Chairman

STANFORD STODDARD, president of the Michigan Bank, has been elected Chairman of the Board of the American Cancer Society's southeastern Michigan division. Stoddard, 2620 Endleigh Drive, Bloomfield Township, will assume the presidency in October when the term of Dr. Harry M. Nelson, 1097 Kirkway, Bloomfield Township, president since 1960, expires. Also elected from Birmingham were Mrs. J. D. Richardson, 1430 N. Glenbury, lay vice president; and Samuel Greenawald Jr., 1727 Cedar Hill Drive, treasurer.

Make your list . . . put an Eccentric Classified Ad to work today. Get results in The Birmingham Eccentric. Most people Dial MI 1100 for better results.

WITH US PICTURE FRAMING IS A FINE ART AND PAINTING RESTORATION A PROFESSIONAL CRAFT

LITTLE GALLERY

915 East Maple, Birmingham, MI 4-5566
Tuesday through Saturday from 9-8

She's . . . GOING OUT OF BUSINESS!

Au Revoir Arre Derci
Many Imports
EVERYTHING MUST GO!
Prices Slashed To Cost Or Less!

Lia #4
it's at
Mary Bragg

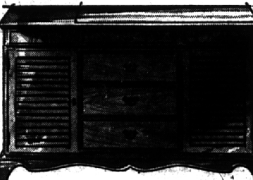
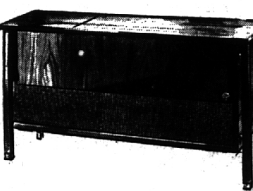
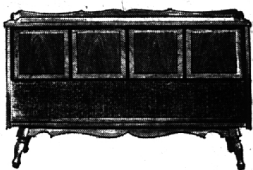
"Fine Clothes For Gentlewomen"
1867 W. Long Lake Road
Bloomfield Hills

Discover PERFECTION of sight and sound

Featuring:

- Garrard Changer
- Electrohome Components
- Satellite Sound
- Jensen Speaker
- Dielcraft Furniture
- Ampex Tape Decks

. . . and so much more



Every Electrohome stereo cabinet is beautifully styled by Diecraft—the award-winning fine furniture division of Electrohome. But beauty is just the beginning of Electrohome perfection. There is a breathtaking difference in reproduction too. The finest components and meticulous craftsmanship create a totally new standard of excellence in stereophonic sound. You will discover haunting new beauty even in familiar recordings, as they are reproduced with richness, brilliance and purity you have never heard before.

See and hear ELECTROHOME

STEREO HI-FI WITH THE DIFFERENCE



FREE! FOR JUST LISTENING!

We have 3 stereo records . . . jazz, popular, classical . . . that we consider a real challenge to any stereo set. Play one on Electrohome . . . then take it home to play on your present stereo. You judge the difference for yourself! Keep the record with our compliments!

FREE!

\$100 WORTH OF STEREO RECORDS

Offer is limited to this week only! With the purchase of any Electrohome stereo set, we will give you free, \$100 worth of stereo records! Selection includes popular, jazz, classical and operatic. Come in today!

If You Haven't Shopped at BEURMANN'S One Of Your Friends Has

But find out for yourself why people who appreciate quality furniture at the right price come to Beurmann's time and time again.

Once you have shopped here you'll know why many Northwest area home-makers make it their headquarters for furniture.

BEURMANN'S carry such quality lines as:

- | | |
|--------------------|-------------------|
| Heritage | Heywood Wakefield |
| Drexel | Stiffell |
| Thomasville | Hekman |
| Pennsylvania House | Loes |
| Linneage | Berne |
| Stearns-Foster | Jamestown Lounge |
| Fisher | Taylor-Jamestown |

Electrohome

Just A Short Drive Out I-96 West To First Howell Exit

BEURMANN'S FURNITURE

2700 E. Grand River
99 Days In The Same As Cash
Howell, Mich.
Free Parking Phone Howell 83



NO MONEY DOWN—36 MONTHS TO PAY

MILK'S APPLIANCES

1493 S. Woodward, 4 Blocks North of 14 Mile Rd.
OPEN DAILY 9 to 9 CLOSED SUNDAY
MI 6-1300