



GOVERNOR OF the Wolverine Boys' State, Charles Bethel (left), exchanges notes with Mike Fleming of Farmington, Michigan's representative to the Boys' National convention, at a round-up meeting held last Monday. Listening in are Kathy Mackenzie, of Girls' State, and Art Heffelfinger (right), voted Commissioner of State Police at the MSU convention.

Local '51st State' Officials Meet

Officials of the "51st State"—the Wolverine Boys' and Girls' State, that met Monday night for a round-up in their activities at their convention last year. Topic of the week-long seminar held yearly at the Michigan State University campus are the problems of self-government in the state. The seminar is planned so that high school students may put into actual practice the theories of American government as taught in the classroom—therefore, the mythical "51st State," sponsored by the Seashore Student Congress, was doubly honored as he was elected governor of Boys' State, in East Lansing.

BIRMINGHAM BOYS who went as representatives, and their sponsors, included Gregory Akin, Business and Professional Men's Post 372; Larry Bell and Scott McNabb, High-12 Club; David Breslow, Groves Student Congress; Jerome Bette, northeast Detroit Kiwanis Club; James Cook, Thomas Dashiell, Art Heffelfinger and Doug Hainier, Bham Post 14, American Legion; Russell Danielson and Robert Swanson, Bham Lions Club; Craig Johnson and Allen Noffs, Metropolitan Club; Hugh McCombs and Gordon Willett, Bham Kiwanis Club; John McGuckin, Sagamore Motor Lodge; Doug Manier, Royal Oak Exchange Club; Paul Newman, Oakland Vulture #1140 at 8; Doug Parris and Sergi Yevich, Bham Exchange Club; and Roger Ulrich, Bham Rotary Club. Birmingham Girls attending

Break-In Attempt Thwarted by Police In Beverly Hills

BEVERLY HILLS—A would-be thief was thwarted in an attempted break-in Tuesday night at Dandy Drugs and Lela Gross Cleaners in the 13 Mile-Southfield shopping center. Officers Jerry Hunter and Greg Putnam viewed the suspect trying to get into the buildings through a vent pipe on the roof. He saw the police officers at about the same time. Hunter gave chase on foot through Acacia Park Cemetery, but lost the suspect on W. Rutland where apparently a getaway car was waiting.

Your Garden Clinic TO KEEP YOU BUSY

and reduce both your present boredom and summer yard & garden problems we suggest—

1. **DORMANT SPRAY**—Apply Scalecide or Lime-Sulphur to trees, shrubs & roses any time the temperature will stay above freezing for 12 hours—and BEFORE spring growth begins.

2. **PRUNING** may be done now. We have the instructions and equipment. DO NOT prune the spring flowering shrubs until after bloom.

3. **MULCH**. It is most important to cover the perennial and bulb beds, roses and evergreen plants to conserve moisture and prevent alternate thawing & freezing. USE MARSH HAY, STRAW, BUCKWHEAT HULLS, PEATMOSS, or VERMICULITE—but USE SOMETHING!

4. House plants collect dust and dirt just as you and your chippendale do. Give them a bath regularly, polish the leaves, feed them, and spray with water every 2 or 3 weeks. Water when dry.

5. Winter damage to plants is caused by QUICK CHANGES IN TEMPERATURE. Spray the needle trees and broad-leaved evergreens with WILT-PRUF (an antidesiccant).

6. It MAY be sentimental, but it surely IS SMART to feed the birds now. Most of our winter feeders are carnivorous. They eat caterpillars (even the wooly ones), beetles, crickets, flies, and aphids, cankerworms, borers, and many such.

KEEP THEM HOME BY FEEDING THEM!

7. **TOOLS & EQUIPMENT**—WE ARE IN GOOD SHAPE TO PUT YOUR GARDEN TOOLS IN GOOD SHAPE CLEAN—ADJUST—OIL—SHARPEN FREE PICK-UP & DELIVERY (No Power Equipment)

8. The DUTCH SALE of garden statuary and ornaments is getting more and more interesting as the prices drop.

NEXT DROP—FEBRUARY 22nd.

McCLELLAN-BALL CO.
Everything for the Land and Garden

880 S. WOODWARD, BIRMINGHAM, MICH.
FREE AREA DELIVERY—Midwest 4-4133

Avoid Stifling Child's Vocabulary, Says Expert

Teachers were urged last week to capitalize on the rich vocabulary of a six-year-old as he enters school.

Dr. Russell Stauffer, director of the Reading Study Center of the University of Delaware, explained his ideas to teachers and curriculum directors at meetings in Bloomfield Hills and Birmingham.

"Even children who are considered 'least ready' to read have a vocabulary of a thousand words," Stauffer said. "Some have as many as 8,000 words in their vocabulary. Our present reading program provides them with a reading vocabulary of a thousand words by third grade."

Stauffer demonstrated that by showing children how their speech looks when it is written down, the number of words a child can learn to read in a few months can be far greater than use of primers permits. He would eliminate primers and primers for class instruction.

His "LANGUAGE experience" approach to teaching beginners consists of having children, one at a time, dictate short stories or sentences to the teacher. She writes what the child says. Teacher and child read the words together, then add the material to the child's personal text book.

Phonics and letter sounds are an integral part of the language experience way of teaching reading, Stauffer said. They are not isolated for special drill.

Stauffer addressed elementary school principals and curriculum supervisors at a luncheon in Bloomfield Hills.

At a meeting with area first grade teachers at Westchester School in Birmingham in the afternoon, he demonstrated, with a class

Suit

(Continued from 3-A)

wood, was named to a three-year term on the Board of Review to succeed Peter Decker, whose term had expired.

Hours for the board of review were set for 9 a.m. to 5 p.m. Tuesday, March 10, and noon to 8 p.m. Tuesday, March 25.

ACTION ON appointees to the board of canvassers was put off until a later date when more applications were received.

The plan for the proposed Nottingham Forest Subdivision 6 between 13 and 14 Mile Roads off Laborer was sent to the planning commission for a report and recommendation.

A request by William J. Pulte that several lots previously kept out of Georgetown Green Subdivision as being in the flood plain of the Rouge River be placed was sent to the planning commission, to the village engineers and to the village attorney for study.

THE COUNCIL moved to pay to Liftmaster, Inc., the amount of \$312.37, from the escrow the firm of Louis Giannetti has on file with the village until a decision is made with regard to the bill.

An investigation of the engineering costs of a crosswalk at Sheridan and Beverly disclosed that the village was charged \$100 for engineering which included the services of two field men, a project engineer and an assistant project engineer.

Councilman Edward M. Shurtliff had objected to the \$100 engineering services bill on a \$300 crosswalk which the residents of the area were paying for.

Shurtliff pointed out that costs of this kind, in his words "completely halt all initiative on the part of civic associations because

W. B'field PTAs Meet to Celebrate Founder's Day

WEST BLOOMFIELD—All PTA's in the West Bloomfield School District were guests of the Green School PTA last week to celebrate their Founder's Day. Dr. Wille, director of mathematics education for the Oakland County Board of Education, spoke on the modern method of teaching math.

Dr. L. A. Hogen, superintendent of schools, reported on the progress of the district's building program.

The fastest, least expensive way to sell any vehicle, new or used is through a low cost Eccentric Want Ad. Place your Want Ad by phone and say "Charge It". Dial 644-1100.

they have to pay so much for engineering."

The administration commission will look into the matter of providing, or buying from Detroit Edison Co., a new aerial survey map of the village.

2 Face Examination In Shoplifting Case

Two Detroit women face examination Feb. 22 in Birmingham Municipal Court on charges of shoplifting.

Beverly Stamps, 21, and Beverly Limbs, 29, were arrested Monday afternoon by police as they tried to leave The Sportman, 184 E. 12th, with two sweaters valued at \$20 each in their possession.

35th Anniversary For E. B. Palmer

Elmer B. Palmer, of Detroit Edison's overhead lines department, will be honored by the company this month upon his 35th service anniversary.

Palmer, who lives at 4262 Pine Tree Trail, Bloomfield Hills, joined the Edison Co. in Ann Arbor in February, 1919.

The record was invented in Germany in 1822, but similar instruments were known to the Chinese for many centuries before that year.

This & That

(Continued from 3-A)

of Detroit's juvenile problems would be eliminated. Governor, Legislators... why not help to relieve this real problem?

Now that President Johnson has appointed Mrs. Esther Peterson head of his Committee on Consumer Interests, that lady is getting much advice from thousands of U.S. housewives. Included in the suggestions received is one begging that she will get hot dog manufacturers to market that famous morsel in packages containing fewer than eight—better to suit those who live alone. (If that idea catches, how far will it affect the other million articles usually found in the modern supermarket?)

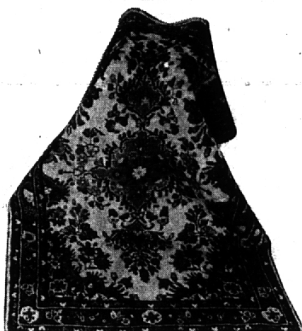
The Birmingham Eccentric

Published weekly in The Eccentric Building, 1215 Bowers St. by The Birmingham Eccentric, Telephone MI 62-4100. Address all mail (subscriptions, change of address, forms 3773) to 1215 Bowers St., Birmingham, Mich.

Henry M. Hagan, Jr., Associate Publisher

Second-class Postage Paid at Birmingham, Mich.

SUBSCRIPTION RATES
(In Oklahoma County) \$1.00
One Year \$10.00
Six Months \$5.00
One Year (Outside Oklahoma County) \$12.00
Six Months \$6.00



SALE genuine Persian Basran ORIENTAL RUGS

If you've ever wanted an oriental rug now is the time to make unusual savings. Beautifully woven hand-knotted rugs of exquisite colors are marked down during February. See them.

12'x8'1"	Super Sarouk	Reg. \$1800.00	Sale \$1199.00
2'8x12'1"	Super Lilahan runner	Reg. 240.00	Sale 159.00
2'x4'	Super Chinese Kanape	Reg. 185.00	Sale 119.00
1'8x2'10"	Super Lilahan Poshie	Reg. 30.00	Sale 19.95

50% OFF Super Hamadan Mat 2'6x4'3" REG. \$70.00 SALE \$35.00

3'6x5'3"	Super Hamadan Namazie	Reg. 160.00	Sale 109.95
2'8x4'5"	Super Lilahan Mat	Reg. 83.00	Sale 55.33
2'2x4'2"	Super Sarouk Kanape	Reg. 106.00	Sale 69.95
4'2x6'3"	Super Lilahan Dozar	Reg. 300.00	Sale 199.95
4'8x6'8"	Super Chinese Dozar	Reg. 440.00	Sale 159.00

1/3 OFF Super Kerman Dozar 4'8x7'6" REG. \$600.00 SALE \$399.00

Other sizes and types are included in this spectacular sale. Qualities are surpassing. Now is the time to buy your oriental treasure.

Best

Open 'til 9—Woodward at 11 1/2 Mile Rd.



RCA VICTOR BRIGHTER COLOR TV FOR 1964



RCA VICTOR New Vista COLOR TV

- 265 square-inch glare-proof picture
- 24,000-volt (factory adjusted) chassis
- Super-powerful New Vista VHF Tuner
- Two keyed color controls make tuning easy
- Two-speaker "Golden Throat" sound
- Dependable Space Age Sealed Circuitry

Prices Start at \$449.95

RADIO VALUES From RCA VICTOR

6 TRANSISTOR POCKETTE BUY!



The ASTERIOD 4R11 Series

NOW ONLY \$10.95

THE MOST TRUSTED NAME IN SOUND

STYLE WINNER IN GIFT-READY BOX



The LUNAR 4R11 Series

NOW AT A NEW LOW PRICE!

TV—RADIO SALES AND SERVICE

NEW CENTER ELECTRONICS, INC.

BLOOMFIELD MIRACLE MILE

2219 S. Telegraph

FE 8-9607

HUSTON HARDWARE WASHINGTON'S BIRTHDAY SALE

REVERE SAUCE PAN

1 1/2 Quart. Pan with cover. A \$6.95 Value.

\$4.89

BRUCE FLOOR WAX

Self-polishing wax. Pint can, regular 59c.

29c

EVEREADY LITE

Magnet lite, 2 cell. Regular \$2.39 value.

\$1.99

PLASTIC RUNNERS

Heavy duty clear plastic. 60" x 30" wide. \$1.59 value.

\$1.39

O'CEDAR MOP

O'Cedar Sponge Mop, regular \$3.98 value.

\$2.79

CELLULOSE SPONGE

Large size 5x7x1 1/2". 75c value.

49c

HOUSE BROOMS

White Swan, treated to resist mold, germs, mildew. \$2.59 value.

\$2.19

FLASHLIGHT BATTERIES

Rayovac regular size batteries. Regular 20c each value.

2 for 29c

CREST NITE LITE

Good for 25,000 hours. Costs pennies a year! 59c value.

49c

TOILET SEATS

With cover. Pink, black, yellow, coral, tan, green, gray, white. Regular \$3.98 value.

\$2.79



The COFFEE CONE

2 to 8 Cup

Enjoy great tasting coffee the filter way and made in only 3 to 5 minutes! See them on display in our window.

\$4.98

Pack of 150 Coffee Cone Filter Paper \$2.98

HUSTON HARDWARE COMPANY

"In The Heart of Birmingham Since 1909"

205 N. Woodward

Open Fri. Eve's.

MI 4-7330

Free Delivery