

# BUSINESS

## BEHIND the STORE FRONTS

Many friends and customers of Mr. and Mrs. Sam Bruni of Birmingham Fruit and Grocery Co., 124 N. Woodward, will remember Sam N. Bruni, Jr., who used to help at the store and on deliveries. Many will recall too, that Sam, Jr. became a dentist about ten years ago and for a time owned a clinic on Hunter Blvd. He is now in practice at Lewiston, N. Y., near Niagara Falls, and his son, Alex A. Bruni, was recently presented the Exchange Club Youth of the month award. The recipient of the award is selected on the basis of extra-curricular activities as well as scholastic averages. He is junior editor of the school yearbook and chairman of the Junior prom.

HE PARTICIPATED in football, track, basketball, softball and bowling, and is active in scouting. He plays the piano and the trombone. Appropriately, he now works part time in a grocery store. In accepting the award, Alex said that his twin brother, Richard, should also share the honor for having served as his campaign manager for school offices. After graduation from high school, Alex plans to attend the University of Michigan and major in psychology. In referring to the senior Bruni family, we are glad to hear that Sam is showing improvement from the illness which occurred before Christmas. He now steps in at the

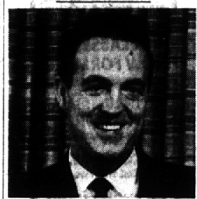
**Deluxe Office Bldg.**  
For Lease  
6,500 sq. ft. Practically new. Good North End location—Large parking—Attractive deal.  
Fred Stussy WO 5-4455  
REAUME & DODDS, INC.

**BANK and SAVINGS & LOAN Personnel**  
Looking for an unusual opportunity  
• Seeking the right man to manage a Mortgage department in outstate office.  
• Challenging future to grow with well-established firm.  
• Please forward resume, photo and references. Confidentiality respected.  
Box 18-D  
The Birmingham Eccentric

## Architectural Firm Announces Reorganization

The architectural firm of Harry M. Denyes, Jr., Associates, Community National Bank Building, Pontiac, Michigan, have announced a recent reorganization of their firm. This move was planned to broaden their scope of services and improve store-office efficiency. Henry S. Orbach, registered architect, has been made associate of the firm in charge of design. Jack I. Lamb, A.I.A., continues in the capacity of chief draftsman, office manager and secretary of the corporation. Richard A. Pearson has been placed in charge of public relations in addition to his other duties as vice president of corporation and project manager.

HARRY M. Denyes, Jr., A.I.A., president of the company, 1447 Buckingham, Birmingham, said the recent remodeling and enlargement of their office and drafting room have added considerably to the facilities and operations. Current work in the firm consists mainly of institutional commercial and educational work. The largest recently completed project is the four story addition to First Federal Savings and Loan of Oakland. About ready for construction is the new Children's Village for Oakland County Juvenile Division of Probate Court to be erected at the County Service Center on Telegraph Road.

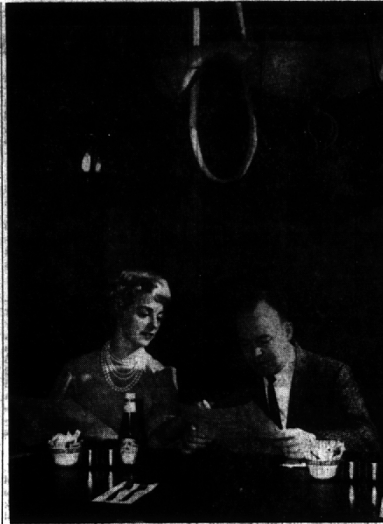


**Franklin Man Elected VP by American Motors**  
A Franklin man, Richard A. Teague has been elected vice president of automotive styling for American Motors Corp. Teague, 27200 Scenic Drive, has been director of automotive styling for American Motors for the past two years and had been assistant automotive styling director since 1959.

He joined the company five years ago in charge of long-range product planning, and later was placed in charge of coordination of advance styling with advance engineering. As director, he has been responsible for the separate styling projects for all three lines of Rambler cars—Ambassador, Classic and American.

TEAGUE, 40, entered the field of automotive styling with General Motors in 1948 following extensive experience in the preliminary design of aircraft and missiles with California aircraft firms. After two years in the advanced styling studios of Oldsmobile and Cadillac, he joined Packard in 1950 as chief stylist. He became director of Packard styling in 1953. In 1957 he joined the Chrysler Corp. as chief stylist for the Chrysler Division. A native of California, Teague is an alumnus of the Art Center School in Los Angeles. He also studied at the University of Southern California.

Put your Eccentric Want Ad message into the hands of those people who will read and act on your ad. Call 644-1100.



**New in Birmingham**  
Margaret and Marshall Rose, along with Rose's brother Carl, are the new owners of Birmingham's Beef 'N Bun restaurant, 181 S. Woodward. The Roses have been in the food business for 12 years, most recently at the snack bar at Pontiac State Hospital. Since taking over the Beef 'N Bun they have installed a cigar and cashier counter. Mrs. Rose serves as hostess during the lunch hour and in the evening.

## Medical Chief At GM Truck Ends Career

Dr. C. G. Darling, Jr., has retired as medical director of GMC Truck & Coach Division under provisions of the General Motors retirement program. The Pontiac physician ends 35 years of service with the division and will now devote full time to his private practice. An medical director, Dr. Darling, 401 Lone Pine Court, Bloomfield Hills, was responsible for the treatment of all accidents occurring in the division.



**DR. DARLING**  
ring in the factory, as well as general health maintenance. He also served in an advisory capacity in matters of plant sanitation and safety.

DR. DARLING pioneered many improvements in the practice of industrial medicine and specialized equipment during his long tenure with the Division. Equipment he helped design included an arm water bath and a compact emergency room table. The physician graduated from the University of Michigan Medical School in 1923 and became medical director of GMC Truck & Coach Division four years later. Dr. Darling is chief surgeon and former chief of staff of St. Joseph

## Pine Lake Estates Opens New Section

Development plans are now completed for the opening of a third new section of Pine Lake Estates in the Bloomfield School District. It has been announced by Donald S. Condon, vice president and general manager of the Howard T. Keating Co., Birmingham.

The 300 home community, located in Oakland County at Pine Lake will have a second man-made lake, private beach for residents and a future shopping center. Homes in Pine Lake Estates are priced from \$25,950 including fully improved 100 ft. lots and all are custom designed in ranch, multi-level or two-story colonial architecture with 2, 4 and 5 bedroom floor plans featuring family room, separate dining room, built-in modern kitchens and attached two car garages.

PRIVATE LAKE privileges are included with the purchase price of the home. Residents enjoy year-round sports activities in this convenient location, just 36 minutes from downtown Detroit, 12 minutes from Birmingham shopping and six minutes from Pontiac shopping. Children attend fine Bloomfield Hills schools.

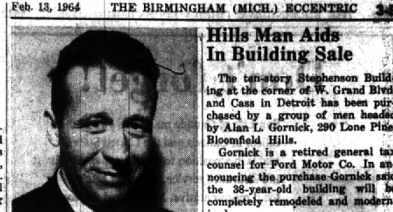
Three furnished models are open daily and Sunday 11 a.m. to 8 p.m.; Saturday to 6 p.m.; closed Thursdays. Howard T. Keating Co.'s trade-in program has proven successful for home-buyers wishing to be assured their existing home is sold before they proceed to build a new home.

Visitors to Pine Lake Estates models may drive out to Long Lake Road west of Middlebelt Road or east of Orchard Lake Road and six minutes from Pontiac shopping. The subdivision is south of Long Lake Road.

The Bank of England, most important bank in the world and the central figure in the banking system of England, was founded by William Paterson in 1694 as a joint-stock association. It was given the right to issue bank notes and a monopoly of a certain kind of banking in England for lending its entire capital to the government. This monopoly lasted until the nineteenth century.

The city of Accra, capital of Ghana, was built on the site of three forts, one British, one Dutch and one Danish. It is now one of the chief ports on the Guinea Coast.

Mercy Hospital in Pontiac; a fellow of the American College of Surgeons, a member of the American Society of Abdominal Surgery and the American Medical Association; and a member and past president of the Oakland County Medical Society.



**Promoted**  
The promotion of William J. Bronsing to the position of executive vice-president of the International Data Processing Institute has been announced. Bronsing, of 248 Oakland, Birmingham, had previously been secretary of the firm which operates school to teach operation of data processing equipment in seven cities in addition to the one in Detroit.

Big Ben, the thirteen and a half ton bell that rings the hours in the Westminster clock tower in London, was named for Sir Benjamin Hall. He was the First Commissioner of Works when the first bell was cast for the clock tower in 1858.

The Egyptian city of Alexandria, founded by Alexander the Great in 332 B. C., is known officially as Iskenderia.

**INVEST WITH A PURPOSE**  
in **6%** Church Bonds  
FOR CONSTRUCTION OF NEW CHURCH  
Denominations: \$250, \$500, \$1,000, \$5,000  
6% Interest Payable  
March 1 and September 1 Each Year  
For Complete Information  
Call — Write — or Visit  
**PEACE LUTHERAN CHURCH**  
17029 W. Thirteen Mile Road  
Southfield, Michigan  
Phones: Midwest 6-4148 and Midwest 6-0958

**TOO YOUNG TO SAVE?**

It's never too soon to start the saving habit... and there's no easier or better place to start than at Birmingham Federal Savings. You — and your children — will earn 4% current rate, compounded quarterly. Start your saving program now.

**4%** CURRENT RATE  
COMPOUNDED and PAID QUARTERLY  
**Birmingham FEDERAL SAVINGS**  
Main Office — 99 W. MAPLE, CORNER OF PIERCE — MI 4-1711  
Bloomfield Office — CORNER MAPLE and LANSER — MI 7-1505  
Berkley Office — 3055 W. 12-MILE RD. — LI 5-7610

**General Electric Co.**  
promising growth potentials  
Sales for 1962 rose to a new peak. G E is the largest producer of electrical equipment, and it occupies a prominent position in electronics and atomic energy. The company has an extensive research and development program. General Electric and its subsidiaries own more than 12,000 U.S. patents. The company has 168 manufacturing plants in 124 cities in the U.S.A., Canada and Puerto Rico. Foreign affiliates operate 45 manufacturing facilities in 12 countries. G E has world wide representation. For complete information on General Electric or other stocks and bonds, call or stop in at either office—naturally, there is never an obligation.  
**MANLEY, BENNETT, McDONALD & Co.**  
MEMBERS NEW YORK STOCK EXCHANGE  
BLOOMFIELD HILLS 647-0900 BURL BLDG. 965-1122 NORTHLAND TOWERS 442-5903  
FLINT • GRAND RAPIDS • LANSING • MUSKOGEE

**Speedwriting**  
NEXT CLASSES START MAR. 16th  
Free demonstration Day School 8:30 a.m. Evening School 6:30 p.m.  
**Pontiac Business Institute**  
18 W. LAWRENCE ST.  
— Federal 3-7028 —