

## Five Candidates File in Beverly

BEVERLY HILLS—Only one new candidate has filed for election in addition to the four incumbents on the council up for re-election March 3.

Maurice Hooper, 18630 Chelton, is the new candidate. He has been a resident of the village since its incorporation and is in advertising and sales promotion with General Motors.

Filing by the deadline Monday for re-election were Marvin E. Oling, president of the council, Hugh C. Allerton, Jr., president pro tem, Edward M. (Ted) Shurtliff, and Claude A. Shephard.

## Home Rule

(Continued from 3-A)

to 400,000 out of a total population of over a million.

With a study of governmental problems in 1958, it became obvious that the county was rapidly becoming a unit of government that could handle area-wide responsibilities and that a legislative home rule grant of power would be necessary if the county government was to meet the needs of a rapidly expanding metropolitan area.

A CONSTITUTIONAL amendment was approved and subsequently ratified by the voters of the state. The amendment stated that "The electors of Dade County, Florida, are granted the power to adopt, revise and amend from time to time a home rule charter of government for Dade County, Florida, under which the Board of Commissioners of Dade County shall be the governing body." The amendment then enumerated the mandatory and permissive provisions to be included in the charter as well as the prohibitions and limitations on the home rule power.

Although the amendment stated that its intent was to "provide home rule for the people of Dade County in local affairs and this section shall be liberally construed to carry out such purpose"; there was a supremacy of state government in general state-wide matters. It stated that Dade County may not levy or collect any taxes except those authorized by general law. This has proven to be a financial straight jacket which has been difficult for the property taxpayer to bear.

The charter which was drafted and adopted in accordance with the constitutional amendment contained a very broad list of governmental powers which could be exercised by the county commission. The charter added, for good measure, the sentence that "no enumeration of powers in this charter shall be deemed exclusive or restrictive."

The constitutional amendment and the home rule charter have been tested in court... the latter many times... and have been adequate.

IN A SPEECH before the National Municipal League Conference in November, Dade County Commissioner Winston Wynne outlined some of the results of seven years of county home rule. He stated that he had substantially reduced the number of bills before the state legislature by combining many local bills into a single Dade County bill. It has increased the awareness and sense of responsibility of county officials who can no longer "pass the buck" to the state legislature and it has deepened citizens' interest and concern in their government and has made them more aware of the responsibilities of citizenship in a democracy.

Mr. Wynne's guidelines for implementing county home rule, based on Dade County's experience, are: (1) provide necessary powers in taxing and revenue producing areas; (2) avoid insofar as possible conflicts with municipal home rule governments; (3) avoid grants of home rule powers which would be so inflexible as to prevent possible reorganizations or simplifications on the local government structure.

THE FINAL STATEMENT is borne out by many persons familiar with the national home rule picture. "One of the factors blamed for the failure of many counties to adopt home rule is that the procedures and requirements of the legislation have been so complex that they have, in effect, prevented the counties from taking advantage of a permissive constitutional provision."

The experience of other states gives further testimony to the fact that the charter commission should be given the greatest reasonable latitude to develop the kinds of government and services needed, if the charter is to be accepted by the people of the county concerned. It is really contrary to the intent of the home rule provision in the Michigan Constitution to tie the hands of those charged with the responsibility of drawing up a plan to meet individual county problems.

NEXT: ANALYSIS OF PROPOSED ENABLING LEGISLATION

we're  
celebrating  
our

# 50<sup>th</sup> BIRTHDAY

WITH



## ABSOLUTELY FREE

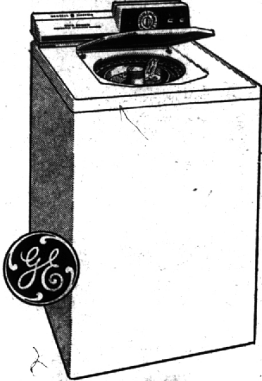
Just for coming in. High quality gold yardstick. Handy for measuring and sturdy enough for spanking.

## GOLDEN DOOR PRIZE

Put your name in the Door Prize Box and you're in the running for a specially gold finished 11" G.E. Portable TV.

## SPECIAL GOLDEN SURPRISES

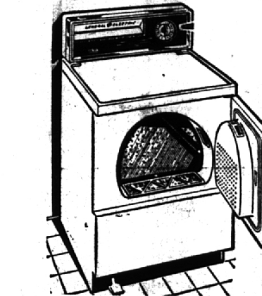
Gold covered milk chocolate candy for the kids, a picture display of old time Birmingham for the adults, and a special golden surprise for everyone making a major purchase.



### TWO-SPEED 12-LB. WASHER

Nobody wants to even think about dirty clothes on Valentine's Day, and with this 12 pound capacity workhorse you won't have to. Famous G.E. filter-flo wash action and convenient two speeds & two cycles pull all your washing chores out of the way in a hurry. At a lovely price of...

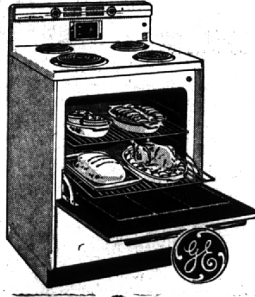
\$177<sup>88</sup>



### AUTOMATIC HI-SPEED ELECTRIC DRYER

You'll fall in love with this G.E. Dryer at sight. It's a very deluxe model with automatic dry cycle to give you just the right heat and shuts off automatically when the load is dry. At the lowest ever love-at-first-sight price of...

\$158<sup>88</sup>



### HI-SPEED RANGE

A real sweetheart of a range with a big 23" wide master oven to make Holiday cooking a joy. Has automatic oven timer, minute minder, and roomy storage drawer too. Best of all, with an electric range you get free Detroit Edison service. At the sweet price of...

\$158<sup>88</sup>



### "FROST GUARD" REFRIGERATOR FREEZER

Men, get with it! You don't want your Valentine defrosting a messy old freezer or refrigerator any longer. This 11 1/2 cu. ft. G.E. model has a big 81 pound freezer that never needs to be defrosted. Roomy door shelves, pull out shelves, and all that stuff, too. You can put your Valentine into a life or luxury for only...

\$238<sup>88</sup>



### CUSTOM DECORATOR STEREO HI-FI

What is the romance of Valentine's Day without sweet music? And this G.E. Stereo AM/FM and FM stereo radio with Garrard record changer gives the sweetest music you ever did hear. It's sweet to look at, too, in antique white and gold cabinet. How sweet it is at only...

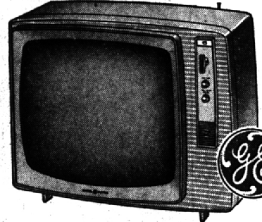
\$225<sup>88</sup>



### 11" PERSONAL PORTABLE TV

You can romance any Valentine on your list in grandiose style with this cute little charmer. The 11" picture is sharp as can be, and the 12 pound weight makes it a cinch to tote around the house, or on trips. The price is so romantically low that we can't advertise it, but it's well worth coming in to check...

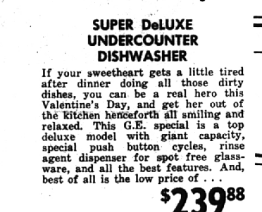
\$?



### 19" DESIGNER PORTABLE TV

Never mind the moonlight and roses stuff, Charley! This TV is just good down-to-earth style and performance. The Daylight Blue picture tube, power transformer chassis, and up front speaker and controls make this a good solid value at Valentine time, or any time at...

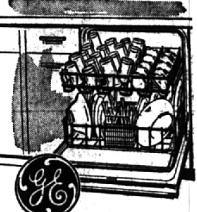
\$138<sup>88</sup>



### SUPER DeLUXE UNDERCOUNTER DISHWASHER

If your sweetheart gets a little tired after dinner doing all those dirty dishes, you can be a real hero this Valentine's Day, and get her out of the kitchen henceforth all smiling and relaxed. This G.E. special is a top deluxe model with giant capacity, special push button cycles, rinse agent dispenser for spot free glassware, and all the best features. And, best of all is the low price of...

\$239<sup>88</sup>



### G.E. DISPOSAL WITH CARBOLOY CUTTERS

Garbage is not a pleasant subject at this tender time, so let's spell it backwards. If you want to get rid of EGBRAG quickly and easily, and want the durability of G.E. with large capacity and carboly cutters, you should urgently consider this value. It's priced at just...

\$58<sup>88</sup>



### G.E. CLOCK RADIO

Your sweetheart will wake up with a smile to music from this handsome clock radio. Sorry we ran out of stock last weekend, but we have a fresh supply in at the same low price.

\$11<sup>88</sup>

### G.E. SPRAY, STEAM, AND DRY IRON WITH FREE "RETURN TO OZ" CHARM BRACELET.

Your chance to make Mother & Daughter both very happy. This iron is the best from General Electric with all the features including spray and water gauge. The Charm Bracelet is the very one featured on TV with seven 24 Karat gold plated charm figures from the Wizard of Oz.

\$18<sup>95</sup>



### G.E. AUTOMATIC COFFEEMAKER

If your Sweetheart is a sleepy sometimes, maybe it's because of bad coffee. Try some made in this automatic 9-cupper with a new selector for perfect flavor every time.

\$11<sup>88</sup>



### G.E. AUTOMATIC SKILLET

Roses are red, violets are blue. This skillet is large, and it's temperature true.

\$14<sup>88</sup>



### G.E. PORTABLE MIXER

Valentines who love to cook will appreciate this lightweight mixer with three speeds and handy ejector.

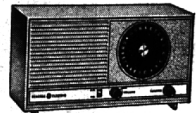
\$9<sup>88</sup>



### G.E. "ADVENTURER" PORTABLE STEREO AND RADIO

The discriminating listener will appreciate the added quality found in this vinyl covered beauty. Garrard changer, G.E. Stereo FM tuner, and four speakers make it a hot Valentine buy.

\$149<sup>88</sup>



### G.E. FM-AM RADIO WITH AFC

Your Valentine will never have to be annoyed by FM fade or drift with this FM-AM radio by G.E. The automatic frequency control locks the station in. The price will never drift lower.

\$26<sup>88</sup>

### G.E. AM-FM PORTABLE

Here is an unbelievable value in an AM-FM portable with G.E. quality and guarantee.

\$29<sup>88</sup>



**Hawthorne** ELECTRICAL COMPANY  
GENERAL ELECTRIC SALES CENTER

MI 4-2200

375 Hamilton, Birmingham

Open Thurs. & Fri. evenings 'Til 9 p.m.

CONVENIENT TERMS!  
Open Thursday and Friday Nites 'Til 9:00