

BRIDGE

in BIRMINGHAM

BY BUD MAYBAUM
Southern Michigan Bridge
Association

One of the recent bridge hands played at the Birmingham YMCA is our hand for today. Slams are usually exciting, and this hand was played at three no trump, six no trump and seven.

Ether Clarke played this hand, and her partner was Hilda Murphy. One must say they were not timid in their auction. We know that if you attended this game you will well remember this hand.

Both Vulnerable: Dealer: South.

(Hilda Murphy)

♠ A K 10 4

♥ A 8 6

♦ K Q J

♣ 8 7 5

WEST EAST

♠ Q 6 5 ♠ 9 8 2

♥ 10 9 3 ♥ 8 7 5 4

♦ 10 9 8 2 ♦ 6 5 4 3

♣ 10 4 3 ♣ Q J

(Dealer) SOUTH

♠ J 7 3

♥ K Q 8

♦ A 7

♣ A K 9 8 2

The Bidding:

South West North East

1 NT pass 2 ♣ pass

2 NT pass 4 NT pass

5 ♣ pass 5 NT pass

5 ♣ pass 7 NT!

Opening Lead: 10 ♣

Although North had 18 high card points, and her partner did respond to two clubs with two no trump, declaring she was on the top of her bid, I do feel that Hilda should have a good five card suit to go the limit.

Another pair who also arrived at the grand slam found the husband angry as he knew that no matter how the club suit split he must lose one trick in that suit and there were not enough tricks without establishing the club suit, so he gave up for down one.

I may add that this pair is one of the most "winning pair" that plays regularly in Birmingham.

These same conclusions were shared by Esther. Inasmuch as the success of this hand depends on an error of the defenders, Hilda and Esther decided to assist them in making this error.

THE OPENING LEAD of the ten of diamonds was won in the dummy and a low heart played. Esther won this trick with the queen and now played the spade suit. When she was able to hook the queen, she discarded a club on the 13th spade.

West, not wishing to disclose his lack of high cards, also discarded a club, and the balance was easy. One might say "rather tricky," and it sure was.

SHOULD YOU DESIRE a life master as a partner in this game, give me the name of this person and I will attempt to get this partner for you or will suggest another

life master for you. All expenses are law deductions.

Recent winners in Birmingham tournaments include Greta Shepherd and Marjorie Vehmeyer, Adele Todd and Lillian Courath, Donna Zogrodsky and Lillie Brunk, Ed Clarke and Jim Crabb, Sandy Stevenson and Grace Stone, Dorothy Thumser and Charles Thumser.

Eve and Peter Dreen, Goldie Fairchild and Vernette Beal, Arlene and Burr Heck, Dick Becker and Terry O'Hearn, Barbara Maduin and Tuckie Stinson, Joan Dickson and Grace Miller and Dickson and Lovine.

Plan Open House

An open house sponsored by the Division of Continuing Education will be held at Oakland University Rochester, from 1 to 5 p.m. Sunday. The open house will provide an opportunity to tour the campus, see the opening of an exhibit in the Oakland University Art Gallery and advance register for spring term adult courses.

Captain Jolly To Entertain Boys and Girls

A man with a thousand voices. This is the description follow entertainers have of Toby David, perhaps better known as Captain Jolly to his young admirers.

He will arrive at 1:30 p.m. Feb. 15 for his annual children's show at The Community House, Birmingham.

Celebrating his 29th year in radio and television, David enjoys high ratings (fourth) among national children's TV shows.

He has worked with Jackie Gleason, Art Carney and Jim Backus. He emceed the President's Birthday Ball in Washington for three years. He is a past president of the Detroit Adcraft Club and a member of the Economic Club of Detroit and Knights of Columbus.

HE HAS WON an award for "outstanding human relations" and is on the board of directors of ALSAC, the leukemia-fighting organization.

In relation to the latter, David as Captain Jolly gives much of his personal time and talents to entertaining the small victims of this disease.

Simply spin your dial to Midwest 4-1190 and a professionally-trained ad-visor will help you prepare your message.

Movie Guide

Parents Committee

Birmingham P.T.A. Council

Green Sheet National Legion of Decency

MOVIE	Green Sheet	National Legion of Decency
Stop, Look and Laugh	A-1	A-1
Zeta	A-1	A-1
Dr. No	A	B
Johnny Cool	A	B
Sword in the Stone	GA-C	A-1
40 Pounds of Trouble	A-MY-Y	A-2
More Over Darling	A	A-3
Condemned of Altona	A-MY	A-3

Recommended as superior entertainment especially for children

CODE

GREEN SHEET

These audience symbols are intended as broad guides to selection, and do not indicate either recommendation or non-recommendation of the films to which they are applied.

A Adults

MY Mature Young People

Y Young People (12 years to 16 years)

C Children (unaccompanied by adults)

GA General Audiences

NATIONAL LEGION OF DECENCY

A-1 Morally Unobjectionable for General Patronage

A-2 Morally Unobjectionable for Adults and Adolescents

A-3 Morally Unobjectionable for Adults

B Morally Unobjectionable in Part for All

C Condemned

SC A separate classification is given to certain films which, while not morally offensive in themselves, require some analysis and explanation as a protection to the uninformed against wrong interpretations and false conclusions.

BAA Reports Big Increase In Enrollment

Mrs. Max Pruehn, education field Hills; Birmingham School System; and City and Country School, Bloomfield Hills.

The BAA now has an enrollment of 597 and is still receiving registrations. A total of 180 adults and 127 children are attending classes in painting, sculpture, weaving and pottery.

A fourth sculpture course has been opened, with Svea Kilne as the instructor.

The offerings of the spring term of eight weeks beginning April 6 will be announced soon. The BAA conducts its classes at the Birmingham Art Center, 1516 S. Cranbrook.

FOUR NEW children's courses were added to meet the heavy demand for these. The BAA has added

BIG CHANGE

. in your neighborhood?

Overbrook* is good insurance!

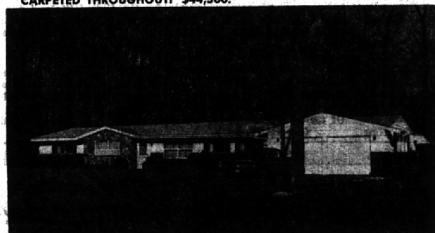
MAX BROOCK INC.

MI 4-6700

*Paved roads, water, sewer, underground utilities



GRACIOUS LIVING—Located in Bloomfield Village, you'll find comfortable living in this roomy Colonial. There are four excellent bedrooms, large paneled library, and 2 full baths plus 2 lavs. For leisure time, an enjoyable jalousied porch and basement recreation room. CARPETED THROUGHOUT! \$44,500.



WHAT MORE could you want? A spacious ranch in a wooded setting with Cass Lake privileges AND within walking distance to public and parochial schools. Four large bedrooms, den or 5th bedroom, 2½ baths plus shower room. Paneled family room, large, heated 2 car garage, garden house, patio with built in grill. SO MUCH for \$37,750.



CLOSE IN LOCATION — Near Seaborn High, this all-shaped Ranch will surprise you. Nicely landscaped and well-maintained, there are 4 nice bedrooms, relaxing family room, 2½ baths, 2 fireplaces, full basement with tiled floor, and att. 2 car garage. VALUE PLUS! \$29,900.



DRAMATIC—You'll Oh and Ah from the moment you step into the striking entry foyer of this Contemporary Tri-level. With the magic openness of beamed studio ceilings, there are 3 twin bedrooms, huge family room, 2½ baths, enclosed porch, large utility-hobby room, and att. 2 car garage. DIFFERENT! \$43,500.

HALL & YOUNG

REALTORS

Inc.

Showcase of homes

"Twin Offices"

BIRMINGHAM

345 S. Woodward

MI 6-7900

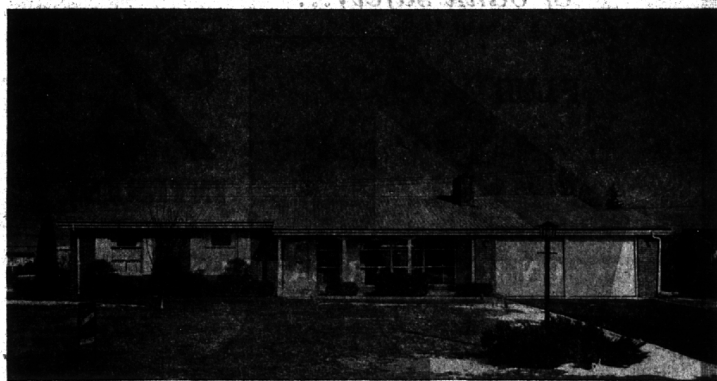
OPEN 'TIL 8 P.M.

BLOOMFIELD

4114 W. Maple

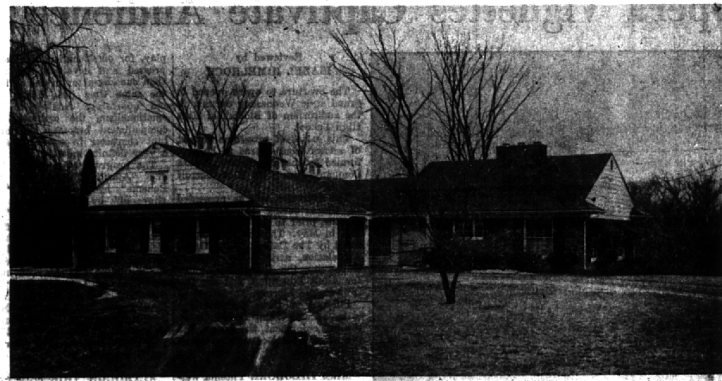
MA 6-5900

"Showcase" features each home listed with Hall & Young in lighted photos and color slides. RESULT — more effective sales exposure for sellers and easier selection for buyers.



The Sparkling Condition

OF THIS "model like" colonial ranch on 100-ft. site near Groves school is what "first" impresses you. 3 unusually large twin-bedrooms and den. Cheerful fireplaced living room, 2½ baths, full tiled bsmt. This is a "big" ranch that you shouldn't miss seeing. \$29,900.



The Awe Inspiring View

of the deep wooded ravine from the gracious rear facing living room or from the casual lower level family room is something of which you will never tire, in this luxurious 3 bedroom, 2-bath Bi-Level on secluded 2 acre site in Franklin. Charming "built-in" kitchen, sep. dining, 2 fireplaces, 2½ car att. gar. make this an outstanding home for the discriminating buyer. Horses. \$44,900.

Chamberlain Co. REALTORS

MI 8-6000