



**BACKDROPPED** by paintings at last year's first Hylozoist Arts Festival are (from left) Robert Ashley, George Manuppelli and Gordon Mumma, of the Once Ensemble, com-

## Offbeat, Hylozoist Artists Plan Their Second Festival

A week-long show of "hot beat but off-beat" art will begin Saturday, Jan. 9, when the Hylozoists—those who blend sculpture, painting and whom—open the second annual Hylozoist Arts Festival at the Northland Center Geodesic Dome, Southfield.

The 14-member group that claims the importance of matter as foremost in its expression of art has scheduled a series of evening events in addition to its exhibit of paintings.

Beginning Jan. 9, the show will remain open and free of charge until Saturday, Jan. 23. Hours are from 9 a.m. to 6 p.m. Monday through Friday and from 10 a.m. to 9 p.m. Tuesday and Wednesday and from 9 a.m. to 9 p.m. Thursday, Friday and Saturday.

**\*MICROGRAPHIC** Sights and

### NATURE NOW

## Winter Not Cold To Birds, Beasts

What would our Michigan Holiday season be without a snow-covered landscape? And nature usually obliges to the delight of all children and many adults.

Trudging along through the softly falling flakes we are well protected by our comfortable winter garb; but what of our birds and beasts?

It is safe to write that it is often of them our winter would not be so hard. Indeed, it is many a blessing; as welcome as a warm day of summer.

One morning I watched a wren in the snow. He fluffed his feathers until he looked like a soft ball, all the while chirping and strutting.

Thus, he created thousands of air spaces between his feathers which act as insulation against the cold.

The chances are he had not been so warm and comfortable since winter began.

Many animals have developed

### Seek Vocalist For Symphony In Southfield

The Southfield Junior Symphony is seeking a soloist for its spring concert which will be presented the end of April.

Auditions, open to school-age performers on any instrument, will be held at 8 p.m. Feb. 15 in the Southfield High School auditorium.

The selection performed should be of musical interest and have a suitable orchestral accompaniment available. Each performer should provide his own accompaniment for the audition and register with Mrs. Fay Gifford or Mrs. Ernest J. Covell before Feb. 10. A fee will be charged to cover expenses.

JUDGES will select the soloist to appear in the 12th concert given by the Southfield Junior Symphony.

The 74 teen-agers, who meet each Saturday morning during the school year for practice, in Southfield High School, are led by Richard Brown, instrumental music teacher in Southfield schools. Anyone interested in joining the group should contact Brown.

The average life of a fluorescent tube depends primarily on the number of times the tube is turned on and off. Voltage and quality of ballasts also affect tube life. The average life of a fluorescent tube is 7,500 hours if its commitment for about three hours each time it is turned on. This life is much longer than that of incandescent bulbs.

bining music and film; Sidney Carus, Hylozoist, president; Gerome Kamrowski, Hylozoist chairman; and photographer Harvey Croze, 380 Lone Pine Road, Bloomfield Hills.

plaster and chicken wire to oil paint, dry pigment and chemical liquid foam to achieve the ultimate in texture and relief.

Some paintings are average size while others require a pick-up truck to transport them to show because of their large dimensions and weight.

The Ann Arbor Dramatic Arts Center ONCE ensemble, young composers and performers, will present two shows during the festival beginning at 8 p.m. Thursday, Jan. 14, and Friday, Jan. 15.

"Spectacular Theatre Events" and "Evil and Antiquity" are slated for Thursday and will include live and taped "way-out" music, along with vocal effects, sound gimmicks and films.

**HYLOZOISTS** traditionally use everything from sand, rope, wood,

By LYDIA KING FREHSE  
Special Writer

**THE SECOND** program Friday includes "Big Digger in Five Parts," selections of contemporary electronic music, and "Interludes from Space Theatre," which is light and sound events. The group will utilize a complex battery of projectors and tape recorders in its experiment in visual images and electronic music.

The ONCE ensemble traveled to New York City and Venice, Italy, last summer to present its unique performance at art and music festivals.

Hylozoists at the '63 Arts Festival at the Northland Dome included a surprise for visitors—a "Happening." Due to pre-arranged faces and a few laughs, this year's event, titled "Agricultural Sculpting," will be at 7:30 and 8 p.m. Thursday, Jan. 21, with three University of Michigan students taking part.

**HYLOZOIST ARTISTS** who will have their work on exhibit include Miriam Axson, Detroit; Mary Beard, 5390 Briarcliff, Birmingham; Sidney Carus, Oak Park; Vivien Cooper, Detroit; Dr. Henry J. Goodman, 26300 Ransmore, Southfield; Winifred Klarin, Detroit.

Ann Dann, Detroit; John Nabozniak, Hamtramck; Emil Leander, Livonia; Florence Spector, Detroit; Sadie Hayms, Oak Park; Gilbert Golander, Detroit, and Milared Friedman, 19298 W. Ten Mile Road, Southfield.

Gerome Kamrowski, Ann Arbor, is chairman of the group.

The Hylozoists, sponsors of the arts festival, have been organized since 1949 and have had exhibits at the Raven Gallery in Birmingham, the Riverside Museum in New York, the Midwest Living Exposition at the Detroit Civic Center, the Jewish Community Center, the Scarab Club and Ohio University (Athens, Ohio). Individual members have had numerous one-man exhibits.

**IF ONE** could see under the snow left by a week-old storm, there revealed would be hundreds of rooms and roadways drilled and dug by wintering animals. To these diligent creatures accustomed to working with the medium earth, getting the same results by probing with their nose or blowing out a hot breath must be lots of fun.

Our seldom seen star-nosed mole uses his unique facial equipment to dig in the snow as waxy tunnels, making winding lanes, roller coasters and hidden cache rooms with rapidity astonishing to a man working with a shovel.

**SUCH HIDDEN** living is best practiced by our northern and western hikers, and those who remain self-sufficient and comfortable throughout the winter under tons of snow.

Tracking animals in the snow is a fine winter sport practiced by many hikers, woodsmen and naturalists. The hunter also increases his chances for success if he knows the marks of tail and claw, of hoof and talon.

"The snow," says John Burroughs, "is a great tell-tale. I cross the field and if only a mouse has visited its neighbor, the event is chronicled."

There is a difference! Serving Detroit Bloomfield Hills Birmingham 21703 Mound Road Warren, Mich. Agents for Allied Van Lines

JO 4-6700

## Exhibit Spotlights 'Critic's Choice'

The Bloomfield Art Association will present an exhibition "Critic's Choice" selected by Michael P. Church, assistant director of cultural activities for the University of Michigan Extension Service, beginning Sunday.

An opening reception for the public will be held from 2 to 5 p.m. Sunday. Church's selection of paintings representative of regional art will be shown through Jan. 31.

Installation of the show is by Jean Brown of Royal Oak. Gallery hours are 2 to 5 p.m. daily except Monday at the Bloomfield Art Center, 1516 S. Cranbrook Road.

Also slated is a talk by Church on the paintings in "Critic's Choice" at 8:30 p.m. Friday, Jan. 15. This program is open to the public, and there is an admission charge for nonmembers.

**BESIDES HIS U.M.** Extension Service post, Church serves as lecturer in art at the university's College of Architecture and Design.

Previously, Church was Extension Service supervisor of statewide and community projects in art, music, theater and creative writing.

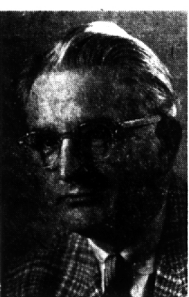
Church studied art at the Wicker Art School, Cranbrook Academy of Art in Bloomfield Hills, Wayne State University and the University of Michigan. He also has studied with Ralston Crawford and Nicholas Marciano of New York.

He served on the staff of the National Music Camp at Interlochen and is active in national organizations, serving as vice chairman of the Committee on Humanities in the National University Extension Association.

He has participated in national programs conducted by the Ford Foundation and the Johnson Foundation.

**CHURCH** organized the Upper Peninsula Arts and Crafts Council and the University of Michigan Annual Regional Exhibition. He publishes a newsletter which reaches artists, craftsmen and other people interested in improving the cultural climate in the State of Michigan.

At present, he is a member of the Detroit Arts Council, serves on the Ann Arbor Civic Arts Commission and for the last 10 years, has served as state secretary of the Cultural Activities Board of Michigan Week.



MICHAEL P. CHURCH

In the last six years, he has served on the Michigan Cultural Commission as executive secretary from 1959 to 1962. Currently he serves as Governor Romney's appointee to the Graphic Arts Committee of the State Council for the Arts.

He is called upon as consultant by many agencies and communities which are concerned with art councils and art centers.

**CHURCH** handles the post-season tour of the Association of Producing Artists for the university's Professional Theatre Program.

All these activities have earned for him a gold medal from the Michigan Academy of Science, Art and Letters. As an artist, his works have appeared in many exhibitions for the last 30 years.

**Cranbrook School Names Recipient for New Scholarship**

John F. Graham, son of Mr. and Mrs. Richard F. Graham of Mecosta, has been named first recipient of the Charles E. Wilson Memorial Scholarship for the current academic year at Cranbrook School.

This scholarship was made possible by the widow and six children of Wilson, former secretary of defense, who was a member of the Board of Trustees of the Cranbrook Foundation at the time of his death Sept. 26, 1961.

## Dr. Sklare To Speak In S'field

Dr. Marshall Sklare, director of the division of scientific research of the American Jewish Committee, will discuss "The Jewish Accommodation to America" at Congregation Sharey Zedek, Northwest Highway at 11 Mile Road, Southfield, on Tuesday evening at 9:30.

Dr. Sklare is the editor of "The Jews: Social Pattern of an American Group" as well as the author of "Conservative Judaism: An American Religious Movement" both of which are standard works in the study of the American Jewish community.

The research projects which he has conducted include the "Rites, Ton Study," an inquiry into the

attitudes of Jewish parents and young people in an eastern seaboard community, and the "Lakeville Study," an intensive investigation into the attitudes of Jews who reside in a suburb of a large mid-western metropolis.

The next lecturer on Jan. 12 will be Dr. Leo Pfeffer, Chairman of the department of political science at Long Island University.

**DR. SKLARE'S** address, sponsored by the Adult Institute Committee of Congregation Sharey Zedek, under the chairmanship of Dr. Harry Bahoror, is the first in an eight-week series from Jan. 5 to Feb. 23, entitled "A Fresh View of American Jewish Life" to which the general public is invited without charge.

If you are a discriminating shopper, you'll find it pays to read the classified pages of The Eccentric today and every week. Read and advertise in the Classified pages. Call MI 4-1100.

Dec. 31, 1964 THE BIRMINGHAM (MICH.) ECCENTRIC 5-D

**"Have a cup on us"**

at **Greenfield's** \*NORTHLAND ONLY

This coupon entitles you to a FREE pot of coffee with your snack, lunch or dinner of 50 cents or more at our new Restaurant across from Northland. (This offer good through January 9, 1965.)

CLIP THIS COUPON

GREENFIELDS HAS 4 LOCATIONS FOR YOUR EATING PLEASURE AND CONVENIENCE:

- 728 S. Hunter Blvd. BIRMINGHAM
- 2961 Woodward DETROIT
- 180 Grand Blvd. DETROIT
- Greenfield Road ACROSS FROM NORTHLAND

# HAPPY NEW YEAR

House for a successful man. Almost new suburban home in Bloomfield—This is a most unusual home, built and equipped by the owner without consideration of cost—a home for entertaining small or large groups—sparkling 49x20 heated and filtered pool—exquisite landscaping—choice close-in location—if you are an exponent of luxury living you should see this.

A picture book setting—with views from most of the windows. Tri-level with Colonial style center hall plan—big living room and kitchen, four bedrooms, family room and den—carpeted and draped—almost new. A home you should see without delay.

**MAX BROOCK INC.**

Established 1895  
Birmingham's Senior Realtor  
300 S. Woodward  
MI 4-6700

MEMBER REAL ESTATE REGULATOR  
NATIONAL ASSOCIATION OF REALTORS  
NATIONAL ASSOCIATION OF BROKERS  
CORPORATION OF AMERICA

Open daily 9-8  
Saturday 9-5

PLANNING A MOVE? CALL IVORY 3 BROS. MOVING COMPANY 536-1060

There is a difference! Serving Detroit Bloomfield Hills Birmingham 21703 Mound Road Warren, Mich. Agents for Allied Van Lines