

AT BHAM COMMUTER STATION

Model Railroad Club Plans Open House, Demonstrations

During National Model Railroad Week, Jan. 16-24, the South Okla...

be held Wednesday, Jan. 22, and Friday, Jan. 24...

membership includes over 15,000 craftsmen.

While some club members have home layouts...

The new extension will double the track length to a total of 24 scale miles.

NATIONAL MODEL Railroad Week is an annual observance established by the National Model Railroad Association...

MODEL CITIES and towns are named for communities served by the prototype GTW Railroad.

NMRA is a world-wide service group established in 1935. Present

Two clinics of special interest to model railroad hobbyists will

Van Buskirk Directs Finances for Schools

Seventh in a Series By LARRY FVOE, City Editor

Lloyd Van Buskirk is the "money man" in the Birmingham Public School system.

as much as \$10 million in interest alone over the next 20 years.

Break the tensions of my nerves With the soothing music of the singing streams.

HE BEGAN his business career with General Motors Research Laboratories and then after a brief stay with S. C. Johnson & Son, Inc.

When he was in charge of the Birmingham school system to take a job with the new Oakland County Community College.

Let me look upward Into the branches of the towering oak

"THE SCHOOLS must maintain a good financial reputation and establish a good image of themselves.

Set Christmas Tree Pick-up in Beverly BEVERLY HILLS—Two days - Jan. 9 and Jan. 11 - have been designated for the pick-up of Christmas trees by the village department of public works.

There are many mental and emotional steps between the thoughts of a depraved one and the cultural morality of a good man or woman.

"It's part of my job to sell the Birmingham school system to the investment bankers," he said.

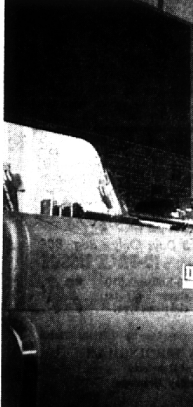
Public school systems, he noted, may invest money in only two ways - government bonds or bank deposits.

Two Birmingham area residents have been elected to membership on Automobile Club of Michigan's board of directors.

VAN BUSKIRK predicts the school district may be able to earn,

Approval for the survey must also be given by the Bloomfield Township Board and the Bloomfield Hills City Commission.

Comments From ... Classified



OVERSEES \$9,395,000 BUDGET Lloyd Van Buskirk is director of finance for Birmingham Public Schools.

ROBERT F. Stanberry, a property owner on the south side of the ditch, has complained of odors emanating from the overflow, according to Gare.

Birth Rate Remains High in B'ham

(Special to the Eccentric)

NEW YORK - Babies continue to be big business in Birmingham.

The figures for the local area have just been released by the U. S. Public Health Service, following a national survey. They show that the birth rate amounted to a steady 20.8 per 1,000 residents in the year ending Jan. 1, 1963.

born to local parents in the city to non-residents.

They are confident, however, that the decline in the number of babies will be reversed by the approaching wave of potential mothers who were born during the baby boom of the 1940's.

baby, outside of medical expenditures, the estimates vary widely.

The total, for a layette, bedding, diapers, furniture, bath-tub and the rest, can be had for as little as \$700 and can also run to more than \$500. The average seems to be in the vicinity of \$300.

Assuming that the average applies in Birmingham, the year's crop of new babies represents an outlay of some \$220,000 on the part of parents, relatives and friends.



The Birmingham Eccentric

December 31, 1964

BIRMINGHAM, MICHIGAN



Serving the Citizens of Michigan's Finest Suburban Residential Area

Bingham Eyes Millage Ex-Mayor of Lathrup For Library Service Dies of Cancer at 69

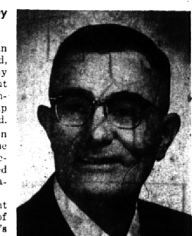
Special Writer BINGHAM FARMS - For its final meeting in 1964, the village council took decisive steps Monday night toward issues which will concern voters in 1965.

al, after which it will appear on the After general election ballot.

lage residents with library services after payment of \$275 was made by an individual donor.

See complete text of a eulogy to Mr. Campbell, 5-A

LATHRUP - The death of John G. Campbell, 69, of 1841 Glenwood, Saturday, brought sadness to many residents of Oakland County, but primarily touched three communities which he served - Lathrup Village, Hazel Park and Southfield.



JOHN G. CAMPBELL

By NITA HARD Special Writer

ENTERED into an interim agreement with the library. A contract was signed in December to provide vil-

After holding two well-attended public hearings in November on the matter of securing professional planning guidance, the council agreed Monday night to go ahead with a review of its zoning program.

CAMPBELL FOR 10 years was general superintendent of the Gust E. Newberg Construction Co., Chicago.

THE PROCLAMATION also said: "Whereas Mr. Campbell encouraged and supported the incorporation of the City of Lathrup Village and was a diligent and energetic worker for the public good;

EDWARD A. WARNICA

RICHARD C. VAN DUSEN

2 Area Men Elected Auto Club Directors

They are Edward A. Warnica and Richard C. Van Dusen. Warnica and his wife Marion live at 1208 N. Glenhurst, Birmingham.

of Crittenton Hospital, planning its new unit at Rochester. He is a member of Detroit Athletic Club and Detroit Commandery No. 1, Knights Templar.

MEANWHILE, a "freeze" on new requests for zoning variances will be in effect for 60 days.

Richard N. Cogger, present mayor of the city, paid special tribute to Campbell Tuesday by proclaiming 12 hours - from noon

FUNERAL SERVICES were to be held at 12 noon - from noon

BE MODERN WITH LOUVERS

Advertisement for Louvers Saloon Type Doors, featuring various window and door options with prices.

Seek Agreements For Survey of Bloomfield Drain

Birmingham city commissioners Monday night agreed to take part in the cost of a survey of the old Bloomfield drain in an effort to stop the pooling of water and overflow into the Hooge River.



Surprises ... and lots of interesting what-nots run rampant throughout the pages of The Eccentric Want Ads.

BIRMINGHAM LUMBER & SUPPLY CO. 1025 HAYNES STR. MI 4-3636