



What's a 'Lunar Bug'?

Pine Lake School children (and their parents, too) learned about the race for outer space Dec. 4 when two representatives of the National Aeronautics & Space Administration came for a visit. The miniature "Lunar Bug" held by Betsy Malarkey (left), 11, and Principal Buster Utterback and the Gemini capsule with Scott McPherson, 11, were two of the exhibits displayed by Paul W. Lampkin (center) and his NASA coworker, Jeri D. Ochab.

Michigan School Receives Grant

Northern Michigan University has received an \$11,623 grant from the National Institutes of Health for continuation of research in the use of carbon dioxide by plants. It is the third consecutive year that Northern has been awarded a NIH grant for the project which is under the direction of Dr. Thomas Griffith, NMU biochemist. The project utilizes radioactive tracers to study ways in which plants take carbon dioxide from the air and convert it into different plant compounds. RADIOACTIVE compounds are fed to tobacco plants to determine how the plants produce amino acids and alkaloids. Certain compounds are extracted from the plants and the molecules are broken down into smaller parts to determine the specific location of radioactive material. One of the significant aspects of the project is to discover the role of the alkaloids in plants, why they are present in plants, and what they do. The relationship of alkaloids to amino acids and certain vitamins such as niacin also is being sought. Associated with the project is Dr. Gail Griffith, assistant professor of chemistry at Northern, and several student assistants. Two transcontinental railroads cross Arizona.

Add 4 Officers In Beverly Hills

BEVERLY HILLS — Four new officers have been added to the village's department of public safety. Two will fill vacancies caused by resignations and the others are part of an expansion program. James E. Hammond, 24, of Royal Oak is a graduate of Troy High School and served in the U. S. Marine Corps for three years. He was discharged a year ago.

RONALD V. Germaine, 24, of Berkley is a 1962 graduate in police administration from Michigan State University. He was recently discharged as lieutenant in the U. S. Army. Henry T. Kelly, 23, of Detroit is a Cooley High School graduate and served four years in the U. S. Air Force. Gary G. Evans, 21, of Detroit graduated from Osborne High School.

Highway Unit Sets M-59 Parking Ban

A one-half mile no parking zone on M-59 in Oakland County has been put into effect, the State Highway Department announced this week. The parking ban is on the north side of M-59 and extends about one-quarter mile each way from Duck Lake Rd., about three miles north of Milford. The parking ban was made necessary because roadside development in the vicinity of Duck Lake Rd. has attracted parking on the shoulders of M-59, even with adequate off-highway parking available. Parked vehicles were interfering with the vision of drivers entering and leaving driveways in the area. Traffic conditions at the intersection were studied by the State Highway Department, Michigan State Police and the Oakland County Sheriff's office. They recommended the parking ban.

The Birmingham Eccentric

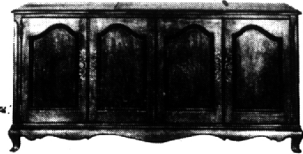
BIRMINGHAM, MICHIGAN
DECEMBER 17, 1964

A reasonably long life has taught me a number of important facts; one of them is: if one knows no more about mathematics, or does not use its truthful processes, than one does about God and the plain, everyday necessities of economics, civics, and the value of applying the mores of morality, then that one could not make two times two or two plus two is four. The Golden Rule and the Ten Commandments spell it out!

SECTION
F
IN THIS SECTION:
General News

Men, Boy's Wear Is Bold, Dressier

Shaped clothing will bring a somewhat bolder and dressier look to men's wear. Shirt collars will be larger, bolder types popular a year ago. Suits and hats, to be worn by slightly higher in back with a bit more spread to the points and ties will have a larger knot.



PILOTS

UNQUESTIONABLY THE WORLD'S
FINEST STEREO CONSOLE

See and hear the incomparable PILOTS unparalleled sound in the very finest of furniture. Show above is LUCERNE Model 7054. French Provincial style, genuine American Cherry. Distressed Fourwood finish. \$895.00

McCallum & Dean

Serving the Birmingham-Bloomfield Areas for 19 Years!
RADIO-TELEVISION-HIGH FIDELITY COMPONENTS
409-11 East Maple (Bet. Woodward and Hunter Blvd.)
• MI 4-5230 •
Open Evenings 'Til Christmas

Southfield Resident Endows Scholarship

John E. Lurie, 21128 Rutland, the local leaders who are spearheading efforts for the Dec. 22 dinner at Shaarey Zedek which will honor Louis Berry of Detroit. Lurie serves on the Seminary's Board of Overseers and is among the local leaders who are spearheading efforts for the Dec. 22 dinner at Shaarey Zedek which will honor Louis Berry of Detroit. Lurie serves on the Seminary's Board of Overseers and is among the local leaders who are spearheading efforts for the Dec. 22 dinner at Shaarey Zedek which will honor Louis Berry of Detroit. Lurie serves on the Seminary's Board of Overseers and is among the local leaders who are spearheading efforts for the Dec. 22 dinner at Shaarey Zedek which will honor Louis Berry of Detroit.



BR-R-R-IT'S COLD outside, but it's oh so warm and comfortable inside. And you're welcome to come in—whether it be a respite from your busy Christmas shopping, a family get-together or a Christmas party, all four Greenfield's Restaurants say Welcome—every day—in every way. Treat yourself during this frigid weather to an individual pot of rich, full-flavored coffee... the perfect compliment to Greenfield's fine and varied foods.

GREENFIELD'S HAS 4 LOCATIONS FOR YOUR EATING PLEASURE AND CONVENIENCE:

- 708 N. Hunter Blvd. BIRMINGHAM
- 2981 Woodward DETROIT
- 1130 Griswold St. DETROIT
- Greenfield Road 3/4 miles from NORTHEAST

GIFT GUIDE

from... OPEN EVERY EVENING

MILLS PHARMACY

WE DELIVER

Always A Place To Park—at Mills Pharmacy!

DeVILBISS & STEP
PERFUME
ATOMIZERS

Check our new, low prices on
ELECTRIC RAZORS for men and women
• NORELCO • SCHICK
• REMINGTON • SHAVEX

SHEAFFER'S LIFETIME PENS
BALLPOINTS and DESK SETS

large selection of
MATSON MIRRORS, TRAYS
and TISSUE BOXES

New BULOVA CARAVELLE WATCHES
for men and women, from \$10.95

HALLMARK CARDS
and
NOTE PAPER

Sanders Candy, of course!
also WHITMAN'S and GILBERT'S Boxed Candies

There's just one word for your Christmas gift—Buxton!

BUXTON WALLETS for men and women
... Also a new size for boys and girls, by Amity

GIFTS FOR 'HER'

Gifts to make her even lovelier strike a responsive chord in the heart of every lovely lady... especially if they come from Mills!

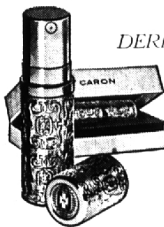
LARGEST SELECTION of IMPORTED PERFUMES WEST OF THE RIVER ROUGE! Select a gift eternally feminine... fragrantly remindful!

DANA'S "Ambush," "Tabu," "Platine," etc. NEW! REVLON'S Intimate Perfume Oil, \$3.50 & \$5.00.

COTY'S new spray (measured mist) all fragrances "Laimont," "Emeraude," etc.

GUERLAIN'S new "natural" sprays, new Chant d'aromes, perfumes, lotions and dusting powders.

CHRISTIAN DIOR'S "miss Dior" Diorissimo and new "Diorling" perfumes, toilet waters, and bath powders.



CARON'S DERRINGER SPRAY PERFUME

from the House of Caron, designed in Paris... the ultimate in elegance.

DERRINGER METERED SPRAY PERFUME

- Fleurs De Rocaille (Rock Garden Flowers) perfume 5.00 refill 2.50
- Beldoglia perfume 5.00 refill 2.50
- Nuit De Noel (Christmas Night) perfume 6.00 refill 3.00

ARPEGE by LANVIN

Parfums Arpege in the square bottle with the signet stopper.

- 1/2 oz. 7.50 1/2 oz. 15.00 1 oz. 25.00
- Eau de Lanvin Arpege to drench you frequently from top to toe... in your favorite fragrance. 4 oz. 6.00 8 oz. 10.00



ALSO: complete lines of perfumes, bath powders, toilet waters, soaps, bath oils of MOST of all the "wanted" brands. A few more... Houbigants, Chantilly, Shai, Balenciaga (Le Dix and Quadrille), Bal-mains, Faberge (Tigriss, Woodhue, Aphrodesia).

GIFTS FOR 'HIM'

Visit our new, enlarged TOILETRIES DEPARTMENT FOR MEN featuring:

newest Fabergé masterpiece... after shave... after shower... after anything!

BRUT for men \$5.00 - \$8.50 - \$20.00

Dana CANOE
• COLOGNE \$5, \$8.50 • SOAP \$2 • TALC \$2.50

CHANEL AFTER-SHAVE LOTION \$5.

MONSIEUR LANVIN

The beginning of a new International Habit. Men's toiletries come into their own with this inspired collection from the famous House of Lanvin:

- Figaro Cologne, 6.00, 3.75...
- After Shave, 5.00, 3.00... Soap, 2.00
- Vetiver Cologne, 6.00, 3.75... Soap, 2.00
- Lavande Cologne, 6.00, 3.75... Soap, 2.00



ALSO: COLOGNES, LOTIONS, SOAPS, DEODORANTS IN ALL the OTHER FAMOUS and WANTED FRAGRANCES, SUCH AS:
• ENGLISH LEATHER • FABERGE'S WOODHUE and APHRODESIA • WEST INDIES' BAY RUM and LIME COLOGNE • ROGER and GALLET'S JEAN MARIE FARINA • BALENCIAGA • GUERLAIN'S VETIVER • REVLON'S "THAT MAN" and "EAU de BALMAIN" • DORSAY'S • CHEVALIER "4711" • CARON'S "HOMME" • HOUBIGANTS "FOUGERE ROYAL" • YARDLEY'S NEW BLACK LABEL • SHULTON'S YORKTOWN, ETC., ETC., ETC.

"PERFECT" MALAGA PIPES \$8.50

"Seconds" 1.79 and 2.00 also Kaywoodie and Hilson's Meerschaum's

Men's Revlon
MANICURE IMPLEMENT SETS
\$1.75 - \$5.00 - \$9.95 - \$16.50

HAIR BRUSHES
by KENT, HOWARD
and PRO-PHYLACTIC

MILLS PHARMACY, WEST MAPLE at CHESTERFIELD

MI 4-5060