

# Prep Wrestlers Open 1964-65 Mat Schedule

High school wrestlers started action Friday as teams from Seaboard, Groves and Detroit Country Day opened the 1964-65 mat schedule. Groves, in its second year of competition in the sport, lost a 36-14 decision to Royal Oak. Henderson Jim Book and 151-pound Rick Kennedy each scored pins.

"We're not looking for team scores since this is our first year, but we'll have our letter awards on individual match points," Seaboard coach Sam Tazzio said.

"The enthusiasm is good — we have 50 boys out for the squad right now," he added.

SEABOARD AND GROVES will participate in the Christmas Tournament at Warren Fitzgerald Dec. 18 and 19 along with 15-20 other teams.

Detroit Country Day lost a 30-16 decision to Williamston last Thursday, mainly due to three boys who didn't make their weights and were disqualified.

Tom Gorsuch, 103; Brian Swain, 127; Al Saylor, 154; and Jeff Bisage, 165, each won on decisions. Charley Pullum scored a pin in the 135-pound class.

## Commonwealth Bank Names New Agency

Bank of the Commonwealth has retained Kenyon & Eckhardt, Inc., to handle its advertising program. It has been announced by George W. Miller, president.

The account will be serviced by Kenyon & Eckhardt's Detroit office which is headed by Robert A. Deard, executive vice president. Effective take over date will be Jan. 1, 1965.

# Deer Kill 3rd Highest In History

Michigan hunters scored their third highest take in the state's history during the 1964 firearm season with a kill of nearly 118,000 whitetails, according to Conservation Dept.

Results of the Dept.'s traffic counts, which will be cross-checked by a post-audit survey of licensed sportsmen, point to a harvest of 68,800 bucks and 48,750 antlerless deer.

Both figures are down from last season when hunters took home 124,000 deer, Michigan's second best kill on record.

THIS YEAR'S dip in kill is traced to the northern Lower Peninsula where hunters were "trained out" during the afternoon of their Nov. 15 opener and bogged down by a snow storm in the upper parts of the region on the second week end of the season.

Compared with a year ago, the region's harvest fell by about 8,500 animals, totaling 41,500 bucks and 35,000 antlerless deer.

In the Upper Peninsula, sportsmen fared about the same as last season, taking 19,550 bucks and 12,550 antlerless whitetails. Overall, they came within 400 animals of matching their 1963 success.

As expected, shotguns in the southern third of the state set another record for buck kill in their region, topping last year's figure of 6,800 by 1,000 animals. Added to this were 1,200 antlerless deer taken in 12 crop-damage areas of southern Michigan.

STATE-WIDE deer license sales were estimated at upwards of 518,000, slightly above last season's all-time high.

# Kristufek Named GM For New Tennis Club

Joe Kristufek, one of the Detroit area's best-known amateur tennis players, has been named general manager of the Bloomfield Tennis House, the new, four-court, indoor tennis club now under construction at a site halfway between Coolidge Road and Crooks Road, directly opposite Herz Airport in Troy.

A graduate of the University of Pittsburgh, where he was captain of the tennis team and played number one position, Kristufek was a versatile athlete and won membership in the Pitt Hall of Fame.

HE IS A native of McKeesport, Pa., where he reigned as city tennis champion and later coached the McKeesport High School tennis team.

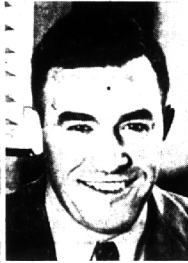
After serving as a lieutenant commander in the Navy in World War II, piloting a combat torpedo plane, Kristufek married and settled in Groves Pointe.

He has accumulated more than 200 trophies in both singles and doubles competition in Pennsylvania and the Detroit area and has won numerous mixed doubles titles with his wife, the former Frances Verhe, as his partner.

Either in college or while serving in the Navy.

## Elected VP

Warren J. Egely has been elected vice president-administrator for Meltrum and Fennsmith, Inc., Cleveland-based advertising agency with offices in Columbus, O. and Birmingham.



JOE KRISTUFEK  
Tennis Manager

ing with the Navy during World War II, he competed against many nationally-ranked tennis stars, including Ted Schroeder, Joe Hunt, Gardner Mulloy and Don McNeill.

THE BLOOMFIELD Tennis House is expected to be completed and ready for use by members Jan. 1, 1965. In addition to the four championship courts, it will contain shower rooms for ladies and gentlemen, a sauna bath, private lockers and a lounge room complete with television and children's play corner.

Mrs. Webster Baell of Birmingham is chairman of the membership committee.

## Joins Area Firm

Linn Smith Associates, Inc., architects, of Birmingham, have announced the addition to their staff of William J. Adams, registered architect, of Farmington, Adams will serve as head of the construction department administering and coordinating all construction operations.

Mr. Adams is a member of the American Institute of Architects.

# Census Bureau Gains Statistics On Farm Labor

Statistics about the nation's hired farm labor in 1964 will be provided by the December Current Population Survey to be conducted by the Bureau of the Census.

This area is one of the 357 selected areas in the United States where the survey will be taken the week of Dec. 13. It was announced today by Robert A. Yerkes, director of the Census Bureau regional office at Detroit.

The survey has been conducted regularly since 1945 by the bureau for the U. S. Department of Agriculture. Answers given in the survey help the government in determining farm labor needs and in studying the special economic and social problems of migratory workers and other farm employees.

LAST YEAR'S survey showed that 3.6 million men and women were employed as hired workers on the nation's farms at some time during 1963.

In addition to the questions asked annually on the number of days worked and cash wages earned, Census Bureau interviewers this December will seek information on why unemployed persons are looking for work (lost or quit last job, or other reason); how long unemployed persons who are not at work have been off the job; and the type of hired farm work done in 1964.

These questions will supplement the regular ones asked every month on employment and unemployment at the request of the Bureau of Labor Statistics, U. S. Department of Labor.

Census Bureau interviewers who will visit families in this area include Carol Barry of Southfield and Mary Heck of Franklin.

## James New Job

James D. Power III has joined the product planning staff of J. I. Case Co., L. H. Hodges, director-product planning and programing department administering and coordinating all construction operations.

Mr. Power is a member of the American Institute of Architects.

*A Christmas Message*

FROM  
**Huston Hardware**

Your **STANLEY** Tools  
RETAILER

You may already  
be a WINNER\*  
in the fabulous  
CHRISTMAS SHOPPING SPREESTAKES!

- 1 Look at the SPREESTAKES AD in your December 12th issue of the SATURDAY EVENING POST for your lucky number!
- 2 Bring your lucky number into our store for checking!

\*FIRST PRIZES:  
Expense Paid SHOPPING SPREE'S for 2 in London, Paris or Rome! And there are hundreds of additional Shopping Spree Prizes!

(... AND WHILE YOU'RE HERE, see how STANLEY TOOLS can help you win a happy answer to your Christmas Gift-Shopping problems!)

The Smart gift to give...and get!

INTERNATIONAL  
**TIME-ALL**

turns lights on and off...automatically!

- LIGHT GUARDS YOUR HOME
- MAKES MOST APPLIANCES FULLY AUTOMATIC

Time-All will not only protect the house and belongings when the family is away by realistically turning a light ON and OFF each evening, but also automatically starts electric coffee makers, turns a radio or stereo ON and OFF and has a host of other uses. Life's easier with TIME-ALL... that's why it's the smart gift to give—or get this Christmas.

Model A221-4 **\$8.95**

## Samsonite FOLDING FURNITURE

The Big Gift... with the little price tag

There is no more appreciated gift than Samsonite Folding Furniture. Tables have spacious tops covered with sturdy, scuff-resistant vinyl upholstery that wipes clean with a damp cloth. Legs glide open... close with a gentle touch. Chairs have contoured back rests and seats for extra comfort. Electrically welded tubular steel legs and cross braces are finished in chip-resistant baked enamel. Sets come in a wide range of decorator colors.

TABLES AS LOW AS **\$9.95** EACH

CHAIRS AS LOW AS **\$7.95** EACH

# HUSTON

HARDWARE COMPANY

"In The Heart of Birmingham Since 1909"

205 N. Woodward    Open Fri. Eve's.    MI 4-7300  
Free Delivery

## WE GOT SO BIG...

'CAUSE WE CHARGE SO LITTLE

rent a car from **ECONO-CAR**

from **\$3.99** per business day

Including gas & insurance—even seat belts! Pick-up or delivery available. Courteous service. New Chrysler-built cars are featured exclusively!

1516 S. Woodward  
Just North of 19 Mile Road  
Phone 542-1464  
24 Hour Telephone Service

## Never Any Waiting

at

### Bob Little's Colonial Barber Shop

3 Barbers To Serve You

We Will Be Closed On  
Saturday, Dec. 26 and Saturday, Jan. 2

OPEN DAILY 'TIL 6 P.M.

- Shoe Shine
- Manicurist
- Personalized Service

Park Right In Front... or Free Across The Street

### Little's Colonial Barber Shop

(2 Blocks North of Demery's)  
526 N. Woodward    MI 4-9645

### GOP Candidate

Phillip J. Rouce, 1936 Yosemite, Birmingham, has announced his candidacy for chairman of the Oakland County Young Republicans. The annual election of officers will be held at The Birmingham Community House at 8 P.M. on Dec. 15. Rouce, a Birmingham resident for three years, is a sales representative for the Republic Steel Corporation.

# WHOLE FRESH FRYERS

## 29<sup>c</sup>

lb.

FRESH DRESSED MICH. TURKEYS

Reserve Yours Now For The Christmas Holidays!

FRESH BEEF TONGUE ..... 39c lb.

WHOLE COOKED TURKEY, \$7.99 ea.

CUT-UP FRYERS 33c lb.

DAIRY SPECIALS

**PARKAY**

4 1-lb. Ctns. **99c**

Borden's **HALF & HALF** Qts. **39c**

Borden's **CHOCOLATE MILK** Qts. **19c**

Borden's **CHIP N' DIP** 8-Oz. Ctn. **3 for \$1**

Borden's **EGG NOG** Qt. **59c**

Swift's Premium **SLICED BACON** lb. **49c**

★ **JELLO** ★

Buy 6 Regular Pkgs. Get One Strawberry Free! **59c**

**Beech-Nut Coffee**

**NEW** easy open No-Key Can 1-lb. Can **69c**

Premier **MAYONNAISE** Qt. **59c**

Stokley's **PUMPKIN** NO. 2 1/2 Can **19c**

Star Cross 46-oz. Can **TOMATO JUICE** **29c**

Prices Effective Thurs., Fri., Sat., Dec. 10, 11, 12.

180 WEST MAPLE AT HENRITTA

## A WORLD OF GIFTS

"COMFY" 3-LB. DACRON "88"

### Sleeping Bag

DOUBLE AIR MATTRESS POCKET WARM FLANNEL LINING BUILT-IN WEATHER STRIP FULL DOUBLE-UP ZIPPER WATER REPELLENT POPLIN COVER APPROX. FINISHED SIZE 34x78 CAN BE DRY CLEANED TEMPERATURE TESTED

**\$17.95**

OTHER BAGS FROM **\$10.95** up

UMBRELLA TENTS — JUNIOR SIZE by HETTRICK

SIZE 5'9" x 5'9" — COMPLETE **\$8.99**

SIZE 7' x 7' — COMPLETE **\$10.99**

OTHER TENTS IN STOCK AT REDUCED PRICES

"LITE PACK" PUP TENT

STORM DOOR FLAPS NYLON SCREEN DOOR-SNAPS SEW-IN FLOOR SIZE 5x7 CANVAS WEIGHT ..... 6.73 Oz.

**\$14.88**

COLEMAN LANTERN SINGLE MANTLE **\$8.99**

### DOUBLE DECKER COTS

**SPECIAL \$19.99**

This Double Decker Cot can also be used as two single cots and when folded as shown requires little storage space. Can be quickly set up or quickly disassembled.

Size 37"x74"x13" high  
• Fabric — Duck  
• Color — Olive Green  
• Aluminum Frame

## THE SURPLUS SHACK

2923 N. WOODWARD (Between 13th and 13-1/2 Mile)

LI 9-9803    Open Every Night Until Christmas

WE GIVE **2x4x4** GREEN STAMPS

OPEN SUNDAYS — 10 A.M. to 4 P.M.