



Guiding Them to Journalism

Julie Candler (right) Birmingham writer and president of the Detroit chapter of Theta Sigma Phi, national professional women's journalism fraternity, distributed fraternity literature to Emily Green (left) and Judy Bruce at the 27th annual Community Careers Conference for Detroit Public High School Youth recently in Detroit. Mrs. Candler served as a community consultant on a journalism panel during the conference which was sponsored by Wayne State University and the Detroit Board of Education. More than 1,000 high school seniors participated. (Emily attends Redford High School; Judy, Finney High School). Mrs. Candler lives at 1288 Dorchester, Birmingham.

Area Residents to Sing In Rackham Concert

More than 200 metropolitan Detroit men and women have been rehearsing since April in preparation for a concert performance of Handel's "Messiah," to be given at 8 p.m. Sunday in the Masonic Temple Auditorium, Detroit. They are members of the Rackham Symphony Choir, official choral group of the Detroit Symphony Orchestra. For this appearance, the choir will sing with The University of Michigan Symphony Orchestra.

Residents who sing in the choir include Elsie J. Hoppa, 5336 W. Briarcliff, K'noll, Birmingham; Ethel L. Lewis, 16280 Kinross, Birmingham; Barbara C. Maffo, 1961 Grandfield Road, Birmingham.

M. Jan Walters, 1140 Hillside Drive, Birmingham; and Philip G. Whelan, 773 Hawthorne Court, Bloomfield Hills.

MEMBERSHIP in the Rackham Choir is offered as a course by the University Center for Adult Education, sponsored by Wayne State and Eastern Michigan Universities and the University of Michigan.

Last March the choir presented a program titled "Three Centuries of Great Religious Music" before a capacity crowd at Ford Auditorium.

Prof. Maynard Klein, director of choirs at the University of Michigan and Camp Interlochen, organized the choir in 1949. It has gained national recognition through its performance of major choral works under a variety of symphony conductors.

Tickets may be obtained at the door or in advance at the University Center Office, Rackham Educational Memorial, Woodward downtown Detroit.

Calendar of Cultural Events

Thurs., Dec. 10
B R I D G E — Birmingham Duplicate Bridge Club at 7:45 p.m. at Birmingham YMCA.
LITTLE GALLERY — Drawings, etchings, lithographs by Kaethe Kollitz and her contemporaries at 915 E. Maple, Birmingham. Hours 9 a.m.-6 p.m. Tues.-Sat. thru Dec. 21.
THE RAVEN — Folk singers Mike and Judy Callahan at The Raven Gallery, Birmingham, at 9:30 p.m. Tues.-Sun. thru Dec. 13. Hootenanny Sundays. Admission charge.
JACOBSON'S FINE ARTS — Animal paintings, drawings by Birmingham resident Carolyn Hall thru Dec. 19. Hours 9:30 a.m.-5:30 p.m. Mon.-Sat.; also, until 9 p.m. Thurs.-Fri. At gallery in Home Decorative Shops, Birmingham.
BLOOMFIELD ART ASSOCIATION — Members' Show and Christmas Market. Hours 2-5 p.m. Tues.-Sun. Market thru Dec. 24, exhibit thru Dec. 27.
UNIVERSITY ART GALLERY — Holiday season exhibition of graphic arts thru Dec. 16. Hours 12:30-4:30 p.m. Mon.-Fri. and 2-5:30 p.m. Sat. At Oakland University, Rochester.

Thurs., Dec. 17
B R I D G E — Birmingham Duplicate Bridge Club at 7:45 p.m. at Birmingham YMCA.

Thurs., Dec. 18
B R I D G E — Birmingham Duplicate Bridge Club at 7:45 p.m. at Birmingham YMCA.

Thurs., Dec. 24
B R I D G E — Birmingham Duplicate Bridge Club at 7:45 p.m. at Birmingham YMCA.

Thurs., Dec. 25
B R I D G E — Birmingham Duplicate Bridge Club at 7:45 p.m. at Birmingham YMCA.

Thurs., Dec. 31
B R I D G E — Birmingham Duplicate Bridge Club at 7:45 p.m. at Birmingham YMCA.

Sun., Dec. 13
MESSIAH — Oakland University Chorus and Pontiac Symphony Orchestra in third program of OU-Community Arts Council Concert Series at 7:30 p.m. at Oakland University Intramural Bldg., Rochester. Admission charge.
CHRIST CHURCH CANTORIAN — "The Christmas Story," pre-Bach oratorio, at 5 p.m. at the church in Bloomfield Hills.

Mon., Dec. 14
B R I D G E — Community House Duplicate Bridge Club at 7:45 p.m. at 380 S. Bates, Birmingham.
BIRMINGHAM - BLOOMFIELD POETRY CLUB — Meets at 8:30 p.m. at The Community House, Birmingham.

Tues., Dec. 15
B R I D G E — Birmingham Duplicate Bridge Club at 7:45 p.m. at 380 S. Bates, Birmingham.
B R I D G E — Birmingham Duplicate Bridge Club at 7:45 p.m. at Birmingham YMCA.

Wed., Dec. 16
B R I D G E — Birmingham Duplicate Bridge Club at 7:45 p.m. at Birmingham YMCA.

Thurs., Dec. 17
B R I D G E — Birmingham Duplicate Bridge Club at 7:45 p.m. at Birmingham YMCA.

Sat., Dec. 19
CRANBROOK GALLERIES — "The Spirit of New Berlin in Painting and Sculpture," exhibition by 14 artists, thru Jan. 10 at Academy of Art Galleries, Bloomfield Hills. Also "Tamarind Blossoms," thru Jan. 3, and "Faculty Choices," Cranbrook students' work, thru the holidays. Hours 2-5 p.m. Tues.-Fri. and 1-5 p.m. Sat.-Sun. except major holidays. Admission charge.

BIRMINGHAM LUMBER CO.

Gifts that bring joy to the whole family

Here are thoughtful and unusual gifts the whole family will enjoy

WORK BENCHES

5-Foot 2" Top
 A-1 Quality **\$16.95** K.D.

Includes: Peg board, tool rack and drawer.
EASY TO ASSEMBLE

BASKETBALL BACKBOARD SET

\$9.95 Set
 Includes Rim, Net and Backboard

COME IN AND CHECK OUR MANY OTHER GIFT VALUES.

ALL PURPOSE TABLES

FULL 5' x 9' SIZE

PING PONG

IDEAL FOR MANY USES

K.D. UNFINISHED Plywood Base	K.D. UNFINISHED Metal Folding Legs	Assembled and Finished Folding Legs
FROM \$14.90	FROM \$22.90	FROM \$29.95
1/2" TOP	1/2" TOP	3/4" TOP

OTHER COMBINATIONS AVAILABLE
 CHECK WITH BIRMINGHAM LUMBER FIRST

BIRMINGHAM LUMBER & SUPPLY CO.
 1025 HAYNES STR. MI 4-3636

Between Adams & Hunter—5 Blocks South of Maple (East of Greenfield's)
 Hours: Mon. Thru Fri. 7:30 to 5:30 P.M.—Sat. 7:30 to 4 P.M.



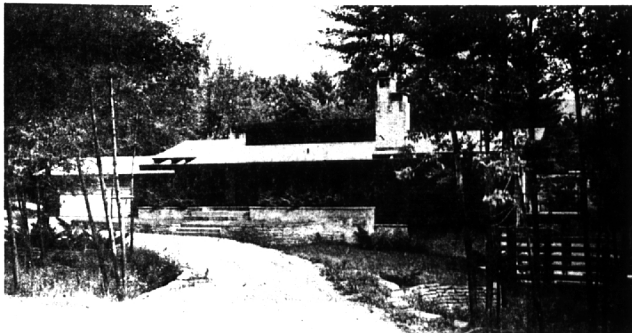
IT'S HANDSOME! IT'S A BUY! IT'S ONE BLOCK to Quarton school! Three bedrooms, Dining room, Recreation room with bar. Screened porch. **\$30,500.**



EIGHT BEDROOMS AND IN BLOOMFIELD VILLAGE! Terrific room arrangement provides privacy for large family with "grandma and grandpa" or maid's quarters. Five bathrooms and two lavs. Separate dining room, walnut paneled library. Walk to St. Regis school and Maple bus. **\$44,500.**



NOW IS THE TIME TO GET a terrific value. This three bedroom is **VACANT** and it's near **QUARTON** school. Dining room, paneled library and porch that is glassed and screened. Completely air-conditioned. All carpeting and draperies included. **\$32,500.**



YOU HAVE TO SEE IT—PICTURE DOESN'T DO IT JUSTICE — WORDS DON'T MEAN ENOUGH! Near the Kirk on hill rising from lakeshore. Four bedrooms and three bathrooms. 26 foot family room with second fireplace and bar with sink. Great kitchen with built-ins. Completely air-conditioned. Many, many extras.



FABULOUS HOME IN BLOOMFIELD VILLAGE WITH EVERYTHING! No expenses have been spared to make this one of the "best." Five bedrooms (three on first floor) with most beautiful master suite. Extra large dining room. 28' family room with beamed ceiling. Pantry room off utility room. Recreation room with extra kitchen. Air-conditioned. Hi-Fi throughout. Inter-Com system. Lawn sprinkling system. A joy to show—Call for an appointment.

Weir, Manuel, Snyder & Ranke, Inc.

298 South Woodward
 Birmingham, Michigan Realtors

Birmingham 644-6300
 Phones: From Detroit 566-2323