

BRIDGE

in BIRMINGHAM

By BUD MAYBAUM
Southern Michigan
Bridge Association

Two very pleasant bridge players who are regulars in Birmingham tournaments are Ann Haskins and Stan Kauwafian, and don't let their agreeable ways lull you into false security. Both of them play an excellent game of bridge.

My hand for today was played by this pair and, as usual, they received a top board. The actual play of the hand was simple but few arrived at the proper contract. Dealer: West; Top Vulnerable.

(Stan Kauwafian) NORTH
♠ 9 8 7 4
♥ A K 9 8 7 3
♦ void
♣ A

WEST (Dealer) EAST
♠ 4 3 ♠ Q 10 8
♥ 6 3 2 ♥ K J 10 5
♦ J 2 10 5 4 1
♣ A Q J 9 3 2 ♠ 8 7 4

SOUTH (Ann Haskins)
♠ A K J 7 2
♥ A Q 6
♦ K 10 6 5
♣ Q

The bidding:
WEST NORTH EAST SOUTH
3 ♠ 3 ♠
pass ♠ pass 4 NT
pass 6 ♠ pass 7 ♠
all pass

Opening lead: A ♠
The hands were prepared and Stan felt that this must be the hand to make all the points on. There were a variety of contracts from a nongame contract in either spades or diamonds to a small slam in spades, diamonds or no trump.
Ann knew that the blank suit of North must be clubs when Stan answered the four no-trump with a six bid instead of a five bid. She also knew that the diamonds must be solid, especially with her assistance of the queen of diamonds. However, she did expect to find the queen of spades third in dummy.

ANN RUFFED the opening lead of the ace of clubs and did take the spade hook to make the contract. When Ann noticed that West was sad as West believed he made the contract possible with this ace-of-club lead, Ann was quick to let him know the contract could be made with any lead.
In the recent national charity game held at the Community House, Birmingham, the winners were George Alderton and Dick Berker, Fred Canaday and Jean Carpenter, Bob Murphy and Terry O'Hearn, Dot and Charles Thurn-

Deck the Tree, Ethnically

Mrs. Beate Lisa Harter, 18650 Locherbie, Birmingham, will represent Germany, an individual from 12 ethnic groups decorate Christmas trees at the Detroit Historical Museum.
These displays are expected to be on view by Dec. 18. Also decorating a tree, from the Birmingham-Bloomfield area, is Mrs. Joshi Shimoura, 31753 Mulberry Drive, Southfield.

NINE nationality groups will be featured with interpretive Christmas exhibits in a non-tree category. Both exhibitions will remain in the museum through Jan. 10.

Holiday customs in Mrs. Harter's Germany include the Advent wreath, made of fir branches, red ribbons and four candles, which appears in every household. The custom of the Christmas tree originated in the Black Forest and spread to the New World through German immigrants and to England where Prince Albert introduced it after his marriage to Queen Victoria in 1840.

In Mrs. Shimoura's Japan the most important seasonal festivities revolve around a three-day New Year celebration. Ceremonial calls are paid by the men of the family and children play traditional games. Symbolic decorations feature branches of pine, plum blossom and bamboo.

Instructor Leads Ski Trip of World

Rex Ciavola will conduct a group of skiers on a combined holiday and ski trip around the world on Feb. 19, 1965.

The skiers will visit Hawaii and the Soviet Union and ski in such varied locals as Squaw Valley in the High Sierras of California, the mountains of Japan, the Carpathians in Romania and Kitzbuehel in the Austrian Alps.

Ciavola is a ski instructor and has conducted orientation clinics for the J. L. Hudson Co., and the Grosse Pointe and Birmingham Michigan Ski Clubs, as well as for other ski centers in the Detroit area.

If you are a discriminating shopper, you'll find it pays to read the classified pages of The Eccentric . . . today and every week. Read and advertise in the Classified pages. Call MI 4-1100.

Berlin Artists Set Spirit of C'brook Show

An exhibition by 14 Berlin artists, titled "The Spirit of New Berlin in Painting and Sculpture," will open in Cranbrook Academy of Art Galleries on Dec. 19 and remain up through Jan. 10.
The exhibition is sponsored by the City of Berlin, selected by the German Arts Council and is traveling throughout the United States under the auspices of the American Federation of Arts.

The five senior artists in the exhibition, painters Hans Jaenisch, Fred Thieser and Hann Trier and sculptors Karl Hartung and Bernhard Heiliger, all have world-wide reputations. The younger artists, many of whom have already exhibited widely abroad, include painters Bachmann, Bartel, Bergmann, Huth and Stohrer and sculptors Baumann, Droste, Szymanski and Ursula Sax.

ONLY KIKKI Bartel and Manfred Bluth were actually born in Berlin. The other artists come from all over Germany, both East and West, attracted to Berlin as an art center.
The Tamarind Bon a Tier Lithographs' exhibition, originally scheduled to come down Sunday, will remain on view through Jan. 3.

An exhibition of works by students of Cranbrook Academy of Art, called "Faculty Choices," will round out the galleries' presentations for over the holidays.
The galleries in Bloomfield Hills are open from 2 to 5 p.m. Tuesdays through Fridays and from 1 to 5 p.m. Saturdays and Sundays except major holidays. There is an admission charge.

ACROSS

- Man's name; post.
- Fishhook line
- Metal tag
- Antoinette
- American vulture
- Take dinner
- Turkish title
- Widow
- Measure of length
- Rock
- Half an em
- Boy's name
- Eskimo tool
- Forearm bone
- Guided
- Shop
- Samarium: sym.
- Lowest point
- Red
- Explorer
- Fluff from cloth
- Dregs
- Network
- Furnished temporarily
- Cry of a cat
- Perform
- Eskimo
- Mass
- Fuss
- Obstacle
- Organ of sight
- Mid-day
- Offen: poet.
- Morsels
- Former
- Argentine leader
- Claws
- A church service: R. C. Ch.
- Mine entrance
- Festive
- Factor
- Poker stakes
- Traffic sign
- Fernut
- South Dakota: abbr.

Answers to Puzzle Will Be Found on Page 7-D

1	2	3	4	5	6	7	8	9	10
11									
13									
15									
17									
19									
21									
23									
25									
27									
29									
31									
33									
35									
37									
39									
41									
43									
45									
47									
49									
51									
53									
55									
57									
59									
61									
63									
65									
67									
69									

DOWN

- So. Am. nodent
- Zagor

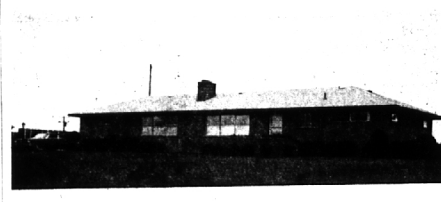
THE KEATING COLUMN



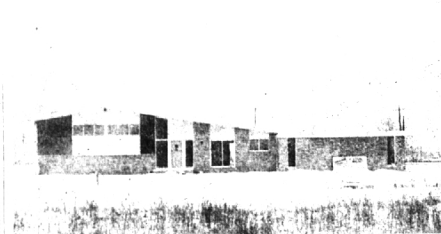
TOMORROW MAY BE TOO LATE . . .
For you to see this lovely 3 bedroom Colonial. Located in one of Birmingham's prime areas, it is within walking distance of schools and priced at a very surprising \$32,000.00



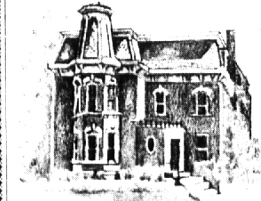
READY FOR YOU NOW!!!
You can walk to shopping and transportation from this wife-saver home and it is ready for immediate occupancy. Near Oakland Hills Country Club on a quiet court, it is less than 5 years old and in superb condition. 3 extra sized bedrooms, 2 1/2 baths, efficient kitchen with the built-ins and extra large breakfast room. The rocking chair family room has a brick Bar-B-Q for those fun times. \$35,000.00



BIG FAMILY RANCH
4 bedrooms—huge 22 x 14 family room with fireplace plus a finished 25 x 40 basement. There is also a glass-enclosed porch, AM-FM intercom, air conditioner and all kitchen built-ins. Only \$39,500.00. Bring the family and inspect this one at your leisure either Sat. or Sun. between 1-5. 5272 Doherty—north of Maple and between Middlebelt and Orchard Lake Road.



REFRESHING DEPARTURE . . .
From the ordinary is this 4 bedroom, 3 1/2 bath contemporary, planned with today's fast paced living in mind. Latest building knowhow, building materials and equipment. ULTRA-ULTRA . . . \$42,900.00



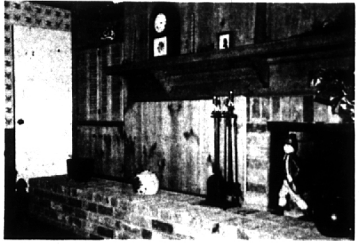
We Can Sell Yours, Too!

KEATING OF BIRMINGHAM
325 SOUTH WOODWARD AVENUE
BIRMINGHAM, MICHIGAN, JO. 6-5121 MI. 6-1254

WHERE "The Night Before Christmas" is all through the house



The beautiful spacious rooms are enhanced by an overall pattern of Eagle wallpaper with a reverse design on the look through room.



Brass and glass hanging lamps in family room and kitchen



A sure sign of Americana are the built-in cupboards with wrought iron strap hinges and the eagles on the electric switch plates



Dramatic raised hearth fireplace with colonial andirons and tools and a beautiful antique clock on the long mantel.



All on one floor, on a beautiful lot in the Bloomfield Hills. There is so much here to interest a home buyer who enjoys early American decor.



FRED PIERCE INC.
460 NORTH WOODWARD, BIRMINGHAM, MICH.
Midwest 7-1414