



NANCY RAE (CENTER) WITH EDWARD AND LINNEA MEILLER

Swedish Tradition Observed Locally

The Swedish Christmas (Jul) begins on Dec. 13 and is known as Lucia Day. Early in the morning on this date, at first cock-crow, households throughout the land are awakened by a "Lucia." She is usually the eldest daughter of the family, dressed in traditional white robe with crimson sash, and wearing a crown with lighted candles. It is customary for her to carry a tray with coffee and special saffron buns to each one in the family as she serenades him with the old Sicilian melody, "Santa Lucia."

This custom began long ago. According to legend, Lucia was a medieval saint who carried food to hungry folk in the province of Varnland during a period of famine. Because she was seen crossing Lake Vanern clothed in white and with a crown of light encircling her head, the modern Lucias dress in white and wear crowns with lighted candles, or lavande ljus, (living candles), as they are called in Sweden.

THIS FESTIVAL has been celebrated in many provinces since the Middle Ages, and its traditions have for centuries been passed from one generation to another. The Lucia legend is said to have originated in Syracuse, on the island of Sicily.

There, the first Lucia, a young girl about to be a bride, gave her entire dowry to the poor people of her village and admitted that she had become a Christian. Accused of witchcraft, she was taken prisoner and burned at the stake, Dec. 13, 304 A.D.

Later, she was canonized by the early church and thus received the name by which she is now known, Santa Lucia. She is sometimes pictured by Italian artists as a blind girl holding a lamp. There are many legends, but in each one, Lucia becomes the symbol of light and hope to mankind. She comes on the darkest day of the year to herald the glad Christmas time.

MANY OLD BELIEFS exist in connection with the day which, according to the Old Style Roman Calendar, was the shortest day of the year. It marked the solstice, the date upon which the sun apparently stands still in its motion from the equator. This was recognized as the turning point toward spring. All the work of harvesting, spinning, weaving, baking and brewing must be finished and the whole house thoroughly cleaned and put in order for the Christmas holidays so soon to follow.

If these preparations are made, happiness and prosperity will follow throughout the year. During all these activities, Lucia is the central figure.

Christmas Cards
THE BEST SELECTION IN TOWN!

LOWER LEVEL
La Belles

One Hundred Thirty-Seven West Maple, Birmingham 644-3030

Son Is Born

Mr. and Mrs. William Mulliken (Jill Neherot of Birmingham) of Evanston, Ill., announce the birth of a son, David Forrest, on Dec. 4.

Have You Met

Mr. and Mrs. Max Keenan of 4933 Malibu Rd., Bloomfield Hills? They are new residents as of Sept. 18 from Texas by way of Grosse Pointe. Mr. Keenan is general sales manager of the N. E. region, Fruehauf Div., Fruehauf, Corp. The Keenans have a son, Pete, a sophomore at Wabash College and a married daughter, Maxine, living in Dallas. Mr. Keenan's affiliations are Harvard Business School Club of Detroit,

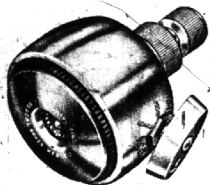
Have You Met

New residents of 1921 S. Waltham Rd., Beverly Hills, Mr. and Mrs. James R. Tamkian, former Highland Park residents? The family which includes Adreana, 12; Sonia, 9, and Armen, 8, moved here Aug. 28. Mr. Tamkian is a food broker, manufacturer's representative. They are members of St. Sarkis Church and enjoy listening to good music. Activities are past president of Armenian Veteran Post 307, American Legion Auxiliary; treasurer of Armenian Civic Center and past commander of American Legion.

and Lambda Chi Alpha fraternity. The family attends the Presbyterian Church. Hobbies are fishing and golf.

KILGORE and HURD . . . BOOK TOWER

An Original Gift Idea from "Her to Him" or "Him to Her"



CHROME-AND-GOLD "DIAL YOUR SHOWER"

The "Country Club" Shower head, world's finest, in gleaming chrome over copper and nickel base, enhanced by the beautiful 24-carat gold face plate. Provides full volume dual spray. No stray streams. No hollow area. Fully adjustable with the "Dial Your Shower" selector. Completely self-cleaning. Easy to install—just screw it on.

Gift Wrapped, Complete 16.95

OTHER DISTINCTIVE GIFTS:

OXFORD CLOTHES and BOULEVARD CLOTHES
NECKWEAR from A. SULKUA and COUNTESS MARA
JACKETS - SLACKS - ROBES - HOSEY
TROY GUILD and HATHAWAY SHIRTS
KEVIN McANDREW HAT GIFT CERTIFICATES
FRANK BROS. SHOES and SLIPPERS
AND SEVERAL VERY UNIQUE GIFT ARTICLES
Gift Certificates Issued in Any Amount
COME IN OR CALL WO 2-5191

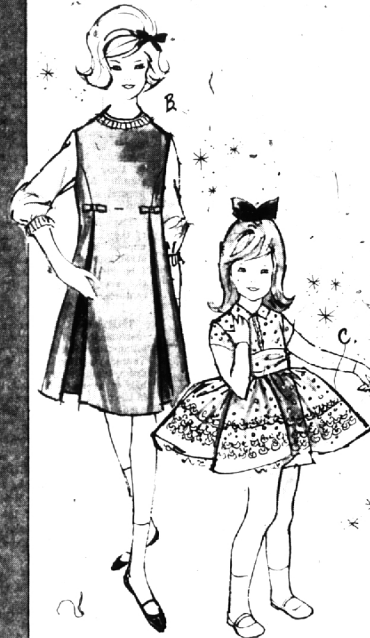
Gentlemen's Outfitters
KILGORE and HURD
WASHINGTON BLVD. BOOK TOWER

Free Parking Just West of Building—Let us Stamp Your Ticket

This is The Way We Like to Look

In pert, pretty little dresses that go to holiday parties. A . . . Blouson silhouette with slightly flared skirt. Simulated pearl button trim, white cotton collars and cuffs. Detachable bow at neck. Black only.

Sizes 3 to 6x . . . \$13. Sizes 7 to 12 . . . \$15.



B . . . A-Line jumper with inverted pleats in skirt. Contrasting crepe blouse with self ruching. Raspberry velvet jumper with pink arnel blouse.

Sizes 4 to 6x . . . \$14. Sizes 7 to 12 . . . \$17.

C . . . Silk Organza party dress by Ruth of Carolina. Bouffant skirt with separate nylon net petticoat. Schiffl embroidery on skirt. Pink with white.

Sizes 3 to 6x . . . \$20. Sizes 7 to 12 . . . \$23.

Children's Dept. . . . all stores

B. Siegel

WOODWARD AT CENTER GALLERIA CENTER BIRMINGHAM STABLES HILTON HOTEL

THE NEW juliet bloomfield commons grand opening!

A BEAUTIFUL, NEW JULIET SUBURBAN AT YOUR DOOR . . . MAPLE AND LAHSER ROADS!

JULIET HAS THE MOST GLAMOROUS SLEEP AND LOUNGE WEAR YOU HAVE EVER SEEN . . . IDEAL FOR YOU AND ANY OTHER FEMME FATALE ON YOUR GIFT LIST!



AND HERE IS A GRAND OPENING SPECIAL!

FAMOUS MAKER JUNIOR SWEATERS

ALL WITH LABELS YOU'LL RECOGNIZE IMMEDIATELY!

EXACTLY

1/3 OFF

WERE: \$8 TO \$18

(Just one of many great values during our grand opening celebration.)

THIS BOUDOIR SET IS SO DELICATE AND FEMINE . . .

Sheer, opaque and fragile looking, created of ever lovely nylon tulle to assure loads of wear! The gossamer robe is pampered with frilly self ruching . . . this to shelter a vaporous shift gown of opaque nylon with a sheer overlay

Bali blue, black or flame. Small, med., large. \$13 A SET

OUR CUDDLY, SOFT, HOSTESS ROBE

A long flow of warmth in vividly tinted Winkler's Winama fleece, blended of Arnel and Nylon. In garnet, turquoise or flamingo. Edged in French satin. Belt 2 ways or wear without belt. 10 to 20. \$15

GOTHAM'S LOVELY GOWN AND PEIGNOIR SET . . .

Double layers of gossamer nylon tricot overlay drift into a gently flaring peignoir, frosted with nylon lace. The shift gown has a veil over opaque nylon tricot. Sizes small and medium. GOWN \$9 PEIGNOIR \$15

JULIET BLOOMFIELD COMMONS IS OPEN DAILY 9:30 A.M. TO 9 P.M. CLOSED SUNDAY. JULIET GREEN - 8 (GREENFIELD/8 MILE RD.) IS OPEN EVERY SUNDAY 12 NOON TO 5 P.M.