

CONNOLLY'S CHRISTMAS DIAMOND SHOW

TWO COMPLETE DIAMOND JEWELRY MANUFACTURERS' LINES ON DISPLAY FOR THREE DAYS STARTING MONDAY, DEC. 7th AND THROUGH WEDNESDAY, DEC. 9th.

OPEN MEN'S NIGHT, MONDAY, DEC. 7th UNTIL 10 P.M.

The two complete diamond displays will feature diamond dinner and engagement rings, men's diamond rings and tie tacks: Ladies' diamond pendants and diamond earrings. In addition to this, we have searched the market for exceptional values in larger pieces from estates, such as diamond brooches, necklaces, bracelets and unusual finger rings set with emeralds, sapphires, rubies. In all it will be an outstanding display of diamonds seldom if ever seen in this area!

OVER HALF A MILLION (\$500,000) OF DIAMONDS ON DISPLAY FOR YOUR PLEASURE AND AT SPECIAL PRICES, TOO!

Every diamond item in our stock and in the special displays have been reduced for this event.

SAVE AT LEAST 20% NOW FOR CHRISTMAS

Everyone is invited to see this collection. There is no obligation and you won't forget it for years.

Platinum Bracelet
150 round - 3 marquise and 9 baguette diamonds
Value \$9,975
Sale Price
\$7450



Platinum Bracelet
15 Emerald-cut diamonds and 60 Baguette cut, a total of 16.83 carats. Reg. value \$17,500.
Special Sale **\$11,000**

BRACELET not shown here. Platinum, 34 round graduated diamonds.
Reg. \$11,250 **SPECIAL SALE \$8,500**

51 Perfectly matched emerald cut Diamonds in platinum bracelet.
Reg. value \$13,500. **SALE PRICE \$9,950**

PLATINUM BRACELET
Containing 169 round and Baguette diamonds.
Reg. \$2750. **SALE PRICE \$1,980**

SEVERAL OTHERS PRICED FROM \$500.00 to \$2,000.00

LOOSE DIAMONDS FOR YOUR VIEWING PLEASURE AT EXCEPTIONAL VALUES.

You save at least 25% on every diamond listed. Come in and let us show you.

401/100 carats, Round and Brilliant	\$5500
350/100 " " "	4950
310/100 " " "	4250
281/100 " " "	3300
272/100 " " "	2975
230/100 " " "	2750
197/100 " " "	4400
194/100 " " "	3300
189/100 " " "	3850
186/100 " " "	1650
176/100 " " "	2750
148/100 " " "	1475
144/100 " " "	1975
138/100 " " "	1650
133/100 " " "	1250
129/100 " " "	2000
125/100 " " "	1650
110/100 " " "	1250

1.26 carat marquise in 14 k w.g. solitaire mounting	1320.00
1.02 carat marquise 14 k w.g. mounting with tapered baguette	990.00
1.32 cts pear shape 14 k w.g. mounting with tapered baguette	1100.00
1.11 cts pear shape 14 k w.g. mounting with tapered baguette	795.00
1.05 cts pear shape 14 k w.g. mounting with tapered baguette	850.00
1.18 cts round brilliant 14 k w.g. mounting with tapered baguette	990.00
2.88 cts emerald cut 14 k w.g. mounting with tapered baguette	1650.00

PLATINUM DIAMOND BROACH
40 Baguette and six round diamonds plus 250/100 carat center make this \$22,000 piece a real value at
\$15,000

DIAMOND BROOCHES from **\$150**

PLATINUM MOTIF NECKLACE WITH PEAR-SHAPE DIAMOND **\$1100**

DIAMOND PENDANTS in all shapes and price ranges. **\$25 to \$2500**



DIAMOND DINNER RINGS
in every style imaginable from **\$250 to \$10,000**

Let Us Custom Style Your Ring

It's not too late to remount your outdated diamonds for Christmas. You will be amazed at what we can do with them - a factory-trained expert on hand at each store.



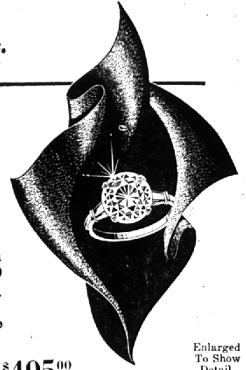
DIAMOND WATCHES
in all price ranges from **\$75 to \$2500.**



Choose from HAMILTON - UNIVERSAL MOVADO - GIRARD-PERREGAUX - ROLEX CROTON - BULOVA and many other makes!
Any item gift wrapped at no added cost.
A small deposit will layaway any item.

SHOW SUPER SPECIAL

We have mounted just sixteen of these (68/100 to 83/100) 3/4-carat Brilliant Diamonds. good color and fine cut in 14 K white gold mounting with a tapered Baguette diamond on each side.



Only **\$495⁰⁰**

PLATINUM DIAMOND EAR RINGS
36 Marquise plus 24 round diamonds in sunburst design. reg. \$7500.

Special **\$4950**
MANY OTHER STYLES from \$150

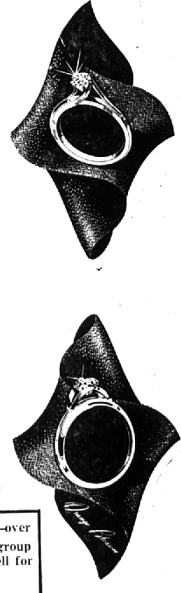


DIAMOND CUFF LINKS from \$75
DIAMOND TIE TACKS from \$25

SUPERB SOLITAIRE DIAMOND ENGAGEMENT RINGS

In your choice of "Cherished" - "Orange Blossom" and "Art Carved" mountings of your choice at exceptional values with diamonds listed below.

100/100 1 carat	\$750
95/100 1 "	\$700
90/100 9/10 carat	\$650
85/100 8/10 "	\$600
80/100 8/10 "	\$575
75/100 3/4 carat	\$500
67/100 3/4 "	\$450
63/100 3/4 "	\$400
55/100 3/4 "	\$385
50/100 1/2 "	\$330
45/100 1/2 "	\$295
40/100 3/8 "	\$250
36/100 3/8 "	\$225
33/100 1/3 "	\$195
30/100 1/3 "	\$165
25/100 1/4 "	\$110



Ask to see our show super-special solitaire—over 100 beautiful styles that we have decided to group at one price of \$99. These would normally sell for up to \$200.

TERMS OF COURSE - TAKE 10 MONTHS TO PAY
EVERY DIAMOND HAS A WRITTEN GUARANTEE OF VALUE AND FULL TRADE-IN ALLOWANCE AT ANY TIME

Connolly's
Manufacturing Jewelers

BIRMINGHAM
162 N. Woodward
MI 6-4293
Robert Fox, Mgr.

PONTIAC
16 W. Huron
FE 2-0294
Donald Lovett, Mgr.

MIRACLE MILE
2203 S. Telegraph
FE 2-8301
Donald Finney, Mgr.