

- ACROSS**
- Without: poetic
 - Obtains
 - Map
 - Spoken
 - Gladiators' "beater"
 - Eye window
 - Contend
 - For
 - A measure of length
 - Negative vote
 - Half an em
 - Remains
 - Verb: neuter: abbr.
 - Road
 - Top
 - Breeze
 - Anthropoid
 - Famous Quaker
 - Hier to a throne
 - Public notice
 - Believed
 - Hour: abbr.
 - Cover
 - Narrow inlet
 - Man's name
 - Guide
 - Cautions
 - Bulging: jar
 - A king of Israel
 - Communist

Answers to Puzzle Will Be Found on Page 7-D

35. Tapestry
38. Erase: print
40. Mid-East land
42. Old times
44. Past

14. A. cereal grain
19. Fisher-man's net
20. Savory
23. Flowed
25. Writing implement
27. A. cellarway
28. Good friends
29. One who edits
30. Greek letter
31. Alter
32. Sea eagles
33. Erase: print
40. Mid-East land
42. Old times
44. Past

14. A. cereal grain
19. Fisher-man's net
20. Savory
23. Flowed
25. Writing implement
27. A. cellarway
28. Good friends
29. One who edits
30. Greek letter
31. Alter
32. Sea eagles
33. Erase: print
40. Mid-East land
42. Old times
44. Past

BRIDGE

in BIRMINGHAM

By **BUD MAYBAUM**
Southern Michigan Bridge Association

To myself, I generally refer to Hilda Murphy as the "de pro" as that she is. She not only has registered herself as the top bridge teacher in Birmingham, but it is also a pleasure to watch her handle a difficult hand.

My hand for today was recently played by Hilda, and you can see why I regard her so highly. About half the field arrived at a small slam in spades, and even those who didn't bid this slam did make 12 tricks. But Hilda wasn't satisfied until she was sure she could get an extra trick somewhere.

Both vulnerable: Dealer: North: (Dealer) NORTH (Molly Corvelli)

♠ K Q 7
♥ Q 9 3
♦ K 8 5
♣ A Q 8 4

WEST EAST
♠ 8 2 ♣ 6 3
♥ J 10 5 2 ♠ K 8 7 6
♦ 9 7 6 ♣ Q J 10 3 2
♥ J 9 5 3 ♠ 10 6

SOUTH (Hilda Murphy)
♠ A J 10 9 5 4
♥ A 4
♦ A 4
♣ K 7 2

The bidding:
NORTH EAST
1 NT pass 3 ♣ pass
4 ♣ pass 4 NT pass
5 ♣ pass 6 ♣ all pass

Opening lead: J ♣

The bidding is most usual, but, however, six no-trump is a better contract. There are 12 tricks off the top. However, the spade contract gave West a chance to help Hilda increase her contract.

BETH AND Jerri Ottman, Joanne Smellie and Marie La Prise, Peg Main and Madeline White, Mae Esch and Greta Hayward, John Owen and Mike Hunt, Mary Ellen Briggs and Stewart Weingarden,



Plays Von Trapp

Don McKenzie, who is employed by Birmingham Lumber Co., will play the lead role of Captain Georg von Trapp in the Civic Center Theatre production of "The Sound of Music" this week end at Ford Auditorium, Detroit. He is a resident of Oak Park and the father of five children. His past musical experience includes roles in "South Pacific," "Anything Goes" and "Carousel," all with the Berkeley Community Theatre. The show has an 8 p.m. curtain Friday and Saturday and 7 p.m. Sunday.

Collectors Appear On 'After Hours'

Ed McKenzie brought stories from the past to life as he presented a special collection of tombstone art on "After Hours" Tuesday.

Mr. and Mrs. Don Odle, 20755 Adair Court, Franklin, joined Ed to give a pictorial history of their hobby of grave rubbing. The Odles featured the memorial art found on tombstones dating prior to 1808.

"After Hours" is seen Monday through Thursday following the "Lee Crane Show" on Channel 7, WXYZ-TV.

The "grave-rubber" Odles were featured Oct. 29 in a lead story in the Arts of Living section of The Birmingham Eccentric.

Max Grant and Pete Polinsky, Donna Zagrodzky and Ralph Tyson and Ken Carlen and Larry Nixon. The Southern Michigan Bridge Association winter's game will be held Sunday, Dec. 13 at 6:30 p.m. at the Birmingham YMCA. You receive double master points in this event, and you are eligible if you have had your name in this column in the past month.

Movie Guide

Parentent Committee
Birmingham P.T.A. Council

MOVIE Green Sheet National Legion of Decency

Becket A-MY A-3 recommended
Fate Is the Hunter A-MY-Y A-1
The Vow A A-1 SC
Santa Claus Conquers the Martians A-1

* recommended as superior entertainment especially for children

CODE GREEN SHEET

These audience symbols are intended as broad guides to selection, and do not indicate either recommendation or non-recommendation of the films to which they are applied.

A Adults
MY Mature Young People
Y Young People (12 years to 16 years)
C Children (unaccompanied by adults)
GA General Audience

NATIONAL LEGION OF DECENCY

A-1 Morally Unobjectionable for General Patronage
A-2 Morally Unobjectionable for Adults and Adolescents
A-3 Morally Unobjectionable for Adults
B - Morally Objectionable in Part for All
C Condemned

SC A separate classification is given to certain films which, while not morally offensive in themselves, require some analysis and explanation as a protection to the uninformed against wrong interpretations and false conclusions.

Seasons of Greetings

From

DEERFIELD VILLAGE

West Maple Road at Middlebelt in Bloomfield

Outstanding new homes from \$29,950. Seven fully decorated models open daily and Sunday from 1 to 5 P.M.; Saturday 10 AM to 6 PM. For more information, call MA 64888.

ROBINSON BROTHERS, INC. • SULLIVAN SMITH INC. • WOODBURY BUILDING COMPANY

YOU, TOO

... will see the plus values

in *Overbrook**

MAX BROOCK INC.
MI 4-6700

*West Long Lake and Lahser Roads

THE KEATING COLUMN

RUN! DON'T WALK!!

Houses in this area and at these prices, don't last—especially when they have 4 bedrooms—2 full baths. 2½ car garage, attached to the house by a lovely large screened breezeway. Birmingham schools. A mere \$19,900.00.



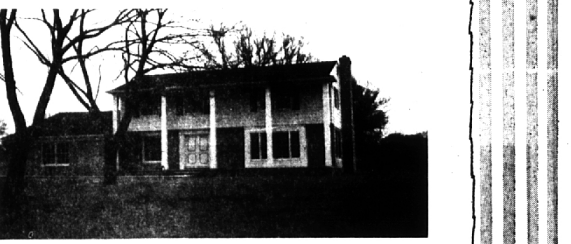
RARE RANCH

Rare, because it is one custom designed ranch built with the larger family in mind. 4 ample bedrooms, 2½ baths—big family room, 2 nice fireplaces. All this on an extra large lot for a surprisingly low \$31,900.00.



BRAND NEW IN BEVERLY HILLS

This custom built quad-level is all set for you to pick colors. Spacious accommodations in this 4 bedroom, 3½ bath, ultra modern kitchen, 12x24 foot family room with fireplace. Birmingham schools. Call for an appointment, now. \$39,900.00



CHARMING ELEGANCE

Nestled on a beautiful treed knoll, this brand new 5 bedroom colonial is ready to be made into a home, by your family. Large living room and dining room, lovely paneled family room. Bloomfield schools. Our own Vernor Estates. \$58,900.00

KEATING OF BIRMINGHAM

525 SOUTH WOODWARD AVENUE
BIRMINGHAM, MICHIGAN, JO. 6-3121 MI. 6-1254

WHETHER THE HOME YOU SEEK — BE VERY MODERN — OR THE ULTIMATE IN ELEGANCE — LOOK TO KEATING.

IS YOUR BACK YARD AN UNTIDY "Eye-ful"?

A smokeless, odorless GAS INCINERATOR will change this view!

BURN YOUR GARBAGE AND TRASH INDOORS!

End your garbage problem once and for all! A new Gas Incinerator in your basement or utility room conveniently disposes of all burnable garbage and rubbish without smoke, odor, or noise, for only pennies a day.

SAVE \$20 on installation of new, smokeless, odorless Gas Incinerators—SEE YOUR DEALER WHILE THE SALE IS ON!

Published by Consumers Forest Company