

**PICTURE FRAMING**  
EXPERTLY DONE IN OUR OWN SHOP  
**ART SUPPLIES**  
FOR THE AMATEUR AND PROFESSIONAL  
**ART CLASSES**  
FOR ADULTS AND SCHOOL AGERS

**ARTISTS' SUPPLY CENTER**

VISIT OUR  
ART GALLERY

1220 N. Woodward (E. Side)  
2 blocks South of 12 Mile Rd.  
LI 8-7680  
Open Daily 9-6  
Thurs. & Fri. til 9 p.m.

**BBB—  
THE ONLY  
BANK IN  
BIRMINGHAM  
TO STAY OPEN  
SATURDAY MORNING  
FOR YOUR  
CONVENIENCE**



**BIRMINGHAM-BLOOMFIELD BANK**  
250 Martin St., Birmingham, Michigan  
Midwest 7-2500  
Member Federal Deposit Insurance Corporation



**Make Him Really Happy  
This Christmas with a  
Taylor Electronic  
Garage Door Operator**

Then BOTH OF YOU can open or close your garage door and turn your garage light on or off FROM YOUR CAR. What a convenience in darkness, rain and snow! What protection for your garage's contents and discouragement for prowlers! Just push the button on the Taylor portable hand transmitter (kept in your car) to operate electronically your garage door and light. Fully guaranteed factory installation. Phone or write today for full information . . . surprise him with the finest Christmas gift imaginable!

WELL-GIFT-WRAP THE HAND TRANSMITTER TO PUT UNDER YOUR TREE



We can arrange for actual installation of the door operator at your convenience.

Phone 836-3430

**Taylor  
Garage Doors**

Div. of Garford Manufacturing Co.  
19800 Fitzpatrick Ave.  
Detroit, Michigan 48228

**NEWS OF THE SCHOOLS**

**Song Groups  
Perform at  
B'field Junior**

By HARRIET FOX  
Special Writer

A Thanksgiving assembly was held Wednesday. The assembly gave all the choral groups and Mr. More's 8th grade French classes a chance to perform for the first time. A poem entitled "What is Thanksgiving?", written by our speech teacher, Mr. Drummond, was given by Susan Gadd. A sports dinner took place Tuesday night. The dinner was held at East Hills Junior High for all the boys from both schools on the varsity football and soccer teams, their coaches and the cheerleaders. Awards were given afterward.

**BLOOMFIELD Hills Junior High** is one of many schools across the nation taking part in the National Longitudinal Study of Mathematical Abilities.

A group of ninth graders who have been taking these tests since seventh grade again took the tests on Nov. 16 and 17. The program is an experimental one to determine whether the advanced math courses are working.

Class pictures taken in October were returned Nov. 16. All pictures were in color this year. Students who were absent when pictures were taken in October had their photographs taken on Monday.

A dance for seventh graders only was held Nov. 19. The soe-hop was held after school in the cafeteria. Records were played and refreshments were sold.

A NEW choral shell for the choir and glee clubs arrived Nov. 17. The choral groups have been saving for the shell for four years. Money taken in from concerts over the years has helped pay for it.

**Seniors wear  
New Country  
Day Sweaters**

By SUSAN JUDD  
Special Writer

There was the entire senior class on the morning of Thursday, Nov. 19. They were hiding in a classroom until the bell rang. This was the morning that the new "Senior Sweater" was introduced to the rest of the school.

When the underclassmen and faculty had gone into chapel, the seniors marched in to show the Scotch-green, cable-knit, V-neck sweaters which had been chosen as this year's class sweater.

Several of the girls are spending the Thanksgiving holidays away from Birmingham. Jill Young and her parents are going to show the nation's capital to their foreign exchange daughter, Maj-Britt Tharlin.

**TWO OF THE GIRLS**, Margie Birdorf and Mary Ann Bricker, are going to be in Ohio. Debbie Wilson will be in Virginia and Becky Evans will be in Indiana.

Country Day is happy to welcome Debbie Wilson back into the junior class after a short time at boarding school.

We are gaining an addition to the school parking lot. Because of the increased enrollment and subsequent increased number of cars, it has been necessary to add a new gravel parking lot to the east end of the school.



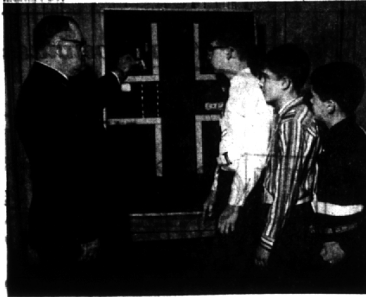
**GREETINGS & GIFTS**

are brought to you from  
Friendly Neighbors  
& Civic & Social Welfare  
Leaders

**WELCOME WAGON**

On the occasion of  
Change of residence  
Arrivals of Newcomers  
to Birmingham

MRS. H. WALES PRICE.  
Midwest 4-0516  
(No cost or obligation)



**Safety Patrol Class**

Birmingham's first Safety Patrol Workshop was held in Seaholm's Little Theater Nov. 18 as patrol boys from 21 local schools attended the conference. Sponsored by the Birmingham Public Schools and the Birmingham Police Dept., the workshop stressed the important part patrol boys play in safety. Listening to Lt. Robert Schaula are (from left) Danny Vincent, Walnut Lake School; Mike Eickmeier, Adams; and Mike Beaver, Holy Name.

Page THE BHAM ECCENTRIC  
2-B Thursday, November 27, 1964

**Derby Math  
Classes Take  
National Test**

By NANCY UNDERWOOD  
Special Writer

Derby students took the National Longitudinal Study of Mathematical Abilities last week on Thursday and Friday in their math classes.

The football season is over, ending with two ties, four wins and one loss for Derby.

The Trophy Case, Assembly and Variety Show Committees held their first meetings last Wednesday, Thursday and Friday, respectively.

**IN THE LAST MARKING** period, 32.1 per cent of the seventh grade made the academic honor roll; 35.3 per cent of the eighth grade; and 27.1 per cent of the ninth grade. To make the honor roll, a student must have a 3.0 to a 4.0 point average.

New student teachers will be reporting to Derby on January 4, 1965. In the French department, with Mr. Knowles, will be Sally Meyer; with Mrs. Decker, in science, will be James Moody; and in the history department with Mr. Murray will be Carol Tempone.

**EDWARD J. HALEY**

Funeral Director

24525 Northwestern Highway  
(At 10-Mile Rd.)

Ask for Miss Classified, MI 4-1100

**IS YOUR CAREER PROGRESS DETERMINED  
BY CIRCUMSTANCE, CHANCE OR CHOICE?**

Career Directions offers professional assistance to success-minded men and women who wish to make their available years and talents work to full advantage in an increasingly competitive world. **EXECUTIVE PLACEMENT** . . . Confidential placement services for management and professional personnel who are considering a major career move. (Interested individuals are invited to submit a resume for our confidential placement file.)

**CAREER COUNSELING** . . . Individual interviews with a consulting psychologist and tests prescribed by him to analyze your abilities, interests and personality factors as these affect your career. **CAREER WORKSHOPS** . . . Small group meetings to provide professional assistance in such areas as: "How To Market Your Services," "Job Interview Methods and Techniques," "Creating An Executive Image," and other job related programs.

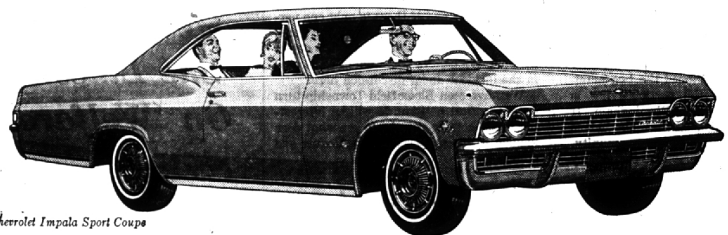
under the supervision of certified consulting psychologists

For additional information, telephone WO 5-7296

**CAREER DIRECTIONS DIVISION**  
ADAMS, LAFFERTY, MADDEN & MOODY  
2021 PENOBSCOT BLDG., DETROIT

**NOW ROLLING IN... America's most popular cars!**

So place your order now for delivery on the beautiful new kind of '65 Chevrolet that's right for you!



'65 Chevrolet Impala Sport Coupe

**'65 Chevrolet Impala** It's longer, lower, wider—with comforts that'll have many an expensive car wondering why it didn't think of them first. More shoulder room, more leg room up front. Curved side windows. In fact, just about everything's new right down to the road. And even that'll seem never because the Jet-smooth ride is smoother than ever.



'65 Chevelle Malibu Super Sport Coupe

**'65 Chevelle Malibu** Here's all that made Chevelle America's most popular new-size car—plus some new surprises. Like the silky way its new ride skims over the choppiest roads. Like V8 power that'll make you think we stole some of Corvette's stuff—which we did. All told, six engines are available from a quieter six to a V8 that comes on 350 horses strong.



'65 Chevy II Nova 4-Door Sedan

**'65 Chevy II Nova** It may be the expensive-est looking thrift car you've laid eyes on. But thrifty it is. The big difference being that Chevy II's marvelous mechanical efficiency now wears a debonaire new look. And offers a new range of engines, including a new 300-hp V8. Ready for a go at the liveliest thing that ever happened to thrift? The Chevy II's are rolling in.



New Corvair Corsa Sport Coupe

**'65 Corvair Corsa** The longer, wider design gives all closed models a hardtop roof, along with more shoulder and entrance room. And to go with the racier look, there's up to 180 hp available in the new Corsa series, up to 140 hp in the Monza and 600 series. Also a flatter riding independent suspension, more responsive steering and a wider road stance.

**More to see, more to try in the cars more people buy**  
Order a new Chevrolet, Chevelle, Chevy II, Corvair or Corvette now at your dealer's