

Dial Time Service Is Exact Process

Thousands of person dial the Michigan Bell Telephone Company's time service every day to check everything from wrist watches to grandfather clocks. Regardless of where customers dial time service in Michigan, they hear the same feminine voice saying, "At the tone the time will be . . . followed by the hour, minute, and seconds at 10-second intervals. Time service comes direct from a compact machine in Michigan Bell's Madison building in Detroit. It's piped around the state by long distance lines.

THE VOICE customers hear is supplied by three separate film recordings. The films are put on three drums. Each drum revolves at a different speed. They're controlled by an elaborate system of gears, including some square ones and others with diamond teeth. One drum contains the film with

Military Spending Cut Won't Hurt Michigan Economy

Michigan's economy will not be affected significantly by an expected cut in military spending, according to an article in the Michigan State University publication Michigan Economic Record.

The report notes that defense spending accounts for less than 3 percent of the state's total personal income, and most of this income is through industries "which could easily produce the same or similar goods for civilian consumption."

The article's author, Otto Feinstein of Wayne State University, adds that "companies in Michigan that produce for the military have only a minor fraction of their business in the defense market, differentiating Michigan industry from highly intensive military economies.

the hours, another the minutes, and the third the seconds.

The three separate films shorten the whole operation to an amazing degree. If a single sound track were used, it would have to be 10 miles long. The person recording the film took just 10 minutes to chalk up 12 hours of time.

TO RECORD the hours, she spoke only 12 sentences. She repeated, "At the tone the time will be one." "At the tone the time will be two," and so on through 12 hours. The telephone customer is on his own as far as a.m. and p.m. are concerned.

For the minutes, the recorder simply said the numerals one through 59, and then the word, "exactly." The seconds need only six short phrases because the time is given every 10 seconds. The tone is also on the third film.

The most intricate and busiest part of the equipment is the selector carriage. It travels back and forth across the drums, selecting the hour, minute, and seconds in proper sequence.

IF THE time varies (odds are it won't be more than a fifth of a second) over a period of two weeks or more there's a button on a control board which can be pressed to either retard or advance the voice on the machine to the correct time.

When commercial power varies, the machine's own power plant

goes on to keep the mechanism working at the proper speed so that the time won't be fast or slow. Should these power sources fail, the equipment would be operated by batteries until diesel-powered generators clicked on.

Time service reports "real time" which comes to Michigan Bell from the National Bureau of Standards in Washington, D.C. Time signals are broadcast every five minutes from the bureau's station, WWV, in Arlington, Va.

To make certain Michigan Bell's time service is correct, the company has a radio receiving set with a 92-foot horizontal, clothes-line-like antenna. The set is constantly tuned to WWV and the American, one Filipino.

Joins Peace Corps In the Philippines

Ronald A. Wilcox, now on a brief vacation in Hawaii, departed Monday with about 115 Peace Corps Volunteers for two years of teaching in rural elementary schools in the Philippines. Like the 280 volunteers already at work, each will be one half of a teaching team, one American, one Filipino.

the University of Hawaii on the history and culture of the Philippines. They also received intensive language instruction in one of the country's three major dialects.

In addition they were given refresher courses in American history and institutions, and world affairs, with special attention to current Far Eastern events.



Far East Visitor

It was "Indian Day" in the sixth grade class of Walnut Lake School last week, as students donned saris and other Far Eastern dress to honor foreign student visitor Rekha Mehra. Miss Mehra of Bombay, currently a student at Groves High School, shows Judy Heinzel how to apply a religious marking common in India. Another sixth-grader, Doug Robertson, looks on.

WINTER TERM BEGINS DECEMBER 7

A Professional School since 1896

Junior, higher & professional accounting;
Secretarial, and executive secretarial;
Clerical, office machines & I.B.M. key punch

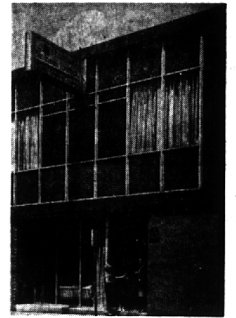


Speedwriting nancy taylor
120 WORDS PER MINUTE
Shorthand Secretarial finishing course

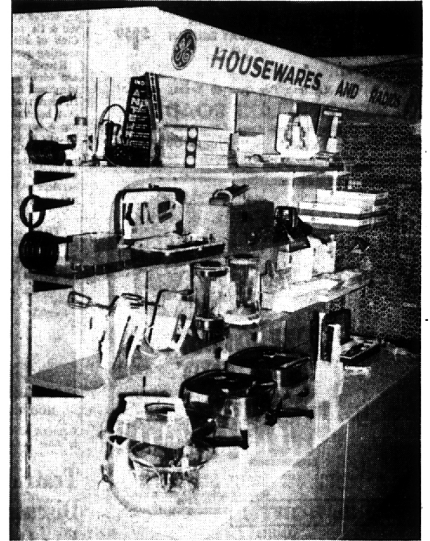
PONTIAC BUSINESS INSTITUTE

Phone 333-7028

18 W. Lawrence, Pontiac, Michigan



Here's the place to go, And the man to see . . .



For General Electric Small Appliances

The appliances in these pictures are all the very newest by General Electric . . . and we do mean all. We have the new G.E. immersible coffeemaker, cordless knife, electric fire starter, and even a new electric cigarette lighter—plus all the old reliables, like toasters, steam irons, frypans, blenders, mixers, and can openers. And we stock all the models available, not just the one or two best sellers, so your selection is complete.

The place you see pictured is the upstairs sales floor at Hawthorne Electric, where General Electric products are our specialty. We buy, display, stock, sell, and service them all day every day, and have done so for many years. It figures that with so much practice we should be able to buy them advantageously, and sell them competitively—and we do.

The man you see is Richard H. (Dick) Dewey. Dick has only been with us about a month, but already he's quite an expert on small appliances. You see, this isn't all new to him, because he was in the appliance business for three years back in the early 50's. Dick has lived in Birmingham for forty years. He is a past Commander of the Charles Edward Post #14 of the American Legion, very active in Oakland County Veteran Affairs, and has been Post Chairman of Wolverine Boys State since it's inception in 1938. We're very proud to have him as a salesman with our firm.

If you don't already know Mr. Dewey, drop in and get acquainted. You'll like him. But watch out! Although he's a soft sell guy, he's been around long enough that he never forgets to ask for the order.

Hawthorne (ELECTRICAL COMPANY)
GENERAL ELECTRIC SALES CENTER

375 HAMILTON
BIRMINGHAM
MI 4-2200

Open Thurs. & Fri. Evenings Until 9 p.m.



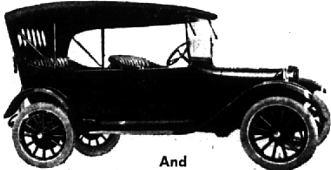
"WHERE THE HUNT ENDS"

Hunter Dodge

. . . of Birmingham

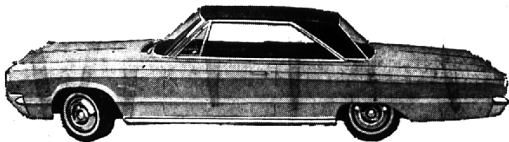
Invites you to join the fun, bring your cameras, for our presentation of the old and the new!

1914 DODGE TOURING SEDAN



And

THE BEAUTIFUL NEW MONACO



Special PRE-CHRISTMAS sale on all new 1965 models

GET AN OLD FASHIONED DEAL ON AMERICA'S NEWEST CARS

Campers, Trucks, New 1964 Demos, & Officials' Cars

Truly we have much for which to be thankful this joyous, Holiday season. As a gesture of appreciation for your great response to our sales and service offerings, we would like you to participate in our HOLIDAY-FAMILY DINNER DRAWING.

MOM BE OUR GUEST WITH DAD, AND THE CHILDREN, AT ONE OF THE FINE RESTAURANTS IN OUR AREA.

Please fill out this coupon and drop it in the RED BOX, next to the 1914 DODGE TOURING SEDAN, IN OUR SHOWROOM. COME IN TODAY. OF COURSE, NO PURCHASE IS NECESSARY.

COUPON
HUNTER DODGE HOLIDAY FAMILY DINNER DRAWING
Good for one of the many drawings to be held now until Christmas.

NAME: _____
ADDRESS: _____
CITY: _____
PHONE: _____ Present Car, Make _____ Year _____

499 S. HUNTER BLVD. Midwest 7-0955, Jordan 4-5170 Birmingham, Mich.