

Calendar of Cultural Events

Thurs., Nov. 19
ARTS
BIRMINGHAM THEATRE—“The Young Lovers” and “Honey on a Hotel,” through Tues.
BLOOMFIELD THEATRE—“Becket,” through Tues.
THE RAVEN—Folk singer Ron Caden in return engagement through Nov. 22 at Raven Gallery, Birmingham. Hootenanny Sundays, Showtime 9:30 p.m. Tues.-Sun. Admission charge.
BLOOMFIELD ART ASSOCIATION—20th annual exhibition of Birmingham Society of Women Painters through Dec. 5 at Birmingham Art Center. Galleries open 2-5 p.m. Tues.-Sun.
CRANBROOK INSTITUTE OF SCIENCE—Exhibit “Photography from Five Years of Space,” through Nov. 22. Hours 1-5 p.m. every day except major holidays. In Bloomfield Hills. Admission charge.
ACADEMY OF ART—Tamarind non-a-tive lithographs exhibited at Cranbrook Galleries, Bloomfield Hills. Through Dec. 13. Hours 2-5 p.m. Tues.-Fri. and 1-5 p.m. Sat.-Sun. except major holidays. Admission charge.
BHAM NEWCOMERS DRAMA CLUB—“Ladies, I Address You Privately,” one-act comedy, at 8:30 p.m. at the Community House, Birmingham. Admission charge.
BRIDGE—Birmingham Duplicate Bridge Club at 7:45 p.m. at Birmingham YMCA.
Fri., Nov. 20
LATHROP PLAYERS—“Fool’s Paradise,” a farce, is performed at 8:30 p.m. Nov. 20-21 at Birney Junior High School, Southfield. Admission charge.
TRAVEL FILM SERIES—Curt Nagel narrates his color films on “Portraits of Mexico” at 8 p.m. at the Community House, Birmingham. Admission charge.
JUNIOR LIVING SERIES—Mrs. H. W. Schoenlein presents “A Demonstration on

Area Club Member Creates Yule Tree from Tumbleweed

Spraying paint, glitter and the usual holiday trimmings are coming off the shelf to create goodies for the Christmas decor.

The garden team which lives in the Westchester area always outdoes itself with original creations. Today it was racing across a large open field chasing a well-known tumbleweed because I had seen one of the members create a festive tree by spraying a tumbleweed with a color. Then trimming it with white Italian lights.

It had been skillfully attached to a plant and dangled in a tub. This same idea was seen at the traditional Christmas show at the Birmingham Branch of the National Farm and Garden Association.



Mrs. Burlingame

At our house we always have gum ball trees which are created from wild Hawthorn trees. They are secured in a large pot, sprayed a chosen color, then the spikes hold a colorful array of gum drops.

For a month I have been collecting a piece of driftwood which is bleached by years of lying under the surface of the water. The shape is very interesting and will lend itself with its many branches to a holiday motif.

Please don't think that I am against the traditional Christmas tree but I like to fuss around with new ideas.

MANY of our recent problems have been due to the fact that Joyce Kilmer wrote: “Trees.” “I think that I shall never see a poem as lovely as a tree.”

When you have been brought up on this poem you feel that your chosen home must have a lot of trees. I am sure Joyce Kilmer hadn't raked and raked leaves, trying to find a suitable disposal plan for said leaves when he took pen in hand.

Just calculate the total number of leaves which will greet you when these young trees mature; you young, eager gardeners.

Look around your home. Don't you change your carpeting, drapes, and upholstery after a decade, if not earlier? Well, how about some of those evergreens right now which have overgrown their location?

SOMETIMES you haven't given them their semiannual haircut, and they have grown all out of proportion. Your evergreens give you their best dividends when the snow plops down on their branches to form a beautiful pattern, and the spruces attract birds as a shelter from the cold winds.

You can still plant needed evergreens, time is flying, though. The spruces which you see

often near the foundation of a house will grow to be 30 feet high and have a diameter of at least 25 feet. If they aren't allowed to have a natural growth for their branches, they will begin to drop their needles where there is contact with another tree or a structure.

WITHIN the last decade we have been seeing the metasequoia or dawn cypress which was rediscovered by a Chinese botanist near Chungking. It was sent to all areas of the world to test its growing pattern as controlled by various climates.

It has been reported to be growing 5 feet-7 feet per year. As it will grow very high, it should be planted as a specimen. It will lose its needles in the winter here and take on the character of a deciduous tree with empty branches in the wintertime even though it looks like an evergreen in the summertime.

Quality Improved In Painters' Show

Reviewed by ILONA ALTSHULER WEISSMAN

The 20th annual exhibition by the Birmingham Society of Women Painters is now on view at the Birmingham Art Center. Included are works ranging from realistic to the now fashionable “pop art” styles.

The quality of work has greatly improved since last year's exhibit. From all appearances, this is an active group—willing to experiment with new methods and techniques. The approach is individual with little evidence of the influences of any particular teachers.

An outstanding painting is Laura Couman's “Polaroid Strip No. 1,” a softly keyed earthy abstraction. Kathleen Birch has several pieces. In the painting section her acrylic “Rocket” bursts forth like the 4th of July. She also has two beautiful, carefully constructed fused glass pieces.

LUCILLE Ahrens', three entries are all in different styles. Her pictorial study of Oriental children is

appealing. “Hong Kong” harbor is a bright geometric arrangement. Her impressionistic “Still Life” is her best piece—a brilliant bouquet of flowers which seem to reach out to the viewer. She has come a long way since last year's exhibit.

Among acrylic paintings to note are Fern Tate's soft and moving “Carrousel”; Eloise Green's craggy mountain-like “Forest No. 2”; and her textured, whimsical, “The First Day.” Lillian Hopkin's “Abandon” is a carefree piece with large dripping splashes of color. Her “Friends” depicts two children somewhat hidden among more splashes of color.

The four o'clock sun added to the richness of Fern Tate's crimson “Sunset” oil. Sally Parson's large “Landscape with Aqua Spheres” contains a well-developed combination of shapes.

Eve Szilagyi's oil “Lilacs” has a wonderful windswept quality. She is a talented painter, but why was last year's entry “Peace” exhibited again? (See PAINTERS, 7-D)

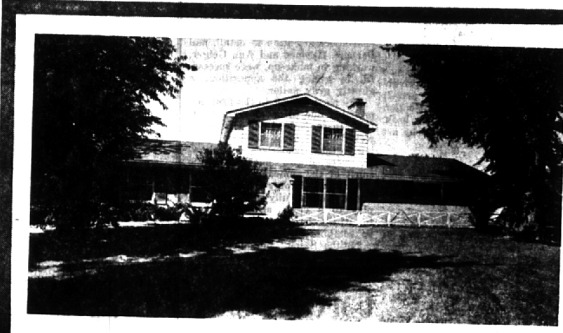
Leadership
CUSTOM RUG CLEANING

For 50 years, we've specialized in custom rug cleaning. Only Leader has the proper methods, modern plant facilities, skilled workmen and the personal interest to do a perfect job every time!

SPECIAL SERVICES
 Leader repairs, rebinds and reweaves. Our specialists can remove those difficult spots and stains at economical prices.

Leader
 CARPET CLEANING CO.
 8700 LINWOOD

TY. 5-8400



THE BIG QUESTION!

- Do your children find wonderment in exploring creeks and ravines?
- Do they still find it fun to go to the store for you?
- Do you like them to walk to school?
- Do your boys wish they had a football and baseball field in their own back yard?
- Do your children like to be on their own to walk to the library?
- Do you need a 4 bedroom, 3 bath Farm Colonial?
- Do you want country atmosphere and yet twelve minute walk to Birmingham business center?
- Do you want Bloomfield Township taxes and Birmingham schools?
- Do you need immediate occupancy?

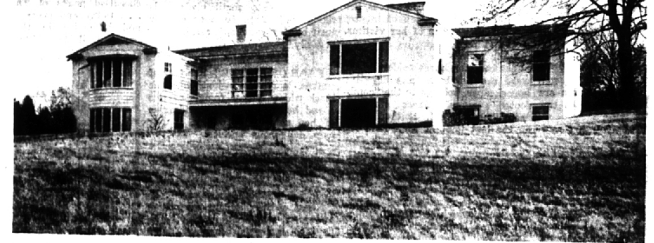
Then your children and you too, will like the freedom of living in this charming home. Priced under \$43,000.

JACK T. ELLIOTT

Berndt, Etter & Van Maaren, inc. Realtors
 PHONE 644-3500 (area code 212) for additional information
 360 HAMILTON, BIRMINGHAM, MICHIGAN 48011



FOR THOSE WHO WANT THE ULTIMATE IN GRACIOUS LIVING — Here is a luxurious home in Bloomfield Village. Five bedrooms, four bathrooms and two lavs. Library, dining room, family room and outstanding recreation room with bar. Deluxe Paddock swimming pool, lawn sprinkling system, air-conditioning and Aprilaire humidifier and air-filter. Many more extras for you to see and enjoy. \$89,500.



ONE OF THE LARGEST SITES IN BLOOMFIELD HILLS — Near Christ Church with breathtaking view of valley below. Four large bedrooms plus two dressing rooms. Four bathrooms and powder room. Cherry paneled library. Large dining room with bay. Superb kitchen with enormous steak grille and hood plus built-in oven and range. Huge closets—Everything is the best. You'll agree ONCE YOU SEE IT. \$99,500.



A HOME WITH OODLES OF ROOM and in an excellent setting. Three bedrooms, two bathrooms, library, dining room and 19 foot family room with second fireplace. Stainless steel oven, range, refrigerator and freezer. Just remodeled in 1963. QUICK POSSESSION.



NEWEST OFFERING IN THE VILLAGE—Four bedrooms and 2½ bathrooms. Family room. Dining room. Carpeting and draperies throughout. Quanton school. Walk to Maple bus and Seaholm High school. \$44,900.



VACANT AND PRICED TO SELL! Three bedrooms, bathroom and lav. Screened porch, tiled recreation space in basement and out-door barbecue. Low down payment. \$15,990.

Weir, Manuel, Snyder & Ranke, Inc.

298 South Woodward
 Birmingham, Michigan Realtors

Birmingham 644-6300
 Phones: From Detroit 566-2323