

EDWARD J. HALEY

Funeral Director

24525 Northwestern Highway
(At 10-Mile Rd.)

Al's Overhead Garage Door SALES AND SERVICE

FREE ESTIMATES
WE INSTALL AND REPAIR
Operators and Radio Controls

- 24 Hour Service
 - Very Reasonable Prices
- MI 6-8917
2020 WEST BIG BEAVER
Troy, Michigan



Al Haley

Derby Forms Committees

By NANCY UNDERWOOD
Special Writer

The Derby student council has formed two new committees: the variety show committee, formed to help the two sponsors, Miss Ingham and Mrs. Postell; and the assembly committee organized to prepare more assemblies that will profit the school and the students. The score of the Derby-Clinton football game on Nov. 4, was Derby 26, Clinton 6.

Final tryouts for water ballet were held on Nov. 12.

VETERAN'S DAY was honored by a few moments of silence and playing taps played by John Zimner and Roger Holtz.

The ninth grade winning field hockey team of the gym classes had a tournament after school on Nov. 9. The champion team of the school is Nancy Underwood's team, consisting of Sandy McCullough, Ruth Sundquist, Lynne Friebe, Lisa Hadden, Jenny Stilson, and JoAnne Johnson.

2-B THE BIRMINGHAM (MICH.) ECCENTRIC Nov. 19, 1964

NEWS OF THE SCHOOLS



THE PROTAGONISTS, Bloomfield Hills' drama club, presented their annual fall play to the school Nov. 12, 13 and 14. Acting out their parts in "The Mouse That Roared" were (from left), Karen Tarkopf, Jeff Brogan (in rear), Howard Sturm, Terry Niggenman, Terry Cook and Roger Plaxton.

Bloomfield Hills Drama Club Presents Annual School Play

By CAROL MORRISON
Special Writer

The Protagonists, the Drama Club of BHHS, produced their fall play, "The Mouse That Roared," Nov. 12, 13, and 14. Last Thursday a matinee was held for the benefit of those students who could not attend the two evening performances.

The clever satire on foreign relations and the Cold War drew many "roars" of laughter from all three audiences.

"The Mouse That Roared" is the dramatization of a novel written by Leonard Whibberly. The story of a young man who decides to lose a war with the United States, after America inadvertently ruins its export market. The results are hilarious, but they also teach a lesson.

THE LEAD roles of the play went to Carol Chave, Jeff Keith, Pat Horton and Dave Muir. The entire cast consisted of some 34 students.

Many Protagonists worked behind the scenes to make "The Mouse That Roared" a success. These students included John Boutin, stage manager; Tim Woodin, head of publicity; assistant director Rosemary Riche and Bud DeNador, chairman of the make-up committee.

Seven of Bloomfield's students have been honored by being selected as members of the Michigan Chorale. They are Connie Booth, Joan Aitken, Mary Louise Williamson, Jim Anderson, Ralph Bozell and Chuck Fairbank.

The Chorale will tour Europe for eight weeks this summer, performing in schools, churches, factories and community halls. At each place they perform, the choristers will live with families of the community.

Applicants to the Michigan Chorale need more than musical talent. They must maintain a high scholastic average, as well as being leaders in school, church and community affairs.

IT IS ALSO mandatory that they be interested in people, and willing

to accept responsibility for their conduct while abroad.

The Chorale will release from two to five every Saturday afternoon at Ann Arbor High School, beginning Nov. 11. They are conducted by Mr. Anthony Pratt.

Bloomfield held its annual homecoming festivities the week of Nov. 2. Celebration began Nov. 5 with a Parade Supper sponsored by the Shield. This preceded the traditional bonfire, where Holly, the Barons' opponent for the Homecoming game, was burned in effigy.

A pep rally was held in the gym at the end of last hour on Nov. 6. It is a tradition that the class that cheers the loudest at this annual pep assembly receives a cheering trophy for their show of enthusiasm. This year, the junior class won the trophy.

At 2 p.m. Friday, each class paraded the float it had made to express Homecoming spirit. The floats were judged according to appropriateness, originality and appearance. "Whale em," constructed by the sophomore class, was chosen as the best float.

THE BARONS met the Holly

Broncos in the football game. At half-time, members of the Homecoming Court paraded the field. These included Marilyn Jamieson, Barb Calhoun, Barb Deeb, Joan Carter and Delby Martin, seniors; junior princess, Carl Christensen; and Diane Jones, sophomore princess. Marilyn Jamieson was voted Homecoming Queen of 1964.

"Autumn Haze," the Homecoming Dance, climaxed Homecoming Week. Held Saturday night, the dance was a great success. The highlight of the evening was the crowning of the Queen.

MSU Economist
Completes Study

A Michigan State University economist professor, Dr. Milton C. Taylor, has completed the first study on fiscal reform under the Latin American Alliance for Progress program.

Titled "Fiscal Survey of Panama," the study was prepared by Dr. Taylor under sponsorship of the joint tax program of the Organization of American States and the Inter-American Development Bank.

8th-Grader Wins Contest At Berkshire

EDITOR'S NOTE: The following essay, written by Steven Jacobson, an eighth-grader at Berkshire Junior High, won first place in the school contest conducted by Lynn Ferguson, mathematics teacher in connection with American Education Week.

"EDUCATION IS IMPORTANT." Ah, my old friend the park bench again. We see quite a bit of each other, don't we. I may as well talk to you; you're the only one I have to talk to. I have had no friends since I quit high school two years ago. During the day they are at school, and at night they are doing homework. Mom says, "Go out, get a job, stay out of trouble"; dad works all day. I can't get a job because I don't have a diploma.

I can't go back to high school because I'm too old and I don't want the younger ones to laugh at me. College is out of the question now. I have nothing to do. When I quit, I thought it would be great to have nothing to do. I now know how wrong I was.

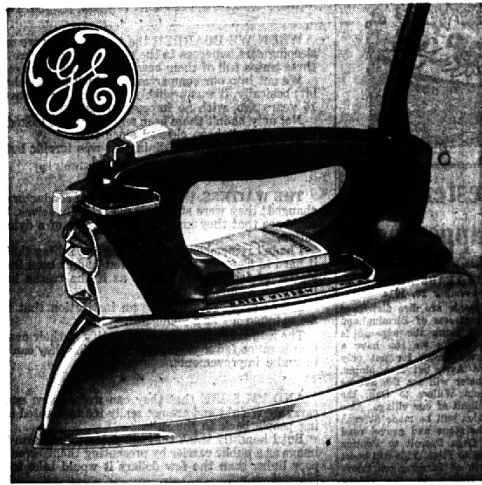
WHEN I WAS AT SCHOOL, I never had any of these problems. Had I been smart then, I would



STEVEN JACOBSON

never have quit school. But like a fool, I disregarded what everyone told me about staying in school. I guess I quit because I did not want to do any work. I thought work was for squares.

I now see that a person must have a good education to be anything worthwhile in life. Maybe I should see about going back to school or even to night school because it is better to have wasted only two years of my life than all of it. Well, old friend, we may not be seeing that much of each other after all...



BUY A NEW GENERAL ELECTRIC SPRAY, STEAM & DRY IRON

(THE ONE WITH THE WATER WINDOW)

...get a can of
STALEY STA-FLO[®]
SPRAY STARCH
FREE



NOW, you can whisk through your ironing two ways! First—the General Electric Spray, Steam & Dry Iron. It sprinkles as you iron; it steams; it does wash-and-wear; it's a handy dry iron. But that's not all! It even shows you when to add water! (See that ingenious Water Window!)

SECOND, you get a free can of Staley's Sta-Flo Spray Starch. Just spray and iron for a beautifully starched finish. But hurry! This offer is for a limited time only at your General Electric dealer's!

General Electric Company, Housewares Division, Bridgeport 2, Conn.

GENERAL ELECTRIC

Offer good only at these General Electric dealers:

Hawthorne Electric
375 Hamilton
Birmingham, Mich.

Withcock Household Appliances
23365 Woodward Ave.
Ferndale 20, Mich.

Bill Petruska & Son
27 S. Telegraph
Pontiac, Mich.

Hampton Electric
825 W. Huron St.
Pontiac, Mich.

Keasey Electric Co.
4620 Dixie Highway
Drayton Plains, Mich.

Clarkston Appliance
6 N. Main St.
Clarkston, Mich.

Gracious Living

with CUSTOM UPHOLSTERED FURNITURE

Expert styling, quality craftsmanship express your fine taste in home decor.

Let our experts help you make your choice. Choose from our large selection of fabrics and patterns.

QUALITY CARPETING by Bigelow, Magee and Wunda Weave. Our representatives will bring samples and frame catalog.

Elliotts OF WATERFORD

"Fine Furniture and Quality Carpeting since 1924"

5400 Dixie Highway Open Friday Evenings 'til 9 p.m. 334-0981

like fires

and burglars

and storms

and dogs!

But 1 Michigan Mutual Home-Gard Policy can protect you, financially, against those hazards.

Fire happens. Dogs bite people, and you can be sued. Storms and fire damage destroy homes and furnishings. Burglars break in and steal possessions. Homeowners can be faced with many unforeseeable losses that can be covered by Michigan Mutual Liability's Home-Gard policy... the newest in homeowners' protection. It covers scores of hazards and makes all-around protection easy to understand. Full facts and rates are as close as your phone.

SECURE THE FUTURE... INSURE WITH MICHIGAN MUTUAL

1600 NORTH WOODWARD AVENUE
PHONE 647-3700

MICHIGAN MUTUAL Liability Insurance

MUTUAL BUILDING • DETROIT 26 • FOUNDED 1912
Casualty And Fire Insurance For Car, Home and Business

COMMUTER'S MAP OF THE GRAND TRUNK

(SAVE FOR FUTURE REFERENCE)

MURON STREET	11:40* ROUND TRIP TO DETROIT
PONTIAC	INBOUND TRAINS 5:35 7:05 / 4:55 AM 4:18 PM
HEATED STATION	
FREE PARKING	
LONG LAKE	11:14* ROUND TRIP TO DETROIT
BLOOMFIELD HILLS	INBOUND TRAINS 6:43 7:13 / 7:53 AM
FREE PARKING	
CHARING CROSS	11:04* ROUND TRIP TO DETROIT
FREE PARKING	
EAST MAPLE	INBOUND TRAINS 6:46 7:15 / 7:55 AM
ROAD	
BIRMINGHAM	89 CENTS* ROUND TRIP TO DETROIT
HEATED STATION	
FREE PARKING	
WOODWARD AVE 4 BLOCKS	INBOUND TRAINS 6:51 7:20 8:00 AM 4:32 PM
MILE ROAD	
OAKWOOD BLVD.	75 CENTS* ROUND TRIP TO DETROIT
PARKING	
ELEVEN	INBOUND TRAINS 6:57 7:26 / 8:05 AM
MILE ROAD	
ROYAL OAK	68 CENTS* ROUND TRIP TO DETROIT
HEATED STATION	
FREE PARKING	
TELEPHONE	INBOUND TRAINS 7:01 7:31 / 8:09 AM 4:38 PM
ROAD	
PLEASANT RIDGE	64 CENTS* ROUND TRIP TO DETROIT
FREE PARKING	
NINE MILE	INBOUND TRAINS 7:04 7:34 / 8:12 AM
ROAD	
FERNDALE	58 CENTS* ROUND TRIP TO DETROIT
HEATED STATION	
PARKING	
WOODWARD AVE 4 BLOCKS	INBOUND TRAINS 7:08 7:38 / 8:14 AM
DAVISON	
HIGHLAND PARK	OUTBOUND TRAINS 5:12 5:42 PM
CHRYSLER CORP.	
EAST GRAND	
MILWAUKEE JUNCTION	OUTBOUND TRAINS 12:45, 4:55, 5:05, 5:35, 11:10 PM
HEATED STATION	
WOODWARD AVE 4 BLOCKS	DSR Shuttle Bus to GM Bldg. and New Center
ATWATER STREET	
DETROIT	
DSR Shuttle Bus Service Via Woodward and Griswold Avenues to Grand Circus Park	
HEATED STATION	
OUTBOUND TRAINS 12:35, 4:55, 5:25, 11:00 PM	
*Based on 46-ride monthly ticket	
FOR INFORMATION CALL YOUR LOCAL	
GRAND TRUNK	
WESTERN RAILROAD CO. TICKET AGENT	
Detroit 962-2260 • Royal Oak 12-1120	
Birmingham MI 4-7616	
Pontiac FE 5-8131 (night) FE 2-2011	