

# Movie Guide

Parenteen Committee  
Birmingham P.T.A. Council

MOVIE Green Sheet National Legion of Decency  
Becket A-MY A-3 recommended  
The Haunted Palace A-MY A-2

\* recommended as superior entertainment especially for children  
CODE GREEN SHEET  
These audience symbols are intended as broad guides to selection, and do not indicate either recommendation or non-recommendation of the films to which they are applied.

A Adults  
MY Mature Young People  
Y Young People (12 years to 16 years)  
C Children (unaccompanied by adults)  
NA General Audience  
NATIONAL LEGION OF DECENCY  
A-1 Morally Unobjectionable for General Patronage  
A-2 Morally Unobjectionable for Adults and Adolescents  
A-3 Morally Unobjectionable for Adults  
B Morally Unobjectionable in Part for All  
C Condemned  
SC A separate classification is given to certain films which, while not morally offensive in themselves, require some analysis and explanation as a protection to the uninformed against wrong interpretations and false conclusions.

You will find many bargains in  
The Eccentric Classified Columns.

## YOUR GARDEN CENTER

TWO THINGS TO HAPPEN ON  
SATURDAY, NOVEMBER 14th

1. You should start the PAPER WHITE NARCISSE in order for them to bloom and fill your home or someone else's home on CHRISTMAS DAY with fragrance and beauty.

2. SECOND SATURDAY PARTY  
Fathers & Mothers, Aunts & Uncles,  
Grandparents, Children & Kids  
APPLE CIDER  
DO-NUT HOLES  
APPLES  
CANDY  
A FUN "SHOP and SHUDDER" DAY

3. TWO SPECIAL SALES CONTINUE!!

a) All spring flowering bulbs are  
1/2 OFF LIST PRICE  
b) A wide variety of odd items are being picked up by sharp customers at  
1/2 TO 3/4 OFF LIST PRICE

4. Mulching (after the ground is frozen 2" deep) is about the best winter protection for roses, perennials, evergreens, spring bulbs, young shrubs & trees. It retards evaporation of moisture from the soil and prevents the most damaging effects of alternate thawing and freezing in the late winter.

BEST MATERIALS:—  
MARSH HAY  
STRAW  
BUCKWHEAT HULLS  
ROSE COLLARS  
VERMICULATE  
PEAT MOSS  
BROADLEAF EVERGREENS and NEEDLE TREES should also be sprayed with FOLI-GARD, an ANTI-DESSICANT.  
P.S. Foli-Gard is also an excellent preservative for Christmas trees, holiday greens, flower bouquets & gourds. It reduces needle drop and prolongs forest-fresh quality.

5. DECORATION MATERIALS & EQUIPMENT for making Della Robbia & cone wreaths, and table and mantel pieces.  
RINGS, WIRE, FLORAL TAPE, SHEARS, FRUIT CONES, FLOWERS, STICK-UM, RIBBON, TURKIES, QUAIL, PHEASANTS, et cetera.

6. Our first shipment of  
JIMBO'S JUMBO PEANUTS  
has been received!  
These shelled peanuts with their skins on are the toast of the party when toasted.  
7. RE-CIRCULATING WATER PUMPS for fountains MUST BE BROUGHT INDOORS before they freeze and burst.  
8. RETURNS are SLOW coming in—and we don't mean election votes.  
We do mean the:—  
CYCLONE FERTILIZER SPREADERS  
CYCLONE GRASS SEED SPREADERS  
ROSS ROOT FEEDERS  
which we loaned to you and probably delivered free of charge.  
We miss them very much.

"Sad Sack"

**McCLELLAN-BALL CO.**  
Everything for the Yard and Garden  
850 S. WOODWARD, BIRMINGHAM, MICH.  
FREE AREA DELIVERY Midweek 4-6193

## Bridge In Birmingham

By BUD MAYBAUM  
RUTH MICHAEL  
Bridge Association

At a recent Birmingham tournament, one of the players asked me if it wasn't the boob-boys of the defense that aided the offensive pairs to make these top boards. I agreed that it sure helped but wasn't the most determining item of these good scores.  
My hand for today was played recently in Birmingham, and of the eight pairs who played the hand, six of them passed out the board. Grace Miller did open the hand third seat and may have tied the board for tops except that she gave the defense a chance to make her a gift of some tricks.  
Neither Vulnerable: Dealer is South.

NORTH (Joan Distler)  
K 10 7  
Q 10 5 3 2  
J 5  
A Q 6 2  
WEST EAST  
Q 4 A 9 6  
K J 4 A 9 7  
Q J 7 2 Q 10 3  
10 9 8 7 5 4 3  
(Dealer) SOUTH (Grace Miller)  
A 8 5 3 2  
Q 4 6  
K 7 4  
J K

The bidding:  
SOUTH WEST NORTH EAST  
pass pass 1 pass  
1 all pass

Opening lead: 10  
Most players didn't like opening third hand with 10 points, but I must say that I do approve this bid, nonvulnerable with seven cards in the majors. Grace and Joan were playing the convention "Drury," and Joan was only too happy to pass out this one bid.

GRACE ALLOWED the 10 of clubs lead to come to her closed hand and wanted to boast of the club strength and have the opposition lead something else. On trick two, Grace led the small trump and hooked the 10, which East took with the ace.  
East switched to the seven of hearts, and Grace played low from her hand and the jack was the winner. East was afraid to lead from the king the four of hearts and remembered the three of clubs on the first trick, so he switched to the ace of diamonds. When his partner played the trey, he switched back to a club.

At this point it was easy for Grace to win the club with the king, ruff the diamond, pick up the queen of spades and discard on the two high clubs.

RECENT WINNERS in Birmingham Tournaments include Shirley Grosberg and Sybil Robinson, Doris Thompson and Greta Shepherd, Claudia Seaton and Sallie Simmons, Ruth Guild and Magda Gould, Edna Canfield and Betty Ladewig, Steve Taylor and Bob Scott.  
Grace and Jack Stone, Tom Patton and Walter Leuchter, Jim Crab and Hilda Murphy, Mae Esch and Ollie Swarzewider, Ralph Tyson and Dick Loving, Dottie and Harold Sandeman, Ann and Paul Van Rookel, Clarence and Bud Maybaum.

Phyllis Malstrom and Jeanne Gaskill, Iva Benjamin and Frank Allen, Bruce Coryell and Stan Kaufman, Marje and Paul Potter, Virginia and Pat Patton, Leonard White and George Steining and Helen Barardini and M. E. Herman.  
DON'T FORGET the national charity game at The Community House, Birmingham, Friday evening, Nov. 27. Still have some top life-masters you may obtain for a partner in this game if you desire. Call Ed Clarke or me for such a partner.

Other close-by tournaments of interest are the Toledo sectional Nov. 13 through 15 and the Lansing Sectional, the following week end. I have attended both these tournaments in the past and can highly recommend them.

## ART FOR ART'S SAKE

# Abstract Painting Explained As Method, Not A Movement

Many people remain resentfully suspicious of abstract art and assume that if they wait long enough this movement will just fade away. Since abstract art shows little sign of diminishing, I keep an eye out for short books or univolved explanations of abstract to comfort the unbelievers.  
Such a book, "Abstract Art," by Fredrick Gore, is available at the publications desk of the Detroit Institute of Arts (Crown Publishers).

Primarily, Gore points out that abstract is a method of representation rather than a movement in art. Abstract means to simplify, reduce to the essence.  
"There has always been some form of two-dimensional abstract art... to ornament buildings, clothing or household goods," begins the little book. Gore traces abstraction from its earliest symbols to its use by widely differing artists today. Realistic painters use a sort of underlying abstract skeleton in their

works. It is the technical means by which the painting becomes a successful balanced whole.  
Some painters like Picasso and Braque use abstraction to simplify or distort natural forms "to show the objects in their paintings who is master."

WASSILY Kandinsky and Piet Mondrian are the recognized leaders of the 20th century plunge into totally abstract painting. Kandinsky believed that colors and lines could be orchestrated in a way similar to music. He discovered that the painting was more important than the things painted. Kandinsky believed that the artist has absolute freedom limited by an inner necessity which depends on something in the artist that demands to be expressed (personality) in the spirit of his age (style) and the service of art itself.  
Mondrian abandoned any pretense of natural form altogether to develop his supremely abstract lines and rectangles in elementary colors. His work was based on the power of abstract art to provoke simultaneous images while itself representing nothing.

gun to take on an almost magical significance (fulfilling a destiny implied in tradition). During the last two decades, painters have branched in many directions to attempt to give a work of art its own reality.  
This brief book with 24 color illustrations reveals the breadth, scope and directions of abstraction. In so doing, it also demonstrates why it is difficult to give a simple definition of abstract art. It is a different thing to each painter.  
As Kandinsky says, "There are no general academic rules, since each work will have its own laws." Where does that leave you? You just have to learn to feel what abstract paintings have to say.



Mrs. Hall

ABSTRACT paintings have be-



Margaret Grazier

## B'ham Youth Plays In Opening Concert

Tom Graham of Birmingham is a member of the Kalamazoo Junior Symphony Orchestra which will present its first concert of the 20th season at 4 p.m. Sunday at C.H.S. Auditorium in Kalamazoo.  
One of the oldest youth orchestras in the nation, the symphony is conducted by Julius Stalberg and will feature trumpeter Henry Buehling and pianist David Worth as soloists.

## Visits Washington

Margaret Grazier, Groves High School librarian, is one of six secondary librarians who went to Washington Nov. 5-7 at the invitation of the United States Office of Education to help plan seminars and institutes on library science which will be sponsored around the country.

## GRACE AND CHARM . . .

so unusual to find in a ranch home, but here from the bowed window in the step-down living room to the warmth of the paneled family room, everything bespeaks gracious and easy living.

You'll like, too, the

- 3 twin size bedrooms
- 2 1/2 ceramic baths deluxe
- Separate breakfast room
- Full dining room
- Full basement
- Huge slate foyer
- Gas heat
- Oversize plastered garage

There's much more like carpets and drapes and kitchen built-ins and it's vacant, so come see it today.

Real value at **\$37,600**

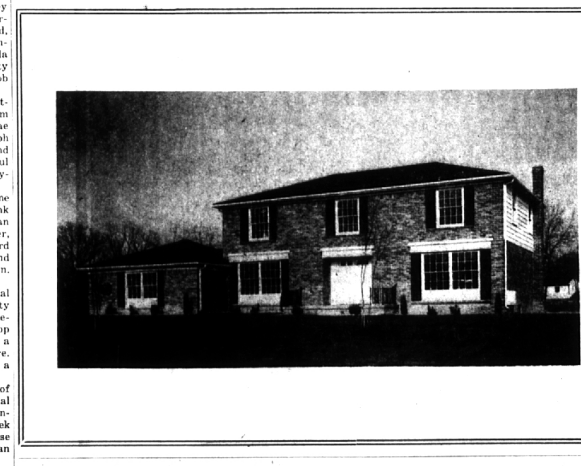
2420 Cheswick Drive

Lighting your way to better living

## BENJAMIN & BISHOP, INC.

259 S. Woodward, Birmingham, Michigan MI 4-3232 — JO 4-5728

## Better Homes and Gardens Award Home



NEW Provincial Center Ent. Colonial in the City of Bloomfield Hills. Large Elegant foyer, carpeted Den; Panellled Family Room with parquet floors. Spacious Kitchen with Frigidaire Blt. ins. Walk in Pantry. 3 Large Bedrooms (one has connecting bath) Plus Master Bedroom with Fireplace, Triple closets. \$44,900. Price includes Landscaping. Open daily 1-5 except Thursday. 2360 Hunt Club Drive, Bloomfield Hills, Long Lake Road, 1 mile E. of Woodward, Adjacent to Bloomfield Open Hunt Club.

Call Margaret M. Richards  
644-3817 and 644-0260

## Ron Coden Back At Raven Gallery

Detroit-born Ron Coden, who now lives in Oak Park, opened a two-week engagement Tuesday at The Raven Gallery, 136 Brownell, Birmingham.

The folk performer has his own CKLW-FM radio program on Saturday nights and also has appeared on many Detroit-area shows.

HE IS IN his third year at Wayne State University and plans to indelustrate new methods of teaching history by relating to his students facts concerning the past via the folk song.

Coden last appeared at The Raven in September, following Josh White. His current engagement runs through Nov. 22, and nightly showtime is 8:30.

**To Auction Coins**  
The Birmingham-Bloomfield Coin Club will hold a coin auction at 8 p.m. Wednesday at The Community House, Bates and Townsend, Birmingham.

Bernat, Etter & Van Maaren, inc. Realtors

PHONE 644-3500 for additional information 360 HAMILTON, BIRMINGHAM, MICHIGAN 48011

## ★ ★ 3 Bedroom Ranch ★ ★

CLOSE TO LAHSER ROAD

<p><b>BASEMENT</b></p> <p>2 BATHS and LAVATORY</p> <p>BUILT-IN RANGE—2 OVENS</p> <p>SLATE FOYER</p>	<p><b>FAMILY ROOM—</b></p> <p>PLUS REC. ROOM</p> <p>LARGE PATIO</p> <p>CIRCULAR DRIVE</p> <p>ON PLEASANT COURT</p>
---	--

ONLY \$37,400.00

SEE DON WHITFIELD  
MI 6-3783