



FOR LEASE
5,500 sq. ft. industrial space in new building under construction in Birmingham Airport Industrial Subdivision at Maple and Coolidge. Will finish to your specs with room for expansion. Occupancy September 1, 1964.
Simone & Co. 273-8300

OPEN HOUSE
CLARKSTON HUNT CLUB ESTATES
A New Idea In Suburban Living FOR HORSE LOVERS

Beautiful large home on 3 1/2-acres complete with 24x32 barn, corral, American riding horse and over one-mile bridal path.

- 3 large bedrooms
- 2 1/2-car garage
- Spacious living room
- Big kitchen with built-ins
- 1 1/2 baths
- Step down family room with fireplace
- Full basement

A comfortable happy home, rather than just another house.

Other Models Available on Scenic 3 1/2 and 5 Acre Sites.

Take I-75 to the Clarkston Division Exit, go North 3 Miles then turn Left at Oak Hill Road for 1 1/2 Miles. For more information Call Collect . . .

C. PANGUS, INC. **Ortonville**
630 S. M-15 NA 7-2815
OPEN 7 DAYS



BASIC FOODS ARE THEME OF HOMEMAKING MURAL.
Painters are (from left) Mary Leversuch, Kay Montgomery and Sue Cabral.

Student Art Sparks Homemaking Classroom

East Hills students who want to grow, and live each day with lots of enthusiasm and energy, get the message from the homemaking room wall.
Student participation in school government has always been traditional at East Hills; now, student art work is becoming an integral part of building decor.
Miss. Van Ryzin, East Hills Junior High School's homemaking teacher, and Jay Jodway, art teacher combined planning efforts with the art talents of three ninth graders: Kay Montgomery, Sue Cabral and Mary Leversuch.
Using tempera paint and a design idea from the U. S. Department of Agriculture, the girls painted the basic foods in triple size on the concrete-block wall of the homemaking room.

Michigan 14H Clubs boast more than 40 project areas in home economics, agriculture and related areas for their 74,500 members.

Beef Entree Recipe Comes From Jamaica

In the mood to try something different? The Community House (Hates and Townsend in Birmingham) offers this unusual recipe for a fall feast in your menu planning.
The recipe is a favorite in the Caribbean, and tropical breezes carry the pleasant aroma from this spicy entree throughout the islands.
Jamaican Beef Roast is one of the dishes being featured on the pre-film dinner menu Friday and Saturday at the Community House in connection with the Travel Film Series, "Flying over the Caribbean" is the all-color film being shown.

THE DINNERS and films are open to the public, and further information may be obtained by calling The Community House.

- "JAMAICAN BEEF ROAST"**
1 lb. top round or sirloin, cut 1 1/2 inches thick
2 teaspoons salt
1 teaspoon pepper
2 cloves garlic, minced
1/2 teaspoon thyme
1/2 teaspoon mace
2 teaspoon nutmeg
2 tablespoons chopped parsley
3 onions, sliced
2 tomatoes, chopped
1/4 cup vinegar
2 tablespoons butter
1/2 cup boiling water
Wash and dry the meat. Combine the salt, pepper, garlic, thyme, mace and nutmeg. Rub into the meat thoroughly. Place the meat in a bowl and add the parsley, onions, tomatoes and vinegar; mix well.

COVER AND marinate for two hours. Remove the meat, reserving the marinade. Melt the butter in a saucepan. Brown the meat well over high heat. Reduce heat and add the boiling water and the reserved marinade.
Cover and cook over low heat for one hour, or until the meat is tender.

Highlights Lunch
A little bit of crumbled American blue cheese added to a tuna fish salad will add new highlights to children's lunch box sandwiches.

B'ham Architects To Create Center For Grand Haven

Jickling and Lyman, architects, 148 Pierce, Birmingham, have been commissioned to design a new library and cultural center for Grand Haven.
The firm was selected from a total of 12 interviewed for the project. Library consultants are Ralph A. Ulveling and Charles M. Morhardt, director and associate director, respectively, of the Detroit Public Library.
The firm is currently engaged in work for the University of Michigan, Eastern Michigan University and the Chrysler Corporation.

Coffee for Cleaning

To clean a vacuum bottle thoroughly and safely, nothing is better than a tablespoon of coffee grounds swished about in the bottle. It cuts any milk film and leaves the inside of the bottle sparkling.



Movie Guide

Parenteen Committee
Birmingham P.T.A. Council
Green Sheet National Legion of Decency

MOVIE	Green Sheet National Legion of Decency	CODE	GREEN SHEET
Kitten with a Whip	A	B	
The Killers	A	A-3	
The Haunted Palace	A	A-2	
Moon-Spinners	G	A-1	
Miracle of the White Staircase	GA	A-1	

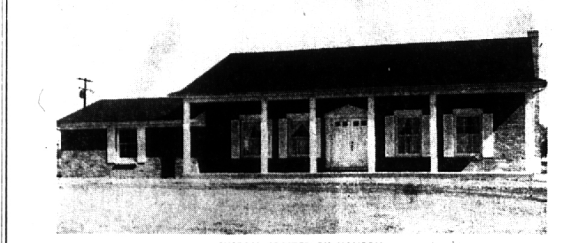
* recommended as superior entertainment especially for children
CODE
GREEN SHEET
These audience symbols are intended as broad guides to selection, and do not indicate either recommendation or non-recommendation of the films to which they are applied.
A Adults
MY Mature Young People
Y Young People (12 years to 16 years)
C Children (unaccompanied by adults)
GA General Audience
NATIONAL LEGION OF DECENCY
A-1 Morally Unobjectionable for General Patronage
A-2 Morally Unobjectionable for Adults and Adolescents
A-3 Morally Unobjectionable for Adults
B Morally Objectionable in Part for All
C Condemned
SC A separate classification is given to certain films which, while not morally offensive in themselves, require some analysis and explanation as a protection to the uninformed against wrong interpretations and false conclusions.



ANNOUNCING Williamsburg
BLOOMFIELD'S NEWEST SUBDIVISION WITH WATER, SEWER, GAS and PAVED ROADS.
COLONIALS—SPLIT LEVELS—RANCHES
Priced From **\$40,900** On Estate-Size Lots with Rolling Terrain

COLEMAN & MOSS Builders
OFFICE: 647-1998 Developers of Distinctive Subdivisions MODEL: 646-2586 or 626-0149

SEE THE MAGNIFICENT NEW "MT. VERNON"



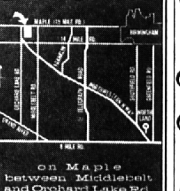
CUSTOM CRAFTED BY HANSON
This truly elegant Early American Home boasts nearly 2,400 square feet of deluxe living area. You will admire the smart floor plan with 9 large rooms centered around a spacious center entrance foyer with a magnificent open staircase. Drive out this weekend and inspect this beauty. You will be impressed by the custom craftsmanship found only in Homes by Hanson.

CUSTOM FEATURES:
4 Master Size Bedrooms, First Floor Den (or 5th Bedroom), 2 1/2 Deluxe Baths, Formal Dining Room, Gully Convenience Planned Kitchen with RCA Whirlpool Built-In Gas Oven and Range, Waste Disposer, Purifon Electronic Hood and Fan - Paneled Family Room Room with Beam Ceiling and a Handsome Natural Fireplace, Bath Vanities with Formica Tops - Select Oak Flooring - Insulated Walls and Ceilings - 40-Gallon Glass-Lined Water Heater - Fruitwood Cabinets - Modern Gas Fired Hydronic Heat - Quality Wood Windows Throughout - First Floor Laundry and Mud Room-Expansive Closets and Storage Areas.
WE WILL BUILD ON YOUR LOT OR OURS.
Model located in beautiful Glenmore Estates, 1/4 mile east of Crooks road on Square Lake Road (19 Mile).

4940 ROCHESTER ROAD TROY MI 48063
SALES BY **Ladd's REALTOR**
Open Weekdays except Thursday, 2 p.m. to 6 p.m. Sunday 12 to 7 p.m. or by appointment.
LI 1-1140 MU 9-1116

ALL THE WORLD ...
... looks better from a window ...
in *Overbrook**
MAX BROOCK INC.
MI 4-6700
*Paved roads, water, sewer, underground utilities

Everything is going on at *Woodcrest North*
Located in the Bloomfield Area
Everything you want in a home at a price you can afford - Colonials and Tri-Levels
Special
Art Exhibition by the esteemed Michigan Artist **WINIFRED KLARIN**
Open Daily and Sunday 1 PM-8 PM
Closed Thursday
Model Phone 626-0372

Calendar of Cultural Events

- Thurs., Nov. 5**
BRIDGE - Birmingham Duplicate Bridge Club at 7:15 p.m. at Birmingham YMCA.
ARMY-HAIR TRAVELERS - Ralph Lomis shows films of African safari at 8:15 p.m. at Village Woman's Club, Bloomfield Hills. Admission charge.
CRANBROOK ACADEMY OF ART - "Impact - Source Detroit" exhibition of contemporary paintings from three Detroit galleries at Cranbrook Art Galleries, Cranbrook Hills. Through Sunday. Hours: 2-5 p.m. Tues.-Fri. and 1-5 p.m. Sat.-Sun. except for major holidays. In Bloomfield Hills. Admission charge.
OU ART GALLERY - Bronze sculpture by Morris Brose at Oakland University, Rochester. Hours 12 to 4:30 p.m. Mon.-Fri. and 2-5 p.m. Sun. Through Nov. 16.
RAVEN GALLERY - The Tripjacks, folk singers, at 9:30 p.m. at The Raven, Birmingham. Through Sunday. Admission charge.
STUDIO OF FINE ART - Original wood block prints by internationally famous Japanese artists. At Jacobson's Birmingham. Hours 9:30 a.m.-5:30 p.m. daily; Thurs.-Fri. open till 9 p.m. Through Nov. 14.
BIRMINGHAM THEATRE - "The Moon-Spinners" with Hayley Mills, Peter McEnery and Eli Wallach, plus "Miracle of the White Staircase" through Tuesday.
BLOOMFIELD THEATRE - Ann-Margaret and Peter Brown in "Kitten with a Whip." Also, "The Killers." Through Tuesday.
Fri., Nov. 6
TRAVEL FILM SERIES - Robert Auburn narrates his color films on "Flying over the Caribbean" at 8 p.m. today and Saturday at The Community House, Birmingham. Admission charge.
OU CONCERT - LECTURE SERIES - Robert Creeley, poet, is guest at 8:15 p.m. at Little Theatre, Oakland University, Rochester. Admission charge.
Sat., Nov. 7
AAUW CHILDREN'S THEATRE - "The Nuremberg Stove" presented by Theatre group of American Association of University Women, Birmingham Branch, at 10 a.m. and 1 p.m. in the Birmingham Theatre. Admission charge.
Sun., Nov. 8
BLOOMFIELD ART ASSOCIATION - Birmingham Society of Women Painters in annual exhibition Reception 2-5 p.m. today. Hours 2-5 p.m. daily except Mon. through Dec. 5 at Birmingham Art Center.
BRIDGE - Community House Duplicate Bridge Club at 7:15 p.m. at 580 S. Bates, Birmingham.
Tues., Nov. 10
BRIDGE - Birmingham Duplicate Bridge Club at 12:30 p.m. in home of Mrs. Stuart Murphy, 241 Manchester, Birmingham.
AMERICAN FIELD SERVICE - Metropolitan Detroit Board of AFM meets at 11 a.m. at home of Mrs. Archie P. Thalacker, 270 Lowell Court, Bloomfield Hills.
Wed., Nov. 11
BRIDGE - Birmingham-Bloomfield Area Bridge Club at 7:45 p.m. at Birmingham YMCA.
FRANKLIN VILLAGE PLAYERS - Noel Coward's "Billie Sunday" is performed at 8:30 p.m. at Farmington Players' Barn. Through Nov. 11. Admission charge.
Thurs., Nov. 12
CHAM TOWN HALL - Elie Abel, NW foreign affairs commentator, is speaker at 11 a.m. today and Friday in the Birmingham Theatre. Admission by season ticket only.
BRIDGE - Birmingham Duplicate Bridge Club at 7:15 p.m. at Birmingham YMCA.
Fri., Nov. 13
BLOOMFIELD ART ASSOCIATION - "Contemporary American Painting" lecture with slides by Robert L. Kinsey at Detroit Institute of Arts, at 8:30 p.m. at Birmingham Art Center, 1516 S. Cranbrook. Admission charge to non-members.
KENNETH JEWELL CHORALE - In Birmingham Musicale Scholarship Benefit Concert at 8:30 p.m. at Kingswood School Cranbrook auditorium, Bloomfield Hills. Admission charge.
COMBO CLASH - Birmingham Exchange Club sponsors teen-age band competition at 8 p.m. at Seaholm High School gymnasium. Admission charge.
Sat., Nov. 14
DE CORMIER FOLK SINGERS - On Oakland University-Community Arts Council concert series at 8:15 p.m. at Pontiac Northern High School auditorium. Admission charge.