

Seminar Is Slated For Accountants

A seminar for accountants sponsored by the American Society of Women Accountants, Detroit Chapter No. 5, and the Oakland University Division of Continuing Education will be held at the University from 9 a.m.-3:30 p.m. Saturday, Nov. 14.

Speakers for the professional development seminar will be Gilbert C. Gallivan, assistant director, Pension Social Security Office; Dr. Douglas L. White of the Livonia Public Schools and Henry Ford

Community College; and Dr. Marie E. Dunke, CPA of Central Michigan University.

For registration or information, area residents may contact the Division of Continuing Education, Oakland University, Rochester.

The National Institute of Archeology in Lima, Peru, has revealed the discovery of an Inca city four times larger than the remarkable ruins at Machu Picchu in southern Peru. The 74-acre site is believed to be the fabled city of Vilcabamba, the last great capital of the Incas, lost since 1572.

Dishes Get Cleaner...
Drier too in a...



KitchenAid.

Built-in Superba VariCycle...the Professional Dishwasher/Dryer

This is the dishwasher that's designed and built to professional standards based on 70 years of dishwashing experience. It's made by Hobart, the company that builds dishwashing equipment for leading hotels, restaurants and hospitals.



- Push-button Cycle Selection
- Rinse and Hold—Full Cycle—Utility and Utensil
- Vari-Fronts to match your kitchen decor
- Exclusive Guide-Action wash eliminates hand-rinsing
- Safe, thorough drying with Flo-Thru sanitized air
- Automatic Rinse Agent Dispenser helps dry dishes spot-free
- Durable Porcelain Interior
- King-Size Capacity with fold down dividers in 2-position top rack

3 sizes to choose from...3 price levels

Compare and you'll buy the best...

KitchenAid DISHWASHERS

FREE ESTIMATES

UP TO 36 MONTHS TO PAY

MILKS APPLIANCES

MAIN STORE
Open 9 A.M. to 9 P.M. Daily
4800 SOUTH WOODWARD
4 Blocks North of I-59
MI 61-1306
BIRMINGHAM

WAREHOUSE STORE
Open 9 A.M. to 7 P.M. Daily
2416 WEST 14-MILE ROAD
EE 9-2692
ROYAL OAK

ART FOR ART'S SAKE

By CAROLYN HALL
Special Writer

Potters on Scene At Detroit Show

The Detroit Artist's Market opens its blue door this month to the public for viewing the Michigan Potters' Show.

No one was surprised to see that J. T. Abernathy's ceramic table, John Glick's mugs and Jean Hagen's clay "baskets" won the top awards. They deserve it. Equally well-known potters William Pitney, Mark Hanson, Murray Douglas and Hiroko Oba were represented with impressive pieces. Pitney's plate fairly takes your breath away with its precise control and dramatic flair.

The show fills the main floor of the Artist's Market. The pots are delightfully displayed on slabs of tree trunk rounds, low tables and large flat saucel boxes. The upper balcony shows the works of gallery regulars.

The Detroit Artists Market makes it a point to keep a supply of paintings, ceramics and crafts on hand so that patrons will have a selection even while a one-man or group show like the Potters Guild or the Michigan Water Color Society Show is hung in the main gallery.

The unique gallery, in its 30th year in downtown Detroit, The present location on tiny Harmonie Park just east of Hudson's has furnished the nucleus of an art center as Hanamura's Gallery, the Madison Art Gallery and Adler-Schnee have clustered close around.

THIS NON-PROFIT gallery shows exclusively the works of Detroit-area artists and craftsmen (including Birmingham, Ann Arbor, etc.)

It's a good place for a beginning exhibitor to show since the gallery is traditionally sympathetic to them.

Artists bring their works in for the Tuesday once-a-month juries. There is a lay jury composed of 35 women with an art background and an interest in learning more. This screening is followed by a professional group headed by William Peck from the Art Museum.

They choose works of an interest

ingly higher level (as more artists produce better things). Quality and saleability are their main aims in selection.

HOWEVER, the primary purpose of the gallery was and still is to give local artists a place to show and sell their works. The Artist's Market, embodied in gallery comanagers Mrs. Kirkland Alexander and Margaret Conzel-

man, is warmly sympathetic to the artist.

Miss Conzelman reports to the artists with pleasure how many things were accepted by the jury or how much has sold or who bought it. All points that justify an artist's faith in himself.

Her face shows an unfeigned sympathy when she must report things not accepted and mentions reasons why the jury did not choose the works.

PROSPECTIVE buyers are pleased with the earnest bits of information Miss Conzelman unfolds describing the artists' abilities, techniques and accomplishments. Her pride in the artists, modestly tempered, represents the Artist's Markets mother-hen wings flutter-

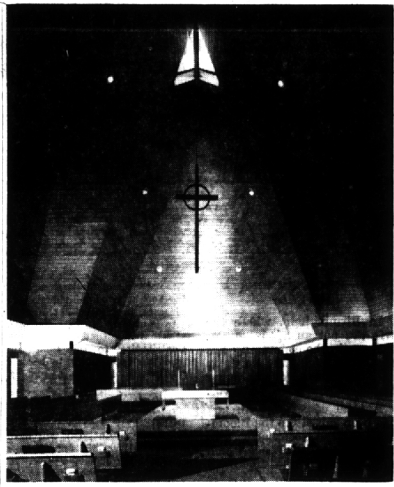
ing protectively over its brood of busy artists.

The artists themselves may not feel exactly like baby chicks but they do respect the integrity of the market and the opportunities it affords them.

The Detroit Artist's Market is run, staffed and financed by volunteers exceeding the gallery managers. Classed somewhere between a public art gallery and a private commercial one, the Artist's Market is a pace-setter in its quality of shows.

Don't miss the Potters Show, the Christmas group show and each monthly show after that.

The best bargains in town are sold through Eccentric Want Ads.



WINNING DESIGN BY LINN SMITH & ASSOCIATES
Chapel for Presbyterian church in Rochester

Detroit AIA Awards Center on B'ham Area

The Birmingham-Bloomfield area has figured in all four winners of the 1964 Honor Awards Program, brought an award of merit to Detroit Chapter, American Institute of Architects.

Awards were made by Philip J. Meathie, president, at the chapter's recent annual meeting in Berkeley. A first honor award went to Linn Smith & Associates, Inc., Birmingham, for the chapel for the University Presbyterian Church in Rochester. Plaques were presented to Linn Smith, FAIA and to Herbert Stoutenberg, chairman of the church's building committee.

THREE AWARDS of merit were given—two for buildings in Bloomfield Hills.

The first went to Tarapata-Malton Associates, Inc., Bloomfield Hills, for the residence of Mr. and Mrs. William B. Rachman, Jr. of Bloomfield Hills. Mark Jarosow, 30% partner-in-charge, and Mrs. Rachman accepted the award plaques.

The Bloomfield Hills Branch of the Manufacturer's National Bank brought an award of merit to Louis G. Redstone Architects, Inc., Detroit.

Redstone received the plaque for his firm. Representing Manufacturer's National Bank were Robert F. Hastings, FAIA, president of Smith, Hinchman & Grylls Associates, Inc., received the award for his firm and for Minora Yamasaki & Associates of Birmingham for the Michigan Consolidated Gas Co.'s building, One Woodward Ave., Detroit. Ford Kennedy, manager, Real Estate Department, accepted the plaque for the Gas Co.

The four winners were selected from among 10 entries submitted by 22 firms in the area. Judging took place in Philadelphia with J. Loy Carroll, Jr., FAIA, Vincent Kling, FAIA and Robert Goides, AIA, serving as jurors.



TOWERING TREES

"In-town" location with all city conveniences. Center hall gives perfect traffic pattern. Completely carpeted and draped. 3 bedrooms and den or 4 bedrooms, 2 baths, excellent rec. room, hot water heat. An unusually large well-planned kitchen adjacent to glassed and screened porch.

If you are tired of production construction and will enjoy a home where every detail is perfection. See This! Priced at \$39,900 for immediate sale. Ask for Alice Rutten.

CHARLES J.

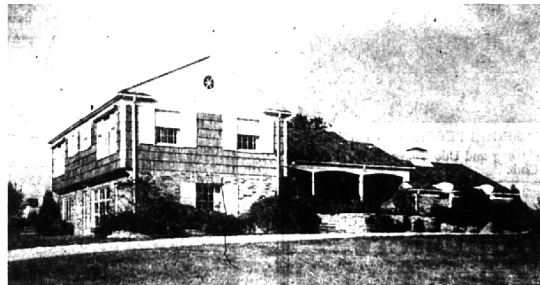
VAN HORN INC.

From Birmingham MI 6-2400
576 N. Woodward Ave.

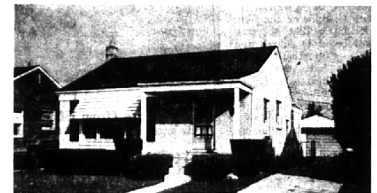
From Detroit JO 4-5644
Birmingham



IMAGINE! Quarton Lake Estates location for only \$30,500. This newly decorated three bedroom home could be remodelled to a four bedroom for a small amount. May we show you how? Dining room and great recreation room with bar. Huge porch. ONE BLOCK to school!



BETTER CHECK into this BLOOMFIELD HILLS Home near Cranbrook. You'll regret it if you don't. Four large bedrooms, two bathrooms and two lavs. Exceptionally large family room. Kitchen with built-in oven and range. Carpeting and draperies included. Lovely interior. A JOY TO SHOW!



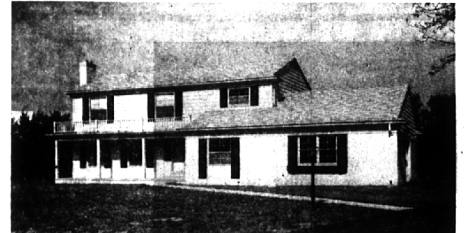
EASY FHA TERMS AVAILABLE and Quick possession. Owners are transferred. Three bedrooms and 1 1/2 bathrooms. Full basement with space for recreation room. Carpeting included. Excellent condition. Walk to Eton park. Don't wait—it won't last—only \$15,650.



OPPORTUNITY KNOCKS BUT ONCE! Near Bloomfield Hills Country Club with four twin sized bedrooms and 3 1/2 bathrooms. Dining room, huge family room and screened porch that could easily be enclosed and heated. Kitchen with built-ins. Quality home with many extras including Hi-Fi. Immediate possession. \$59,500.



IN BACK OF OAKLAND HILLS COUNTRY CLUB on beautiful winding road—just seconds away from St. Regis School and new shopping area. Three bedrooms and 2 1/2 baths. Full dining room and oak paneled family room with second fireplace. Extras include carpeting, draperies, automatic garage door opener, fire alarm system and built-in oven and range. Huge patio. \$39,500. That's right—no mistake!



OUTSTANDING VALUE in this new four bedroom with EVERYTHING! Superb built-in kitchen. 22 foot family room, library, dining room and screened porch. Fully air-conditioned. AM-FM inter-com. Luxury of automatic garage door opener. Court location—Immediate possession. \$52,500

Weir, Manuel, Snyder & Ranke, Inc.

298 South Woodward
Birmingham, Michigan Realtors

Birmingham 644-6300
Phones: From Detroit 566-2323