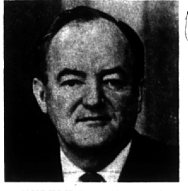


WINNER OF 11 STATE AND NATIONAL AWARDS FOR WEEKLY NEWSPAPERS IN 1964



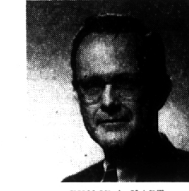
LYNDON B. JOHNSON  
President



HUBERT H. HUMPHREY  
Vice President



GEORGE W. ROMNEY  
Governor



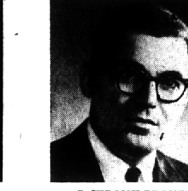
PHILIP A. HART  
U.S. Senator



WILLIAM P. HAMPTON  
State Rep., 65th



WILLIAM S. BLOOMFIELD  
Congressman, 18th



S. JEROME BRONSON  
Prosecuting Attorney

# Oakland County Joins Johnson Landslide

## Johnson Victory Cuts Into Republican Area

By DAVE PHILPO  
Township Editor

Birmingham. Bloomfield area voters contributed significantly to the landslide victory of President Lyndon B. Johnson in Tuesday's election.

The President and his running mate, Hubert H. Humphrey, cut sharply into an area that has been traditionally Republican for more than a century.

In seven communities served by The Eccentric—Birmingham, Bloomfield Hills, Bloomfield Township, West Bloomfield Township, Southfield Township, the City of Southfield and Troy—the President received 53,163 votes.

The Republican candidate, Barry Goldwater and William Miller, captured 33,498 votes, a margin of only 4,355.

PRESIDENT Johnson's popularity, or the lack of appeal by Senator Goldwater, did not hinder Gov. George Romney, however, who was re-elected by a statewide margin of almost 300,000 votes over Cong. Neil Staebler.

In all the communities, Mr. Johnson ran well ahead of the percentages posted by John F. Kennedy in the 1960 election.

Some residents did not bother to vote for the office of president at all.

Take Birmingham, for example. Of the total vote of 15,772, only 13,629 voted for either of the candidates, leaving 143 persons who did not make an "X" in the presidential column.

IN THE gubernatorial contest, 232 persons did not vote.

Johnson ran 17 per cent better

in Birmingham than Kennedy in 1960. He picked up 38 per cent of the total vote as compared to 21 per cent for Kennedy four years ago.

Gov. Romney outpollled Staebler in the city by almost 13 to 1.

The President's appeal to the middle and upper-middle class voters was demonstrated in Bloomfield Hills, which gave Kennedy only 14 per cent of its total vote in 1960.

Johnson on Tuesday took over 515 to 1,019.

## Republicans Victorious in 2 Townships

With the exception of two seats on the library board, West Bloomfield Republicans without a determined onslaught Tuesday by Democrats, who were on the ballot locally for the first time.

Supervisor John C. Rehard was defeated to a third term, despite a spirited challenge by Democrat John H. Duberly. The final vote was Rehard, 3,557; Duberly, 2,059.

Clark Douglas, M. Chamberlain defeated her Democratic opponent, Mrs. Georgia M. Timpane, 4,135 to 1,985. Mrs. Lillian S. Warner was unopposed for re-election as treasurer and received 4,213 votes.

Emmett DeConick, a trustee since 1945, and John F. Warren, a member of the township board for the last six years, were returned to office. DeConick received 3,703 votes and Warren, 3,705.

THE TWO Democratic candidates for trustee—John A. Marble and John V. Nabahedlian—captured 2,348 and 2,146 votes, respectively.

Incumbent justice of the peace Elmer C. Dieterle bested his Democratic opponent, Frederick O. Exadaktylos, 3,616 to 2,468.

Republican Joseph D. Nephew won the post of constable over Lee Brooks, 3,777 to 2,900.

In a three-party race for two 6-year terms on the township library board, the Democrats and Republicans each elected one.

Republican Helene H. Freund led with 3,472; Democrat Betty A. Meyer had second with 2,575; Joyce L. Kaplan, a Democrat, ran third with 2,224; and Carol H. Sader of the Citizens Party was fourth with 1,111 votes.

FOR A FOUR-YEAR term on the Board of Director Zell H. French (See VICTORIOUS, Page 4-A)

## AN EDITORIAL It Was a Negative Election

It is with both disbelief and a sigh of relief that we note that the election of 1964 is now history.

We are sure that many of our readers are both shocked and disappointed with the results of the election. About the only solace that can be found for local Republicans is Gov. George Romney's striking victory in the face of a presidential landslide.

As we look back, this has been a negative election.

One marred with personal attacks.

One decided by whom people voted against rather than by those who voted for a candidate.

AS VICTOR, President Johnson has not emerged from the election, in our opinion, with higher personal esteem or increased regard; nor has because Goldwater. This is unfortunate, indeed; because we Americans like to look up to our leaders.

But with the electorate speaking as loudly and clearly as they have, we now have the realistic obligation as Americans to close ranks and unify our national purposes.

It is now time to expunge the hate and the smears and start thinking constructively again about our nation's future.

## But Also Gives Big Margin to Gov. Romney

IN RETROSPECT, we hope a lesson can be learned from this election.

We feel that it is a mandate to the Republican Party, and particularly to its moderate leaders, to select a candidate next time who will stand for progress within the fundamental beliefs of the Grand Old Party. Whether you label those beliefs Conservative, Moderate or Liberal, the important thing is that they be positive and not negative.

If we are to have a strong two-party system, both parties must put up their strongest candidate and a candidate who speaks for the majority of that party. The staggering Democratic vote in normally Republican areas shows this was not the case this year.

IF THE REPUBLICANS do not shake off the present leadership before the next election, we can forget about two parties in this nation.

The election is past. Let us regroup as Americans, working together with our elected leader.

And to our Republican friends we say very frankly, in the terms of that old typewriter lesson: "Now is the time for all good men to come to the aid of their party." Make it a party of constructive Republicanism.

## Dems Take Prosecutor, Clerk Races in County

In a surprise upset, traditionally Republican Oakland County crossed party lines Tuesday to elect Democrats S. Jerome Bronson to the post of prosecuting attorney and John D. Murphy, county clerk-registry of deeds.

With 317 precincts reporting out of a total of 352, Bronson led Assistant Prosecutor Robert L. Templin, 129,311 to 125,168.

Murphy tallied 127,922 votes to Republican incumbent David R. Calhoun's 124,987. Still to report were 35 precincts in Waterford, Pontiac, Novi, Northville and White Lake.

"IT IS MORE THAN likely that both Templin and I will be defeated," said Calhoun Wednesday morning.

He attributed the defeat to President Lyndon B. Johnson's one million vote plurality in the county.

"The voters by-and-large voted a straight ticket, only jumping down to Romney for the Democrats."

"In the last county election (two years ago) the Republican county slate won by a 50,000-vote plurality," said Calhoun.

## Gravlin Ruled Sane, But Faces More Tests

By DAVE PHILPO

William G. Gravlin, accused in the assassination of Robert F. Kennedy, has been transferred to Washtenaw County Jail where he will undergo further psychiatric examinations.

Gravlin, 30, was taken to Ann Arbor Friday, one day after he had been ruled competent to assist in his own defense by Oakland Circuit Judge James S. Thorburn.

The accused will be examined by two Ann Arbor psychiatrists—Dr. Andrew S. Watson and Marvin Starman—and must be returned to the Oakland County Jail "no later than Nov. 8," according to Judge Thorburn.

DR. WATSON is also an attorney and teaches in the University of Michigan law and medical schools.

Gravlin is charged with first degree murder in the slaying of his stepdaughter, Judith Ann Bentley, 16. Also killed with an ax and shotgun at about the same time were his wife, daughter and four other stepchildren.

In a sanity hearing before Judge Thorburn last Thursday, two psychiatrists disagreed on Gravlin's mental condition.

Dr. Abraham Tauber of Orchard Lake, who first examined Gravlin in 1961, diagnosed the suspect's present condition as "schizophrenia" and said his ability to assist counsel is "faulty."

Dr. Tauber said Gravlin, during a recent interview, talked of his deceased family "in the present tense" and at no time evidenced "any concern for what was going to happen to him."

## Report Coming On Survey of B'ham Traffic

A report on the first phase of Birmingham's long-awaited traffic survey is expected to be ready for presentation to city commissioners on Nov. 23.

Lloyd B. Reid, Birmingham's traffic engineering consultant, told commissioners Monday night his firm would be conducting a time and point-of-entry-and-departure survey in the central business district today.

The commission had ordered the study made last June to determine how effective the proposed peripheral route will be in handling present and future traffic flow.

The city has been taking steps toward the construction of a peripheral route (See REPORT, Page 2-A)

### Suburbia Today

How do other suburban communities solve their parking problems?

This subject is discussed in the November issue of Suburbia Today, appearing with this week's Birmingham Eccentric. "There's more than one way to break up the jam on Main St.," says the article by George Fielding Elliot.

Our paragraph deals with Birmingham's own Civic Design Committee, which has proposed a plan for the future development of the downtown area.

AND THERE'S an item about Bloomfield Hills in the "Gettin' Around" column in this month's Suburbia Today. Mrs. S. O. Komarantsky has a suggestion to offer D when it comes to giving Rover a bath.

FOR THESE and other interesting, informative and provocative articles, be sure to see the Suburbia Today supplement appearing with this week's Birmingham Eccentric.

## Parking Woes In Suburbs Article Topic

How do other suburban communities solve their parking problems?

This subject is discussed in the November issue of Suburbia Today, appearing with this week's Birmingham Eccentric. "There's more than one way to break up the jam on Main St.," says the article by George Fielding Elliot.

Our paragraph deals with Birmingham's own Civic Design Committee, which has proposed a plan for the future development of the downtown area.

AND THERE'S an item about Bloomfield Hills in the "Gettin' Around" column in this month's Suburbia Today. Mrs. S. O. Komarantsky has a suggestion to offer D when it comes to giving Rover a bath.

FOR THESE and other interesting, informative and provocative articles, be sure to see the Suburbia Today supplement appearing with this week's Birmingham Eccentric.

## IN THIS ISSUE

- Youngsters and adults turn out for Birmingham Halloween parade. See photos on 3-A.
- Residents find "It's a grand night for the theatre." See stories, pictures on 1-C.
- New gallery space is planned for Bloomfield Art Association. See story, picture on 1-D.
- Seaholm ties Royal Oak Kimball in final league game. See story, pictures on 1-E.
- Amusements 6-7
- Art for Art's Sake 2-3
- Arts of Living Page 1-1
- Bridge Column 7-D
- Business News 3-4
- Calendar of Cultural Events 6-D
- Church 6, 7, 8
- Real Estate 6, 7, 8
- City Beat 1-B
- Classified Ads 5, 6, 7, 8
- College News 3-C
- Crossword Puzzle 8-D
- Down to Earth 5-D
- Editorial 1-B
- Homemaking 1-D
- Movie Guide 7-D
- Nature Now 3-4
- Obituaries 6-D
- Real Estate 6, 7, 8
- Sports 7, 8
- Theatre 3-C
- This and That 2, 3, 4
- TV Listings 6-D
- Yesterday's Happenings 1-B
- Editorial 1-B
- Homemaking 1-D
- Movie Guide 7-D
- Nature Now 3-4
- Obituaries 6-D
- Real Estate 6, 7, 8
- Sports 7, 8
- Theatre 3-C
- This and That 2, 3, 4
- TV Listings 6-D
- Yesterday's Happenings 1-B

## Election tables on 6, 7-A By LARRY EVE City Editor

Traditionally Republican Oakland County joined the state and the rest of the nation Tuesday in the Johnson landslide.

The lone major exception was, as on the state level, Gov. George W. Romney. In winning his second term, the Bloomfield Hills resident carried the county by 73,000 votes over the state by nearly 300,000 over his Democratic opponent, Cong. Neil Staebler.

As in both 1956 and 1960, the Birmingham-Bloomfield area remained Republican on the national, state and county levels.

President Johnson's, however, showed strongly in the area. In Birmingham the President trailed Republican Barry Goldwater, 5,161 to 7,972.

ON THE national level, with 92 per cent of the votes counted Wednesday morning the total stood at Johnson, 39,563,070, and Goldwater, 29,937,886.

The margin gave President Johnson 481 electoral votes to Goldwater's 17. The five votes in Goldwater's home state of Arizona were still undetermined.

Also as in the nation voters turned out in near record numbers with most communities reporting better than an 88 per cent turnout.

In the race for Michigan's Senate seat, former Birmingham resident Philip Hart was an easy winner over the GOP's Ray Pateron.

Hart, in winning his second six-year term, held a 714,000-vote margin over Mrs. Peterson with better than 90 per cent of the vote counted. He also carried the county by a large margin but trailed Mrs. Peterson in the Birmingham-Bloomfield area.

CONG. WILLIAM S. Bloomfield was successful in his bid for a fifth term in the U.S. House of Representatives despite an early lead by his opponent, Frank J. Sierawski.

The Royal Oak Republican was assured the win with a lead of 98,180 votes to 67,791.

In the newly-created 15th Congressional District, State Auditor General Billie S. Fatnum, a Democrat, swept Pontiac attorney Richard Kahn.

## In Two Races on the Ballot (See MARGIN, Page 6-A)

## Youth Injured In Accident On Telegraph

A 19-year-old Bloomfield Township youth was listed in serious condition Wednesday in William Beaumont Hospital, Royal Oak, after being injured sustained in a traffic accident Tuesday at Maple and Telegraph.

Richard E. Howard, 1457 Club Drive, suffered a cerebral concussion in the mishap which occurred at 7:57 a.m. Two Detroit men—Daniel Weismann, driver of the other car, and Joseph Kinghtinger, a passenger—were treated at the scene hospital for contusions and lacerations and were released.

Police said Wednesday afternoon that the southbound lane onto Maple, cut in front of him.

## THE MAPLE-Telegraph intersection has been the scene of several serious traffic accidents this year, with two fatalities recorded within 1,000 feet of the corner. Improper left turns have contributed significantly to the total, police said.

## New Parking Regulations Take Effect

Birmingham's new regulations governing parking hours on streets and in municipally-owned lots go into effect today.

All meters in the central business district will be in operation from 9 a.m. until 6 p.m. on Monday, Tuesday and Wednesday.

On Thursday meters will operate from 9 a.m. until 9 p.m. There will be no restriction on Sunday and holiday parking.

Previously Municipal lots 1 and 4 operated only until 6 p.m., except Fridays.

Commissioners approved the establishment of the improved parking hours by creating better public relations for the city.

Police Chief Ralph W. Moxley said his department had received numerous complaints because the hours of meter operation had been inconclusive.

**12 HOUR PARKING LIMIT**  
9 AM - 6 PM  
ONE-DAY PARKING  
DIME A HOUR.  
QUARTER TO 3 HRS.

In the Birmingham-Bloomfield Hills 16th District, Troy Mayor Robert H. Huber was an easy winner over his opponent, Gerald J. Oberholzer of Clawson.

The lone Democratic win came in the 15th senatorial race with Oakland County Democratic Chairman Sander Levin besting Berkeley Mayor George Kuhn.

The GOP claimed two wins, the Democrats one; and one race was still in doubt late Wednesday morning in the four state house seats. The race in the Birmingham-Bloomfield area was being run by Republican William Hampton, Birmingham attorney, had little trouble in beating Ernest W. Mags Jr. also of Birmingham, in the 65th district.

In the 64th district Raymond L. Barter, the incumbent, bested John I. Bain by a substantial margin.

THE DEMOCRATIC win came in the 56th Legislative District with Bill St. Huffman, the incumbent from Madison Heights, winning over

DR. ROBERT BROCKMYER, a pediatrician and bookmaker, is (See GRAYLIN, Page 4-A)