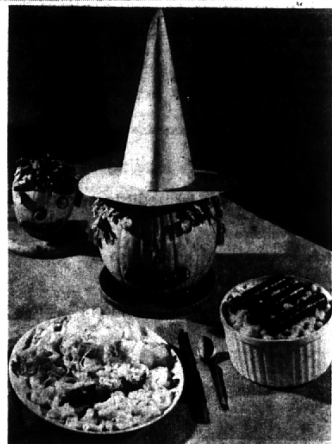




HOMEMAKING



HALLOWEEN CENTERPIECE GOES WITH MEAL.
Casserole is filled with macaroni, cheese.

**Treat Combines
Pumpkin Head
With Sausage**

You can give your friends or family a special Halloween treat for the eyes as well as the taste with a new serving idea—a witch-hatted pumpkin.

Get a pumpkin and make a Halloween witch's head by doming it with parsley for hair (this can be taped on easily). Then cut sausage bits in the size you want for eyes, nose and ears and use a full wiener or smoked sausage for the curving mouth.

Top it with a paper hat like the witches wear. The hat is made by rolling heavy paper into a cone and taping, pasting or stapling the edges together. Brown wrapping paper is fine for the hat and goes with your orange pumpkin and your autumn color scheme.

Add a circular edge which makes the hat brim and you have a pumpkin all dressed up with some place to go.

THAT SPECIAL "place" to go is dinner in your home when you serve the ever-popular macaroni and cheese with smoked sausage. There are few foods which always stand up to the popularity test, but these ingredients for a cool-weather casserole always come in tops in flavor appeal.

SAUSAGE WITH MACARONI AND CHEESE

Makes 4 to 6 Servings

- 1 tablespoon of salt
- 3 quarts of boiling water
- 2 cups of elbow macaroni (8 ounces)
- 6 smoked sausages
- 2 cups grated cheddar cheese (about 1/2 pound)
- 1 large onion, chopped fine
- 1 1/2 cups of milk
- 1 teaspoon of dry mustard
- 1/2 teaspoon of caraway seed

Add 1 tablespoon of salt to the rapidly boiling water. Gradually add the macaroni so that the water continues to boil. Cook uncovered, stirring occasionally, until tender. Drain in a colander.

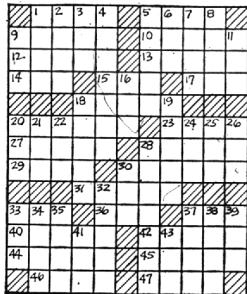
SPLIT THE smoked sausages lengthwise and stuff with half the cheese. Combine the macaroni and the rest of the ingredients and mix lightly but thoroughly. Turn into a greased one and one-half quart baking dish and arrange the stuffed smoked sausages on the top.

Cover and bake in a moderate (350 degree F.) oven 30 minutes. Uncover and continue baking 10 minutes or until the smoked sausages are lightly browned.

- ACROSS**
1. One's years of expectancy
 5. To become bankrupt
 9. Nobleman
 10. Green fruits
 12. Fruit or the oak
 13. Uge forward
 14. Number
 15. Possess
 17. Firmament
 18. Subside
 20. Actually
 23. Witty saying
 27. Semblance
 28. Pack animal
 29. Spanish coin
 30. Juneau is the capital
 31. Defamatory statement
 33. Herd of whales
 36. A jewel
 37. Exclamation
 40. Sprit
 42. Set solidly in a bed
 44. A Spanish dance
 45. Inflamed spots
 46. Stato
 47. Great

- DOWN**
1. A fabric from Brussels
 2. Metal
 3. Tro
 4. Uplift
 5. City in Michigan
 6. Polut
 7. Mischievous
 8. Flavoring plant
 9. An attic invader
 11. Cunning
 16. Route
 18. Star in Perseus
 19. Evenly proportioned
 21. Ostrich-like bird
 22. Rhino tributary
 24. Chaldean city; poet
 25. Vex
 26. Blue grass
 28. A flaw
 30. "Great Emancipator"
 32. Eskimo house
 33. Gun; sl.
 34. Parrots
 35. A deposit of coal
 37. Hillside digout
 38. Command to a dog
 39. Public notices
 41. Breakfast delicacy
 43. Extinct bird; N.Z.

**Answers to
Puzzle Will
Be Found on
Page 7-D**



Art

(Continued from 1-D)

almost flat. The practice of original carvings stopped altogether around 1808 and began being done from patterns.

"We never have enough time to get all we want," Betty laments, "so we'll keep being drawn back anywhere the graves date back early enough. It's an engrossing hobby—and we are thoroughly engrossed."

A quaint custom from the past has returned to delight tourists in Mexico City. Every Thursday evening from 7 to 9:30, Alameda Park is the center of a musical serenade by the Mexico City Symphony and a typical Mexican band.



APARTMENTS

Three bedroom apartment homes available for November 1 occupancy.

(Hotspot Appliances)

FOX CROFT APARTMENTS
In Bloomfield
Maple and Telegraph
Phone JO 5-0218

**THE
KEATING
COLUMN**

IN THE VILLAGE



Here's an outstanding home that's well priced, too. In Bloomfield Village close to Maple and Cranbrook. It's walking distance to Birmingham Grade and High Schools, shops, and transportation. Four Bedrooms, large family room, and Library, sparkling carpeting, many, many built-ins.

IN RONSDALE RAVINES



If you haven't seen RONSDALE yet you're missing something! Developed along a wooded ravine where the sparkling waters of the Rouge River flow. Here are some of the area's most beautiful homesites.

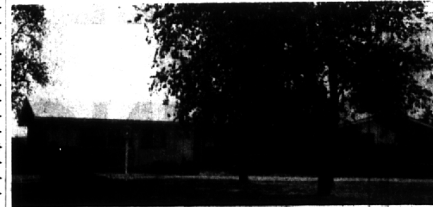
A home, such as the one pictured, with four bedrooms, 2 1/2 baths and large family room, can be built for about \$35,000.00. Or we'll build from your plan. Walking distance to Groves High School. Models open daily 1-6. Just west of Evergreen, north of 13 Mile.

PITCHING WEDGE TO THE GREEN

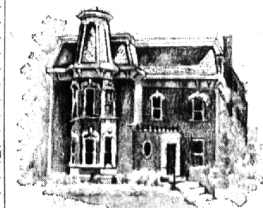


SUPERB! BEAUTIFUL! OUTSTANDING! TOPS! We could use up all our adjectives in describing this unique home. On a lovely site overlooking Oakland Hills fourth green and fifth tee. It has a swimming pool with fountain, 40 outside lights and carpeting throughout. There are four good-sized bedrooms, Bar-B-Q, patio. Sprinklered grounds, tastefully landscaped. Exquisite inside and out and priced far below reproduction at \$42,900.00.

VOTED MOST CHARMING!



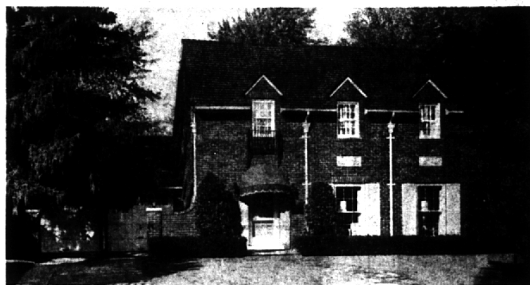
One of the most delightful homes in the area is this "wife saver" rambler. Three good-sized bedrooms, family room, efficient kitchen and slate foyer. The grounds are exquisite with a Japanese garden surrounding the patio. A trade-in home priced below market at \$29,000.00. Open Thursday, Friday, Saturday 1-6 p.m.



KEATING OF BIRMINGHAM

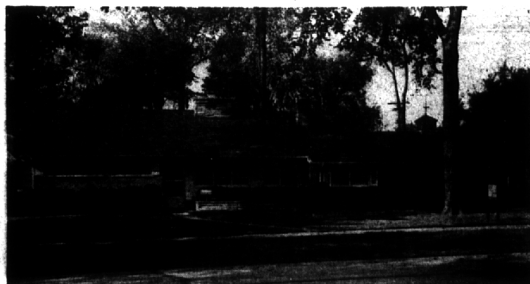
325 SOUTH WOODWARD AVENUE
BIRMINGHAM, MICHIGAN, JO. 6-5121 MI. 6-1234

TOWN HOUSE



A Classic Colonial with sophisticated, elegant decor in absolutely **SUPERB CONDITION**. Excellent traffic pattern and lots of living area on first floor. **4 BEDROOMS, 2 1/2 Baths**. First floor Family room. 2 Fireplaces. Lovely Paneled Recreation room. Custom draperies, carpeting, window shutters. Custom wall papers and fabrics. Many new De Luxe features. **IN A PRIME CITY LOCATION**, the 100 foot frontage includes 1 1/2 lots. Lawn is Washington bent grass and has underground sprinkling system. **THIS IS AN EXCELLENT FAMILY HOME**. Priced at \$43,500.

CHOICE BEVERLY SITE



Set on a professionally landscaped double lot with magnificent trees as you can see. This ranch was built by a Builder for himself so the construction, finishing and equipment is of the best. Large living room with heatolator fireplace with view to rear of lovely lawn. Dining all. Library too. Fine Jalousied Porch easily converted to year-round Family room as baseboard heating is installed. Radio controlled 2-car garage. Carpeting and Draperies included. Fine Birch paneling. 3 Bedrooms, 1 1/2 Baths. **COMPLETE NEW HEATING SYSTEM**. The house is vacant and you can have immediate possession. **THIS PROPERTY MUST BE SOLD**. Priced at \$29,500. SEE and MAKE AN OFFER.

SNYDER KINNEY & BENNETT
INC.
Realtors

239 S. Woodward, Birmingham
32740 Franklin, Franklin

MI 4-7000
MA 6-9600

CLEARANCE SALE

EVERGREENS Up to **50% OFF**

BLUE SPRUCE 7 YEAR PLANTS 99¢ **PYRAMID YEW 6-year plants, potted 99¢**

JAPANESE YEW SPECIALS — LANDSCAPE SIZE
PYRAMID YEW 1.49 **HICKS YEW 1.49**
GLOBE YEW **SPREADING YEW**

FLOWERING TREES 2.99 **ALL POTTED FRUIT TREES 99¢**
Many Varieties 7-8 Feet Tall INCLUDING DWARF

JUMBO SHADE TREES

SILVER MAPLE 12.50 **SYCAMORE 12.50**
NORWAY MAPLE 12.50 **SUGAR MAPLE 12.50**
LOCUSTS 12.50 **RED MAPLE 12.50**
GREEN ASH 12.50 **PIN OAK 12.50**
MT. ASH 12.50 **RED OAK 12.50**

VILLAGE NURSERY SALES

OPEN 7 DAYS NORTHWESTERN HIGHWAY
Elgin 6-5300 Between 9 and 10 Mile Roads