

Movie Guide

Parenteen Committee
Birmingham P.T.A. Council

MOVIE	Green Sheet	National Legion of Decency
Unsinkable Molly Brown	A-MY-Y	A-2
Murder at the Gallop	A-MY-Y	A-1
The Long Ships	A-MY	B
Swingin' Maiden		A-1
The Thing That Couldn't Die		A-2
The Giant Claw		A-1
Kitten with a Whip		B
The Killers	A	A-3

* recommended as superior entertainment especially for children

CODE
GREEN SHEET
These audience symbols are intended as broad guides to selection, and do not indicate either recommendation or non-recommendation of the films to which they are applied.

A Adults
MY Mature Young People
Y Young People (12 years to 16 years)
C Children (unaccompanied by adults)
GA General Audience

NATIONAL LEGION OF DECENCY
A-1 Morally Unobjectionable for General Patronage
A-2 Morally Unobjectionable for Adults and Adolescents
A-3 Morally Unobjectionable for Adults
B Morally Objectionable in Part for All
C Condemned
SC A separate classification is given to certain films which, while not morally offensive in themselves, require some analysis and explanation as a protection to the uninformed against wrong interpretations and false conclusions.

B'ham Girl Training at N.Y. School

Leigh Taylor Young, daughter of Mr. and Mrs. Donald E. Young of Birmingham, has been selected for training in the theatre arts at the Neighborhood Playhouse School of the Theatre in New York City.

Miss Young is a graduate of the Wylie E. Groves High School and attended the School of Speech and Drama at Northwestern University. Her theatre experience includes work in summer stock at the Northland Playhouse in Southfield and at Eagles Mere, Penn.

THE NEIGHBORHOOD Playhouse School of the Theatre, a non-profit organization, was established in 1928. Among its hundreds of graduates who have been successful on the stage, in motion pictures and

Fete Scout Leaders At Dinner Meeting

North Trails District Boy Scout leaders will be honored Monday at a dinner at the First Presbyterian Church, Birmingham. James R. Bradburn, vice-president of manufacturing and engineering for Burroughs Corp., will speak at the 6:30 p.m. meeting.

His topic is "Be Prepared—a New Meaning for Today's Scout." A movie, "Highway to Infinity," a 20-minute color film which depicts the Mercury space flight from blast-off to recovery including pictures taken from the capsule in flight will be shown.

Silver Beaver awards will be presented to outstanding scouters by Edwin O. George, Detroit area council president.

In television are Gregory Peck, Joanne Woodward, Tony Randall, Suzanne Pleshette, Eli Wallach and Tammy Grimes.

Alumnae Support Education Center For U-M Women

University of Michigan alumnae have agreed to raise funds for the expansion next year of the University's newly-established Center for the Continuing Education of Women.

Opened in September, this center is serving primarily as a counseling office for mature women who wish to continue higher education along with other responsibilities, such as jobs, home, and children.

Announced as a "pilot operation," the center has almost been overwhelmed by the initial response from women seeking its assistance. The center has offices in the Michigan League building on the University campus.

AT ITS REGULAR fall meeting, the Michigan Alumnae Council voted to undertake fund-raising

Appoint Coordinator Of Rehabilitation

Appointment of Mrs. Beulah Short, Goodells, Mich., as draft coordinator of the division of Vocational rehabilitation of the department of Public Instruction for nine counties is announced by Kenneth A. Lane, supervisor of the Flint District Office.

The nine counties are Oakland, Genesee, Huron, Lapeer, Macomb, Sanilac, St. Clair, Shiawassee, and Tuscola.

Among other members of the committee are Mrs. William Burlingame, 3891 Oakhills Dr., Birmingham and Mrs. G. T. Christiansen, 425 Fairfax, Birmingham.

FOR LEASE

5,500 sq. ft. industrial space in new building under construction in Birmingham Airport Industrial Subdivision at Maple and Coolidge. Will finish to your specs with room for expansion. Occupancy September 1, 1964.

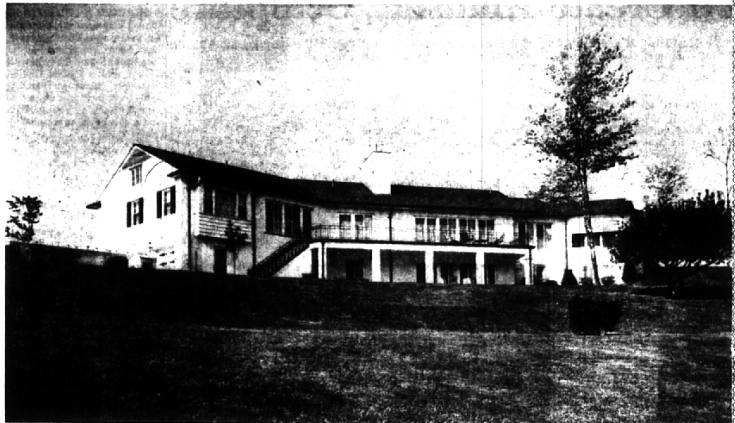
Simone & Co. 273-8300



Beautiful Bloomfield Hills
Old English Colonial on a quiet wooded lane. Handsome liv. and din. rms. Sep. breakfast nook and lrg. kit. 4 twin sized bedrms. Paneled-tiled rec. rm. Porch and Patio in rear. Here's peace and privacy plus value. \$40,900.

CHAMBERLAIN
975 S. Hunter MI. 6-6000 31500 Northwestern Hwy. MA. 6-9100
Ask For Mr. Lehman

On Beautiful Meadow Lake



6905 MEADOW LAKE ROAD

Set on the crown of a long blue-grass slope which sweeps down to the water's edge, this magnificent Bi-level offers the ultimate in esthetics and quality. The site is large (278x396 approximately). And we believe there is no finer construction in any single residence anywhere.

Complete lawn sprinkling system. Dressing rooms and shower at lake edge. Fine sandy beach for swimming in this sparkling, spring-fed lake. Driveway is heated for defrosting winter ice.

Lower level is completely finished in polished terrazzo, as is also the huge 3-car Garage! All the rooms are large and finished with woods and marbles to amaze the most fastidious.



To the left a view of the handsome 26-ft. living room and beyond the elegant dining room. Both open to the sun deck and year-round view of the lake.

Solid cherry paneled library. Wormy chestnut paneled Sun Room opens to completely equipped Conservatory.

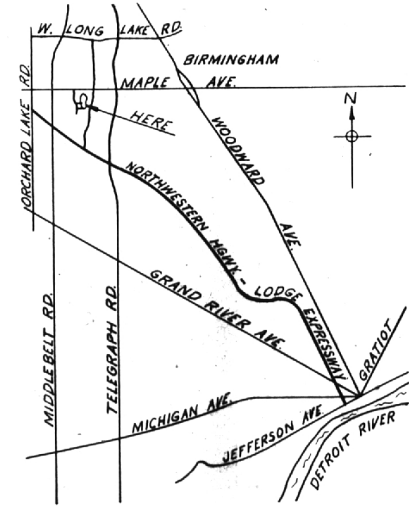
Kitchen plus breakfast room and pantry—all equipped with every device and convenience imaginable.

Beautiful Lower-level Family room with de-luxe bar.

4 Fireplaces including the huge ledge rock one with barbecue grill.

4 Bedrooms. 4 Full Baths. Luxurious Powder Room. Italian marble floored foyer.

House is constructed of solid masonry with steel joists, timber frames. There are two GE oil-burning boilers for hot water radiant heat with separate control. All copper pipes. Entire Bedroom wing and Library cooled by Carrier Air Conditioning system. Humidifying equipment too! Deep well. Tiled roof. Copper Gutters and Downspouts.



Only 35 minutes from downtown Detroit. Only 10 minutes from Birmingham. Birmingham School District.

There are so many terrific details about this home that we could go on and on but it must be seen to be appreciated.

IF YOU want the finest in construction, equipment, maintenance and long for wide-open views, swimming and skating facilities, with seclusion close to civilization...

CALL US FOR AN APPOINTMENT
The price is compatible with the quality. Offered at 60% of owner's investment.

\$119,000

SNYDER KINNEY & BENNETT
INC.
Realtors

239 S. Woodward, Birmingham MI 4-7000

32740 Franklin, Franklin MA 6-9600

Space for Lease in BIRMINGHAM'S FINEST RETAIL SHOP



Adjacent to 2 municipal parking lots Hughes-Hatcher-Suffrin on opposite corner

Ideal for: Women's Shoe Shop, Women's Formal Daytime and Evening Wear, Record shop, Music shop

101 Townsend leased to Moseley's
103 Townsend lease under negotiation

Available:
105 Townsend 30x90 (2620 sq. ft.)
107 Townsend 30x90 (2620 sq. ft.)

Each unit has full basement, separate service entrance, 2 toilets, air conditioning equipment, excellent display windows.

For additional information call

MAX BROOCK INC.
Established 1895
Birmingham's Senior Realtors
300 S. Woodward
JO 4-6700 Open Daily 9-8 Saturday 9-5
MI 4-6700