

Space Photos To Be Shown At Cranbrook

A Delta vehicle lifts off the pad at Cape Kennedy, carrying a relay experimental satellite.

Tiro II, the weather observation satellite, is checked out on a special test machine.

There are but two of 94 pictures which can be seen in the National Aeronautics and Space Administration's "Photography from Five Years of Space" exhibit which opens Monday in Cranbrook Institute of Science, Bloomfield Hills.

The photographs, mostly in color, depict highlights from the Government Space Agency's four major program fields—manned space flight, space sciences, applications, and advanced research and technology.

THE EXHIBITION is a collection of photographs by NASA,

High School Pupils Will Visit College

More than 400 high school juniors and senior are expected to attend College Admision Day at Oakland University Saturday, according to Glen Brown, director of admissions.

The program, which begins at 9 a.m. and continues through 1 p.m., is designed for high school students interested in learning more about admission practices, financial aid, college testing programs and courses of study.

According to Brown, delegations of students will be coming from throughout the state for the Saturday meeting.

Life, National Geographic and New York Times cameramen. Many of the photographs on display were made with 35mm cameras and film similar to equipment in general use today.

The show will remain up through Nov. 22.

Accented

(Continued from 1-D)
full of careful, subtle decisions, beautifully carried out, and the result is playful, pleasing and definitely art.

Other interesting pieces in this section: Ellen Knut's woven sculpture which I found untidy but someone standing near me thought exciting; Glen Kaufman's woolst of wool rugs which I described in the Cranbrook Faculty show; and, not to be skipped over lightly, a coverlet of linen and wool made by Elizabeth Beyer Craig of 1840 and a patchwork quilt attatched by Alice Shephard Hall in 1860.

This work, so lovingly done and lovingly preserved has a quality all its own.

THERE WAS NO historic implication in the sculpture selected for the show, but there are numerous points of view, in bronze, steel, copper, glass and aluminum. Harry Bertina's "Infinity" is a marvel of welded metal construction, an overblown dandelion head as intricate and perfect as nature's own, but at least 100 times life-size.

Glen Michael's aluminum casting of one of his typical three-dimensional flow patterns seems rather like the negative of a photograph. I especially liked Harlan M. Quinn, Jr.'s, "Bittern," a timeless solid-looking bronze.

There are lots of big names in this group: Irving Berg, Morris Brose, Betty Conn, Marshall Fredricks, Svea Kline, Carl Miles, Jon Rush and Berthold Schwietz.

OF THE metalworking shown, there is an attempt at historicity, but it doesn't seem important. Most of the pieces are silver. Charlotte Charles Quinn's magnificent punch bowl ladle with smoky topaz decoration can be duplicated to your order, and Earl Krentzin's whimsical silver figures climbing an ivory mountain are wonderful.

Many thanks to Arlen and Dr. Herman Linn for preparing this outstanding exhibition. It can be seen through Nov. 1.

Band

(Continued from 1-D)
singing and playing together, they enlarged the group to the present nine members, becoming a real hit with the young and the not-so-young of the community.

Eight of the band attend Seaborn High School and one goes to Groves.

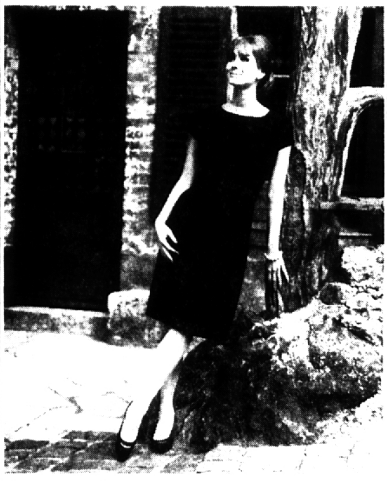
Bob and John Wakeman, 736 Pflieger, play guitar and banjo; Harry Kenison, 1807 Melbourne, washboard; Bruce Hudson, 2320 Stoneridge, bongos; Bill Whitney, 1635 Torrey, gilly-tomper; Mike Hawkins, 1958 Bates, kazoo; Tom Root, 1741 Bradford, guitar; Kerry Lawrence, 2537 Whiteleigh, juke; and Steve Dwoley, 1808 Mohawk Court, gut bucket.

Costume-Makers



Full-Figured Fashions

Thirty-five per cent of the women in the United States are overweight, according to the fashion director for a retail company that specializes in larger-than-average sizes. For the first time Paris designers have created full-figured styles, and these are available in the U.S. The collection includes daytime-into-evening fashions from the salons of Lanvin, Castillo, Jacques Heim, Guy Laroche and Venet. All come in sizes 14½ to 26½ and 38 to 46. The couture originals include (above) a lightly-shaped, spongy-wool suit by Castillo, photographed on the Champs-Élysées, and a slimming wool crepe dinner dress by Lanvin, photographed in the countryside near Paris.



Area Resident's Book Published

"The Political Plaque in America," a book written by a Franklin man, has been published by Forum Publishing Co. of Boston and is on sale in book stores now.

The author, George P. Lowe, 27027 W. 13 Mile Road, is a professor in the department of engineering mechanics at Wayne State University's College of Engineering.

ROBERT LeFVRE, editor of the Gazette Telegraph of Colorado Springs, Colo., is quoted on the book jacket as saying:

"In the manner of a marksman, Lowe, parades the facts and shoots them down in as fancy a display of verbal gunplay as it has ever been our pleasure to read..."

"... This is clearly a guide for the disenchanted, leading them out of the maze of double dealing and red tape that is politics, back to a land where some segment of reason may remain."

WOODCREST NORTH



New Exciting Model Homes Bloomfield Area

Woodcrest North is situated on Maple Road near Orchard Lake Road
\$23,900 - \$27,900
(including lot)

Call: 626-0372 or LI 1-5522
Roth & Poe Realty Company

Just Because (You Know Why!)

SALE!

OUR EXCLUSIVE PURE WOOL ITALIAN KNITS

MORE THAN



WERE 70.00

NOW 26.90

Don't phone! Don't write! This is no misprint! Yes, our exclusive 2 and 3-piece Italian knits are just \$26.90! Every color! Every Style!



19320 Livernois near 7 Mile • Park Free

WOOD PANELING

SPECIALS
Here's your chance to buy beautiful Wood Paneling at special low prices.

Pick from Brand Names such as Weldwood, Bruce Ply & Welsh.

- ¼"-4x8 Rustic Hickory\$11.88
 - ¼"-4x8 Amber Elm 10.95
 - ¼"-4x8 Heather Birch 8.45
 - ¼"-4x8 Charter Pecan 15.95
 - ¼"-4x8 Driftwood Manila 6.95
 - ¼"4x8 Early Amer. Walnut 13.45
 - ¼"-4x8 Early Amer. Birch 8.45
 - ¼"4x8 Early Amer. Pecan 12.45
- Prices apply for 6 panels or more

ZONOLITE INSULATION

Econ-O-Fill
\$1.09 bag

ALUMINUM COMBINATION DOOR

Prubang complete with hardware
\$21.95

CAULKING TUBES

White and Natural
3 for \$1.00

GARBAGE CANS

20 Gallon Size
\$2.79

ARMSTRONG CEILINGS

To go with your new paneled walls
SEE THE NEW '65 DESIGNS

• 12x12—**\$12.50**
Textured Acoustical
T & G. 60 Ft. Ctn.

• 12x12 Georgian **\$10.75**
Acoustical
T & G. 60 Ft. Ctn.

THIS WEEK'S SPECIAL

• 12x12 Classic **\$9.90**
Acoustical
T & G. 60 Ft. Ctn.

FREE USE OF STAPLE GUN

Be Prowler Safe!



NEW BERRY AUTOMATIC

Opens garage door from inside your car

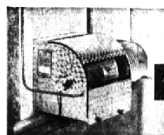
Push-button pocket transmitter automatically opens, closes door, lights up garage. Guaranteed five years.
\$159.00

Installed

NEW Fingertip Controlled HUMIDIFIER

operates on less than 1/2c per day!

We all know the benefits of adequate humidification; how it improves health, protects furniture, and saves fuel. The unique operating principle of the Dramatic humidifier gives you all these advantages with the highest moisture output at the lowest operating cost... LESS THAN 1/2c PER DAY! And you can dial the desired humidity by means of a Honeywell humidistat that can be placed anywhere in the home for convenient, controlled humidification. The Dramatic utilizes a polyurethane foam evaporating pad on a motor driven spiked drum which rotates in a pan of water. Calcium deposits are absorbed by the pad—eliminating mineral dust in the air. When the pad becomes filled, it is easily replaced. The Dramatic will supply adequate humidification for areas up to 3,000 square feet.



Skull's

NEW MODEL 90

dramatic HUMIDIFIER

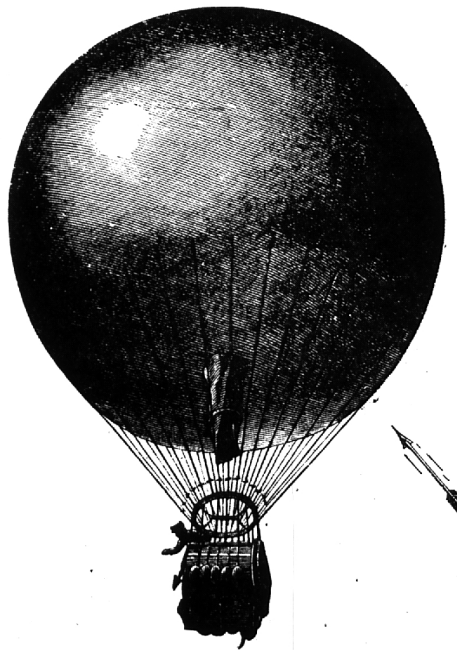
CHARGE IT at

MASKILL HARDWARE

Open Daily 'til 8 P.M. — Saturday 'til 6 P.M. Sunday 10 A.M. until 2 P.M.

4100 N. Woodward, Royal Oak

LI 9-3333

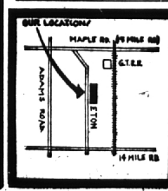


Like Surprises? Like getting 3½ percent on your savings when you think you are getting 4 percent. It happens . . . but not at Birmingham Federal. You start 4 percent earnings at Birmingham Federal immediately on all savings made by the 10th of the month and keep it up until the money is withdrawn at the end of the quarter. Now isn't that better than having to leave the money in a whole year before you start earning 4 percent.

Think it over!

Birmingham FEDERAL SAVINGS

Branch Offices: 99 W. Maple, Birmingham • 3700 W. Maple at Lohrer, Bloomfield • 3055 W. 12 Mile, Berkley



Your complete Home Modernization Center.



425 S. ETON BIRMINGHAM MI 4-5300



Home of the House Doctor