

**Firsts in Medicine Is Topic of Talk**

Dr. Harvey M. Merker, retired director of scientific relations for Parke, Davis & Company, will speak on "Adventures in Medicine from Withcraft to World Health" before the South Oakland County Chapter of the Blind next Thursday in the sanctuary of Berkeley Methodist Church.

Dr. Merker's talk will include incidents in connection with medical discoveries; insulin for diabetes; antibiotics and salvarsan for infections; vaccines for polio and other virus diseases; vitamins; hormones for glandular disturbances; and prompt therapy for leprosy.

**Bookcase**

(Continued from 1-D)

writer who will make a movie script out of it and cast Jack Lemmon in the role of Roger Quill. After all there are Yam-Yum trees in every land.

The author of this tale is Gene Maskey, a former Hollywood writer, citizen of the world and a retired rear admiral in the Navy. His travels have obviously acquainted him with the world's best hotels and their environs. And he is well qualified to write about the dreamboats of the distaff side, having been married, at times, to Joan Bennett, Hedy Lamarr and Myrna Loy, among others.

As an author, his style is sharp, and he writes with journalistic excellence—a refreshing characteristic not known found in books of this type. His humor hits one atop after another, and his approaches are not strewn with oldswive but some of the best puns since William S. Gilbert lay down his pen.

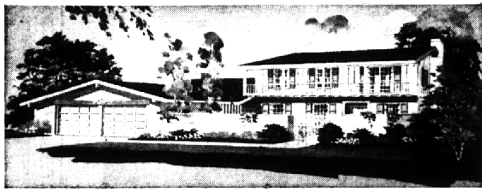
The whole book is gay, whipped-creamy reading, but then as Colonel Kipp said, surveying his swollen feet, "chaun son goat."

"Thanks anyway . . . but I'm taking my prescription to OPTHALMIC OPTICIANS. They're opening MONDAY THE 19th in Bloomfield Hills."

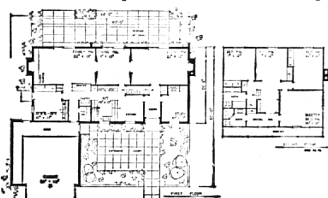
PRESCRIPTION EYEWEAR SINCE 1900

**OPHTHALMIC OPTICIANS**

CHATEAU BUILDING  
TELEGRAPH AND LONG LAKE ROADS  
BLOOMFIELD HILLS  
647-1411



the Monterey • Immediate Occupancy • \$44,900



An outstanding residence situated on a large lake lot with a beautiful view from the rear-facing living room. Four bedrooms, fifth bedroom or study on the first floor. PLUS a sewing room or office with an outside entrance. Two fireplaces, 2 1/2 baths. Front courtyard has brick terrace wall and gate.

HOUSES OPEN from 11 a.m. to 8 p.m. Monday through Friday and Sunday. Until 6 p.m. on Saturday. Closed on Thursdays.

KIRKWOOD PHONE: MA 6-7522

**Thompson-Brown Company**

The Best Choice For Buyers of Better Homes  
19426 GRAND RIVER • Kenwood 1-8700



**BIRMINGHAM DANCERS REHEARSE FOR COENCT**  
Betty Dullong, 315 Fairfax (left) and Anna Marie Gray, 274 Chesterfield.

**BAA Offers An Evening of Modern Dance**

The Bloomfield Art Association will present the Choreographers' Workshop of Birmingham in an evening of dance at 8:30 p.m. Friday at the BAA, 1516 S. Cranbrook Road.

Tickets may be purchased at the door. There is a charge for non-members; members are free.

The concert will include a lecture-demonstration on modern dance and several dance members by the group.

**Franklin Forum Series Offers Local Musician**

The Friends of the Franklin Library will open its fourth annual Franklin Forum series at 1:45 p.m. Wednesday, with Dr. David DiChiera, composer and musician who has become known for his creative in Opera series.

The assistant professor of music at Oakland University, Rochester, will illustrate "Style in Music" by playing some of his own award-winning compositions.

DiChiera, 28-year-old, head of the music composition department at Oakland, received his Ph.D. in music at UCLA where he was graduated in 1956 with highest honors, as well as honorary membership in Phi Beta Kappa.

He was awarded a Gershwin graduate fellowship and studied musicology in Italy on a Fulbright scholarship.



DR. DAVID DI CHERIA

While in Italy, the United States Information service commissioned him to compose and perform an original piano concerto which was later broadcast nationally and highly praised by the Italian press.

Mrs. Helen Williams, an authority on family reading, will present her views on literature as found in the adult literary field Nov. 18. She may be remembered as the "Miss Williams of the Old Red House" in Rochester. A former teacher at Wayne State University and guest lecturer at the University of Chicago, she has conducted workshops in family reading and has appeared as speaker in Flint, Grosse Pointe and Birmingham Bloomfield area lecture series.

LENORE ROMNEY, the Governor's Lady, will appear Jan. 20, speaking on woman's responsibilities as citizens in today's world.

Florida Sellen will speak on "Americana" Feb. 17, giving history and background connected with the hobby of collecting.

Mrs. Sellen, a writer and editor most of her life, has written numerous articles on collecting.

Her family has been in Oakland county for four generations. Her hobby grew from a gift of a patch and until she now has 125 of these. She likes to know the history of the various pieces and will share her findings in her lectures.

The Franklin Forum is held in the Franklin Community Church. Tickets are available at the Franklin Library.

**Appointed at WSU School of Medicine**

Barbara F. Rosenberg, M.D. of 688 Bervyn, Birmingham, has been appointed associate professor of pathology at Wayne State University School of Medicine.

Dr. Rosenberg, whose husband Irwin is also a medical doctor, received her B.A. from Wellesley in 1949 and her M.D. degree from Yale University in 1953. She took her internship in pathology at Barnes Hospital in St. Louis and her residency in pathology at Children's Hospital in Boston and also Barnes Hospital.

She will teach pathology, conduct research at the School of Medicine and also perform clinical work at Detroit Receiving Hospital. The Rosenbergs have four children, Michael, Jonathan, Bryan and Rebecca.

**Gourmet Cooking Classes Available**

Connoisseur's Kitchen, a 10-week course in cooking as an art for men and women, is being offered by the A La Grecque, Pommes de Parisien, Sachertorte, Lobster Strudel apartment.

Classes began Sept. 30. They include demonstrations on preparation of Caviar Royale, Moussaka and other dishes.

**Ethan Allen**

EARLY AMERICAN FURNITURE AND ACCESSORIES  
More gracious Living with the best of yesterday for Today.

- Come visit us
- soon and see
- our unusual collection of
- Colonial Living Room
- Bedroom and Dining
- Room pieces.



**ANNOUNCING Williamsburg**

BLOOMFIELD'S NEWEST SUBDIVISION WITH WATER, SEWER, GAS and PAVED ROADS.

COLONIALS—SPLIT LEVELS—RANCHES

Priced From \$40,900

On Estate-Size Lots with Rolling Terrain

**COLEMAN & MOSS Builders**

OFFICE: 647-1998 Developers of Distinctive Subdivisions MODEL: 646-2586 or 626-0149

**SHUTTERS! TOP QUALITY-LOW PRICES!**

FOR INTERIOR WINDOWS

H	Width	6	7	8	9	10	11	12
E 20	1.10	1.35	1.50	1.68	1.88	1.98	2.19	
24	1.50	1.75	1.93	2.09	2.25	2.38	2.48	
I 28	1.60	1.94	2.09	2.24	2.40	2.49	2.84	
G 32	1.92	2.10	2.44	2.77	2.92	2.98	3.29	
T 36	2.26	2.56	2.85	3.16	3.40	3.55	3.76	
H 40	3.50	3.60	3.71	3.78	4.04	4.19	4.32	

FOR EXTERIOR WINDOWS STOCK 1 1/2 BLINDS — PRICED PER PAIR

14x35 1/2—\$5.95	14x51 1/2—\$7.35	18x35 1/2—\$6.30	18x51 1/2—\$7.90
14x39 1/2—\$6.30	14x55 1/2—\$7.60	18x39 1/2—\$6.65	18x55 1/2—\$8.45
14x43 1/2—\$6.55	14x59 1/2—\$8.10	18x43 1/2—\$7.05	18x59 1/2—\$8.70
14x47 1/2—\$6.85	14x63 1/2—\$8.45	18x47 1/2—\$7.55	18x63 1/2—\$9.20
	14x67 1/2—\$8.70		18x67 1/2—\$9.65

WE WILL HELP YOU DO IT YOURSELF, OR RECOMMEND A QUALIFIED CONTRACTOR

**BIRMINGHAM LUMBER & SUPPLY CO.**  
1025 HAYNES STR. MI 4-3636

Between Adams & Hunter—5 Blocks South of Maple (East of Greenfield's)  
Hours: Mon. Thru Fri. 7:30 to 5:30 P.M. — Sat. 7:30 to 4 P.M.

**THE VILLAGE PLAYERS**



**Sharing a Theatre**

Keys to the playhouse are presented by G. Thordike Dweley, president of the Birmingham Village Players, to Frederick G. Bahr, president of St. Dunstan's Guild of Cranbrook. The playhouse at 762 Chestnut, Birmingham, is being loaned to St. Dunstan's Guild for its first fall production, "The Moon Is Blue," scheduled Oct. 29, 30, 31 and Nov. 1 after the run of the Village Players' "No Time for Sergeants" which opens Friday. Fire had routed plans at St. Dunstan's own playhouse.



**Birmingham Schools in "GREENTREES NORTH"**

Consider the advantages of this area of fine homes:

- Birmingham schools
- Minutes from Birmingham and Northland Shopping Centers
- In Suburban North Woodward
- Easy access to Southfield and John C. Lodge Freeways
- Parochial Schools and Churches nearby
- City water and sewers
- Choose from Colonials, Tri-levels and Ranches
- Homes have family rooms, natural fireplaces, 2-car attached garages, dishwashers and other features



The Camden, one of five models, is a four-bedroom Colonial with 2 1/2 baths, 2-car attached garage, separate dining room, family room with natural fireplace, . . . storms and screens, built-in Hotpoint dishwasher, oven and range and dozens of other features . . . 2,31 Sq. Ft. of living area plus full basement. Its price is \$29,900.00 or as low as \$28,125. Other models are priced from \$27,500.00 or as little as \$26,050.00.

OPEN Daily and Sunday 1-9 p.m. Saturday 1-6 p.m.

**MARK BUILDERS, Inc.**  
16232 WEST MANCHESTER ROAD - DETROIT, MICHIGAN  
MODEL PHONE: 646-4148 OFFICE: 61-0800