

# Add Zest to Vegetables

The wonderful world of vegetables makes meal planning a joy these days. There are so many varieties available all through this fall season, no homemaker needs to serve monotonous meals. Vegetable preparation can be fun, if you use a little imagination and ingenuity in accents and garnishes.

Four over Brussels sprouts. Toss lightly. Garnish with pimiento strips and a spring of fresh parsley. Serves six.

If chicken stock is not available substitute chicken bouillon cubes and boiling water, using 1 bouillon cube to each cup water. Omit salt.

A few additions to the browned butter or boiled-in-butter routine can transform an ordinary vegetable into a truly exciting delicacy. If you find yourself with a little extra time there are many fancy frills you can fuss with, but even on a hurried day a little dash of something special will give you a thrill of accomplishment, with little effort.

Here's a simple suggestion as a starter.

## TOY CABRAGE TREASURES

1½ pounds (2 pints) Brussels sprouts  
1-inch boiling chicken stock  
2 tablespoons chopped onion  
½ teaspoon salt  
½ cup coarsely chopped pecans  
½ stick butter or margarine  
Pimiento strips  
Fresh parsley  
Wash and trim Brussels sprouts. Soak in salted water to cover 20 minutes, using 1 teaspoon salt to one quart water. Drain and rinse with cold water.

Place them in a saucepan with 1-inch boiling chicken stock, onion and salt. Bring to boiling point and cook, uncovered, 5 minutes.

Cover and cook 10 minutes or until just barely crisp-tender. Drain if necessary and keep hot. Sauté pecans in butter or margarine two to three minutes or until butter is golden.



**CABBAGE IS KING IN MEALTIME DELICACY**  
Dish begins with Brussels sprouts



## Here's Story of Meat Inspection, Grading

For almost 60 years federal inspectors have checked meat moving in interstate and foreign commerce. Today, about 82 per cent of the commercial production of U.S. meat and meat food products are federally inspected for cleanliness and wholesomeness.

More than 100 meat processing establishments are under federal inspection, and more than 100,000,000 meat animals are slaughtered annually under federal inspection.

Inspection begins with live animals and continues through examination of each carcass with supervision of each stage of curing, canning or other processing. The final approval on carcasses and large meat cuts is shown by a small round purple stamp with the letters "U.S. INS'PD. & P.S.I."

MICHIGAN IS one of 30 states where meat can still be sold without federal or state inspection. This means that meat produced, slaughtered and processed in Michigan is under jurisdiction of local county or city regulations. Some counties have no regulations. Meat inspection and meat grading are different. Meat inspection tells the consumer that the meat animal was healthy and that it was slaughtered and processed under sanitary conditions. Grading tells the shopper about quality characteristics such as tenderness, flavor and fat covering.

Pork is not graded for retail sale for all pork is from young animals and is usually tender meat. Federal grades are established for retail cuts of beef, lamb and veal, and many packers and retailers use different brands to differentiate various qualities or grades.

NEARLY ONE-HALF of all beef sold today is graded by the U.S. Department of Agriculture. If graded, beef will be marked with a purple shield-shaped stamp containing the letters "USDA" and the official grade—Prime, Choice, Good, Standard, Commercial, Utility, Cutter or Canner—in that order of quality.

Today, 70 per cent of the graded beef is USDA Choice and 20 per cent is USDA Good. Only four per cent grades USDA Prime, and this expensive meat usually goes to hotels and restaurants.

Whenever you have wants of any description, turn to The Eccentric Want Ads to buy, sell, find. To order a Want Ad, phone Want Ad headquarters, Midwest 1-3100.

## ART FOR ART'S SAKE

By CAROLYN HALL  
Special Writer

# Detroit Galleries In C'brook Show

Take heart, home-bound art lovers. The mountain is coming to Mohammed.

Wallace Mitchell, director of the Cranbrook Academy of Art galleries, has assembled a show called "Impact" to "call attention to the increasing opportunities for metropolitan Detroiters to know the work of nationally recognized artists."

This show gives recognition to the service three Detroit galleries, The J. L. Hudson Gallery, The Donald Morris Gallery and the Franklin Siden Gallery, give to our area by importing the best in contemporary art available.

Each gallery was invited to select the works of 12 artists for exhibition in the Cranbrook galleries.

Artists of this caliber are too individual to be able to type the gallery. There is only a hazy discernible direction or preference with each gallery. The Hudson's gallery tends to like works of impressive technical excellence and a warmth of painted textures. They also include a number of traditional contemporary artists.

The Franklin Siden Gallery tends to be most "way out" in selecting the newest of the New York school of painters who have "arrived." Rarely have I seen a passive work in their gallery.

The Donald Morris Gallery aims to get the established contemporaries, ones that you "ooh" and "ahh" at the names alone.

A PAINTING that seemed to unreeled the longest story was Malcolm Morley's huge white canvas. (It is everyone's right and privilege to interpret contemporary paintings.) To me it seemed that the artist had hoped to paint an exquisite white expanse to possess his life was an orderly, supreme experience.

But little wily's keep popping up all over. They wrinkle and pique the pristine surface, they tear through

to expose all the complex detailed realities of existence. They mar the smooth facade and yet how much more exciting these details make the experience of viewing.

De Kooning's little screen door mouthed character, Goodenough's boat full of people and Alan Davie's diverse colors all reflect the influence of children's clarity of artistic vision and expression.

You just have to see O'tava Landry's gigantic aorta entitled "Essential surface, Sea Eluster" to believe it. He has amazing command of a renaissance technique magnified for impact.

THERE ALSO seems to be a renaissance of interest in witchcraft. McLaughlin shows a somber warlock (male wily) and Thompson's "The struggle" epitomizes a wild Sabbath scene. Red, purple and green creatures wrestle a yellow figure under the demonic approval of a huge black dominating figure. Will he win his soul or will they?

I enjoyed the wild force of Karl Appel's rambunctious oil, but I missed his wild color range. This same feeling was true with some of the other works. They were minor works by major artists and whetted my appetite for their best.

The paintings are highlighted in the gallery on hanging cubes and high-ceilinged walls. Wally Mitchell, assisted by a design student, manages their usual impressive job of hanging a show.

There are two other shows in the gallery, "Animals in Art" for the Young People's Art Center and works from the permanent collection.

## Local Seaman To Attend Harvard

Larry S. Hatt, 487 Smith, Birmingham, son of Mr. and Mrs. Howard Hatt, will soon enter the nuclear recruit training program of the U.S. Navy.

Hatt, a 1961 graduate of Seabold High School, is presently in basic training at Great Lakes, Ill. Under the nuclear program, he will receive 2½ years of study at Harvard University.

## Marygrove Invites High School Seniors

Woman's work, her status in the business and professional world, and her changing role in those connections with the college and the U.S. Department of Labor, will be topics under discussion at the third annual Women's Career Conference at Marygrove College from 1 to 5 p.m., Oct. 21.

The conference, planned by the Detroit Business Women's Club in cooperation with the college and the U.S. Department of Labor, will host area high school seniors, counselors, placement officers and college and university women.

De Kooning's little screen door mouthed character, Goodenough's boat full of people and Alan Davie's diverse colors all reflect the influence of children's clarity of artistic vision and expression.

You just have to see O'tava Landry's gigantic aorta entitled "Essential surface, Sea Eluster" to believe it. He has amazing command of a renaissance technique magnified for impact.

THERE ALSO seems to be a renaissance of interest in witchcraft. McLaughlin shows a somber warlock (male wily) and Thompson's "The struggle" epitomizes a wild Sabbath scene. Red, purple and green creatures wrestle a yellow figure under the demonic approval of a huge black dominating figure. Will he win his soul or will they?

I enjoyed the wild force of Karl Appel's rambunctious oil, but I missed his wild color range. This same feeling was true with some of the other works. They were minor works by major artists and whetted my appetite for their best.

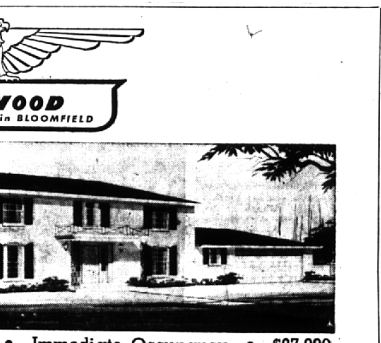
The paintings are highlighted in the gallery on hanging cubes and high-ceilinged walls. Wally Mitchell, assisted by a design student, manages their usual impressive job of hanging a show.

There are two other shows in the gallery, "Animals in Art" for the Young People's Art Center and works from the permanent collection.

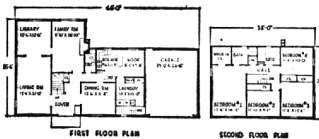
## Local Seaman To Attend Harvard

Larry S. Hatt, 487 Smith, Birmingham, son of Mr. and Mrs. Howard Hatt, will soon enter the nuclear recruit training program of the U.S. Navy.

Hatt, a 1961 graduate of Seabold High School, is presently in basic training at Great Lakes, Ill. Under the nuclear program, he will receive 2½ years of study at Harvard University.



the Normandy • Immediate Occupancy • \$37,900



HOMES OPEN from 11 a.m. to 8 p.m. Monday through Friday and Sunday. Until 6 p.m. on Saturday. Closed on Thursdays.

KIRKWOOD PHONE: MA 6-7522

**THOMPSON-BROWN Company**  
The Best Choice For Buyers of Better Homes  
19426 GRAND RIVER • KENWOOD 1-8700



Four bedrooms, 2½ baths, library. Large basement, 1st floor laundry. A large, exciting residence designed in the classic French Provincial style. Beautifully landscaped lot, exquisite carpet and drapes included. Kirkwood residents have a Birmingham mailing address. Children attend Birmingham schools. Shopping centers and the City of Birmingham are only minutes away.

# THE KEATING COLUMN

Vernor Estates  
Open Daily 1-6



## READY TO MOVE IN!!!

Here's one of the most striking contemporary homes we've seen. It has everything you need for modern living. Five Bedrooms \$61,500.00



## CHOOSE YOUR DECOR

Quality construction by Ross-Pregerson is the Hallmark of this traditional home. The floor plan is most delightful with 5 bedrooms, 1 on the first floor. \$59,900 and worth it.



## NEARLY READY FOR YOU

The clean lines of this striking multi-level house will make it an area show-place. If you buy now you can choose all interior colors and the fun of planning the decor. 4 Bedrooms, 3½ baths. \$59,900



## SURPRISE PACKAGE

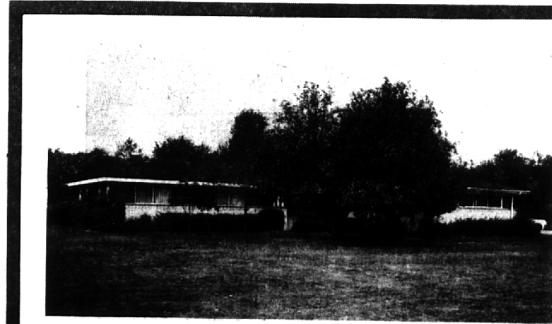
When you see the interior of this lovely traditional house, You'll be surprised at 1. Its size (much larger than it looks). 2. Its charm (delightfully different approach to living areas). 3. Its quality (the builder has put 20 years experience into its construction). 4. Its price (lower than you'd expect).



KEATING OF BIRMINGHAM

325 SOUTH WOODWARD AVENUE  
BIRMINGHAM, MICHIGAN, JO. 6-5121 MI. 6-1254

Vernor Estates  
is just West of  
Lahser South of  
Long Lake Road



## Country Living

is enjoyed in this 4 bedroom BRICK RANCH HOUSE School bus to all schools.

- Meadowlark — Berkshire — Groves schools
- Large family room adjacent to jalousied porch
- 18 foot family kitchen
- New (one month) carpeting in living room, Dining ell and Hall
- New draperies throughout except family room
- Fireplace in Living room and Family room
- Landscaping excellent
- Beautifully redecorated
- Attached 2 car garage
- Walnut Lake privileges
- \$32,000.00

FOR INSPECTION, CALL JOHN D. MAYNARD

# Berndt, Etter & Van Maaren, inc. realtors

for additional information PHONE 644-3500

360 HAMILTON BIRMINGHAM, MICHIGAN 48011