

Name Watts Wacker Chairman in Drive

Watts Wacker, of 310 Puritan, Birmingham, has been named chairman of the communications group of the 1964 United Foundation Torch Drive. A senior vice president at D. P. Brother & Co., Wacker will direct the efforts of four solicitation teams charged with raising a total of \$512,000. Wacker's group will be responsible for contacting advertising agencies, members of the media, and graphic arts and advertising specialties firms in the Detroit area. The Torch Drive begins Oct. 20 and runs through Nov. 12. Overall goal of the campaign this year is \$3,850,000.

Ethan Allen
EARLY AMERICAN FURNITURE AND ACCESSORIES
More gracious living with the best of yesterday for Today.
• Park Free In All Lots
• Open Thursday, Friday, Saturday 'Til 9

Phone LI 3-1330
Royal Oak Furniture Co.
215 S. WASHINGTON AVE. ROYAL OAK, MICH.
AT THE NEW PARKING LOT

WE GOT SO
BA
cause we charge so little
rent a car from **ECONO-CAR** 399
Price includes gas oil, insurance for Valiant; other Chrysler cars also available. Try our service—call.
1516 S. Woodward
Just North of 10 Mile Road
Phone 512-1161
Royal Oak
24 Hour Telephone Service



They Watched High Style All the Way

Mrs. Gordon Areen (from left), Mrs. Walter Simons and Mrs. William Wiggins were among hundreds of local women who attended the eighth annual fall fashion and car show at the Convent of the Sacred Heart, Bloomfield Hills, Sept. 30. Clothes by Claire Peurone and the '65 cars by Chrysler, Ford and GM combined to make an exciting afternoon and evening. Proceeds go into the school's Building Fund.

'Gals for Goldwater' Director Speaks to GOP Women's Club

The Beverly-Franklin Republican Women's Club will meet Wednesday at the home of Mrs. W. R. Stinson, 92767 Robinhood Dr., Beverly Hills. The 9:30 a.m. meeting will start with coffee and at 10 a.m. Mrs. Stewart M. Rice will speak on "The National Ticket." After a 20-minute talk, Mrs. Rice will answer questions. An early WAC volunteer, Mrs. Rice's tour of duty included being private secretary to Lt. Gen. Jimmy Doolittle in the United States and England. She is the only woman on the board of directors

Director at Seaholm

Robert Christensen, associate director of admissions, Evanston, Ill., is meeting with counselors and students at Seaholm High School at 11:30 a.m. today. He will discuss with students the advantages of an elementary teaching career and the current nationwide shortage of 100,000 elementary teachers.

of the Air Force Association. In 1942 she organized "Gals for Goldwater" of which she is the state director, and is also office manager of the citizens for Eisenhower-Miller headquarters at Northland.

Residents Ask For Tree-Saving Program Step-Up

LATHRUP—The city's tree-saving program was under question at the city council meeting Monday night by two Blackstone Area residents, Ken Barry and Don Bloink. The men said they saw evidence of the Dutch Elm disease, cutworms and a general need for tree trimming in their area. Mayor Richard Cogger said that he followed the recommended state program for tree spraying which has cut tree loss from 180 to seven during the past seven years, but that the city had no facilities to go into a tree pruning business.

THE MAYOR ALSO said that the city did not have the manpower to spray trees in backyards, but that the city provided names of firms which dealt in this service. The men said they were speaking on behalf of about ten homeowners in their area who wanted the city to do more in the way of tree spraying and trimming. "It's impossible to take an infected 36-inch tree and replace it," said Bloink. The mayor also suggested that they contact A. U. Littl, chairman of the Forestry Advisory Committee, to see what could be done for them.

Home Building Plans Stir Area Residents

LATHRUP—Despite verbal resistance from homeowners in the Avilla-San Rosa area, the City Council said they had no choice but to vote the subdividing of Lot 966 in that area to provide four lots for new homes. The 1 1/2 acres had up to now been used as a park for youngsters in the area, and homeowners said that had influenced them in their decision to buy in the subdivision. Mayor Richard N. Cogger said, however, that the land was originally zoned residential. "The owner of the land, (Joseph F. Slavik of 18741 Wiltshire) has property rights which cannot be denied. All the council can do is make sure that it is not violating a building or zoning code."

MAYOR COGGER assured the residents that each home would be on lots 100 by 150 feet and would be built on the same quality standards as the rest of the homes in the area. "If we owned the land, we would perhaps put a park on the property, but it is not up to us to decide what should go on the land," said Councilman Vincent Zetell. "We asked we even begged Louise Lathrup Kelley to donate some land for park purposes to the city, but we didn't get any. The legal owners now have the right to build on the property."

B'ham Jaycees To Sell Pumpkins

The month is October and time for the Birmingham Jaycees' annual pumpkin sale. The Jaycees ask that if you are going to buy a pumpkin you let the money help send a deserving student to college. Proceeds from the sale will be used for a \$50 scholarship which is awarded annually to a Birmingham senior. The pumpkins will be sold by donation Oct. 17 and 18 and Oct. 24 and 25 at three locations, northwest corner of Cranbrook and Maple at the First Federal Savings, Derby High School on Adams, southeast corner of 14 Mile and Southfield at Metropolitan Savings and the downtown parking lot at Pierce and Merrill.

GOP Finance Drive Exceeds '63 Donations

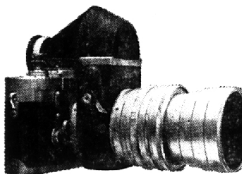
Republican district finance chairmen and their city and township chairmen met on Sept. 24 with Mrs. Allen A. Strom, county-wide chairman of the Republican Neighbor to Neighbor Finance Drive, to report on the amount of contributions collected at the midway point in the annual undertaking. At the meeting, figures for each district were announced and the sum total revealed that donations are running ahead of the same period last year—nearly \$26,000 has been contributed so far as compared with \$21,000 at the same point in 1963.

IN THIS ANNUAL September canvass for funds to support GOP activities, it is estimated that some \$7,200 volunteers are calling on their Republican neighbors for contributions. Charles L. Lyle, GOP county chairman, told the group that administrative costs run 1 1/2 cents per dollar collected as compared with an average 5 cents for other large organizations. Lyle commented that "It is these funds that keep the lights turned on and the phones working at the eight Republican headquarters, that aid the candidates in their campaigns, and that ultimately help win elections. The Party is solely dependent on the voluntary contributions of the citizens for its operation."

Neighbor to Neighbor chairmen reporting included Wayland Blood, District 3 and Mrs. Edward Downs and Mrs. Barney Bannon, District 5.

The strongest bone in the human body is the femur, or thigh bone. The strongest muscle is the serratus magnus, or large muscle of the back.

with the VISOFLEX the rangefinder Leica becomes a through-the-lens camera



The Visoflex is an accessory that enables you to change any rangefinder Leica into a compactly efficient single-lens reflex camera. Choice between rangefinder and through-the-lens photography is not just a matter of taste. Each has definite advantages; that's why both have always been provided for in the Leica System.

When you own a Leica, you may choose from rangefinder-coupled lenses from 21 mm to 135 mm. With that same Leica and a Visoflex, you may choose lenses from 55 mm (shown here with the Visoflex and Leica M-5) to 400 mm. A number of the lenses can be used with both systems. The Visoflex is designed for fast hand-held shooting and eye-level comfort. Enjoy the best of everything in photography with the Leica System.

"Our Right Advice May Save You More Than Price!" Free parking across the street for our customers.



BIRMINGHAM CAMERA SHOP

"Serving Birmingham 25 Years"
168 South Woodward Everything Photographic MI 4-0510
Open daily until 6 p.m., Sat. 'til 5:30 p.m.

KRESGE'S
THURS. FRI. SAT!
SALE of SALES

Women's Flannellette Gowns and Pajamas
Girls' Cotton Knit Pajamas
3 Day Sale! Reg. 1.99! **WARM SLEEPWEAR 147 157**
Cotton flannel gowns and pj's.

1964 Styles for Girls' Women **NEW WOOL JUMPERS**
Girls' 7 to 14 **\$3.99**
Misses' 8 to 16 **\$4.44**
Girls'—Plaids, checks and solids. V-neck, torso and shift styles.
Misses'—Wool and wool blends in solids and checks. Choice of five styles.
GIRLS' POLO SHIRTS, 734.....2.98
WOMEN'S STRETCH POLOS.....2.98

110 Yd. Pcs.—Cotton FLANNELLETTE SALE
Prints, white and pastels. 1-10 yd. pcs. **4 yds. 1**

3 Days—Reg. 2 Pcs. 95¢ **SEAMLESS NYLONS 2.63**
Sheer mesh. 2 Shades. Sizes 9-11.

3 Days—Reg. 79¢ and 51¢ **STRETCH KNEE SOX 57 74**
Fits Sizes 6 to 9 1/2

Chocolate Covered Peanuts
Chocolate Stars
Chocolate Peanut Patties
Peanut Butter Cups
Chocolate Meringues

3 Day Sale! Reg. 39¢ **PLASTIC FLOWERS 27.**
Varieties of mum and dahlia bushes. Single mum.

40 Qt. Swing Top **WASTE BIN 1.99**
Reg. \$2.97
Yellow, Beige, Turquoise

Regularly 59¢ to 69¢! **CHOCOLATE CANDY**
Bought by the Truckload TO SAVE YOU MONEY
Peanut Butter Cups, Peppermint Cups, Bridge Mix, Chocolate Stars, Malted Milk Balls, many more. 1 Lb. .57¢ **2 lbs. 99¢**

IN BLOOMFIELD PLAZA
Telegraph & West Maple
Open Monday, Thursday & Friday Evenings

IN DOWNTOWN BIRMINGHAM
West Maple & Henriette
Open Thursday & Friday Evenings

Katy says "CHARGE IT at KRESGE'S"

DUE TO PUBLIC DEMAND WITBECK'S Will Continue For 10 MORE DAYS

This Tremendous **BLANKET TRADE-IN SALE**

GENERAL ELECTRIC **BLANKET**

Only **\$12.95**

Trade-in ANY OLD BLANKET on a new GENERAL ELECTRIC BLANKET!

WITBECK

Six Blocks North of Nine Mile Road
23365 Woodward Ave., Corner of Woodland, Ferndale

OPEN THURSDAY and FRIDAY 'TIL 9 545-2600 545-2601

Your General Electric Appliance Headquarters
YOU BUY THE BEST FOR LESS AT WITBECK'S