

3 Youths Win Grants Given By Art Center

Glen Michaels, director of the Young Peoples Art Center of the Cranbrook Academy of Art, Bloomfield Hills, has announced the awarding of three scholarships.

Michaels feels that these scholarships will provide direction to talented young people. In the last few years the board of directors of YPAC has increasingly represented a community effort to give scholarships to youngsters who are professional in their approach to their work.

Michaels stressed that young people today through YPAC will have the opportunity to work with and receive direction in the use of a multitude of materials and techniques and fundamental sharpening of their talents.

The scholarships are a culmination of that philosophy. "Scholarships are not a contest," he stated. "They should provide recognition and encouragement to the basically professional student."

MICHAELS SAID that proper encouragement and incentive would mean that an artist could earn his living at his craft 10 years earlier than was possible in the past. The gifted boy or girl leaving YPAC now will have mastered his basic ability and will be ready to assume the responsibility for his talent.

The scholarships were awarded to Gary Sheppard of Warren; George Sachs of Pontiac; and Randy Darwall, 1270 Southfield, Birmingham.

YPAC, originally a project of the Junior League of Birmingham, was turned over to the Cranbrook Academy of Art in 1951 and conducts classes open to all youngsters in the area.

Michaels has the work of his students on display and has invited the public to the gallery to see the exhibit.

The Michigan International Farm Youth Exchange has exchanged 70 youths with 43 foreign countries since its origin in 1947.



Turning Out Pots

Working at the wheel in his Farmington pottery studio is John Parker Glick, instructor of ceramics for the fall session at the Bloomfield Art Association. Glick graduated from Wayne State University and attended Cranbrook Academy of Art as a scholarship student and assistant to Majja Grottel, head of the ceramics department. While at Cranbrook, he received a Louis Comfort Tiffany Grant in ceramics for independent research. After a tour of duty with the U.S. Army in West Germany, Glick returned to his home in Farmington and utilized the grant to establish his one-man studio.

Area Neurologist Appointed to National Board

Dr. John Stirling Meyer, 375 Lake Park, Birmingham, chairman of the department of neurology at Wayne State University's School of Medicine and director of neurology at Harper Hospital, has been named to the National Advisory Council to the National Institute of Neurological Diseases and Blindness.

The appointment, effective Oct. 1 for a four-year term, was made by the surgeon general of the United States Public Health Service.

Composed of doctors in various medical specialties and others in the health field, the council advises the surgeon general on research, control, prevention and education of diseases of the nervous, muscular and sensory systems involving blindness, deafness, strokes and other disabling disorders.

IN MARCH of this year, Dr. Meyer was appointed by President Johnson to a newly established national health commission which recommends ways to reduce the disability and death rate from heart, cancer and stroke.

Since joining the Wayne staff in 1957, Dr. Meyer has gained international attention through his research in cerebrovascular diseases including the effects of drugs in treating stroke victims.

THE KEATING COLUMN

Sales still continue at a very fast pace! The market is strong and we would advise you to list NOW if you've been planning on selling in the near future. You can obtain the Services of a trained Keating Counselor to give you a market estimate of your home. No obligation, of course.

G. Gordon Walker
Executive Vice-President

WE GOOFED!



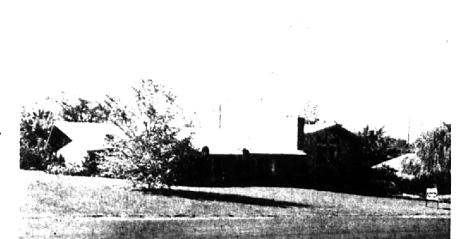
We ran this house last week and said it was in Bloomfield Village. Several of our alert readers (we're happy for same) called Judson Bradway about it and our good friend Brad wrote us a clever note about it. Well here's the retraction—the house is on a superb site on beautiful Puritan Drive in BIRMINGHAM. Everybody happy? Now let's sell it. A terrific buy at \$36,900.00. It has everything. Call now for a showing.

★ ★ ★ ★ ★

A "MUST SELL" TRADE-IN HOME

★ ★ ★ ★ ★

ARTIST? DESIGNER? HOBBYIST?



This delightful home has not only excellent living accommodations but ALSO a bright studio with extra height and its own living facilities, including a separate entrance. Near Kirk-in-the-Hills on a rolling site. It has everything for comfortable living and we believe it's well priced at \$41,900.00.

NEAR SEAHOLM



The kids can walk to school and outside activities too, from this home. In immaculate condition. It has three bedrooms, den and a beautifully finished "rec" room. Many special features. \$41,500.00.



327 S. Woodward

MI 6-1234

Ready for Workshop

Getting set at Siegel's to offer tips for a grooming workshop at The Community House are (front row, from left) Laura Hughes and Sylvia Smart, members of the Young B. Siegel Panel; (second row) Rimi DuBois of the panel and Mrs. Genevieve Carlson, assistant manager of Siegel's Birmingham store; (third row) panelist Pat Maxon and Pauline Wilson, manager of the children's department and of the junior workshop which is sponsored by Siegel's.

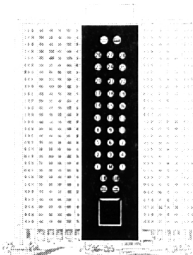
Resident to Sing In U-M Glee Club

Arch H. Copeland, 1020 Chestnut field, Birmingham, is among the 140 students, in 1959 and 36 new men selected by the University of Michigan Men's Glee Club this fall.

The organization, whose membership now stands at 84, was every college and school of the International Music Festival for male choruses at field, Birmingham, is among the 140 students, in 1959 and 36 new men selected by the University of Michigan Men's Glee Club this fall.

The new men range in class standing from freshmen to graduate students and represent nearly 40 states with 13 foreign countries since its origin in 1947.

Push any button!



Floors 1 through 28 are alike in one respect: They offer the most exciting luxury apartment living in Detroit's Lafayette Park.

336 units. Studios, 1, 2, 3, 4 bedrooms • Underground parking From \$140 per month

1300 Lafayette East E. LAFAYETTE at RIVARD
DETROIT 7, MICHIGAN

FURNISHED MODELS OPEN EVERY DAY 9 A. M. TO 8 P. M.

Visit, write, or phone: 962-7400 for leasing information



IMAGINE ALL THIS FOR LESS

than \$1,000.00 down and closing costs. You wouldn't have to spend another penny on this beautifully maintained house. All freshly decorated with beautiful carpeting and drapes. There is a powder room and a full bath on main level. 3 good sized bedrooms, living, dining room with studio ceiling. Also a full basement with tiled recreation room. An easy walk to Birmingham Schools. \$19,900. Ask for Alice Rutten.

CHARLES J.

VAN HORN INC.

From Birmingham MI 6-2400
576 N. Woodward Ave.

From Detroit JO 4-5444
Birmingham

Calendar of Cultural Events

Thurs., Oct. 8
BIRMINGHAM MUSICALS — Members hold first meeting with program featuring soprano soloist Geraldine Montross, accompanied by Mrs. Wendell Holmes, and duo-pianists Blodwyn Stephenson and Joyce Jackson. At 1:30 p.m. at The Community House, Birmingham.

THAM TOWN HALL — Broadway and Hollywood star Kitty Carlisle is speaker at 11 a.m. in the Birmingham Theatre. Admission by season ticket only.

BRIDGE — Birmingham Duplicate Bridge Club at 7:45 p.m. at Birmingham YMCA, Master Point Night.

BLOOMFIELD ART ASSOCIATION — Centennial exhibition, "Review and Preview." Show continues through October. Hours 2-5 p.m. Mon.-Fri. and 1-5 p.m. Sat.-Sun. on Lone Pine Rd., Bloomfield Hills. Admission charge.

CRANBROOK INSTITUTE OF SCIENCE — Skillman Wang for the Physical Sciences with exhibit "Experiments in Physics." Hours 2-5 p.m. Mon.-Fri. and 1-5 p.m. Sat.-Sun. on Lone Pine Rd., Bloomfield Hills. Admission charge.

LITTLE GALLERY — "Eyes on New England," exhibition of art work by Joseph Barber and Jack Valle at 915 E. Maple, Birmingham. Show continues through Oct. 24. Hours 9 a.m. to 6 p.m. Tues.-Sat.

JAPANESE ART SHOW — Works by artist Kiichi Usui on display in the Oakland University Art Gallery through Oct. 12. Hours 12:30-4 p.m. Mon.-Fri. and 2-5 p.m. Sun. in Rochester.

THE RAVEN—Folk guitarist Dick Rosmini at 9:30 p.m. at The Raven Gallery, Birmingham. Admission charge.

THE RAVEN—Folk guitarist Dick Rosmini at 9:30 p.m. at The Raven Gallery, Birmingham. Admission charge.

THE RAVEN—Folk guitarist Dick Rosmini at 9:30 p.m. at The Raven Gallery, Birmingham. Admission charge.

at The Raven Gallery, Birmingham. Admission charge.

Sun., Oct. 11
THE RAVEN — Duo-recording with folk guitarist Dick Rosmini at 9:30 p.m. at The Raven Gallery, Birmingham. Admission charge.

Mon., Oct. 12
BRIDGE — Community House Duplicate Bridge Club at 7:45 p.m. at 380 S. Bates, Birmingham.

BIRMINGHAM — BLOOMFIELD POETRY CLUB — Fall dinner at 8 p.m. at Alban's, Birmingham.

Tues., Oct. 13
BRIDGE — Birmingham Duplicate Bridge Club at 12:30 p.m. in home of Mrs. Stuart Murphy, 2424 Manchester, Birmingham. Master Point Night.

ORGANIST DON BAKER — Birmingham Lions Club presents annual benefit concert at 8:30 p.m. at Groves High School auditorium. Admission charge.

CRANBROOK ACADEMY OF ART—"Impact—Source Twelve" exhibition of contemporary paintings from three Detroit galleries at Cranbrook Art Galleries, Bloomfield Hills. Through Nov. 8. Hours 2-5 p.m. Tues.-Fri. and 1-5 p.m. Sat.-Sun. except for major holidays. Admission charge.

ANTIQUÉ SHOW AND SALE — Chapel Choir of Cross of Christ Lutheran Church sponsors three-day event at Church Fellowship Hall, Bloomfield Hills. Hours 11 a.m.-10 p.m. daily. Admission charge.

SOUTH OAKLAND SYMPHONY SOCIETY—Marilyn Dubow is guest violin soloist at 8:15 p.m. at Oak Park High School. Admission charge.

THE RAVEN—Folk guitarist Dick Rosmini at 9:30 p.m. at The Raven Gallery, Birmingham. Admission charge.

Wed., Oct. 14
BRIDGE — Birmingham-Bloomfield Area Bridge Club at 7:45 p.m. at Birmingham YMCA.

THE RAVEN—Folk guitarist Dick Rosmini at 9:30 p.m. at The Raven Gallery, Birmingham. Admission charge.

ANTIQUÉ SHOW AND SALE — Chapel Choir of Cross of Christ Lutheran Church sponsors three-day event at Church Fellowship Hall, Bloomfield Hills. Hours 11 a.m.-10 p.m. daily. Admission charge.