

Arts Program Features OU Music Professor

"An Afternoon in the Arts" is the theme of the Birmingham Branch, American Association of University Women, opening program at 1:30 p.m. Wednesday at The Community House, Birmingham.

Dr. David DiChiera, assistant professor of music at Oakland University, will present a discussion and illustrations of various musical styles. The program will also include a discussion of Dr. DiChiera's own music and the playing of one of his works.

BEFORE COMING to Oakland University Dr. DiChiera taught at UCLA where he was graduated in 1956 with highest honors, honorary membership in Phi Beta Kappa and a bachelor of arts degree.

Continuing studies led to a master's degree in composition, a doctorate in musicology and additional awards including the Atwater Kent and Gershin awards.

In 1958, Dr. DiChiera received a Fulbright award for further study in Italy. He was commissioned by the U.S. Information Service to compose a piano sonata for the Naples festival of contemporary Italian and American music. The work was broadcast nationally and highly praised by the Italian Press.

Along with the musical lecture and recital, there will be an informal art show by members of AAUW's Hobby Painters, Mrs. Walford Patton, 1617 Yorkshire Road, is chairman.

TEA CHAIRMAN, Mrs. Douglas Keys, 875 Lake Park Drive, has planned time to view the artist's degree in composition, a doctorate in musicology and additional awards including the Atwater Kent and Gershin awards.

Rose Group Cites Resident's Bouquet

Frances Vonkoss, 1355 Melton Road, Birmingham, has been named a winner of 1954 Fall Show Awards by the Detroit Rose Society. Her "Old Rose Bouquet" received a rosette for best entry in the section entered. The show was held Sept. 26-27 at the Detroit Historical Museum.

interested in welcoming its new members on this occasion.

Mrs. Howard Berg, 4349 Fox Hill Drive, membership chairman and chairman of the day for this event, may be contacted by prospective members. The AAUW now lists more than 850 institutions whose graduates are eligible for membership.

The Birmingham Branch is designed to offer college women an opportunity to grow intellectually, to help further their advancement and to discharge their social responsibilities.

Tours

(Continued from 1-D)

"The Severe Head," Joan Fontaine in a well-received drama by J. B. Priestley.

"Poor Bits," excellent historical drama about Robespierre.

"Wait a Minim," South African review, with an all-white cast, "most talented group" Bagz has ever seen.

COMPARING British and American theatre, Bagz observes that Londoners see their avant garde in the heart of the theatre district, while New Yorkers must go off-Broadway. But many of the experimental shows such as "The Persecution, etc." are produced by the Royal Shakespearean Repertory Theatre.

Because it is subsidized, it can afford to be more daringly, wildly experimental, Bagz speculates.

He noted a healthy lack of commercialism in British theatre.

"The British don't pay their stars the exorbitant salaries we pay

here," says Bagz. "More people can afford to go to the theatre.

The most expensive theatre ticket in London costs the same as a top row balcony seat on Broadway.

WHILE LONDONERS love their excellent musicals and hilarious comedies, Bagz notes a greater British willingness to support serious drama and artistic innovations.

"Many Broadway shows are staged for the tourists who go to New York to be entertained," observes Bagz.

During his six weeks on the continent, there were other theatrical highlights. Most memorable was a visit to the Amsterdam garret where Anne Frank and her family hid from the Nazis during World War II.

Just as Anne once did, visitors can now climb to the secret passageway behind a bookcase. They can walk through the empty rooms into Anne's room. There on the walls are arithmetic problems she wrote and movie star pictures she loved, just as Anne left them.

THE BUILDING itself has been

remodeled into a handsome structure.

"It honors the thousands of Jews who hid during the War, and hid in vain," says Bagz. "Mr. Frank comes back every few months, and he maintains it."

Dick Bagz played the role of Anne's Grandfather, Peter, in Birmingham Village Players' production of "The Diary of Anne Frank."

"It was strange to look through the actual windows, after I had peered through their replicas on a stage set," he remarked.

At Stratford, England, Bagz found that a visit to the magnificently staged Shakespearean exhibition was "like moving in a living piece of modern art."

BUT TICKETS for Shakespearean Festival performances were unobtainable, even though he first applied last November through British friends.

Now he's plotting to make up for that serious omission in a theatre lover's tour.

Says he, "I hope to go back and see the Shakespeare plays next summer."



CHECKING ANTIQUES FOR THE SHOW AND SALE Mrs. William Fahringer (left), general chairman of the show, and Mrs. Doris Ballentine of Green Shutters, Clarkston

15 Antique Dealers Set for Church Event

The Chapel Choir of Cross of Christ Lutheran Church will sponsor an Antique Show and Sale Tuesday, Wednesday and Thursday in the Church Fellowship Hall on the corner of Telegraph and Lane Pine roads, Bloomfield Hills.

The hours of the show and sale will be 11 a.m. to 10 p.m. daily. Luncheon will be served daily from 11 a.m. to 2 p.m.

There is parking in the church lot of Lane Pine Road.

Among the 15 dealers participating are Continental Clutter, Detroit; Mrs. Maude Cook, Birmingham; The Old Colonial Shop, Oxford; Green Shutters, Clarkston; Y-Knot Shop, Holly; Antiques Anonymous, Beavercreek; Dawling's, Bloomfield Hills; Now & Then Shop, Mrs. Emogene Davis, Southfield; Frederick's Jewelers, Detroit; Troy Corners, Troy; Antiques by Annis, Southfield; Romeo Country Store, Romeo; Mrs. Marion Zell, Farmington; and The Quaker Bonnet Shop, Troy.

MSU Loaning 500 Books to Baldwin Library

Baldwin Public Library shelves are now richer by some 500 books loaned from the Michigan State Library.

In making this announcement, Library Director Jeanne Lloyd stressed that these books do not in any way take the place of the regular book purchases of the Birmingham library but act as a supplement. The loan is made possible through federal and state funds.

The new "loaners" include both fiction and nonfiction, adult and juvenile—all available for home borrowing and all representing latest releases of the publishers. In a majority of cases, these act as additional copies of titles recently added to the permanent collection or currently on order.

EVENTUALLY THE BOOKS on three-year loan from the Michigan State Library will increase into the thousands for Birmingham and Bloomfield Township as part of Michigan's program of interest-free grants to communities cooperating in library systems.

Baldwin, at 431 Martin, now serves not only Birmingham but residents of Beverly Hills, Bloomfield Hills and Bloomfield Township. For the new Township Library, opening shortly on Telegraph just south of Long Lake Road, the Catalog Department of Baldwin Library has been busily at work in recent months, cataloging thousands of books for the new bookshelves.

MRS. DORIS Ballentine of Green Shutters will show a pine table with two drawers, fluted legs and iron hardware, a Lincoln rocker, matching walnut Victoria chairs, wash stands and other items.

David Frederick's, jewelers of Detroit, will display antique jewelry of all types. The Frederick's suggest that anyone having questions about their old jewelry or having pieces of jewelry that need to be restored bring them along. They also make an exact copy of an earring that has lost its mate.

An unusual booth in the antique show will belong to the Romeo Country Store which will have cheeses and candies in at atmosphere of yesterday.

Mrs. Mae Redman of The Old Colonial Shop in Oxford will show among other items a tilt-top table more than 150 years old and a bonnet commode.

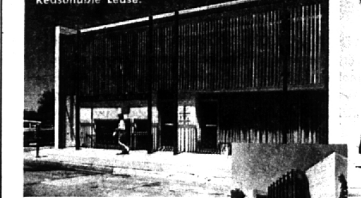
MRS. MAUDE Cook of Birmingham will bring an old walnut spoon cabinet and a large variety of clocks: grandmother's clocks, school clocks and regulator clocks.

Antiques by Annis in Southfield will feature a Viennese clock, German steins and tiffany lamps.

Mrs. Sue Fetters of Troy Corners is planning to bring a Pennsylvania country grand father's clock with the original hand stenciling which dates back to 1800, also a Pennsylvania country kitchen table of black walnut which is hand-pegeed and dates to 1820.

an ADDRESS with DISTINCTION

Available soon, one office suite with private entrance (see inset), air conditioning, central location near Demery's, Restaurants, Parking.



FOR INFORMATION CALL Snyder, Kinney and Bennett Ask for Mr. Gaffill

Snyder, Kinney and Bennett Ask for Mr. Gaffill

CITY COUNTRY

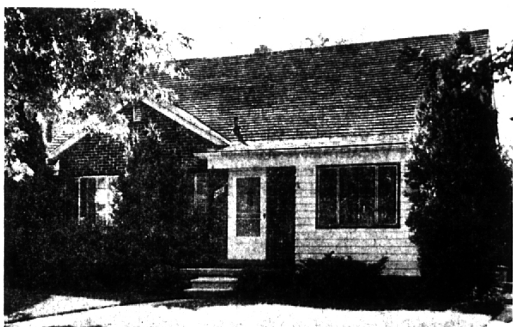


5-Bedroom Colonial—Authentic Williamsburg design on lovely corner (2 lots) with majestic mature trees.

Excellent City area within walking distance to Schools and Shopping. Established, stable neighborhood.

- Large living room with fireplace. Separate Dining room.
- NEW KITCHEN with built-in oven and stove.
- NEW wool carpeting in hall and stairs.
- 4 Bedrooms on 2nd floor, 5th on 3rd floor. 3 full Baths. Brick privacy wall from house to garage and Swimming Pool in secluded back yard.
- Basement includes tiled large Recreation room, workshop, hobby room, dark room.

PERFECT FOR A LARGE ACTIVE FAMILY. Priced at \$41,500.



Ranch with Full Basement in a friendly, well-kept subdivision. A short WALK TO SCHOOLS AND SHOPPING.

- 20-foot Living-Dining room has fireplace.
- Kitchen has Breakfast space.
- 2 Bedrooms on first floor. 2nd floor is easily finished into one large or two smaller rooms.
- There is a sliding glass thermopane window wall to Patio.
- 1½-car detached Garage.
- The yard is lovely with pretty trees.

THIS IS EXCELLENT for a young couple or a retired couple or a small starting family. A good resale and mortgage area. Priced at only \$16,900.



Long Ranch on Large Site in well diversified subdivision—not too far from town. Site is 200 feet deep.

Excellent all brick construction with informal living area all in the back. Also a Patio.

- Center entry of slate opens to living room with fireplace and to Bedrooms.
- Large Family room and combination Dining room.
- Kitchen with built-ins and also good eating space.
- 3 good Bedrooms, 2½ Baths.
- Plastered Garage. Aluminum storms and Screens.
- Carpeting and Draperies included. Telephone jacks in each room.

THIS WAS A MODEL HOME and shows it. Priced well at \$29,900.



Wing Lake Colonial—5 Bedrooms—Handsome home on 3 lots (180 frontage about 215 ft. deep) with all LAKE PRIVILEGES. Swim and boat in summer. Skate in winter.

- 25x15 Living room with fireplace.
- Separate Dining room with Bay.
- Pine Paneled Library, Jalousied Porch.
- Brick-walled Patio. Terrace lights. Fine trees.
- 4 large Bedrooms on 2nd floor, 2 full Baths.
- First floor 5th Bedroom or maid's room. Full Bath and Lavatory.
- Tiled and Paneled Recreation room with fireplace.
- Walk-in attic storage. Cedar closet. Electric garage openers.
- 6 telephone outlets. Some Carpeting included.

WE THINK THIS IS A REAL VALUE AT \$39,900.

SNYDER KINNEY & BENNETT
INC.
Realtors

239 S. Woodward, Birmingham
32740 Franklin, Franklin

MI 4-7000
MA 6-9600