

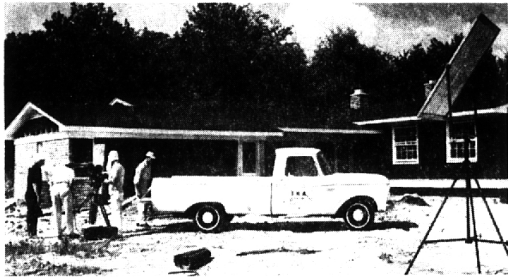
**Schedule Reception**

A reception open to the public will be held from 2 to 6 p.m. Sunday at The Studio Gallery of Art in Highland Park, a new gallery currently exhibiting oils and paintings by George Vilos, 187 E. 11 Mile Road, Birmingham. The one-man show had its official opening for the press and special guests last week.

**Writer's Workshop Plans Study Group**

The Oakland Writer's Workshop met Thursday in Pontiac. A short story manuscript by Mary Buffmyer was read and criticized. Literary markets were discussed. Mrs. Reba Netzer announced that the YWCA was moving to a new location and would have a nursery for members with small

children. Mrs. Netzer also announced that a new series of study groups was to begin Monday. An invitation is being extended to persons interested in writing to enroll in Oakland Writer's Workshop. For information, residents may phone Noel Loveland of Orchard Lake.



the **ETHAN ALLEN...** choice of **FORD MOTOR COMPANY**

Action... camera... roll 'em! These were the words echoed at Bloomfield in the Hills recently as the filming crew for The Ford Motor Company photographed Ford's new line of '65 trucks. The film... currently being viewed by Ford dealers from coast to coast, features (in one of its supporting roles) The Ethan Allen, a long... low... sleek ranch designed, built and copyrighted by The Herman Frankel Organization. One of 4 models presently on display from \$28,400. The Ethan Allen was selected in February by 2-out-of-3 1964 Idea Home Winners as well as grand prize winner Mrs. James Karalash of Dearborn and on February 29, 1964, The Ethan Allen was featured in an unsolicited front page article by Detroit Free Press Real Estate Editor, Jack Woerpel. Your acceptance, however, is the most important of all. Come see The Ethan Allen this weekend.

Location: Square Lake Road between Telegraph and Woodward in Bloomfield. Models open daily and Sunday, 12 N-8 Pm; Saturday 12 N-6 PM. Copyright 1964 The Herman Frankel Company.



**Ballet Opens Season**

The South Oakland County Community Concert Association will begin its 1964-65 season by presenting "Ballet '64," a new group of 12 dancers from the San Francisco Ballet at 8:15 p.m. Friday at the Oak Park High School auditorium. The dance ensemble will present a balanced program of works ranging from the very classical to the contemporary (Bach to Stravinsky). Organized four years ago, the group has been described as having a certain vigor and spirit in presenting new works, not possible with a large group.

**Movie Guide**

Parenteen Committee  
Birmingham P.T.A. Council  
Green Sheet National Legion of Decency

MOVIE	A-MY-Y	B
Cleopatra	A-MY-Y	B
The Three Lives of Thomasina	GA	A-1
A Tiger Walks	GA	A-1

\* recommended as superior entertainment especially for children

**CODE GREEN SHEET**

These audience symbols are intended as broad guides to selection, and do not indicate either recommendation or non-recommendation of the films to which they are applied.

- A Adults
- MY Mature Young People
- Y Young People (12 years to 16 years)
- C Children (unaccompanied by adults)
- GA General Audience
- NATIONAL LEGION OF DECENCY
- A-1 Morally Unobjectionable for General Patronage
- A-2 Morally Unobjectionable for Adults and Adolescents
- A-3 Morally Unobjectionable for Adults
- B Morally Objectionable in Part for All
- C Condemned
- SC A separate classification is given to certain films which, while not morally offensive in themselves, require some analysis and explanation as a protection to the uninformed against wrong interpretations and false conclusions.

**Former Resident Stars in Play**

Fifteen years of silence ended Thursday as the old Lyric Theatre in Lapeer opened for the first performance of the play "Claudia". The production was the first effort of a newly-organized community theatre group, the "County Players". The title role was played by Judy Eastburn, former Birmingham resident, and presently a reporter with the Lapeer County Press.

THE LYRIC Theatre opened in 1921 and lived through the days of the Roaring Twenties, talking pictures, the Depression, the New Deal, Hitler and World War II. Television proved fatal, and the Lyric closed in 1949.

For 15 years the former home of John Barrymore, Greta Garbo, Charlie Chaplin and countless vaudeville acts had stood still. Thursday and Saturday the old stage came alive again.

**Broadcasters Hear Ad Agency Director**

Ernest A. Jones, president, MacManus, John & Adams, was the keynote speaker at the American Women in Radio and Television East Central Area Conference last week end in Detroit. Jones, who lives at 990 Cranbrook Road, Bloomfield Hills, discussed "Are Television and Radio Here to Stay?"

**Clubwomen See 'First Ladies' Costumed Dolls**

A model of the White House and costumed dolls of the First Ladies highlighted a talk by Mrs. D. Dwight Struthers before the October general membership meeting of the Village Woman's Club. Mrs. Struthers, a resident of Cross Pointe, drew upon her detailed knowledge of the Presidents' lives and wives to present illustrated glimpses into their personalities, their social entertaining and their interests and humor.

IN ORDER to accommodate the large number of reservations, meetings were held at the clubhouse on two successive days, Tuesday and Wednesday. At the reservation tables were Mrs. Earl Cannon, Mrs. Arthur

**Student to Sing In College Choir**

John McDouglass, a sophomore at Taylor University (Upland, Ind.), has been named a member of the 75-voice Taylor University Choral. He is the son of Mr. and Mrs. John McDouglass, 655 Hamilton Road, Birmingham.

The choir travels extensively throughout the east and midwest. Taylor is a 119-year-old Christian liberal arts college with an enrollment of 888 students.

Hostesses were Mrs. Edwin Lape, Mrs. Paul McDonald, Mrs. A. E. Purman, Jr., Mrs. Clyde C. Bennett, Jr., Mrs. Richard Kelley, Mrs. Donald Hirschman, Mrs. W. E. Chickering and Mrs. John Thornhill.

**FOR LEASE**

5,500 sq. ft. industrial space in new building under construction in Birmingham Airport Industrial Subdivision at Maple and Coolidge. Will finish to your specs with room for expansion. Occupancy September 1, 1964.

Simone & Co.

273-8300

**DID YOUR NEIGHBORHOOD...**

... just grow—or was it well planned?

see *Overbrook*\*

**MAX BROOCK INC.**

MI 4-6700

\*Paved roads, water, sewer, underground utilities.



PANORAMIC VIEWS IN ALL DIRECTIONS — from this Bloomfield Hills home near Cranbrook. Four large bedrooms, two bathrooms and two lavs. Exceptionally large family room. Kitchen with built-in oven and range. Carpeting and draperies included. Lovely interior—a joy to show!



IN A HURRY? Can't go wrong with this three bedroom 2 1/2 bath home. It's VACANT—Move right in! 20 foot family room. Built-in oven and range. Radio intercom. Garage door opener. Carpets and draperies. \$27,500.00.



SPECIAL HOME—INTENDED FOR SPECIAL PEOPLE. See this Bloomfield Village home with hi-level livability now. Four bedrooms and 2 1/2 bathrooms. Dining room, library and beautifully paneled recreation room with bar. Kitchen with built-in oven and range. Breakfast space. Screened porch. BEST OF EVERYTHING.



A TRANSFERRED FAMILY makes this home available for \$19,750. Three bedrooms with space for 4th. bedroom or a den. Two bathrooms plus lav. Screened porch. Paneled recreation room. A wonderful buy and in a great neighborhood.



LUXURIOUS SHOWPLACE — IN BLOOMFIELD VILLAGE. Five bedrooms, four bathrooms and two lavs. Library, dining room, family room and outstanding recreation room with bar. LISTEN while we tick off a few of the luxury items: lawn sprinkling system. Deluxe paddock swimming pool. Air-conditioning. Aprilaire humidifier and air-filter. And more. Lots more. \$89,500.00.



TREES—A MILLION DOLLARS WORTH! Plus a lovely home with three bedrooms. Dining room, paneled library and glassed-screened porch. Near Quarton school. Air-conditioned. Owners transferred—Quick possession. Good buy!

**Weir, Manuel, Snyder & Ranke, Inc.**

298 South Woodward

Birmingham, Michigan Realtors

Birmingham 644-6300

Phones: From Detroit 566-2323