

# This Week's TV Listings

(Continued from Previous Page)  
 7:00 (7) News  
 7:05 (2) Meditations  
 7:10 (2) News  
 7:15 (2) Let's Find Out  
 7:25 (4) 1st Edition News  
 7:30 (2) Gospel Time  
 (4) Country Living  
 (7) Hour of St. Francis

8:00 (2) Electricity at Work  
 (4) Industry on Parade  
 (7) Water Wonderland  
 8:15 (2) News  
 (4) Davey and Goliath (C)  
 (9) Sacred Heart  
 8:30 (2) Mass for Shut-ins  
 (4) Catholic Hour  
 (7) Eleanor Roosevelt  
 (9) Constitution  
 (9) Temple Baptist Church  
 9:00 (2) With This Ring  
 (4) Church at Crossroads  
 (7) Showplace Homes  
 (9) Oral Roberts  
 9:15 (2) To Dwell Together  
 9:30 (2) Let's See  
 (4) Bozo (C)  
 (9) Christophers  
 10:00 (2) This Is the Life  
 (7) World Series  
 (9) Adventure Series (C)  
 (9) Cathedral of Tomorrow  
 10:30 (2) Faith for Today  
 (7) Porky Pig  
 11:00 (2) Deputy Dawg  
 (4) House Detective  
 (7) Ballwinkle  
 (9) Herald of Truth  
 11:30 (2) Bowery Boys  
 (7) Discovery '64  
 (9) Shirley Temple Theatre,  
 "Our Little Girl"

(9) Flashback  
 (4) Candid Camera  
 (4) The Rogues  
 10:30 (2) What's My Line  
 10:55 (7) Democratic National  
 Committee  
 11:00 (2) News  
 (4) News  
 (7) News (C)  
 (9) News  
 11:10 (9) Weather, Sports  
 11:15 (2) Sports  
 (4) Weather  
 11:20 (2) Weather  
 (4) Sports  
 (9) Eye Witness  
 11:25 (2) Movie, "East Side/  
 West Side"  
 (7) Movie, "Bachelor Party"  
 11:30 (4) Thriller Movie  
 (9) Movie, "In Old  
 California"  
 12:30 (4) Groucho Marx  
 1:00 (4) News  
 1:10 (2) With This Ring  
 1:30 (2) News  
 (7) News, Weather,  
 "Counting This"  
 1:35 (2) Meditations

MONDAY  
 OCT. 12  
 Morning  
 6:05 (2) Meditations  
 6:10 (2) Farm Front  
 6:15 (2) News  
 6:20 (2) Sunrise Semester  
 6:30 (4) Classroom, Chinese  
 Language  
 (7) Funews  
 6:50 (2) News  
 6:55 (2) Editorial  
 7:00 (2) Happyland  
 (4) Today  
 (7) Ginger  
 8:00 (2) Capt. Kangaroo  
 (7) Big Theater  
 8:30 (7) Movie, "A Wonderful  
 Life"  
 8:55 (9) Morgan's Merry-Go-  
 Round  
 9:00 (2) Movie, "Above and  
 Beyond"  
 (4) Living  
 (9) Romper Room  
 9:55 (4) News, John Hultman  
 10:00 (4) Make Room for Daddy  
 (7) Girl Talk  
 (9) Robin Hood  
 10:30 (2) Lucy  
 (4) Word for Word (C)  
 (7) Price Is Right  
 (9) Coffee Time  
 10:55 (4) News  
 11:00 (2) Andy of Mayberry  
 (4) Concentration  
 (7) Get the Message  
 11:30 (2) The McCoys  
 (4) Jeopardy (C)  
 (7) Missing Links

Trailmaster  
 (7) Razzle Dazzle  
 4:25 (4) News  
 4:30 (2) Early Show, "Young and  
 Dangerous"  
 (4) Mickey Mouse Club  
 (9) Popeye and Pals  
 5:00 (4) George Perrot,  
 Wyoming  
 (7) Movie, "War of the  
 Colossal Boats"  
 (9) Popeye and Pals  
 5:30 (9) Rocky  
 5:45 (9) Bugs Bunny  
 6:05 (2) Morgan and weather  
 (4) Carol Duvall  
 Evening  
 6:00 (2) News  
 (9) Magilla Gorilla  
 6:10 (4) Feature Story  
 6:15 (2) Editorial, Sports,  
 Weather  
 (4) Weather  
 6:20 (4) Sports

6:30 (2) Cronkite  
 (4) Huntley-Brinkley  
 (7) News (C)  
 (9) Sat. Masteron  
 7:00 (2) America, U.S. Travelog  
 (4) George Perrot,  
 Brittany  
 (7) Adventures with Dennis  
 Glen Cooper,  
 Anacondas  
 (9) Movie, "Always Leave  
 Them Laughing"  
 7:30 (2) To Tell the Truth  
 (4) 90 Bristol Court  
 (7) Voyage to the Bottom of  
 the Sea  
 8:00 (2) I've Got a Secret  
 8:30 (2) Andy Griffith  
 (7) No Time for Sergeants  
 9:00 (2) Lucy Show  
 (4) Andy Williams (C)  
 (7) Wendy and Me  
 (9) Show of the Week  
 9:30 (2) Many Happy Returns  
 (7) Bing Crosby Show  
 10:00 (2) Slattery's People

**PICTURE FRAMING**  
 EXPERTLY DONE IN OUR OWN SHOP  
**ART SUPPLIES**  
 FOR THE AMATEUR AND PROFESSIONAL  
**ART CLASSES**  
 FOR ADULTS AND SCHOOL AGERS

**ARTISTS' SUPPLY CENTER**

OPENINGS STILL EXISTS  
 IN SEVERAL ART CLASSES.

1220 N. Woodward (E. Side)  
 2 blocks South of 12 Mile Rd.  
 LI 8-7680  
 Open Daily 9-6  
 Thurs. & Fri. 'til 9 p.m.



**YOU OUGHTA  
 SEE OUR  
 SEMIPALMATED  
 PLOVERS!**

Yes, and the 19 species of Warblers that frequent this sub-tropical Carolina sea island. Not to mention the good, old Common Loon, the Bullethead or the White-rumped Sandpiper! Some 241 kinds of birds have picked Sea Pines for a home at least part of the year. But only ONE kind of people. The kind that enjoy quiet relaxation at a resort that has protected its natural assets; where there's no neon of noise; no city smells, smog or crowding. They love the championship golf course, the tennis, the fishing, the historic sites and the nature trails. Quite a few are still here, living in their own new homes in our pine forested paradise. The migratory ones stay at our oceanfront William Hilton Inn.

For information about homesites, the Inn and completed homes available for seasonal rental, write

## SEA PINES PLANTATION

Box 11  
 Hilton Head Island,  
 South Carolina

# Your Plymouth Dealer has "Something for Everyone"

(4 new kinds of Plymouths...60 new models in all!)



Sport Fury  
 2-door Hardtop

## '65 Fury

Fury is the leader of the 1965 Plymouths. You never saw a Plymouth like it before. It is the biggest, plushiest Plymouth ever. But still solidly in the low-priced field. In the Plymouth tradition, Fury is a great performer — a car named for its hustle.



Belvedere Satellite  
 2-door Hardtop

## '65 Belvedere

Belvedere is another complete line of 1965 Plymouths. What distinguishes the Belvedere is its family size, its sensational performance, and its low price. It's the new way to swing without going out on a limb.



Valiant Signet  
 2-door Hardtop

## '65 Valiant

Valiant is another complete line of 1965 Plymouths. It's the compact Plymouth that hasn't forgotten gas economy, ease of handling and parking. And for 1965, the best all-around compact comes all wrapped up in a bright new package.



Barracuda  
 2-door Sports Hardtop

## '65 Barracuda

Here's the '65 version of the fast-moving new fastback that seats 5 and is priced under \$2500.\* Did we say fastback? It's also got a "fast front": an optional 273-cu.-in. Commando V-8 that moves the Barracuda with the best of them. Front bucket seats, fold-down rear seat for 7 feet of cargo space, and tinted glass in rear window are standard.

### Something for Everyone:

| Series:               | Overall length:<br>(standard models) | Price<br>start at* |
|-----------------------|--------------------------------------|--------------------|
| Fury (22 models)      | 202.4"                               | \$2375             |
| Belvedere (18 models) | 203.4"                               | \$2226             |
| Valiant (18 models)   | 188.2"                               | \$2004             |
| Barracuda (2 models)  | 188.2"                               | \$2487             |

\*Prices based on Manufacturer's Suggested Retail Prices for lowest-priced Fury I, Belvedere I, Valiant 100 and Barracuda 6-cylinder models, exclusive of destination charges, state and local taxes, if any, wheel covers, wheel covers, back-up lights, racing stripes on Barracuda, and other optional equipment.

ON ALL PLYMOUTH'S: 5-YEAR/50,000-MILE ENGINE AND DRIVE TRAIN WARRANTY. Chrysler Corporation warrants for 5 years or 50,000 miles, whichever comes first, against defects in materials and workmanship and will replace or repair at a Chrysler Motors Corporation Authorized Dealer's place of business, the engine block, head and internal parts, intake manifold, water pump, transmission case and internal parts (excluding manual clutch), torque converter, drive shaft, axles, universal joints, rear axle and differential, and rear wheel bearings of its 1965 automobiles. Provide the driver has the engine oil changed every 3 months or 4,000 miles, whichever comes first, the oil filter replaced every second oil change and the carburetor air filter cleaned every 6 months and replaced every 2 years, and 6 months furnishes to such a dealer evidence of performance of the required service, and requests the dealer to certify (1) receipt of such evidence and (2) the car's then current mileage.

See Plymouth in action on The World Series, NCAA Football, and The Bob Hope Show, NBC-TV.

THE ROARING '65's  
 FURY  
 BELVEDERE  
 VALIANT  
 BARRACUDA



PLYMOUTH DIVISION CHRYSLER MOTORS CORPORATION

# BIRMINGHAM CHRYSLER-PLYMOUTH, INC.

912 S. Woodward, Birmingham, Michigan

## Protect Those Important Papers --- IN YOUR HOME AND OFFICE! With This Famous All-Steel

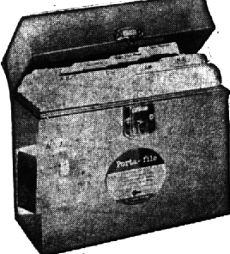
### Porta-File

Now **\$1.98**  
 Only

Holds Close to  
 1,000 Documents!...

Don't take chances of loss with those papers that are important to you. Get one or more of these all steel Porta-Files and insure their safety!

And this Porta-File comes complete with index folders and has key lock! Easy carry balanced handle and holds close to 1,000 documents in hammer tone green or gray, size 10 1/2 by 10 inches. And the recessed handle makes it easy to stack. And only \$1.98 — very little to pay for so much protection for your important documents!



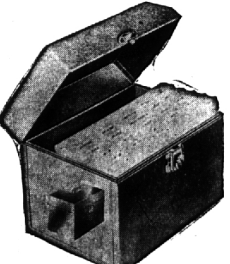
## And If You Have a Great Many Papers --- GIANT SIZE PORTA-FILE

Now **\$2.98**  
 Only

Holds Close to  
 2,000 Documents

This giant size Porta-File is also of solid steel construction and comes complete with convenient index folders and a lock and key. Finished in hammer tone green or gray, size 12 1/2 by 12 inches with easy carry balanced handle.

So, if you have a great many documents that need safeguarding this is ideal because it holds around 2,000 documents in orderly fashion. And \$2.98 is very little to pay for so much safety! Be sure to see these famous Porta-Files. You never saw so much safety for so little investment.



# GREGORY, MAYER & THOM

Everybody's Stationers—Since 1899

167 N. Woodward, BIRMINGHAM

MI 6-4180