



YOUR GARDEN CENTER

instead of having
BAUBLES, BANGLES and BEADS
(Which Will Come Later)
is now bulging with

- BASKETS
- BIRD FEEDERS
- BITTERSWEET
- and
- BULBS

BASKETS—for bins, beans, bread; flowers, fish, fun; magazines, meat, miscellaneous; roots, roses, rutabaga (with no bottoms); plants, peas, pears; tools, towels, trowels; wood, weeds, wine; demure, decorous, delightful.

ALSO—bushels & half bushels pecks & half pecks

BIRD FEEDERS—of near about every size, shape and description designed to detour the most discriminating denizen of the skies in YOUR yard, and probably plenty of populous passerinae too.

ALSO—the feed to put in them.

BITTERSWEET—in lovely long lengths to grace the groaning board, and lure the lovely autumn light into the lingering shadows of the living room, the crummiest corner of the kitchen, or the funniest facet of the family room.

ALSO—smaller bunches.

BULBS—in addition to all those described in a very expensive ad on page 3, section BB of this AWARD-WINNING WEEKLY, we have the completely new and novel MAGIC GROWER. This is a five inch clear and green plastic container for growing bulbs indoors in only water. They come complete with Imported Holland Bulbs, including tulips, daffs, crocuses, and hyacinths... all prepared for indoor culture. Now you can have spring indoors all winter long.

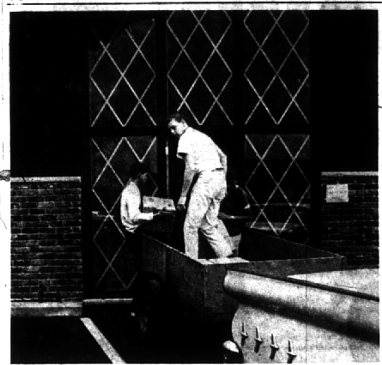
ALSO—complete instructions.

"B & B"

McCLELLAN-BALL CO.

Everything for the Farm and Garden

850 S. WOODWARD, BIRMINGHAM, MICH.
FREE AREA DELIVERY Midwest 4-1133



'Operation Booklift'

It was moving time Saturday for the Bloomfield Township Public Library as some 15,000 books were removed from storage at the township garage and taken to the new library building at 4036 Telegraph Road. Helping with the chore were 18 persons—youngsters and grownups—in what was dubbed as "Operation Booklift." The new library is scheduled to open by mid-October.

Peach Basket Becomes Crate For Packing

Bushel baskets, once a mainstay of Michigan's annual peach crop, have been nearly completely replaced in just three years by the three-quarter bushel crate.

Glen Antle, Benton Harbor, district marketing extension agent for southwest Michigan, introduced a group of fruit growers in purchasing 20,000 wire-bound three-quarter bushel peach crates for a trial in 1961. Acceptance of the new peach package was nearly immediately universal.

THE THREE-QUARTER bushel crate was the most widely used container for Michigan peaches last

year, added the marketing specialist. Some 60 per cent of the two million bushel Michigan peach crop moved to market in this package during 1963.

However, Antle points out this change for peaches is rather typical of new produce packaging innovations. And it isn't always to the advantage of the grower.

"A PREMIUM is generally paid for neat and improved packages in the beginning," he added. "Then buyers start requiring the new package on all packaged produce and eventually the market price of the crop is back to the same point as before the new package became available."

The result is that the grower usually must stand the additional expense of new packaging innovations but with little increase in income.

Scouts Plan Activities for Annual Events

The Scouting program is packed with action this month as Cub Scouts "Come to the Fair" and Boy Scouts plan a "Show-'em How Night."

The 1928 Cub Scout packs, Boy Scout troops and Explorer posts in the Detroit Area Council, Boy Scouts of America, are also inviting non-Scouts to visit their meetings, Lee R. J. Scott, Scout council commissioner, announced.

During September small groups of Cub Scouts meet weekly in their dens to prepare their exhibits, games and side-shows for their pack's fair. At the monthly pack meeting all of the dens participate in the fair midway.

THE CUB SCOUTS also take part in contests like tug-of-war, stilt race, top-spinning exhibition, corn-shelling contest and catch the calf's tail. Recognition, awards and ceremonies top off the pack's fair.

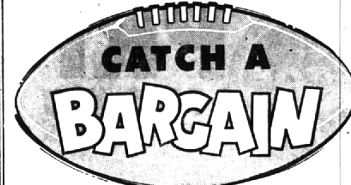
Boy Scout troops meet weekly during September to review Tenderfoot requirements, have Scout advancement instruction and prepare program activities for the "Show-'em How Night."

Prospective Scouts are invited to this activity which features demonstrations of various troop activities planned for October, 1964, through August, 1965.

High-school age boys who are members of Explorer posts are holding special activities with an emphasis on inviting non-Explorers to take part in their meetings.

As part of the Frontier Roundup of the Detroit Area Council, members of the council commissioner staff are holding the annual roll call and uniform inspection.

EXPLORERS ARE also hearing a report from the Second National Explorer Delegate Conference, held at the University of Kansas last month, which developed a national program of action, "Youth Measures Up."



AT HAROLD TURNER'S!

With These "QUALITY CAR CARE" SAVING SPECIALS!

ENGINE ANALYSIS & TUNE-UP

(Performed with Engine Scope and Latest Scientific Equipment)

Replace spark plugs and distributor points. Service automatic choke and air cleaner. Adjust carburetor, fan and steering belts. Check fuel bowl and strainers. Service manifold heat control valve. Inspect battery and electrical connections. Adjust engine timing.

	Regular Price	Now
SAVE 8 Cyl	\$18.99	\$15.99
\$3.00 6 Cyl	16.27	13.27

SPECIAL WHEEL ALIGNMENT

- Check bearing adjustment
- Adjust camber, caster, toe in
- Inspect upper and lower control arms, bushings, ball joints
- Check and adjust steering linkage
- Align steering wheel



464 S. WOODWARD, BIRMINGHAM

GENUINE FORD BRAKE RELINE

- Check all wheel cylinders and master cylinder
- Reline brakes with Genuine Ford lining

Regular price \$24.95 SAFETY SPEC. **\$18.95**

Safety Special

ROTUNDA SHOCK ABSORBERS

Low as **\$6.95** each

Installed

HAROLD TURNER, Inc.

Your Hometown Ford Dealer
For your convenience, open 7 a.m. to 6 p.m. Sat. 'til noon.

MI 4-7500

BLOOMFIELD MIRACLE MILE SHOPPING CENTER'S

Birthday Fair

"HARVEST FESTIVAL"

This

FRIDAY and SATURDAY
OCTOBER
2nd & 3rd

All Booths Will Be Operated by Charitable Organizations Located in The Pontiac, Bloomfield and Birmingham Areas.

Fun!
Games!
Excitement!
For Everyone!

SPECIAL EVENTS

TEEN TIME USA
DIMES FOR D.J.'s
Bands, Prizes, Loads of Fun
Friday 5 p.m. to 9 p.m.
Saturday 10 a.m. to 9 p.m.

LAND OF LAKES
MAJORETTE & DRUM CORP
Baton Twirling
Friday and Saturday Evening

CHAMPIONSHIP 4-H BEEF



GOVERNOR
ROMNEY
WILL VISIT OUR FAIR
SATURDAY AFTERNOON
2:00 TO 3:00 p.m.

BOY SCOUT TROOP 32
INDIAN PATROL
Authentic Indian Dances
Saturday

OX ROAST
11 a.m. to 9 p.m.

FRIDAY and SATURDAY, OCTOBER 2nd & 3rd

BLOOMFIELD MIRACLE MILE SHOPPING CENTER
Telegraph Road and Square Lake Road Pontiac



Birmingham-Bloomfield Area Non-Profit Organizations Which Will Have Booths At The Fair:

Oakland County Republican Committee

Governor Romney

Metropolitan Club of Birmingham & Bloomfield Hills (candy apples)

Valley Woods Branch of Women's National Farm & Garden Association (plants, flowers & Jargo)

The Christ Child Society (Toys, hand-made articles, etc.)

Oak Park Christian Chapel (Women's Missionary Auxiliary Bake Sale & Handiwork)

Lambda Tau Delta Sorority (White Elephant Sale)

Beta Theta Phi Sorority—Beta Chapter (Cotton Candy & Home-made Fudge)

St. Paul's Methodist Church (food)

JUSTIN! BRAND NEW 1965 ZENITH COLOR TV

Genuine HANDCRAFTED for
WORLD'S FINEST PERFORMANCE



THE CASCADE
American Provincial styling in genuine mahogany veneers and select hardwood solids.



THE SALERNO
Italian Provincial fo-boy styling. In genuine cherry fruitwood veneers and select hardwood solids.



THE MARSALA
Fine furniture outside in cherry fruitwood veneers and select hardwood solids.

AMERICA'S No. 1 QUALITY

from \$399⁹⁵



MILKS APPLIANCES

MAIN STORE
1493 S. WOODWARD, Birmingham
4 Blocks North of 14 Mile Rd.
MI 6-1300
Open 9 A.M. to 9 P.M. Daily

WAREHOUSE STORE
2416 WEST 14 MILE RD., Royal Oak
4 Blocks West of Crooks Rd.
LI 9-2692
Open 9 A.M. to 7 P.M. Daily