

The Birmingham Eccentric

BIRMINGHAM, MICHIGAN

OCTOBER 1, 1964

SECTION

F

IN THIS SECTION:

General News

Children's Torch Services Announced In This Area

Institutional care was provided for seven Birmingham and three Bloomfield Hills children during the past year by Torch Drive services.

The orphanage of the past is no more, according to social workers. More and more emphasis is placed on solving the problems of growing children in their own homes or, if that is not possible, in foster homes. Adoptions take care of youngsters who have lost their natural parents.

An increasing amount of therapy is done with parents and families. Skilled counselors work toward preserving and rehabilitating the family which means clearing up problems which otherwise might mean placing a child in an institution.

DESPITE THESE efforts, more than 17,000 children are in Teaching-supported institutions. Certain children require institutionalization as therapy. Others face environments with which it is impossible for social workers to cope. There are 15 institutions for children on the United Communities' Services' list of Torch Drive agencies. Each meets a special need. Duplication of services has been eliminated through meetings aimed at best meeting the needs of the community.

Baptist Children's Home in Royal Oak, provides physical and spiritual care for 32 boys and girls from 6 to 11 years of age and of normal intelligence. Group care and boarding home programs are provided children who must be away from their parents while caseworkers work toward reuniting their families wherever possible.

BOYS' REPUBLIC in Farmington is a resident treatment center for 75 delinquent and emotionally disturbed boys 12½ to 15½ years of age. Its program includes individual counseling and psychotherapy, special education, well-rounded recreational activities for boys as well as a group therapy program for parents and a follow-up program for boys released after an average stay of a year and a half. Delta Home for Girls provides a residence for as many as 14 girls from 13 to 17 years of age who need guidance, counseling, and training to overcome behavior and personality difficulties.

DON BOSCO Hall is operated by the Xaverian Brothers for the care, education, training and rehabilitation of 50 young men from 14 to 17 with a problem, regardless of race or creed. It serves dependent, incorrigible, neglected, and delinquent boys coming to the attention of the various juvenile courts in the metropolitan area.

YWCA Gets Fall Season Under Way

Fall activities at the Pontiac YWCA will be in full swing with the opening of classes next week. The pools at the YWCA and Oakland University, Rochester, will both be utilized for the YWCA's morning classes and dips without instruction.

Mrs. Leonard Buzz will supervise the Oakland program and Mrs. John Streit, chairman of classes, will remain in charge of the YWCA's Wednesday morning program of gym and swim at the YWCA.

A LETTER to the YW's membership has gone out announcing an open house to be held in the YW's hoped-for new home, the Beaudette House, at 2:30 p.m., Oct. 14. Mrs. Donald Purritt, membership chairman, Alice Serrell, campaign chairman, and the officers of the association will conduct groups through the four floors of usable space in the mansion.

Tom Aston, director of Theater at Oakland University, and a group of students will present a program of folk songs. Refreshments will be served in the Y's present building, which it has occupied for 20 years.

Changes Meeting

Franklin Knolls Women's Club is meeting Oct. 8 at St. Coleman social hall on Middlebelt between 14 Mile and Northwestern. Due to school dismissal the group will not meet today. At the regular meetings to be held the first Thursday of the month members may call Mrs. Marino Zaplow for reservations. The First President's tea was held Sept. 24 with Mrs. William Benson, hostess.

Mary Hulbert House of the Girls Protective League, 538 E. Grand Blvd., is a "half-way house" for young adult females from 17 through 25 who have been discharged patients from Lafayette Clinic, and who are employed by day but need a supervised living arrangement during their transition to more independent living. Sherah House, operated by the Jewish Family and Children's Service, is a group home for emotionally disturbed adolescent girls.

THE LEAGUE of Catholic Women's Barst House provides living accommodations for 24 girls with personality problems that cannot be solved in their homes. It offers psychotherapy on an individual basis along with medical care. Girls attend local schools in the community.

Lutheran School for the Deaf is a specialized residential elementary school for deaf and hard-of-hearing children. It accommodates 110, including aphasia-deaf children.

The pre-adoption cottage of Methodist Children's Home Society cares for new-born infants until adoptive parents can be found.

ST. FRANCIS Home for Boys provides total care for 254 dependent and neglected boys who cannot live in their own homes and will profit by group experience.

The Salvation Army's Edwin Denby Children's Home cares for up to 50 girls from 5 to 15 or boys from 5 to 8 from broken homes and wards of the court.

Vista Maria School is a residential school for 180 teen-age girls who present behavior problems but with a presentment for treatment.

Williams Home provides residential foster home care for girls from 12 to 17 years of age who need group living experiences and casework services. They attend public schools, are helped by tutoring and trained in home-making.



Candle Tea Will Raise Funds

Mrs. A. H. Winfield (from left), Mrs. J. Donald Lower and Mrs. Jack Putnam will be among Alpha Phi alumnae who will attend a Candle Tea Thursday, Oct. 8, in the home of Mrs. Carl Fischer, 3645 Lahser Road, Bloomfield Hills. Candle arrangements are sold at

the tea, proceeds going into the sorority's national project, Cardiac Aid, and locally to Children's Hospital in Detroit and to FAR (Friends and Relatives of Retarded Children).

Degrees Given Ending Summer Session at U-M

The University of Michigan awarded 1,062 degrees to students at the end of its summer session, from Birmingham are:

Mildred M. Boaz, MA; Karen H.K. Brown, BA, education; Gerald K. Chalmers, BA; Darline DeJongh, M. social work; John D. Hare, BBA; Marlene A. Jacobs, BA, education; Susan C. Johnson, BS, nursing and Margaret D. Martin, MA.

OTHERS ARE: Bernice J. Mayhew, MA; Sue A. McNeal, BA, education; Garret C. McLaw, BA; Winifred Quarten, M. social work; Gerald J. Strach, BA; Lawrence A. West, BA and Thomas H. Yasin, BS, engineering.

Listed from Bloomfield Hills are Susan J. Blanchet, BA; William D. Childs, B. architecture; Carolyn E. Longue, MA; William A. Raisch, MA and Mary Russell, BA, education. Graduate from Franklin is Bradford F. Barr, MS. Southfield graduates are Howard H. Postema, BA; Judith G. Schmidt, MA, library science and Sandra B. Slowing, BA.

SPECIAL!
MALTED MILK CRUNCH
Reg. Price \$1.49 14 Oz. **99¢**
Delicious Chocolate Malted Milk Bark

Albert Sheetz
Largest Selection of Candy in the U.S.A.
820 S. Woodward Avenue... Birmingham
• Northland Center • General Motors Building
• 17001 Kercheval... • Grosse Pointe

THE UNFETTERED LOOK OF CLASSICAL TRADITIONS



IMPORTED SEAFORTH
SHETLAND WOOL
SPORT COAT
WOVEN IN SCOTLAND

A luxurious tweedy look in the newest plaid, herringbone tweeds, houndstooth checks and diagonal weaves. Tailoring of classic distinction.

Unpleated Worsted
FLANNEL
SLACKS
from \$16⁹⁵

from \$55

Young's
of Birmingham

for the better dressed man

203 Pierce Street

OPEN FRIDAY EVENINGS

Grand Opening.

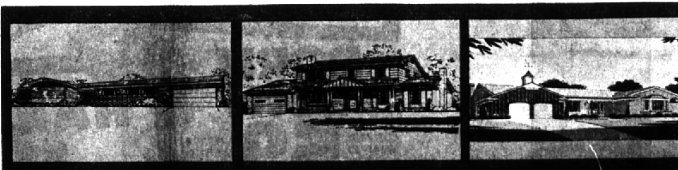
NATIONAL HOME MONTH MODELS! NEW DESIGN IDEAS!

PINE LAKE ESTATES... IN THE BLOOMFIELD SCHOOL DISTRICT...

an established subdivision providing private lake privileges exclusively for residents. See 7 idea-laden model homes, beautifully furnished and landscaped, including the 1964-65 World's Fair House! Select from 3, 4 and 5 bedroom colonial, multi-level and ranch designs. Homes priced from \$27,750 to \$45,900 including large lot and all listed features

NOTTINGHAM FOREST... IN THE BIRMINGHAM SCHOOL DISTRICT...

Introducing the new "Fairwood" three bedroom ranch home in this quiet, prestige location of gently rolling terrain and tall trees. See colonial and cape cod models too, all reflecting the craftsmanship which has merited the Better Homes & Gardens citation. Homes priced from \$39,900 to \$85,000 including lot and all listed features



Brimming with new ideas! The WORLD'S FAIR HOUSE modified replica in Pine Lake Estates, features Acrylite skylights, luminous Acrylite ceilings, Formica "Walnut" paneling in Family Room and Kitchen... glamorous new bathroom ideas... a two-way fireplace in living room and Family Room... and a host of other features, researched by the Formica Corporation and built into this exciting home by the Keating Building Company.

The WELLINGTON is distinguished for its colonial authenticity of design and the livability of its wonderful floor plan. Large covered porch welcomes you to a spacious foyer and center stairway. There's a 21 foot living room, Family Room with fireplace, den or library, 1st floor laundry, 4 bedrooms with Master Suite, 2½ ceramic tile baths, 2 car attached garage, full basement, pre-finished kitchen cabinets, built-in appliances.

The FAIRWOOD brick ranch home with unusual exterior reminiscent of early English architecture blends with the traditional atmosphere of Nottingham Forest. Three bedrooms are sound-conditioned as in the paneled Family Room with beamed ceiling, country fireplace, refreshment bar with sink, fully equipped kitchen has automatic dishwasher, range and oven, decorative hood, island sink. Over 2,400 square feet of living are provided, including separate dining room, 1st floor laundry... plus full basement, 2 car attached garage.



Pine Lake Estates Models Open daily, Sunday 11 to 8; Saturday 11 to 6. Model Phone: MA. 6-3578.

General Offices: MI. 6-9200 JO. 6-7959

Better Living Begins In Keating Communities

... of architectural
... in prime real
... Birmingham, Mich. 48211

Nottingham Forest Models Open daily, Sunday 11 to 8; Saturday 11 to 6; Models Closed Thursday. Model Phone: MI. 6-2544.