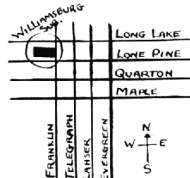


ANNOUNCING Williamsburg



**BLOOMFIELD'S NEWEST SUBDIVISION
WITH WATER, SEWER, GAS and PAVED ROADS.**

**COLONIALS—SPLIT LEVELS—
RANCHES**



Priced From
\$40,900

On Estate-
Size Lots
with
Rolling
Terrain



COLEMAN & MOSS Builders

OFFICE: 647-1998

Developers of Distinctive Subdivisions

MODEL: 646-2586
or 626-0149

DOWN TO EARTH

Don't Fertilize Your Sick Evergreen Now

By ALICE WESSELS BURLINGAME
Special Writer

We do know our evergreens suffer the most ill health during the winter when there isn't enough snow for moisture or there are sharp contrasts of warm and cold.

There is a gadget that can be used for inducing water down into the root area. This same tool can be used with liquid fertilizer, but please don't use it for this purpose until next spring. Suppose you gave an ill evergreen a big shot of fertilizer at this time.

It would think it was spring, start sending out new leaders and experience real hardship during the winter.

Many of you look at your devoted geraniums and feel such loyalty they have given you deserves sharing your home during the winter months.

As soon as they are potted and brought in they will begin to lose their leaves. Cheri up, that is normal. They are just changing their leaves for "the treat".

You can pot them up individually, place them in the basement where they do have some light near a window. Many people construct a hanging shelf on a chain from the ceiling, placed to take advantage of a basement window.

YOU MUST CUT them off not more than four inches high or you will be ashamed of their ungainly nature next spring. The terminal tips which you have cut off may be placed in sand when cut to about

five inches and provide a crop of rooted cuttings for future potting.

Keep these semistarved gems on the dry side. I mean, water once a week.

My talented neighbor who loves to try new garden tricks is tired of lacy leaves due to inch worms and other early spring pests, so here is her program: About six feet off the ground, she first winds strong water-strength paper toweling which will nestle in the grooves of the bark.

The next step is to roll around the circumference of the tree the heavy-duty brown paper tree wrap, tack on and make a band of Tanglefoot about two inches wide.

THIS PREVENTIVE measure is supposed to keep the insects that damage your tree below the wrapped line. Many fine results were reported on this technique and many dollars saved from spraying. Guess I will try it myself.

Every year I marvel at the joy one experiences in having a greenhouse. The previously empty house is now filled with plants bursting with bloom, which were brought in from the garden.

The pleasure of spotlighting the color at night to pass on a moment of enjoyment to others at the end of a long day is one of an owner's compensations.

THE HARVEST season is over for patients at Pontiac State Hospital who are on the new hospital plan where they come for daytime treatment only, a new project for Michigan.

Horicultural therapy was an important date for them. So many relaxed their tensions in the fertile earth, beauty was created.

More than half of them hadn't had the joy of planting corn, then harvesting it for supper that night in their own homes.

Watermelon, melons, tomatoes and squash were planted and harvested, too.

Many found that the fellow hoeing next to him was a good Joe. Emotional barriers were relaxed. How indebted we are, all of us, to the good earth.

Village Players To Open Season With Comedy Hit

An explosion of laughter will launch the Village Players into orbit this season when 22 men and one versatile woman present "No Time for Sergeants" to open the year, Oct. 16-17 and 22-23-24.

William R. McCall, 987 Oakland, is directing the comedy, assisted by Mrs. John K. Kleene and, as producer, Eliot W. Higgins.

Although publishers' releases are hampering completion of the year's schedule, the Players' bulletin lists several other exciting dramatic events as final and as follows:

November, "Picnic"; December, an original by Players members, as yet unnamed; January, three one-act plays from Noel Coward's "Tonight at 8:30" series; February, "Major Barbara"; March, still not confirmed; and April, "HMS Pinafore" by Gilbert and Sullivan.

"SERGEANTS," already in rehearsal, is really getting its money's worth out of Mrs. Kleene, who plays three parts as well as assisting the director. She will be seen as a mountain girl, a nurse and a cigarette girl—the only girl in the all-male cast.

Lead roles will be played by Dean Swanson as Will Stockdale and Bill Seebach as Ben.

Also featured will be Edward S. Reid, Jr., as Pa Stockdale, Charles McKaig as the draft official, George Pollard as Irvon, Bob Gilroy as Sgt. King; J. S. Hodges, Jr., as the psychiatrist and Howard Beer and John Mitchell as two generals.

Still others will be Norman Gustafson, a bus driver; Tom Tabor, and John Street, two lieutenants; A. T. Iverson, Jr., and Bobin Filolston, two corporals; Bob Vanderveer, an Air Force captain; and seven indulgences, played by John E. Hall, John Gilray, Norman James, Jr., Bob Oleski, Michael Madeleine and Ted Iverson.

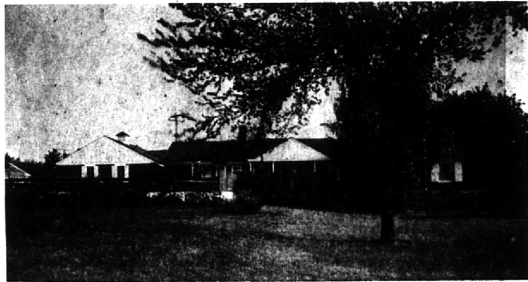
BAA President Invites Public
An invitation to the public to attend an opening reception is being extended by Mrs. M. C. Fraubert, president of the Bloomfield Art Association, she said.

- Quarton Schools
- 3 bedrooms, 1½ baths
- Separate Dining Room
- 2 fireplaces
- Screened porch
- Recreation Room
- \$29,500.00

THEY ARE OLD . . . THEY ARE NEW . . . THEY ARE BEAUTIFUL and they have Lake Frontage!



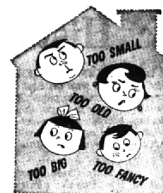
On Wing Lake and a pool too
3 bedrooms, 2 baths
separate dining room
2 fireplaces
family room
sprinkler system
storage room
Words can not describe the rest
you have to see it.



View of Lower Long Lake from all rooms.
3 bedrooms, 3 baths
Panelled library
Formal Dining Room
Family Room
2 fireplaces
Jalousied porch
Pump and water from Lake in concrete boat house.
This is one of the most beautiful sites on Lower Long Lake



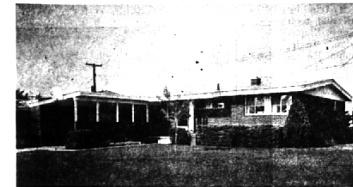
FRED PIERCE INC.
460 NORTH WOODWARD, BIRMINGHAM, MICH.
Midwest 7-1414



Chamberlain Will Find a Home to Please You



PRESTIGE NEIGHBORHOOD — Beautiful foyer with framed lighted montage. 3 twin sized bedrooms. Farm kitchen with built-in oven/range and BBQ. Beautiful paneled family rm. with window door entering onto patio. Elegant fireplace living rm. tiled rec. rm. Full basement. 2 car att. gar. Professionally landscaped yard with formal flower beds. B'ham schools. \$31,900



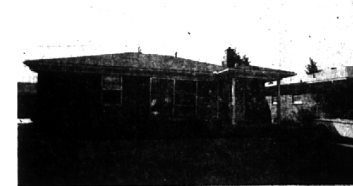
SMART CONTEMPORARY RANCH — Large bright kitchen with new easily cleaned vinyl floor. Garbage disposal. Extra cupboard space. Handsomely tiled and paneled rec. rm. 3 bedrooms. Beautiful carpeting and drapes throughout. Rear patio. Full basement. Birmingham schools. \$20,750



FOR THOSE SEEKING SOMETHING ENTIRELY DIFFERENT — A true "pure" 4 bedroom, 3 bath contemporary ranch built around "u" shaped free formed patio. Luxurious 2-way fireplace in living rm. and dining rm. Cozy modern kitchen with built-in dishwasher and oven/range. 18' covered porch. Convenient playroom. Library. 2 car attached garage. This home is in excellent condition. \$44,900



WHY NOT S-P-R-E-A-D O-U-T in this immaculate, one-year-old colonial. Enjoy the modern kitchen with breakfast nook and convenient built-in Hotpoint appliances. Loads of cupboard space. Warm paneled and tiled family rm. with brick fireplace off the kitchen. Folding closet doors in the four twin-sized bedrooms. Beautiful Merion Blue soded yard. Basement. All this for only \$34,500.



IF COMFORT COUNTS see this charming 3 bedroom ranch in area of fine homes and B'ham schools. Enjoy fewer steps in the modern kitchen with eating space. Smart living and dining rms. Full basement. Rear patio. Beautiful Redwood fenced yard. \$18,900

Chamberlain Co. Realtors

975 S. Hunter Blvd., Birmingham, Mich.
31500 Northwestern Hwy., Farmington, Mich.

MI 6-6000
MA 6-9100