

Binocular Vision Helps Owls To Catch Fast-Moving Prey

In addition to their odd looks and manners, the bodies of owls show an unusual degree of adaptation to their mode of life. Since they are nocturnal birds of prey, their sight is primarily involved in their efficiency as predators and thus in the survival of the species.

All who have observed an owl know that the large eyes face forward in a relatively flat surface. Scientists find they have binocular vision with a depth of range for judging distance. This adjustment gives them a decided advantage since they prey on fast-moving animals.

THE ALMOST HUMAN look of an owl's eye is due to the fact that it is the only bird that can drop the upper lid when it blinks. However, when asleep it can raise the lower lid as do other species. All birds also have a third eyelid, a transparent membrane which keeps the eye moist but at the same time allows full sight. The efficiency of owls as birds of prey is further increased by their acute sense of hearing. Although this equipment is similar to that of other vertebrates, the sound waves are carried more directly to the inner ear so that scientists believe they may hear sounds inaudible to man. However, when asleep they have a narrower sound range.

FEATHERS ARE important to every bird in providing flying lift and later regurgitating the indigestible fur and bones, gives them a distinct advantage in utilizing large amounts of food when it is available.

The rejected pellets are also a proof that for most species rodents are the chief item on the bill-of-fare. Our Great Horned Owl, who is primarily a rabbit eater, and our Screech Owl, who adds insects to his list of foods, are exceptions.

It is probable that the owl first was made an image of wisdom by the ancient Greeks. At any rate they depicted this bird as a companion to the Goddess of Athena on one of their coins dated 500 B.C.

zine pictured such a battle with a large coon snake as the victim. After a desperate struggle the owl, gripping the serpent with both talons, finished off his victim with a fatal bite just back of its head.

The ability of owls to eat rapidly by consuming the entire animal and later regurgitating the indigestible fur and bones, gives them a distinct advantage in utilizing large amounts of food when it is available.

The rejected pellets are also a proof that for most species rodents are the chief item on the bill-of-fare. Our Great Horned Owl, who is primarily a rabbit eater, and our Screech Owl, who adds insects to his list of foods, are exceptions.

It is probable that the owl first was made an image of wisdom by the ancient Greeks. At any rate they depicted this bird as a companion to the Goddess of Athena on one of their coins dated 500 B.C.

Movie Guide

Parenteen Committee
Birmingham P.T.A. Council

MOVIE	Green Sheet National Legion of Decency	Code
Good Neighbor Sam	A-MY	A-2
Ride the Wild Surf	A-1	A-1
The Pirates of Blood River	A-MY	A-2
Cleopatra	A-MY-Y	B

* recommended as superior entertainment especially for children

CODE GREEN SHEET

These audience symbols are intended as broad guides to selection, and do not indicate either recommendation or non-recommendation of the films to which they are applied.

A Adults
A-MY Mature Young People
Y Young People (12 years to 16 years)
C Children (unaccompanied by adults)
GA General Audience

NATIONAL LEGION OF DECENCY
A-1 Morally Unobjectionable for General Patronage
A-2 Morally Unobjectionable for Adults and Adolescents
A-3 Morally Unobjectionable for Adults
B Morally Objectionable in Part for All
C Condemned
SC A separate classification is given to certain films which, while not morally offensive in themselves, require some analysis and explanation as a protection to the uninformed against wrong interpretations and false conclusions.

Three Local Women Receive Art Awards At Medical Show

Three area women were winners at the 1964 annual art show for Michigan physicians and their wives Sept. 23-24 in Detroit. The show was held in conjunction with the 99th annual meeting of the Michigan State Medical Society.

First place in the class for oils was a painting by Mrs. Emerick (Kew) Szilagyi, 189 Nantucket, Bloomfield Hills, entitled "Julie."

The class for three-dimensional design jewelry was won by Mrs. Mark Dale, 4595 Pickering Road, Birmingham, for her gold jewelry. Mrs. Herman Linn, 1522 Kirkway, Bloomfield Hills, received a first in the weaving class for her blanket entry.

Area Artists Show Talent at Market

Birmingham area artists Dorothy Hughes, Hiroka Oba and William Pinney will exhibit ceramics and Dorothy Currie of Birmingham will display prints and hand worked silver at the Detroit Artists Market.

The annual opening exhibition of the new season began Friday. The show will be on display from 10 a.m. to 5 p.m. Monday to Saturday to through Oct. 24.

FOR LEASE

5,500 sq. ft. industrial space in new building under construction in Birmingham Airport Industrial Sub-division at Maple and Coolidge. Will finish to your specs with room for expansion. Occupancy September 1, 1964.

Simone & Co.

273-8300



APARTMENTS FOR LUXURIOUS LIVING

East Jefferson at Nine Mile Rd., St. Clair Shores, Michigan

Managed by Homer Warren & Co.

On a private drive under great shade trees lies the Gross Pointe area's newest and most exclusive apartments. Designed for those who appreciate apartment living at its modern best. We invite your inspection of the few units still available. Our Resident Manager will be delighted to show you around, or phone 775-3280.



Mrs. Frehse

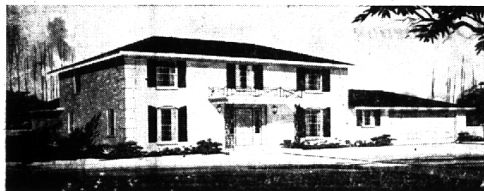
to compensate for this, the bird can move its head more than a half circle in either direction, creating the illusion that it can make a full 360 degree turn.

Many an observer has demonstrated this mistaken notion by walking completely around a perched owl only to find that when it reaches the halfway point, its head instantly pivots back to the other side, resuming its rigid stare.

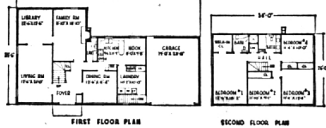
SOME TIME AGO Life Magazine



Need a beautiful new home at once? Choose from six... call the van!



the NORMANDY—Immediate Occupancy—\$37,900



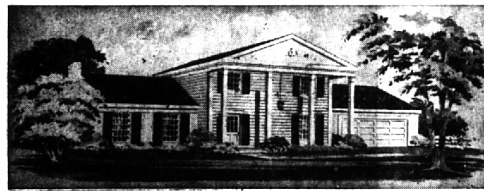
Four bedrooms, 2 1/2 baths, library. Large basement, 1st floor laundry. A large, exciting residence designed in the classic French Provincial style. Beautifully landscaped lot, exquisite carpet and drapes included.



the WADDINGTON—Immediate Occupancy—\$35,900



A center-entrance Colonial of magnificent new proportions. Four bedrooms (including owners' suite), 2 1/2 baths. Private study office for father. This is a large home... well designed... constructed with loving care by dedicated builder... a residence of perfection.



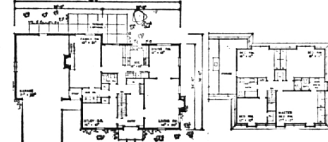
the GEORGIAN—Immediate Occupancy—\$40,900



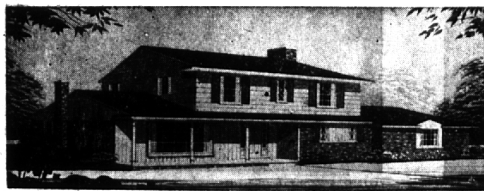
This impressive residence just completed on picturesque Loch Kirkwood with a view of the water from the family room, dining room and kitchen. Four bedrooms, 2 1/2 baths, den, Custom designed, carefully hand-crafted.



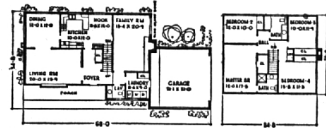
the BRITTANY—Immediate Occupancy—\$45,600



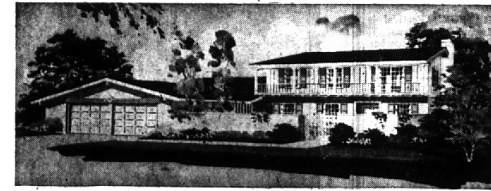
The authentic Mansard roof line of this French Provincial design makes for a truly unique new residence. Four bedrooms, 2 1/2 baths, basement. Huge bonus area over garage may be used for studio or maid's quarters.



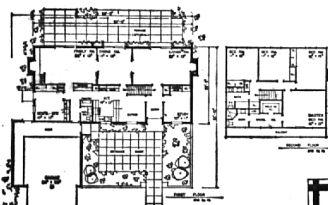
the SHERWOOD—Immediate Occupancy—\$34,900



Distinctive "wing" Colonial design features four bedrooms, 2 1/2 baths. Wind-protected patio area is reached through sliding glass window-wall from spacious family room. "Step-saver" 1st-floor laundry. Spacious basement.



the MONTEREY—Immediate Occupancy—\$44,900



An outstanding residence situated on a large lake lot with a beautiful view from the rear-facing living room. Four bedrooms, fifth bedroom or study on the first floor. PLUS a sewing room or office with an outside entrance. Two fireplaces, 2 1/2 baths. Front courtyard has brick terrace wall and gate.

Calendar of Cultural Events

- Thurs., Oct. 1**
BRIDGE — Birmingham Duplicate Bridge Club at 7:45 p.m. at Birmingham YMCA.
CRANBROOK INSTITUTE OF SCIENCE — Skillman Wing for the Physical Sciences with exhibit "Experiments in Physics." Hours 2-5 p.m. Mon.-Fri. and 1-3 p.m. Sat.-Sun. on Lone Pine Rd., Bloomfield Hills. Admission charge.
LITTLE GALLERY — "Eyes on New England" exhibition of art work by Joseph Barber and Jack Valle at 915 E. Maple, Birmingham. Show continues through Oct. 24. Hours 9 a.m. to 6 p.m. Tues.-Sat.
JAPANESE ART SHOW — Works by artist Kichi Usui on display in the Oakland University Art Gallery through Oct. 12. Hours 12:30-4 p.m. Mon.-Fri. and 2-5 p.m. Sun. in Rochester.
VILLAGE WOMAN'S CLUB — Armchair Travelers presents slides and lecture on around-the-world trip and Poland at 7:15 p.m. at club in Bloomfield Hills. Admission charge.
BIRMINGHAM THEATRE — "Cleopatra," held over through Tues.
BLOOMFIELD THEATRE — "Good Neighbor Sam," starring Jack Lemmon, and "Ride the Wild Surf," with Tab Hunter, Barbara Eden.
Fri., Oct. 2
RENAISSANCE FILM FESTIVAL — Second program of four films by artist Clifford West for Kingswood Cranbrook scholarship benefit at 8 p.m. in auditorium at Kingswood School Cranbrook, Bloomfield Hills. Admission charge.
REVIEW AND PREVIEW — Michigan artists celebrate Birmingham's Centennial in exhibition at the Bloomfield Art Association, 1516 S. Cranbrook. Reception and buffet for members and guests at 7 p.m.
- Sat., Oct. 3**
BALLET '64 — On Oakland University Community Art Council concert series at Pontiac Northern High School.
WRITERS' CONFERENCE — All-day conference at Oakland University sponsored by the Detroit Women Writers' Club. Topics include poetry, books, magazines pieces; stories and articles, journals, drama. Admission charge.
Sun., Oct. 4
CARILLON CONCERT — By Fred Farmer at 4 p.m. at Christ Church Cranbrook, Bloomfield Hills.
BLOOMFIELD ART ASSOCIATION — Opening reception from 2 to 5 p.m. at Birmingham Art Center, 1516 S. Cranbrook. Centennial exhibition, "Review and Preview." Show continues through October. Hours 2-5 p.m. Tues.-Sun.
Mon., Oct. 5
BRIDGE — Community House Duplicate Bridge Club at 7:45 p.m. at 380 S. Bates, Birmingham.
BRIDGE — Birmingham Duplicate Bridge Club at 12:30 p.m. in home of Mrs. Stuart Murphy, 2424 Manchester, Birmingham.
Wed., Oct. 7
BRIDGE — Birmingham Duplicate Bridge Club at 7:45 p.m. at Birmingham YMCA, Master Point Night.
Thurs., Oct. 8
BHAM TOWN HALL — Broadway and Hollywood star Kitty Carlisle is speaker at 11 a.m. in the Birmingham Theatre. Admission by season ticket only.
BRIDGE — Birmingham Duplicate Bridge Club at 7:45 p.m. at Birmingham YMCA, Master Point Night.
Fri., Oct. 9
BHAM TOWN HALL — Broadway and Hollywood star Kitty Carlisle is speaker at 11 a.m. in the Birmingham Theatre. Admission by season ticket only.

Bloomfield Country Manor

New Ultra Luxury Apartments Now Renting in Bloomfield Hills Near Long Lake Road

- Extra spacious 2 bedroom, 2 bath apartments
- 1,500 square feet of gracious living
- Central Air Conditioning
- Formal Dining Room • Dressing Room • Balcony
- Covered Carport • Swimming Pool • Walk-in Closets
- All-Electric kitchen with deluxe GE appliances from \$250, includes heat

Furnished Model (by Tripper Furniture Co.) at 2817 Woodward between Long Lake Road and Ingers Lake Road. Open 12-8 p.m.

CHARFOOS & TRINGER 334-6236 • UN 4-6666

THOMPSON-BROWN Company

HOMES OPEN from 11 a.m. to 8 p.m. Monday through Friday and Sunday. Until 6 p.m. on Saturday. Closed on Thursdays.

KIRKWOOD PHONE: MA 6-7522
Office Phone: KE 1-8700

