

BAA Faculty Show to Open At Reception

The Faculty Exhibition of the Bloomfield Art Association will open with a reception from 2 to 5 p.m. Sunday at the Birmingham Art Center, 1516 S. Cranbrook.

Arlen Linn, weaver and designer, is chairman and in charge of hanging the exhibition. The show will continue daily except Mondays from 2-5 p.m. through Feb. 28.

Members of the faculty participating are Mary Jane Bigler, painter; Kathleen Birch, painter; Betty Conn, sculptor and designer; Peter Gilleran, painter and teacher.

JAMES HANSEN, painter and potter; John Jacobson, painter and sculptor; Svesa Kline, sculptor; Robert Kotersman, portrait painter; George Landino, painter, craftsman and teacher; Christos Papadopoulos, sculptor and ceramist.

Edward Praczukowski, painter and teacher; James Purrier, potter; Stuart Ross, painter and instructor; Dorothy Siddall, painter and teacher; Carolyn Switzer, artist; and Howard Machette, artist.

Painter Clifford West, a lecturer on the BAA series, also is exhibiting.

Woodwinds Perform

The University of Michigan Woodwind Quintet appears on the Cranbrook Music Guild series Tuesday at Cranbrook House, Bloomfield Hills. The program of traditional and modern works included quintets by Hayden, Perichetti, Danzi Allaby and Francaix.

Shaarey Zedek Panel Discusses Unusual Queries

Rabbi Morris Adler and Dr. Morris Weiss will join in a panel discussion on "The Perplexing Questions Children Ask" at 8:45 p.m. Monday at Congregation Shaarey Zedek, 27875 Bell Road, Southfield.

Dr. Weiss is engaged in the private practice of child psychiatry and is a member of the Board of Education of the City of Oak Park. He serves as consultant at the Hawthorne Center and at the Oakland County Guidance Clinic.

DR. SAMUEL KROHN will moderate the panel. Included will be such problems as explaining death to a young child, relating the child to traditions and observances and teaching the child right from wrong.

Parents whose children attend the congregation's nursery school and first and second grades are invited to attend. Reservations should be made by telephoning the Shaarey Zedek School office.

A social hour will follow the panel discussion and provide an opportunity to meet with the children's teachers.

Art for Students Offered at YMCA

An oil painting class, taught by Martha Fairchild, is being offered to junior and senior high school students by the Birmingham YMCA, 400 E. Lincoln.

The 12-week session began Tuesday, from 7-8 p.m. Students must provide their own materials. There is a course fee.



EXCHANGING BROCHURES about the two liberal arts courses Oakland University will bring to Birmingham are Robert Thom, president of The Community House (center) and Dr. Lowell Eklund of OU. Robert A. Bogan, executive director of The Community House, where the new classes will be held, watches the informal ceremony.

SCHEDULES TWO IN LIBERAL ARTS

Community House to Offer Oakland University Courses

Two liberal arts courses for adults will be offered at The Community House this semester in a cooperative venture with Oakland University's Division of Continuing Education.

"Although we have arranged many lecture series for community groups, this is the first term we have taken courses to off-campus sites," according to Lowell Eklund, associate dean for Continuing Education.

"When we considered a location for liberal arts courses, naturally The Community House came to mind."

THE DRAMA AS A Political Institution will be taught by Theodore L. Becker, assistant professor of political science, Oakland, from 8 to 10 p.m. Mondays beginning Feb. 17. Professor Becker is a Birmingham resident at 327 Southfield.

The Civilization of Ancient Greece is scheduled for Tuesdays from 1:30-3 p.m. beginning Feb. 18. The teacher will be Mrs. Jennifer Potter of the Oakland Continuing Education faculty. She holds a master's degree in classics from Cambridge University, England.

Says Robert A. Bogan, executive director of The Community House, "This joint venture with Oakland University culminates our efforts to expand our educational program for adults in the Birmingham-Bloomfield area, and the courses selected serve as a fine supplement to our other adult and youth classes."

THE DRAMA AS A Political Institution is basically a reading and discussion course in which students examine the drama and how it has been used as a conduit for political ideas.

The works of such ancient and modern playwrights as Aeschylus, Machiavelli, Shakespeare, Ibsen, Bernard Shaw, Clifford Odets, Brecht and Sartre will be studied.

"The intellectually creative playwright sometimes has written as a political reformer, sometimes as a political philosopher and often as a political observer and commentator," Professor Becker points out.

Becker came to Oakland 18 months ago from the faculty of Northwestern University. He holds a master's degree from the University of Maryland and LL.B. from Rutgers Law School. He is currently completing work on a Ph.D. at Northwestern.

THE HISTORY, cultural and artistic achievements of the ancient Greeks comprises the subject matter for The Civilization of Ancient Greece.

Mrs. Potter feels this course will heighten appreciation of Greek classical background and will be of special interest to anyone planning to visit modern Greece.

Mrs. Potter has been an administrative assistant at the London School of Economics and a teacher at The British Center, Stockholm, Sweden. She came to the United States in 1958.

Tickets Available For Art Lectures

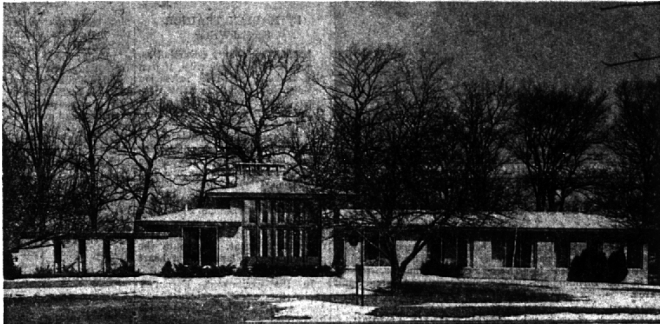
There are a few individual tickets left for the lecture series in which scholars Clifford B. West, Thomas McClure and Guy Palazzola will discuss group and individual attitudes and techniques of sculptors and painters, the Bloomfield Art Association reports. An admission is charged.

West, a resident of 225 Lone Pine Road, Bloomfield Hills, will discuss the Renaissance at 7 p.m. Tuesday at the Birmingham Art Center, 1516 S. Cranbrook. He gave the first talk in the series on the 13th century, this week.

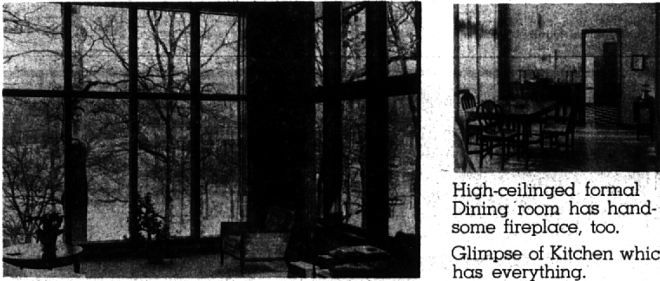
States from England last summer when her husband was appointed to the Oakland faculty.

Registrations for either course are being accepted at The Community House, Bates and Townsend, Birmingham, or at Oakland University, Division of Continuing Education. The fee is for 10 weeks of instruction.

CALIFORNIA CONTEMPORARY



Authentic Design with Mission influence — Bi-Level on wooded Ravine 2-acre site.



High-ceilinged formal Dining room has hand-some fireplace, too. Glimpse of Kitchen which has everything.

Magnificent view through Living room windows — a year-round delight.

LOCATION—gorgeous lot in prime Bloomfield Hills area — so located on the lot that virtually every room has a view—both upper and lower levels.

LIVING SPACE—Living room — Dining room — Library (with bookshelves and fireplace). Family room—6 Bedrooms, 3 Full Baths—4 Fireplaces. All rooms are large, light and airy.

QUALITY THROUGHOUT—Beautiful woodwork and paneling — all windows and sliding doors are Thermopane — all equipment is top-quality.

PRICE—Well, this is not for everyone — it's a large house with wonderful structure and lines, "good bones", and no De Luxe detail spared — AND it's priced accordingly — for the Family who wants the best in the best location.

CALL US FOR AN APPOINTMENT IF THAT DESCRIBES YOU!!

SNYDER & BENNETT
INC.
Realtors

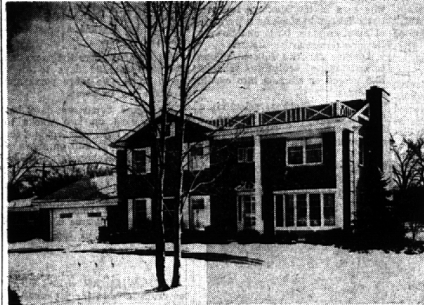
MI 4-7000 MA 6-9600
239 S. Woodward, Birmingham 32740 Franklin, Franklin

THE KEATING COLUMN

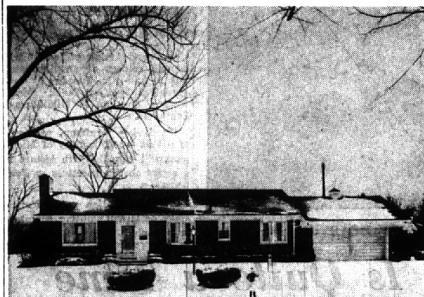
We hope you like our new format; the Column still will have news and views of real estate with special emphasis on Birmingham-Bloomfield.



Here's an exceptional home! Quality built and in a fine Beverly Hills location. It has three bedrooms (all larger than average) a deluxe games room with bar, large living and dining areas. The lot is professionally landscaped and sprinklered. There are automatic garage door openers and many other special features. A good buy at \$34,900.



Magnificent views of Birmingham Country Club fairways will be yours from this handsome home. The kids can walk to the club (so can Dad) as well as to shopping and grade school. In top condition and of superb construction, the home has four good sized bedrooms, large living room with bay, family room and screened porch. The full basement is paneled. A really fine home at \$42,500.



Talk about luxury! This brick rambler is completely summer cooled and winter heat controlled. The decorating motif is exquisite and complete with high quality carpeting and draperies. The cleverly designed games room has a built in bar, the expertly landscaped site has a sprinkler system. There are three lovely bedrooms, and a sparkling kitchen with all built ins. Top Beverly location on a quiet drive. Birmingham schools, all for \$32,900.



245 S. Woodward

MI 6-1234