

HOPPING PLAZA

TELEGRAPH at WEST MAPLE

Colombo's Barber Shop

Johnbee Decorative Home Accessories

Juliard's

Jacqueline Shop

Argyle Shop

Chase Cleaners

Pam's of Bloomfield

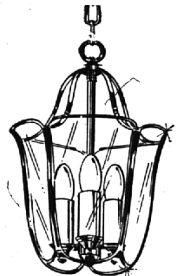
Thunderbird Shop

American Savings

ob lists



For the Finest in
QUALITY LIGHTING FIXTURES
Visit
**MICHIGAN
CHANDELIER**



Michigan's Largest Collection of
Lighting Fixtures!

MA 6-2548 Telegraph at Maple Rds.
Open Thursday & Friday Evenings Until 9 p.m.

FINAL CLEARANCE
of all
SEASONABLE MERCHANDISE!

Up to
50% OFF

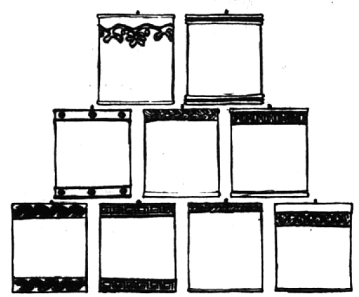
- Snow Suits
- Jackets
- Skirts
- Sweaters
- Dresses
- Pajamas
- Sleepers

Big selection in sub-teen department!

Pam's of Bloomfield

In Bloomfield Plaza Security Charge MA 6-5925
Telegraph at Maple MA 6-5925
Open Friday Evenings 'til 9 p.m.

LAMP SHADES
Completely hand sewn silk shades



Please bring your lamp base to be properly fitted.

johnbee. DECORATIVE HOME ACCESSORIES
Telegraph at Maple

Open Thursday & Friday evenings until 9 p.m.

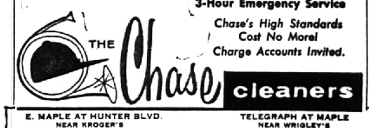
MID-WINTER SPECIALS

COUPON \$1.00
This coupon worth \$1.00 on 3 men's or ladies' outer coats (or combination of either), or 30c on 1 outer coat.
Coupon expires Feb. 8th, and is valid only if presented when order is brought in.

COUPON \$1.00
This coupon worth \$1.00 on 3 men's or ladies' suits, or on 3 dresses (or combination of either), or 30c on 1 dress or suit.
Coupon expires Feb. 8th, and is valid only if presented when order is brought in.

Insist on that
PROFESSIONAL TOUCH!

- Careful Spotting
- Meticulously Cleaned Garments
- Professional Finishing
- Replacing Buttons



E. MAPLE AT HUNTER BLVD. NEAR KROGER'S
TELEGRAPH AT MAPLE NEAR WHIGLEY'S



Build the security you would have for your family tomorrow by saving today at American Savings and Loan Association.

At American Savings, your money will earn the highest rate on insured savings in Michigan—4%, compounded and paid quarterly. And every dollar in your account, up to \$10,000, will be insured safe by an agency of the United States Government.

Whatever the good things in life you would have, the surest way to build for your future is by saving today... the American way.

AMERICAN SAVINGS
MICHIGAN'S LARGEST STATE CHARTERED SAVINGS AND LOAN INSTITUTION
MAIN OFFICE: WOODWARD AT CORNHILL

SAVE FOR THAT SUNNY DAY... THE AMERICAN WAY

Charge accounts are cordially invited. Unlimited free parking. Open until 9:00 p.m. every evening.

sale



our entire remaining collection of fall and winter sportswear and casuals!

AT 1/2 OFF!

- Après-ski group: Stunning stretch slacks, silks, velvets. Costume blouses, festive sweaters.
Slacks: were 8.98 to 17.98 now 4.50 to 9.00
Proportioned and non proportioned; wools, corduroys, knits.
- Sports sweaters: were 8.98 to 24.98 now 4.50 to 8.50
Pullovers, cardigans, wools, shetlands, fur blends.
- Dresses: were 29.98 to 65.00 now 15.00 to 27.50
A-lines, sheaths, shirtwaists, jumpers.
- Skirts: were 9.98 to 19.98 now 5.00 to 10.00
A-line, pleated, wrap-around, slim, Plaids, tweeds, solids.
- Suits: were 25.00 to 85.00 now 12.50 to 42.50
Handsome knits and wools, imported and domestic, 2 and 3 pc.
- Coordinates: were 7.98 to 27.98 now 4.00 to 14.00
Interesting go-togethers from well-known makers.



Every day, bright new things are arriving; refreshing, gay, pretty casuals for our resort and spring collection. Fun just to look!

YEAR 'ROUND SHOPS: BLOOMFIELD PLAZA, MAPLE AT TELEGRAPH, BLOOMFIELD NEAR KROGER'S • 32700 WOODWARD, FERRISDALE
SEASONAL SHOPS: BOYNE HIGHLANDS, HARBOR SPRINGS, MICHIGAN NEAR WHIGLEY'S • 2034 FORT STREET, LINCOLN PARK